

50,249 SF INDUSTRIAL SPACE FOR LEASE

CBRE

5101
COOSAW CREEK BLVD
N. CHARLESTON, SC 29420



- NEW OWNERSHIP
- RENOVATIONS UNDERWAY

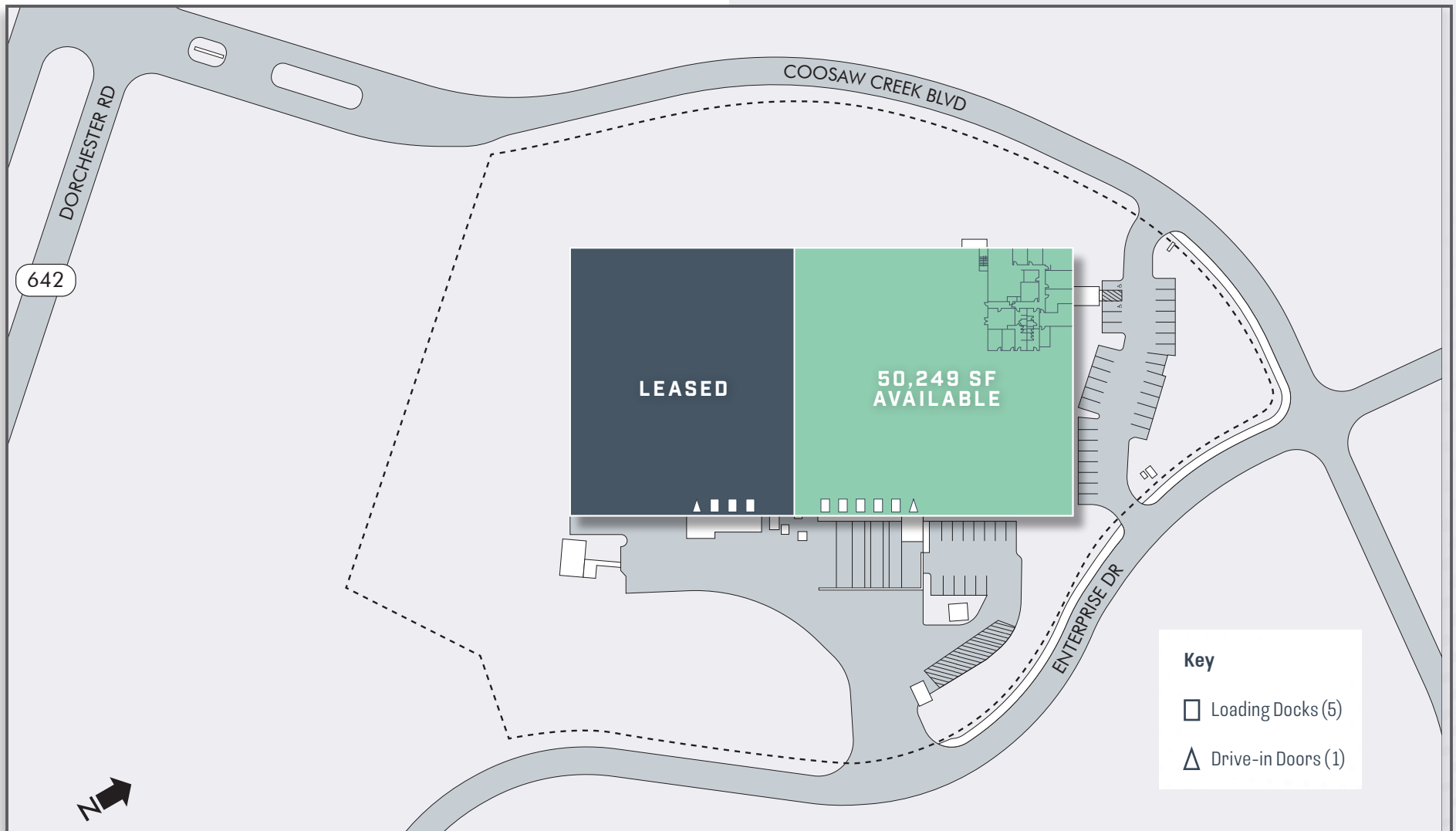
- FIVE DOCK HIGH DOORS
- 24' CLEAR HEIGHT



PROPERTY OVERVIEW

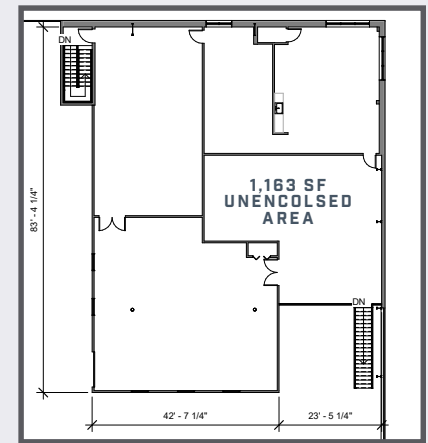
SPACE AVAILABLE	50,249 SF
PRIMARY OFFICE	5,284 SF
OPTIONAL 2ND FLOOR OFFICE	4,023 SF
LAND SIZE	6.78 Acres
ZONING	M-1 Light Industrial
CLEAR HEIGHT	24'
LOADING DOCKS	Five (5): 9' x 10'
DRIVE-IN DOORS	One (1): 10' x 20'
PARKING	48 Spaces
COLUMN SPACING	25' x 90' and 25' x 65'
LIGHTING	LED
SPRINKLER	Wet

SITE PLAN



FLOOR PLAN

OPTIONAL 2ND
FLOOR OFFICE
4,023 SF



LEASED

50,249 SF
WAREHOUSE

OFFICE

5 Loading Docks

1 Drive-in

20'W x 10'H
door

10'W x 10'H
door

9'W x 10'H
door

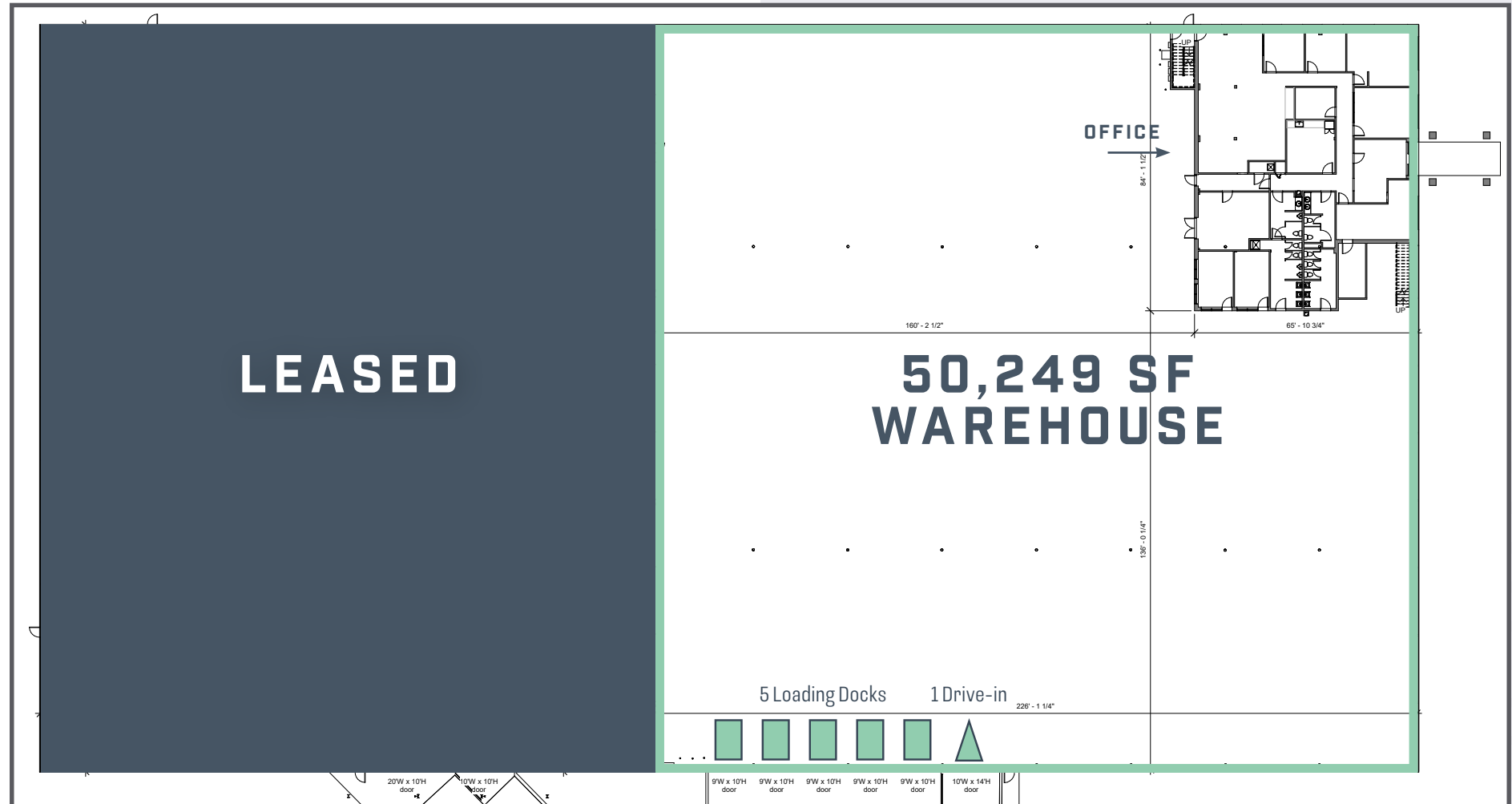
9'W x 10'H
door

9'W x 10'H
door

9'W x 10'H
door

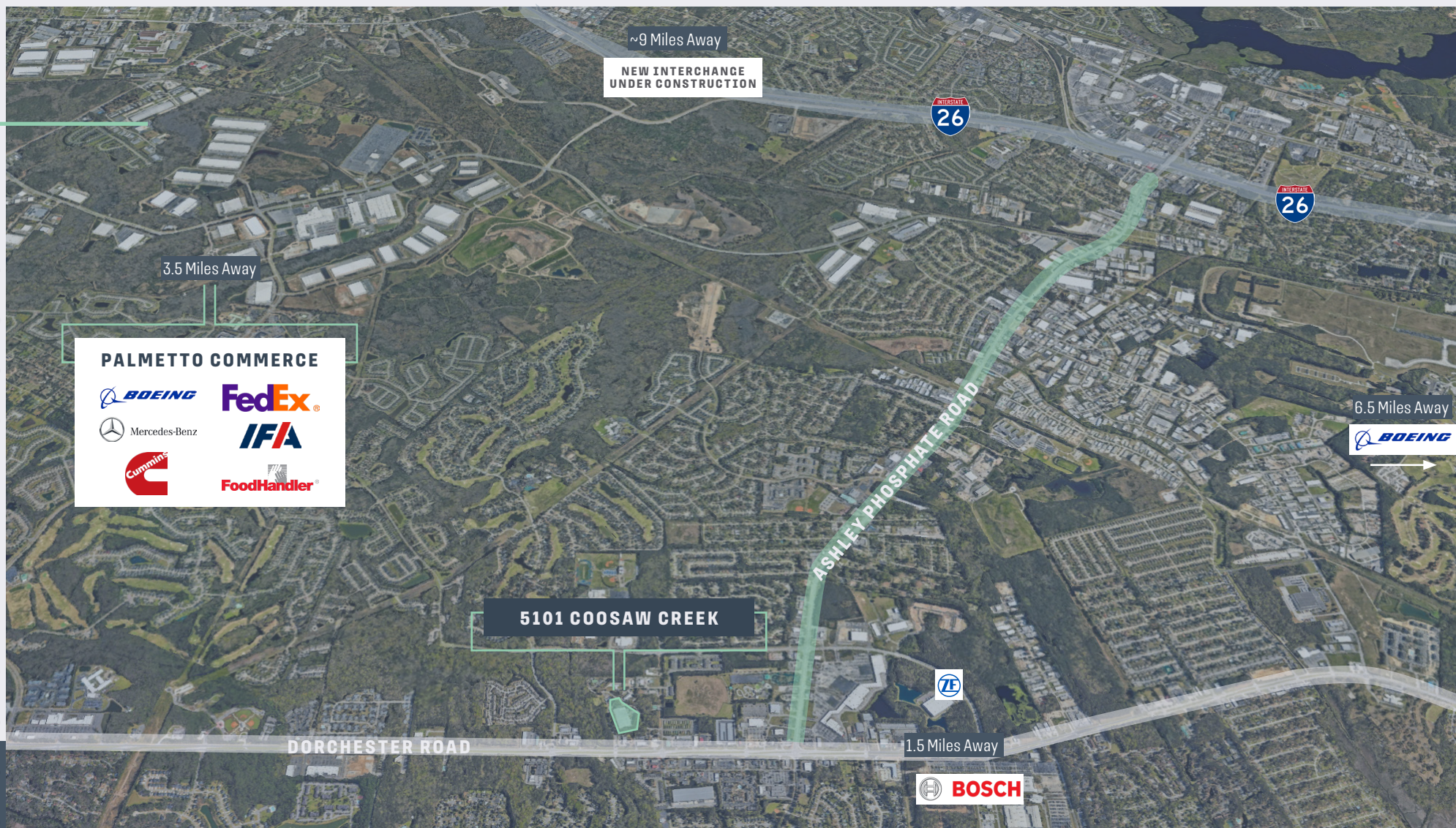
9'W x 10'H
door

10'W x 14'H
door



BUILDING PHOTOS





CONTACT US:

BRENDAN REDEYOFF, SIOR

Senior Vice President

+1 843 793 8839

brendan.redeyoff@cbre.com

TIM RABER, SIOR

Vice President

+1 843 972 3220

tim.raber@cbre.com

BOB BARRINEAU

Senior Vice President

+1 843 270 7851

robert.barrineau@cbre.com

CBRE

© 2025 CBRE, Inc. All rights reserved. This information has been obtained from sources believed reliable but has not been verified for accuracy or completeness. CBRE, Inc. makes no guarantee, representation or warranty and accepts no responsibility or liability as to the accuracy, completeness, or reliability of the information contained herein. You should conduct a careful, independent investigation of the property and verify all information. Any reliance on this information is solely at your own risk. CBRE and the CBRE logo are service marks of CBRE, Inc. All other marks displayed on this document are the property of their respective owners, and the use of such marks does not imply any affiliation with or endorsement of CBRE. Photos herein are the property of their respective owners. Use of these images without the express written consent of the owner is prohibited.