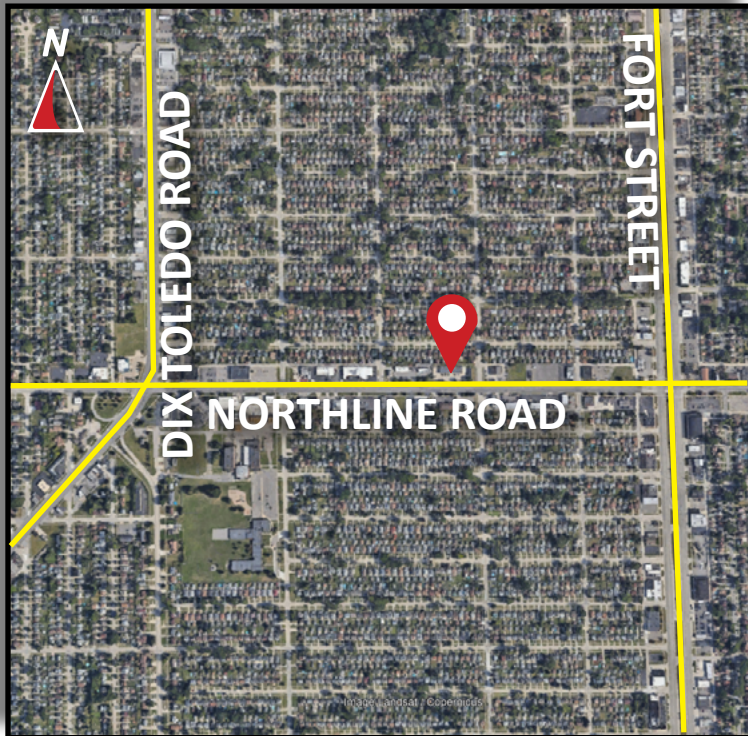


# Burger

& COMPANY

## FOR LEASE

13256 Northline Road  
Southgate, Michigan  
1,000 Square Feet



- 1,000 Square Foot Clean Unit
- Immediate Occupancy
- Northline Road Frontage
- Many Possible Uses
- Located Between Dix Toledo and Fort Street
- Gross Lease Rate Included the Real Estate Taxes, Building Insurance, Lawn Care and Snow Removal
- Over 45,000 Households in a 3 Mile Radius
- Traffic Count: 24,103 Cars Per Day
- \$1,300/Per Month

**Burger & Company**

248.536.2888

[www.burgercollc.com](http://www.burgercollc.com)

38345 W. 10 Mile Road, Suite 100  
Farmington Hills, MI 48335

**Michael Rose**

Senior Associate

Cell: 248.396.6982

[michael.rose@burgercollc.com](mailto:michael.rose@burgercollc.com)

**Nicolo Burger, SIOR, CCIM**

Vice President

Cell: 810.224.8103

[nic@burgercollc.com](mailto:nic@burgercollc.com)

Information contained herein is deemed to be reliable but is not guaranteed and may be withdrawn at any time.



# FOR LEASE

13256 Northline Road  
Southgate, MI



**Burger**

& COMPANY

## Michael Rose

Senior Associate

Cell: 248.396.6982

michael.rose@burgercollc.com

## Nicolo Burger, SIOR, CCIM

Vice President

Cell: 810.224.8103

nic@burgercollc.com

248.536.2888

[www.burgercollc.com](http://www.burgercollc.com)

38345 W. 10 Mile Road, Suite 100  
Farmington Hills, MI 48335

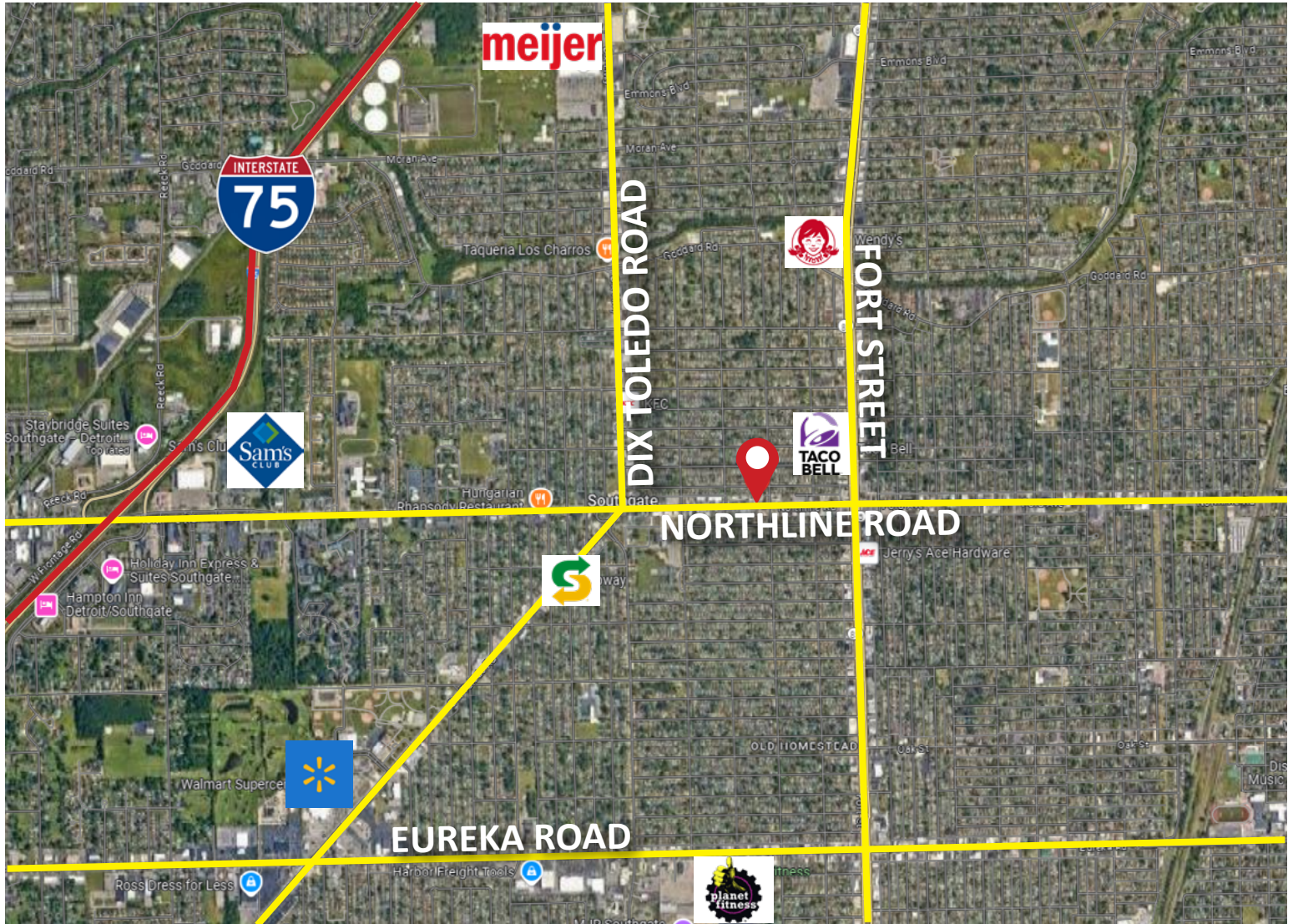
Information contained herein is deemed to be reliable but is not guaranteed and may be withdrawn at any time.



# FOR LEASE

13256 Northline Road  
Southgate, MI

---



**Michael Rose**  
Senior Associate  
Cell: 248.396.6982  
michael.rose@burgercollc.com

**Nicolo Burger, SIOR, CCIM**  
Vice President  
Cell: 810.224.8103  
nic@burgercollc.com

248.536.2888  
www.burgercollc.com  
38345 W. 10 Mile Road, Suite 100  
Farmington Hills, MI 48335

Information contained herein is deemed to be reliable but is not guaranteed and may be withdrawn at any time.