



Confidential, please be discreet. Tenant operating business, employees/customers unaware.

CONTACT EXCLUSIVE AGENTS

MICHAEL HORNE

mhorne@ripconj.com
201.351.8782

STEVEN WINTERS

swinters@ripconj.com
201.335.6050

RIPCO
REAL ESTATE

611 River Drive
3rd Floor
Elmwood Park, NJ 07407
201.777.2300

Please visit us at [ripconj.com](https://www.ripconj.com) for more information

This information has been secured from sources we believe to be reliable, but we make no representations as to the accuracy of the information. References to square footage are approximate. Buyer must verify the information and bears all risk for any inaccuracies.

RETAIL SPACE

FLEMINGTON, NJ

REDEVELOPMENT SITE

29 NJ-12

SIZE

±1,680 SF

TAXES

\$20,207.22 (2024)

ASKING RENT

Upon Request

ZONING: HR HIGHWAY RETAIL DISTRICT

Permitted Uses:

Hardware Store, General Merchandise Store, Grocery and Convenience Stores, Meat and Fish Markets, Farmer's Market, Retail Bakery, Apparel Store, Furniture Store, Restaurants, Drug and Proprietary Stores, Liquor Stores, Opticians and Optical Goods, Offices for Finance, Insurance and Real Estate Services, Dry Cleaners and Coin Operated Laundry Services, Beauty and Barber Shops, Legal Services, Medical and Dental Offices, Physical Fitness Centers, General Contractors, Drive-Thru and Drive-In Facilities Allowed

Conditional Uses:

Service Stations, Hotels and Motels, Automotive Body Repair

LOT SIZE

0.69 Acres

TERM

Negotiable

COMMENTS

Key location on the Flemington Circle

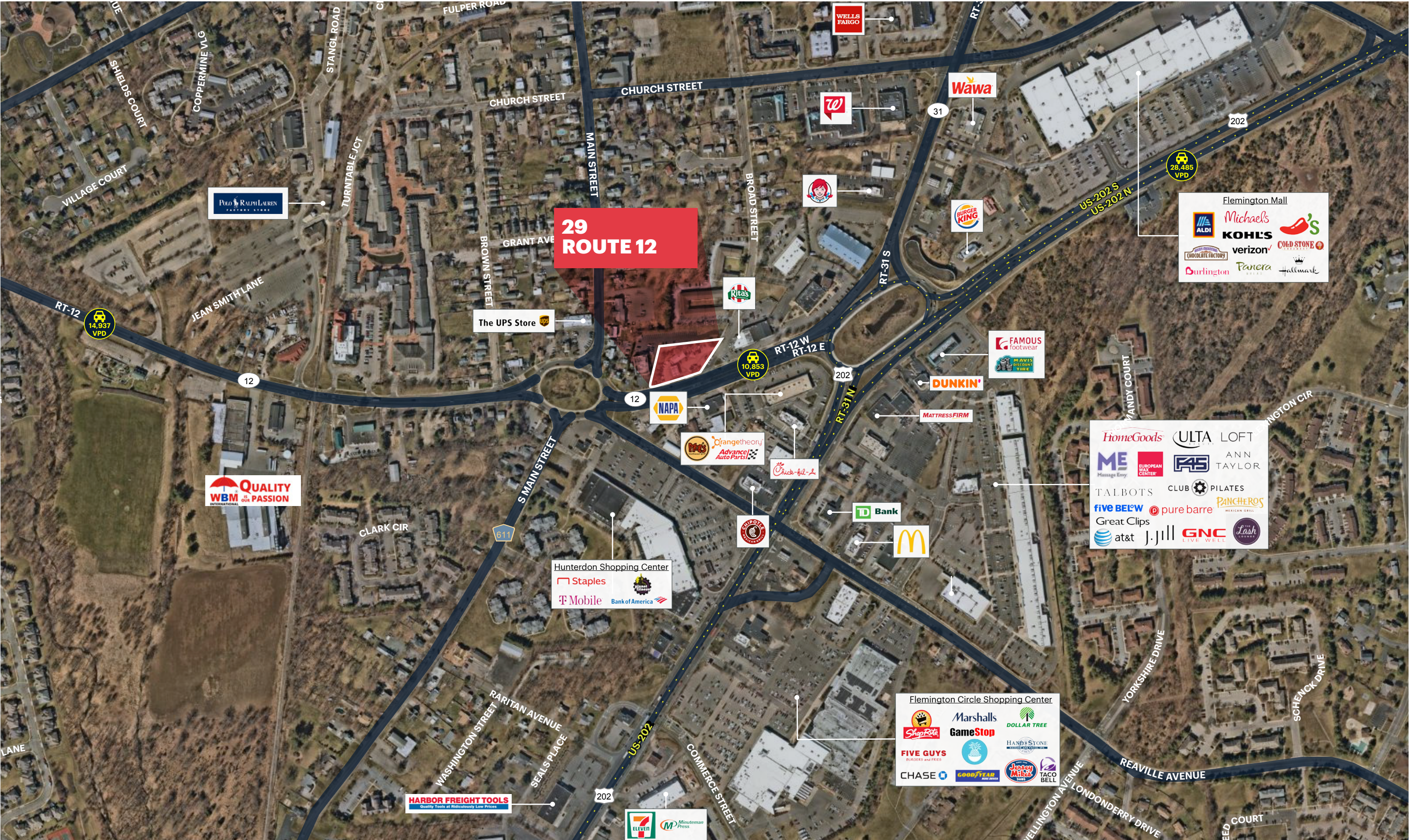
In the heart of the retail market

Excellent visibility and access

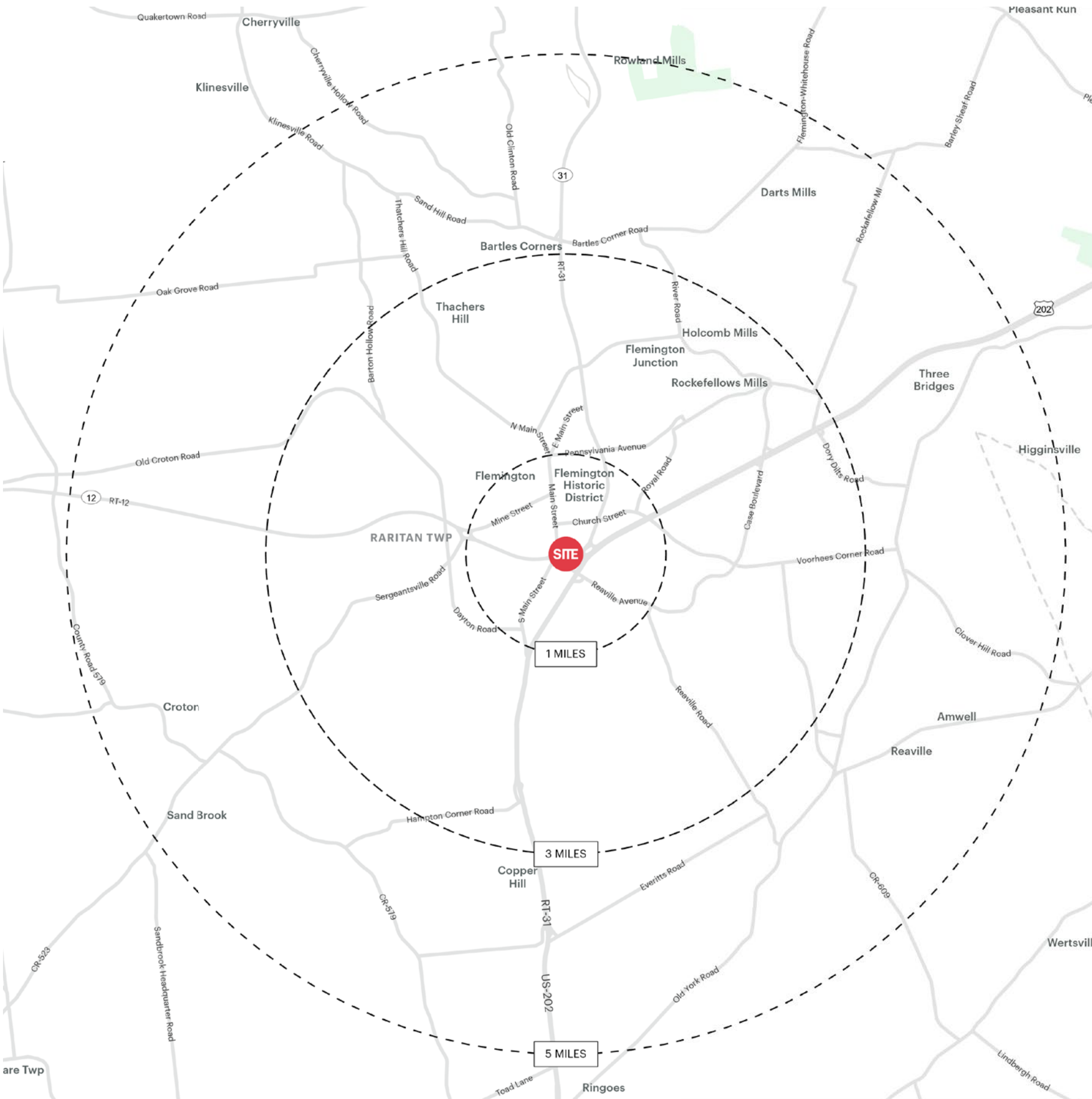
OBLIQUE AERIAL



LOW-LEVEL AERIAL



DEMOGRAPHICS



1 MILE RADIUS

POPULATION

8,358

HOUSEHOLDS

3,609

MEDIAN AGE

42.7

COLLEGE GRADUATES (Bachelor's +)

3,491 - 57.3%

3 MILE RADIUS

POPULATION

25,222

HOUSEHOLDS

9,628

MEDIAN AGE

42.8

COLLEGE GRADUATES (Bachelor's +)

11,104 - 62%

5 MILE RADIUS

POPULATION

37,948

HOUSEHOLDS

14,317

MEDIAN AGE

44.3

COLLEGE GRADUATES (Bachelor's +)

16,814 - 61.6%

TOTAL BUSINESSES

881

TOTAL EMPLOYEES

6,936

AVERAGE HOUSEHOLD INCOME

\$137,041

TOTAL BUSINESSES

1,626

TOTAL EMPLOYEES

18,085

AVERAGE HOUSEHOLD INCOME

\$183,468

TOTAL BUSINESSES

1,942

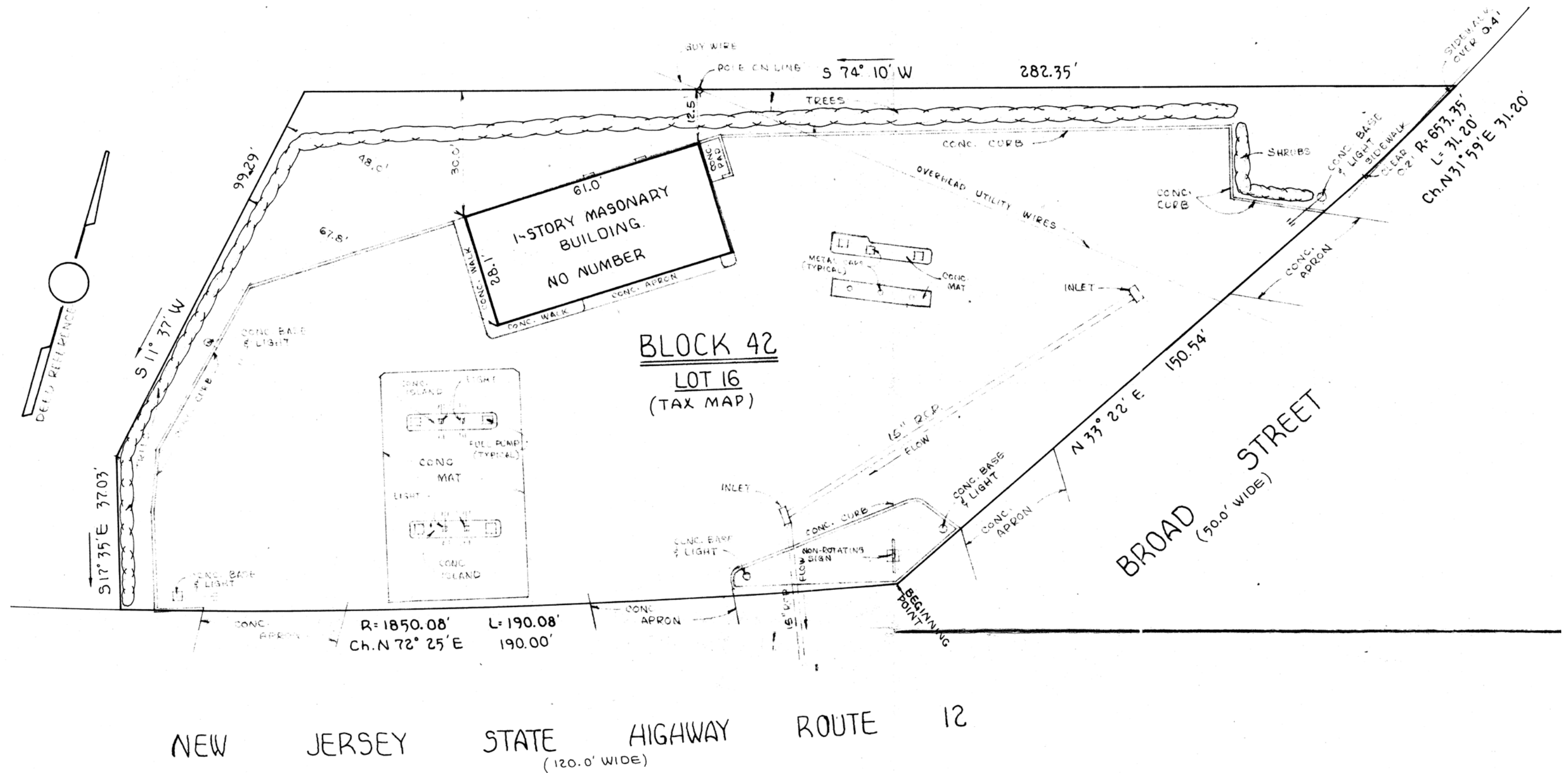
TOTAL EMPLOYEES

20,662

AVERAGE HOUSEHOLD INCOME

\$195,682

*2024 estimates



SURVEY OVERLAY

