

PROPERTY DETAILS

- Unit 3698-H
- 3,370 SF (20% office)
- Rental Rate: \$19.00 NNN + \$7.52 CAM
- 18' clear ceiling height
- 1 dock high door
- 1 grade level door
- Zoning: IL - Light Industrial (City of Lauderhill)
- Parking Ratio: 1.84/1,000 SF
- Strategically located just east of US-441 between the Fla. Tnpk. and I-95 providing easy access to all of south Florida

ABOUT PROPERTY



PRICE

\$19.00 NNN



YEAR BUILT

1985



AVAILABLE SF

3,370



PARKING

1.84/1,000



LOCATION

City of Lauderhill

For more information:

Jonathan Thiel

954.652.2020 | Jthiel@Bergercommercial.Com

bergercommercial.com

Daniel Forman

954.652.2004 | Dforman@Bergercommercial.Com

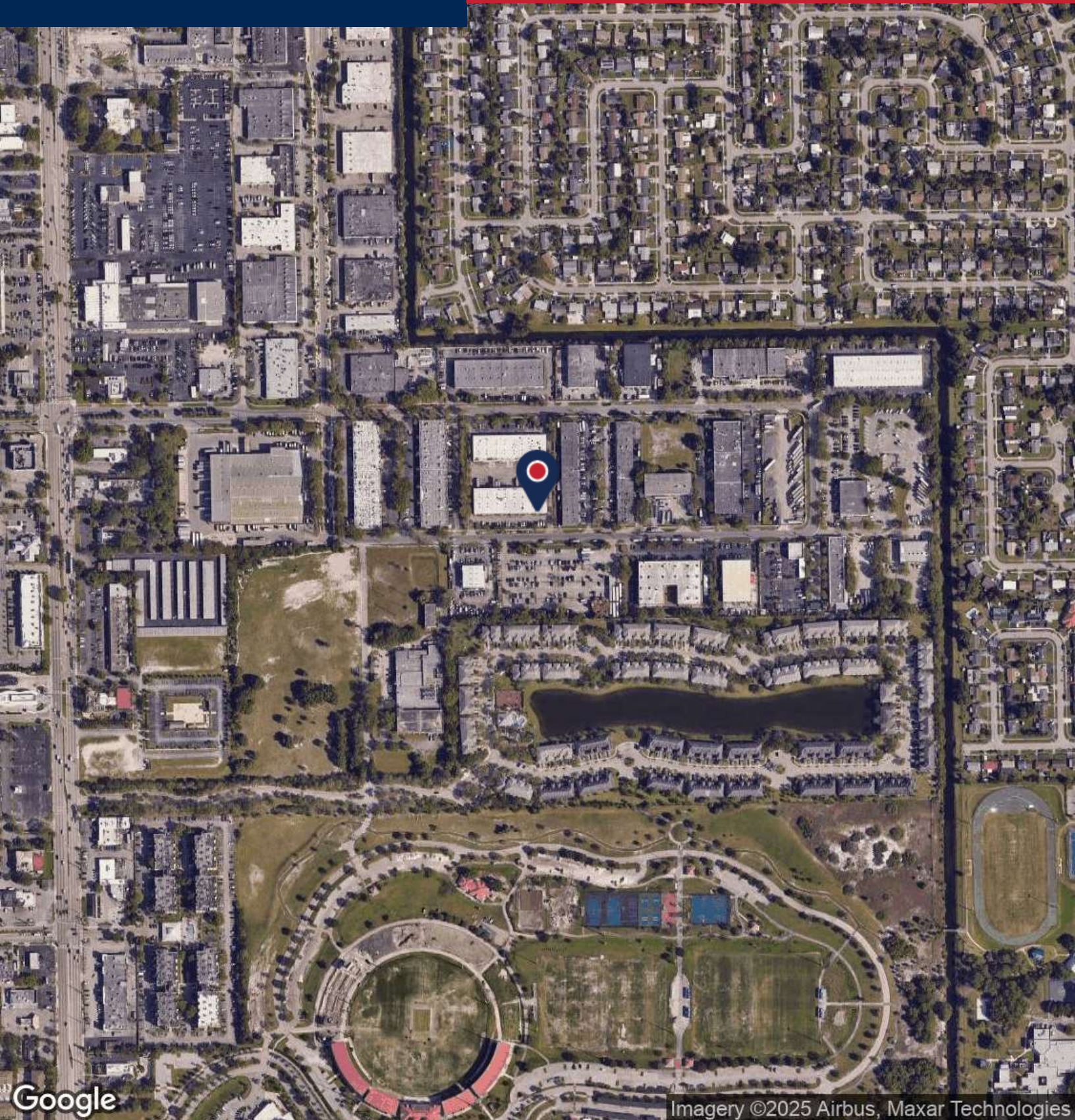
Lawrence Oxenberg

954.652.2017 | Loxenberg@Bergercommercial.Com



LAUDERHILL COMMERCE PARK

LOCATION MAP



For more information:

Jonathan Thiel

954.652.2020 | Jthiel@Bergercommercial.Com
bergercommercial.com

Daniel Forman

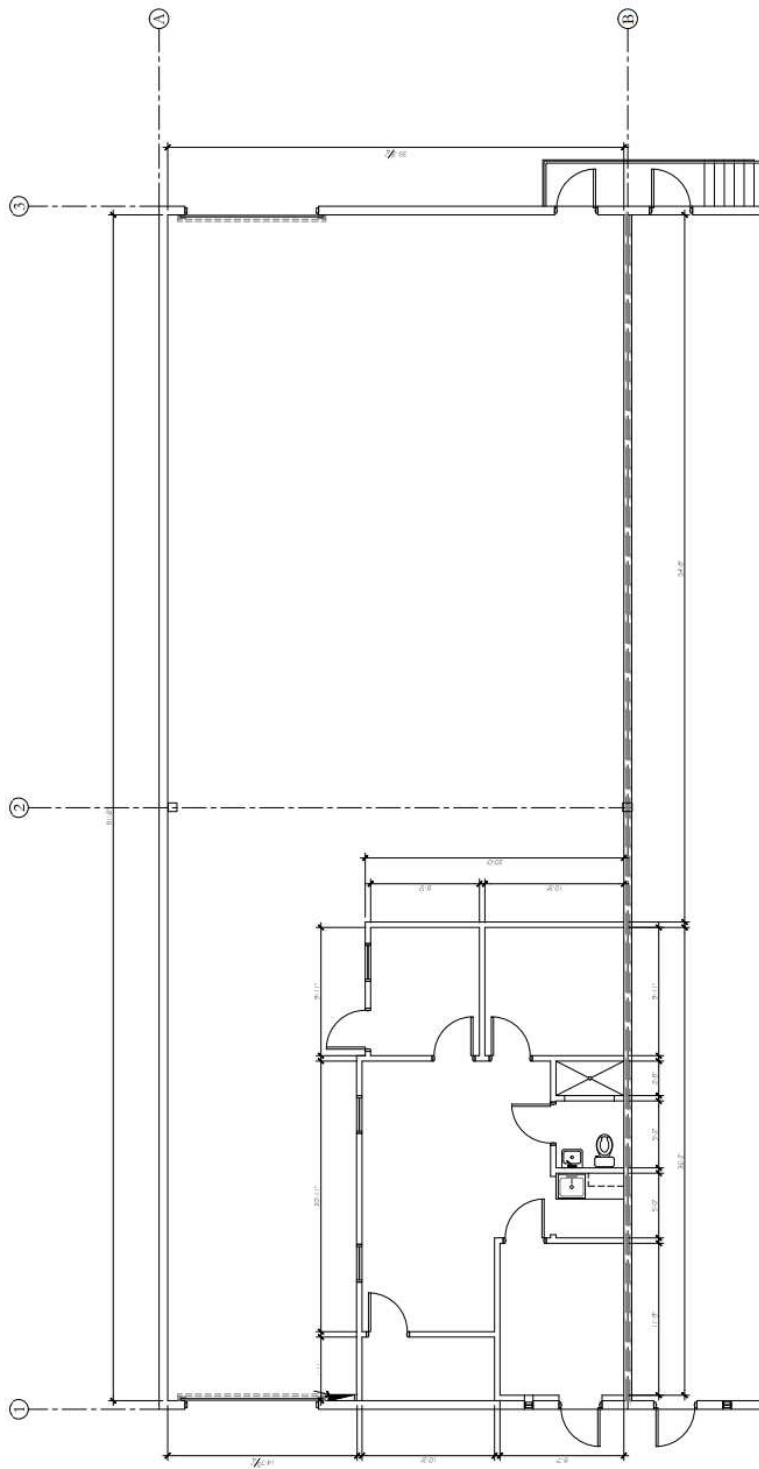
954.652.2004 | Dforman@Bergercommercial.Com

Lawrence Oxenberg

954.652.2017 | Loxenberg@Bergercommercial.Com



Information furnished regarding this property is from sources deemed reliable, but no warranty or representation as to the accuracy thereof and it is submitted subject to errors, omissions, prior sale, lease or withdrawal without prior notice.



Information furnished regarding this property is from sources deemed reliable, but no warranty or representation as to the accuracy thereof and it is submitted subject to errors, omissions, prior sale, lease or withdrawal without prior notice.