



FOR SALE OR LEASE

Freestanding Medical Office

1452 N Higley Rd,
Gilbert, AZ 85234

MENLO GROUP
P: 480.659.1777 • F: 480.535.5854
1809 S Holbrook Ln, Tempe, AZ 85281
menlocre.com

STEVE BERGHOFF, SIOR, CCIM
480.659.1777
steve@menlocre.com



Menlo Group
COMMERCIAL REAL ESTATE

Gilbert Medical Office For Sale & Lease

1452 N Higley Rd, Gilbert, AZ 85234

Executive Summary

Page 2



OFFERING SUMMARY

Sale Price: \$2,475,000.00

Lease Rate: \$23.00 PSF NNN

Building Size: Approximately 8,000 SF

Lot Size: Approximately .76 Acres

Zoning: SC - City of Gilbert

PROPERTY OVERVIEW

This property is located just south of the SWC of Higley Rd and Baseline Rd in the heart of Gilbert, Arizona. The property is a freestanding 8,000 SF Medical Office that includes a reception and waiting area, exam and treatment rooms, private offices, private restrooms, and a staff break room. The site sits on a large .76 acre lot with plentiful parking (including covered parking) and monument signage along Higley Rd which sees an average traffic count of over 30,000 vehicles per day. The property is located in the highly desirable Southeast Valley with high demographics and rising population numbers. The property has easy access to the US60 and is near Banner Gateway Medical Center and Arizona School of Dentistry and Oral Health, and is in close proximity to retail and business amenities, including Superstition Springs Center and Dana Park.

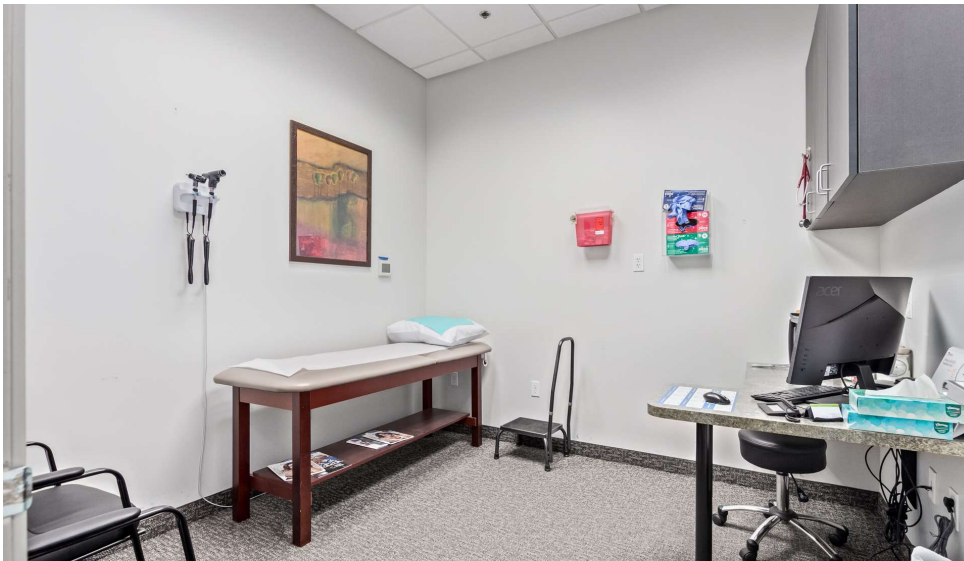
PROPERTY HIGHLIGHTS

- Freestanding Medical Office
- Available For Sale or Lease
- Built in 2006
- Monument Signage along Higley Rd
- Easy Access to US 60
- Near Banner Gateway Medical
- APN 313-11-598 & 313-11-958

Gilbert Medical Office For Sale & Lease

1452 N Higley Rd, Gilbert, AZ 85234

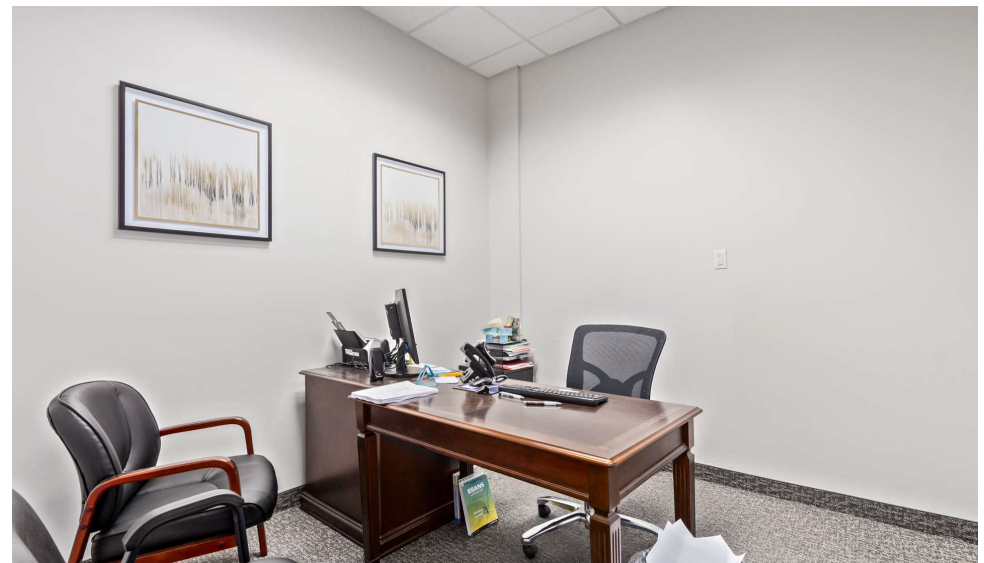
Property Photos



Gilbert Medical Office For Sale & Lease

1452 N Higley Rd, Gilbert, AZ 85234

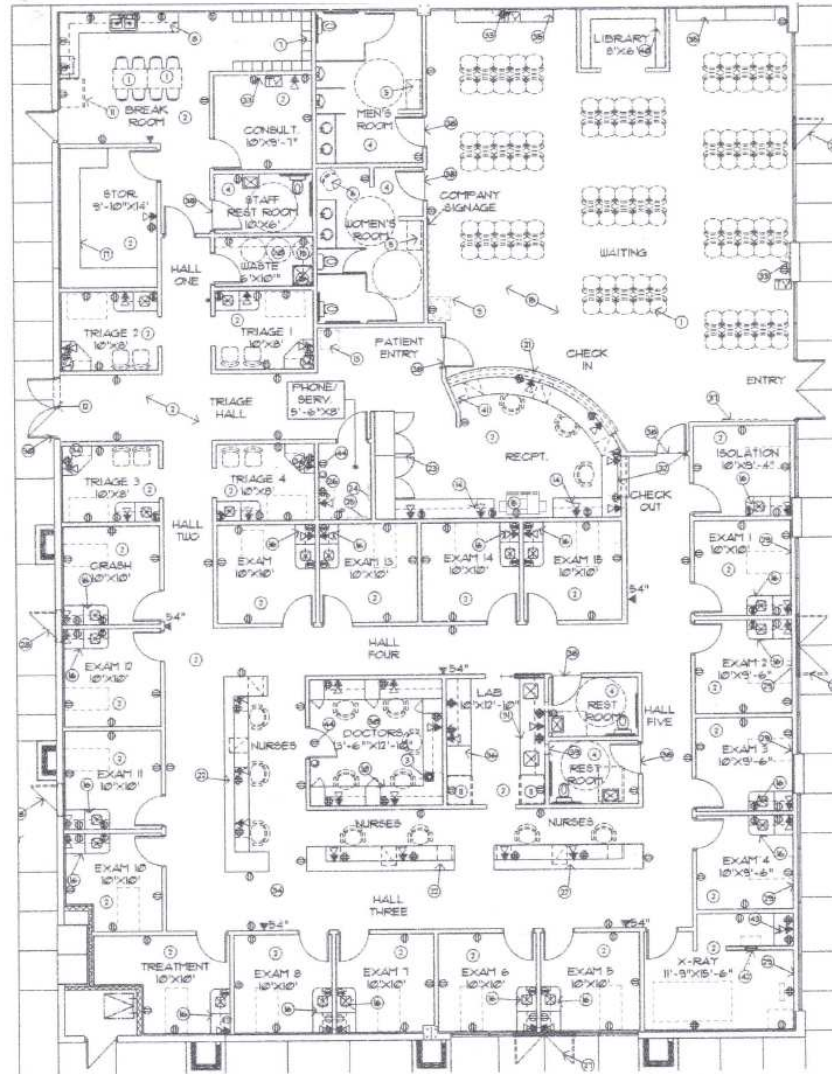
Property Photos



Gilbert Medical Office For Sale & Lease

1452 N Higley Rd, Gilbert, AZ 85234

Floor Plan



Gilbert Medical Office For Sale & Lease

1452 N Higley Rd, Gilbert, AZ 85234

Aerial Map

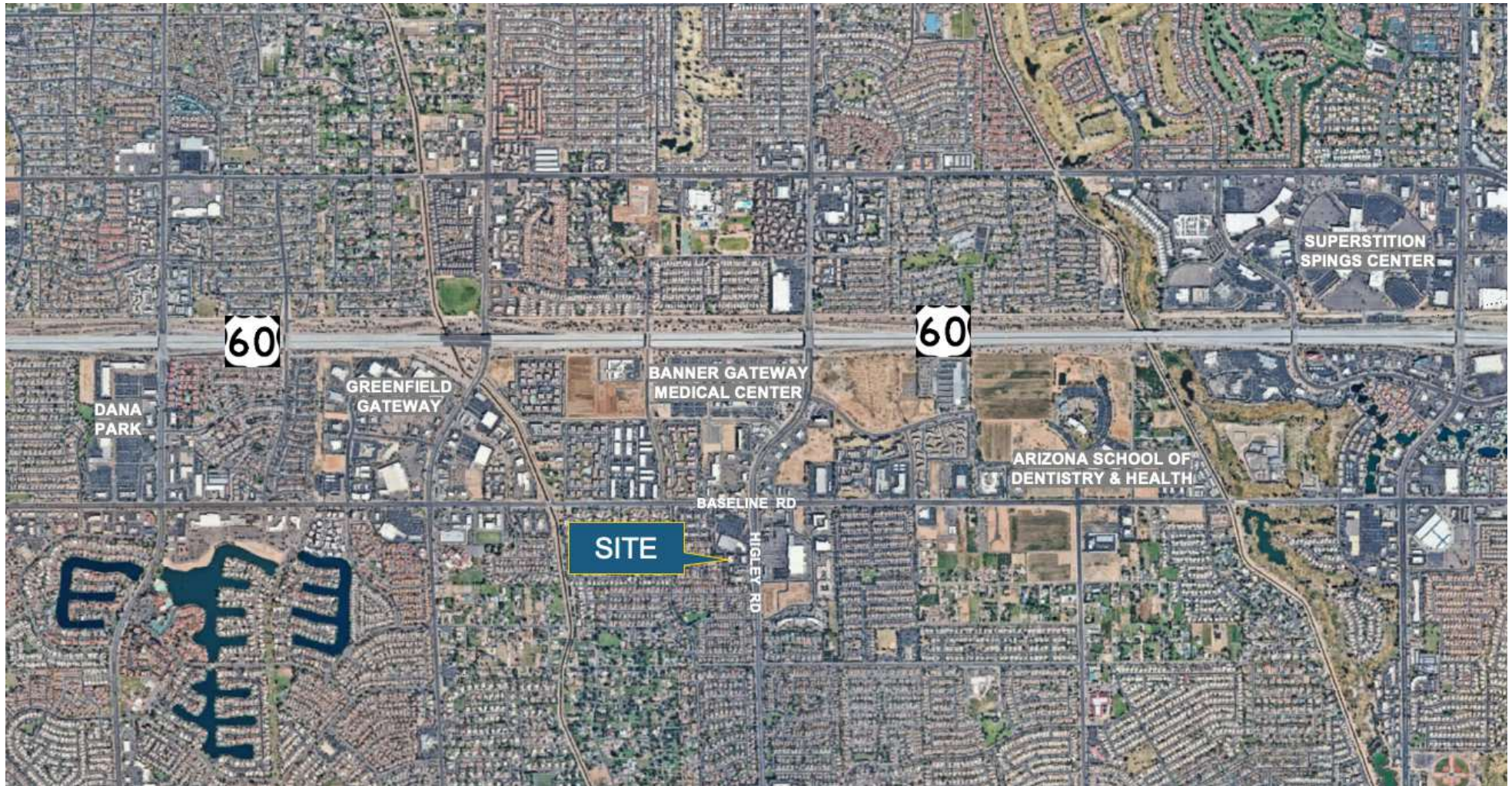


Gilbert Medical Office For Sale & Lease

1452 N Higley Rd, Gilbert, AZ 85234

Aerial Map

Page 7



Gilbert Medical Office For Sale & Lease

1452 N Higley Rd, Gilbert, AZ 85234

Demographics Map & Report

POPULATION

	1 MILE	3 MILES	5 MILES
Total Population	10,584	103,506	297,060
Average Age	29.8	39.3	38.8
Average Age (Male)	30.8	38.8	37.8
Average Age (Female)	29.6	40.0	39.9

HOUSEHOLDS & INCOME

	1 MILE	3 MILES	5 MILES
Total Households	3,577	39,052	114,055
# of Persons per HH	3.0	2.7	2.6
Average HH Income	\$98,416	\$76,012	\$69,163
Average House Value	\$380,956	\$283,111	\$220,982

2020 American Community Survey (ACS)

