

650 CALIFORNIA STREET 21ST FLOOR

SAN FRANCISCO, CA 94108



PLUG & PLAY OFFICE SUBLEASE | VACANT

14,712 RSF

CALE MILLER

Executive Vice President
cale@hughesmarino.com
415.890.5918

DAVID MARINO

Senior Executive Vice President
david@hughesmarino.com
415.431.3211

HUGHESMARINO

SUBLEASE INFORMATION



KEY HIGHLIGHTS

- Class A, Plug & Play Sublease with unique large portal views
- Fully outfitted with custom/state-of-the-art furnishings
- Great natural light throughout the space with views to the north, east, and west
- Incredible views of The Bay, Coit Tower, Alcatraz, and Nob Hill
- Jackson Square adjacent

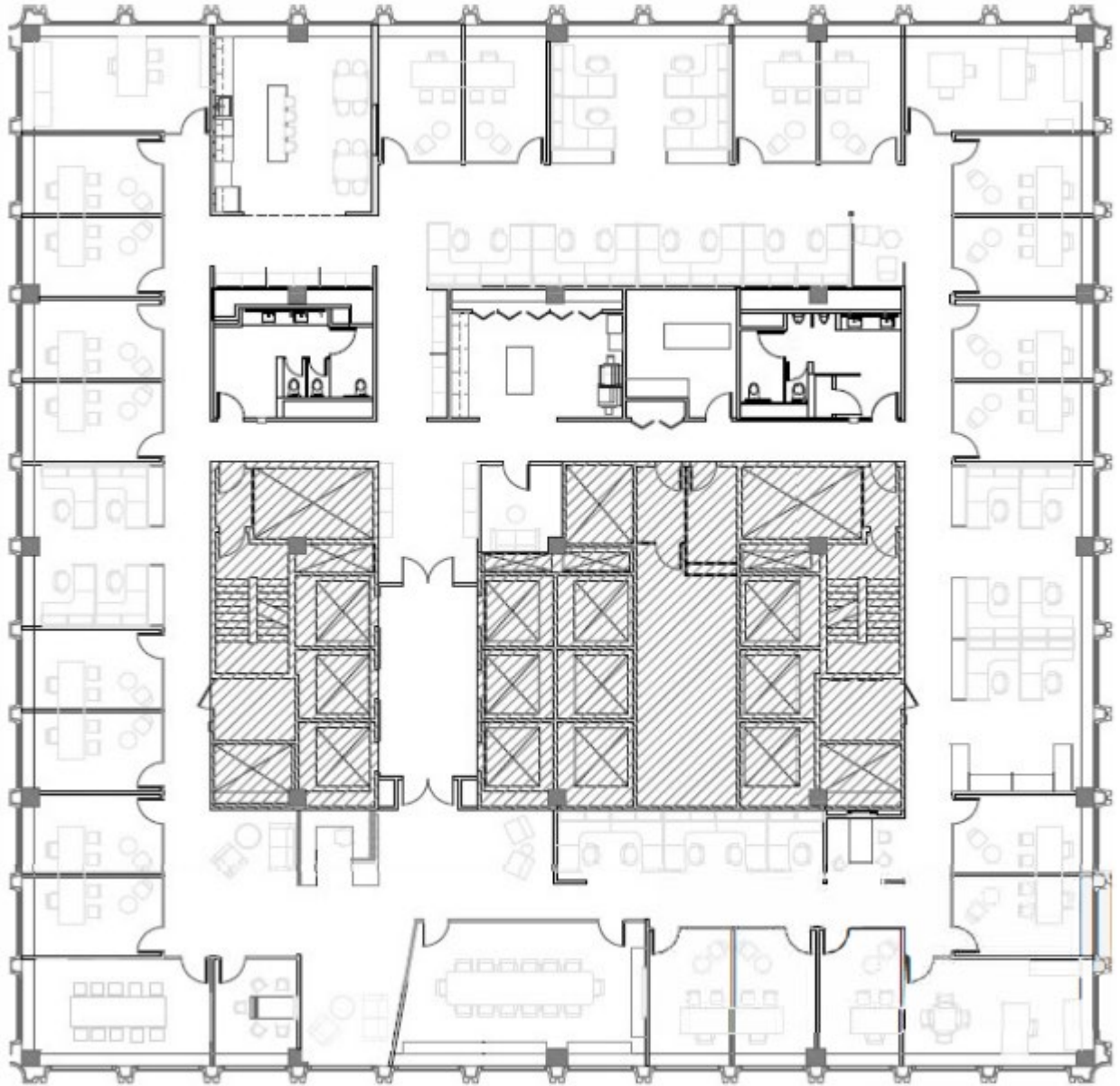
BUILDING INFORMATION



HIGHLIGHTS AND TENANT AMENITIES

- Prestigious California Street address on San Francisco's famed cable-car line
- Immediate proximity to numerous restaurants, hotels, and retail amenities
- Four blocks from Montgomery BART station
- Valet-parked garage, secure bike parking, state-of-the-art fitness center, shower/locker rooms
- Tenant amenities include building common conference room, lobby Café, and tenant lounge
- LEED Gold Certified, Energy Star rated building
- On-site building management

FLOOR PLAN



SPACE HIGHLIGHTS

- 24 Private Offices
- 1 Huddle Room
- 2 Conference Rooms
- 27 Workstations
- Kitchen and Reception Area

650 CALIFORNIA STREET, 21ST FLOOR



650 CALIFORNIA STREET, 21ST FLOOR

