

# RETAIL PROPERTY FOR LEASE

## 1096 - 1102 PLEASANT STREET

*Worcester, Massachusetts*

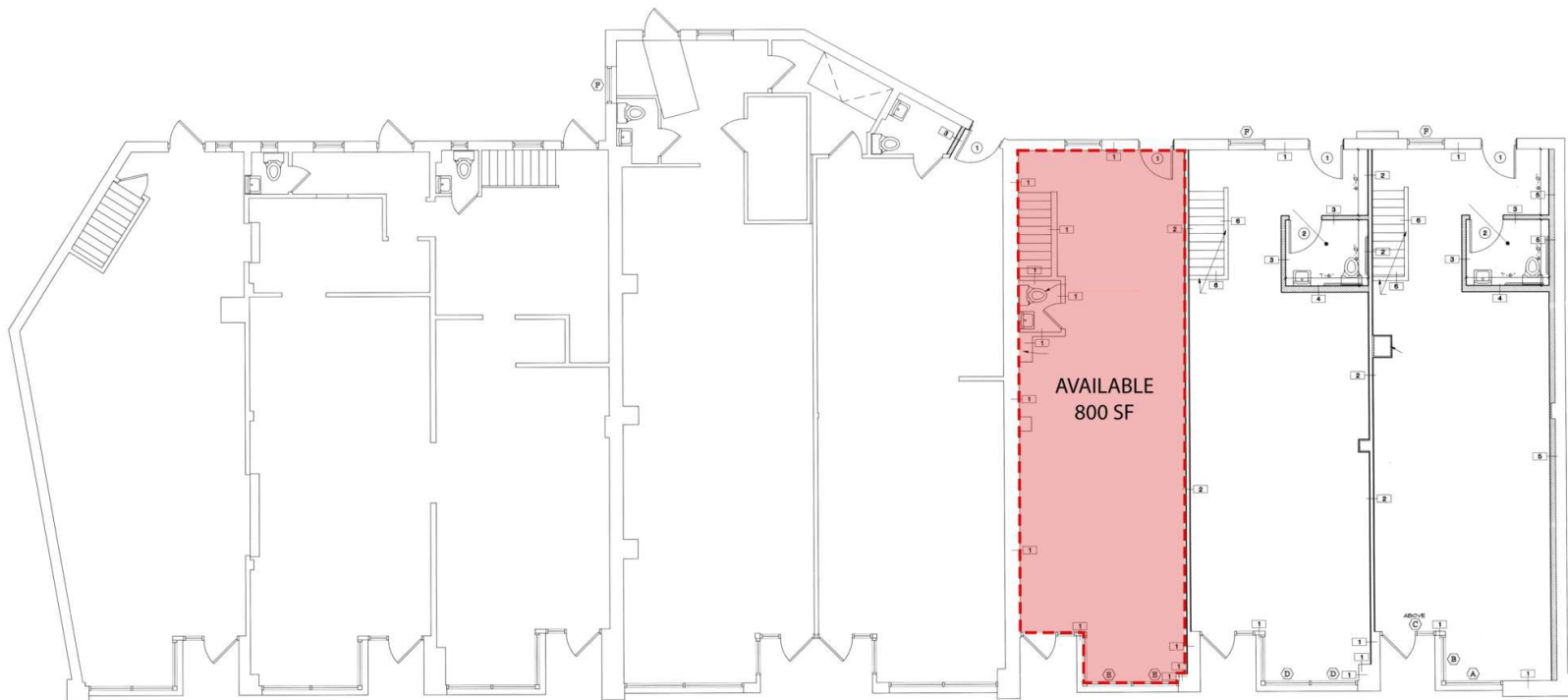


**MARK JOHNS**

508.826.6527

johns@kelleher-sadowsky.com





## PROPERTY DESCRIPTION

Kelleher & Sadowsky is pleased to present the Retail space at 1096-1102 Pleasant Street in Worcester for lease. This is a great opportunity for a variety of businesses to join other tenants in this very well-maintained building. The building has off-street parking and great visibility in the Tatnuck Square neighborhood for your business. Call us for more information today.

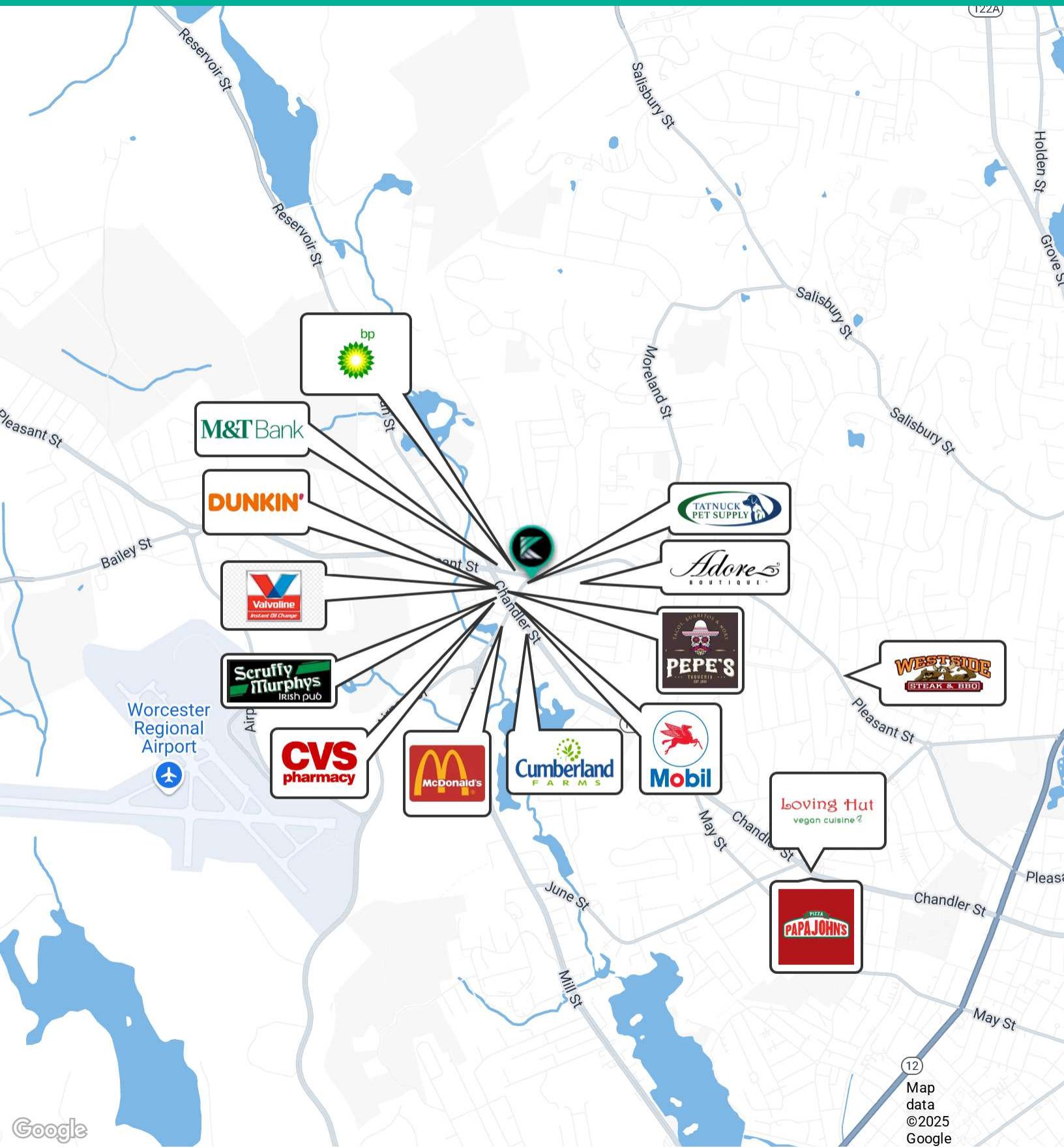
## LOCATION DESCRIPTION

Located in a prime retail and commercial district, this area offers a dynamic mix of shopping, dining, and entertainment options for prospective Retail/Strip Center tenants. Just moments away from iconic attractions such as the Worcester Art Museum, Hanover Theatre for the Performing Arts, and the Worcester Historical Museum, the location provides an exciting blend of culture and commerce. With its lively atmosphere and proximity to well-known landmarks, the area presents an exceptional opportunity for businesses seeking to become part of this thriving and diverse neighborhood.

## OFFERING SUMMARY

Lease Rate:	\$17.00 SF/yr (NNN)
Available SF:	800 SF
Building Size:	7,100 SF
Zoning:	BL-1





Map data ©2025 Google