

Property Description

Highly adaptable commercial property located at 104-106-108 S. John Street in the Town of Newport, Delaware. This well-positioned space offers excellent visibility and accessibility, making it ideal for a wide range of uses including distribution, warehousing, light industrial, or flex space.

Property Details

- Two (2) 1,650 sq/ft units available
- One (1) 2,450 sq/ft unit available
- \$12.00 sq/ft NNN

Property Highlights

- 4 drive in overhead doors
- 1 drive through bay
- Partial built-out office space
- Ample and convenient parking (Street and Lot)
- Direct access to DE-141
- Easy access to I-95, I-295, I-495, DE-1
- 3 bathrooms



104-106-108 S John Street
Wilmington, DE 19805

For Lease





104-106-108 S. John Street
Wilmington, DE 19805

For Lease

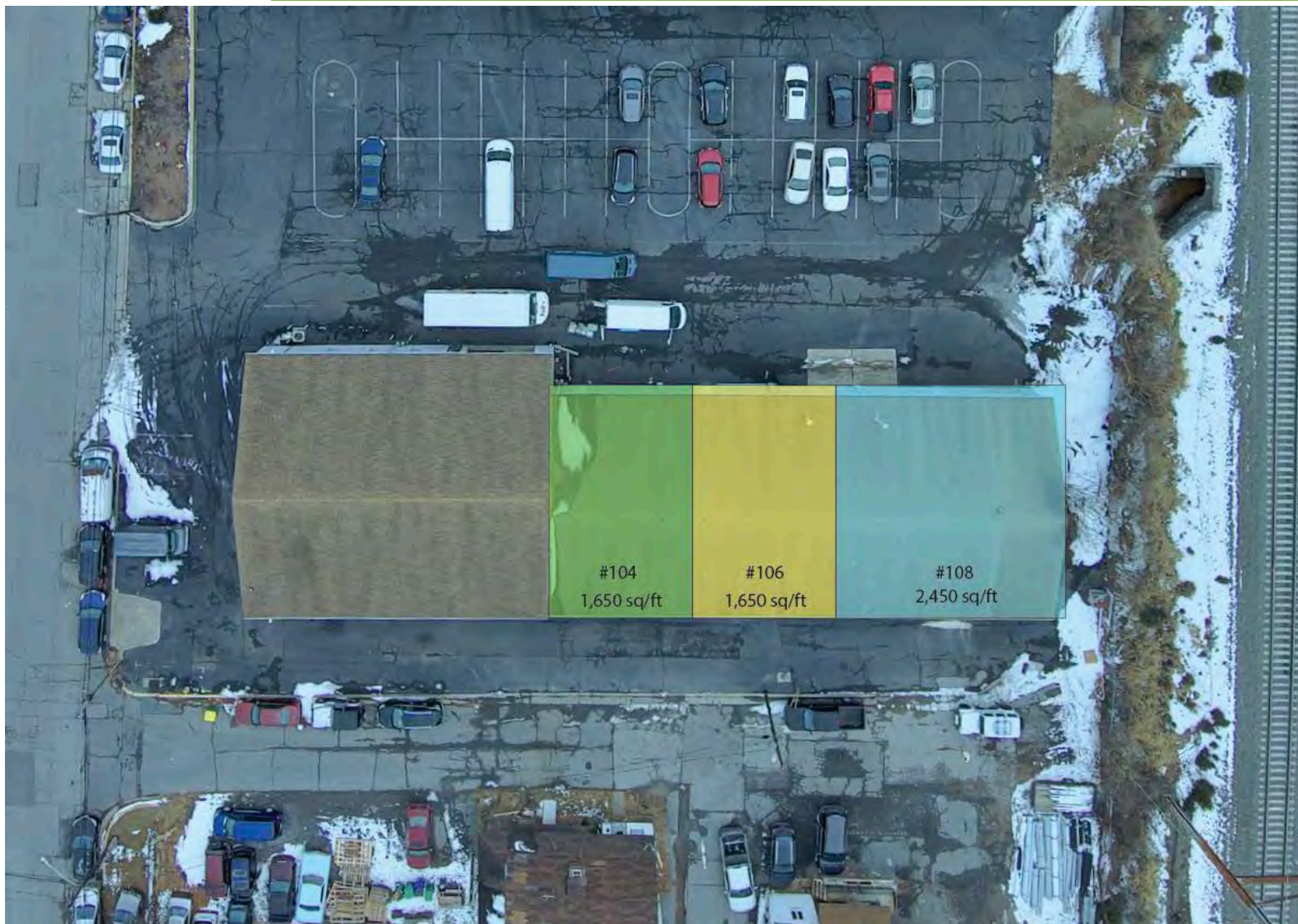


Anthony Medori
tony@medoricommercialrealty.com
(302)-633-0099

Medori Commercial Realty
601 Kirkwood Highway
Wilmington, DE 19805
www.medoricommercialrealty.com

104-106-108 S. John Street
Wilmington, DE 19805

For Lease



104-106-108 S. John Street
Wilmington, DE 19805

For Lease

