



For Sublease

Lease Rate:

**\$16** /SF Full Service

**Contact:**

**Brandon Huntsman**

Executive Vice President  
+1 801 830 9232  
brandon.huntsman@colliers.com

**Josh Martin**

Executive Vice President  
+1 801 830 2004  
josh.martin@colliers.com

**Colliers**

2100 Pleasant Grove Blvd., Suite 200  
Pleasant Grove, UT 84062  
Main: +1 801 947 8300  
colliers.com

## Mountain Vista Office Sublease

3411 Mountain Vista Pkwy  
Provo, Utah

### Property Information

- Main floor office space with a large breakroom, storage room, conference room, hardwall offices along exterior and an open office area on the interior of the space.
- Ample parking
- Located in Opportunity Zone
- Built-in furniture
- 2.62 miles to I-15

**Lease Rate:**      **\$16.00/SF Full Service**

**Total Available:**   **6,497 SF | Main Floor**



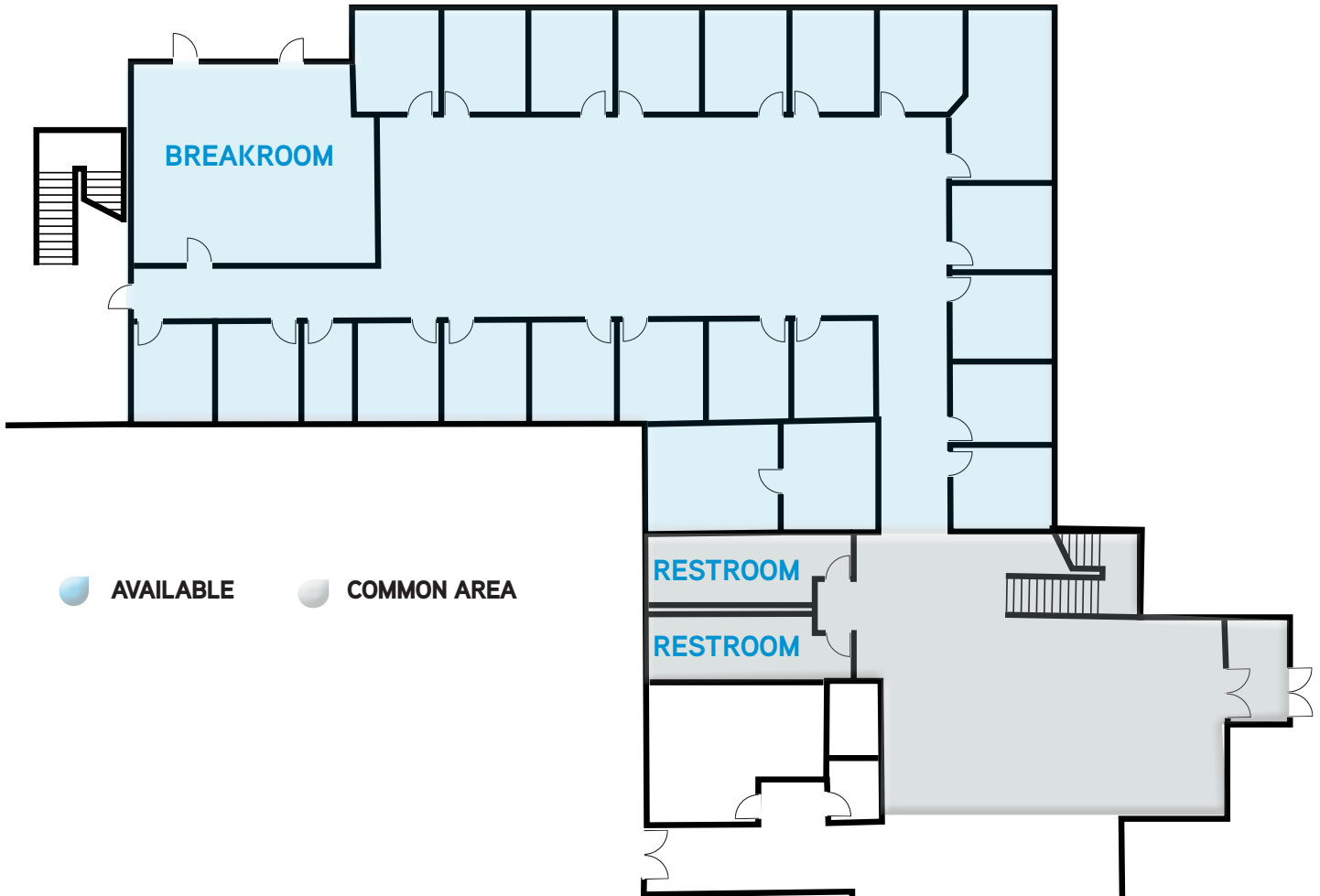
# Location



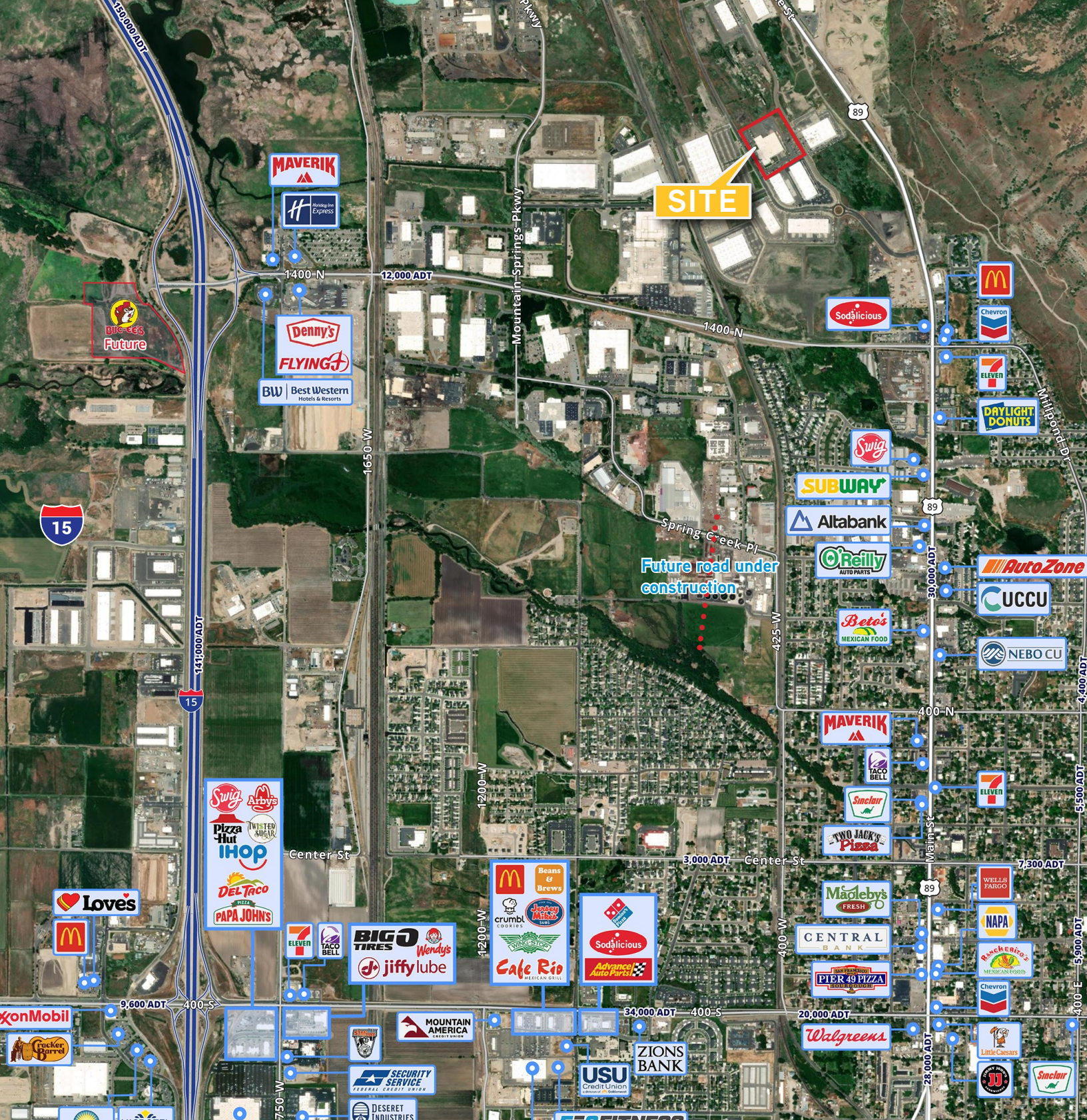


# Floor Plans

## Main Floor – 6,497 SF







## Colliers

2100 Pleasant Grove Blvd., Suite 200  
Pleasant Grove, UT 84062  
Main: +1 801 947 8300  
colliers.com

## Brandon Huntsman

Executive Vice President  
+1 801 830 9232  
brandon.huntsman@colliers.com

## Josh Martin

Executive Vice President  
+1 801 830 2004  
josh.martin@colliers.com

This document has been prepared by Colliers International for advertising and general information only. Colliers International makes no guarantees, representations or warranties of any kind, expressed or implied, regarding the information including, but not limited to, warranties of content, accuracy and reliability. Any interested party should undertake their own inquiries as to the accuracy of the information. Colliers International excludes unequivocally all inferred or implied terms, conditions and warranties arising out of this document and excludes all liability for loss and damages arising there from. This publication is the copyrighted property of Colliers International and/or its licensor(s). ©2025. All rights reserved.