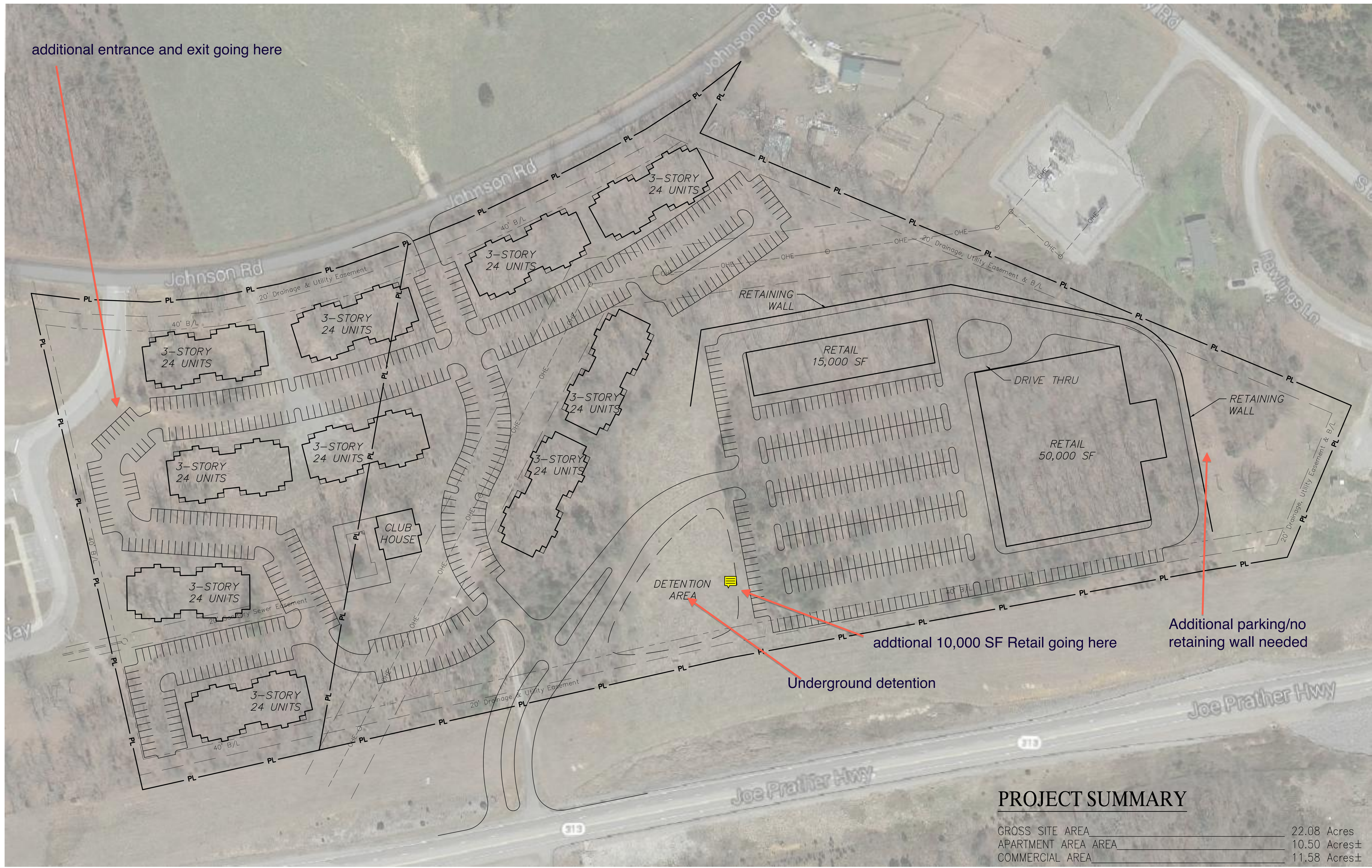


X:\Marketing\Working 2014\Radcliff - Rick Merritt\2014 - C01 - Radcliff.dwg PLOT DATE: April 11, 2014 - 11:31am



additional entrance and exit going here

Underground detention

additional 10,000 SF Retail going here

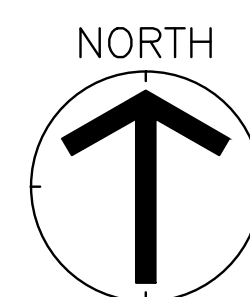
Additional parking/no retaining wall needed


PROJECT SUMMARY

GROSS SITE AREA	22.08 Acres
APARTMENT AREA AREA	10.50 Acres±
COMMERCIAL AREA	11.58 Acres±

NUMBER OF APARTMENTS	240 UNITS
PARKING PROVIDED	450 SPACES

RETAIL AREA	65,000 S.F.
PARKING PROVIDED	325 SPACES



ENGINEER:

HERITAGE ENGINEERING, LLC
 642 South 4th Street
 Suite 100
 Louisville, KY 40202
 (502) 562-1412
 (502) 562-1413 Fax

DEVELOPER:
RICK MERRITT
 1473 SOUTH 4TH STREET
 LOUISVILLE, KY 40208

PROJECT:
 CONCEPTUAL PLAN
 FOR
RADCLIFF APARTMENTS
 JOE PRATHER HWY / JOHNSON ROAD
 RADCLIFF, KENTUCKY

JOB NO: M2014
HORIZ. SCALE: 1"=60'
VERT SCALE: N/A
DESIGNED BY: JDC
DETAILED BY: JDC
CHECKED BY: SWH
DATE: APRIL 1, 2014

SHEET
C01