



RETAIL SPACE FOR LEASE

2001 N. RAND ROAD PALATINE, IL



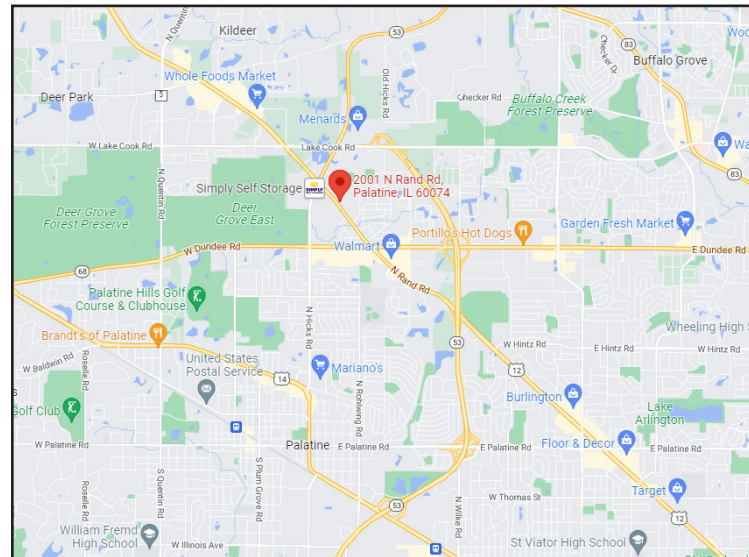
BUILDING FEATURES:

- 3,525 SF Retail office/ showroom Space Available ASAP
- Heavy Traffic counts over 30,300 vehicles per day
- Close proximity to shopping and dining
- Located just north of Dundee Rd on busy Rand Rd (Rt 12) near Rt-53
- Vacant suites are in move in condition
- Over 257,000 consumers in a 5 mile radius
- 24-hour tenant access & tenant controlled HVAC

- Ideal for retail or office users
- Tenant Signage on busy Rand Road
- Building Monument sign in the heart of the Rand Rd retail corridor
- **Rental Rate: \$19-00-\$22.00 PSF Modified Gross**

AVAILABLE SPACE:

| SUITE | SIZE (SF) | Available |
|-------|-----------|-----------|
| H | 3,525 SF | ASAP |



FOR MORE INFORMATION:

RANDY OLCZYK
 Direct: 847.246.9611
 randy@chicagolandcommercial.com

TOM CALLAHAN
 Direct: 847.246.9636
 Tom@chicagolandcommercial.com



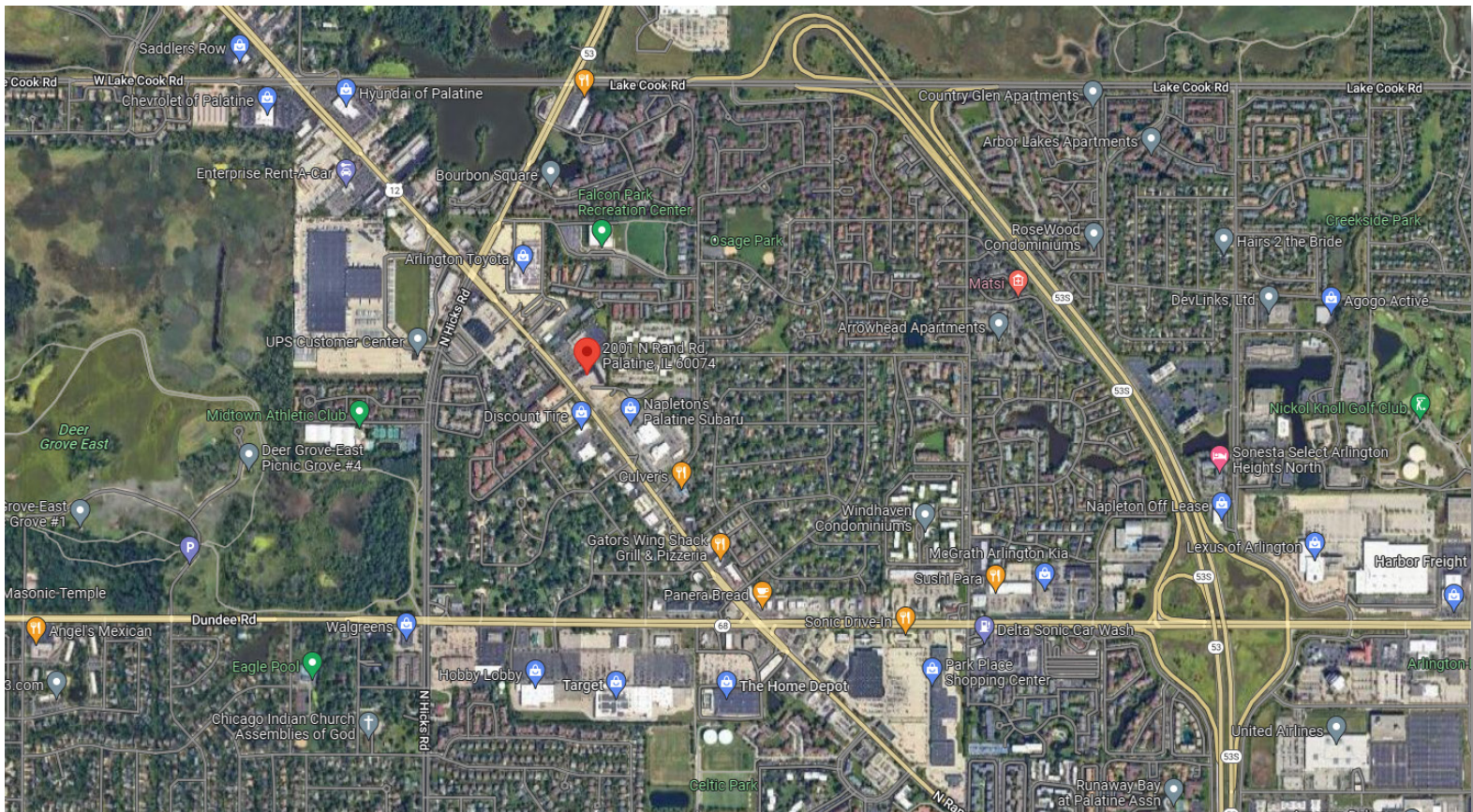
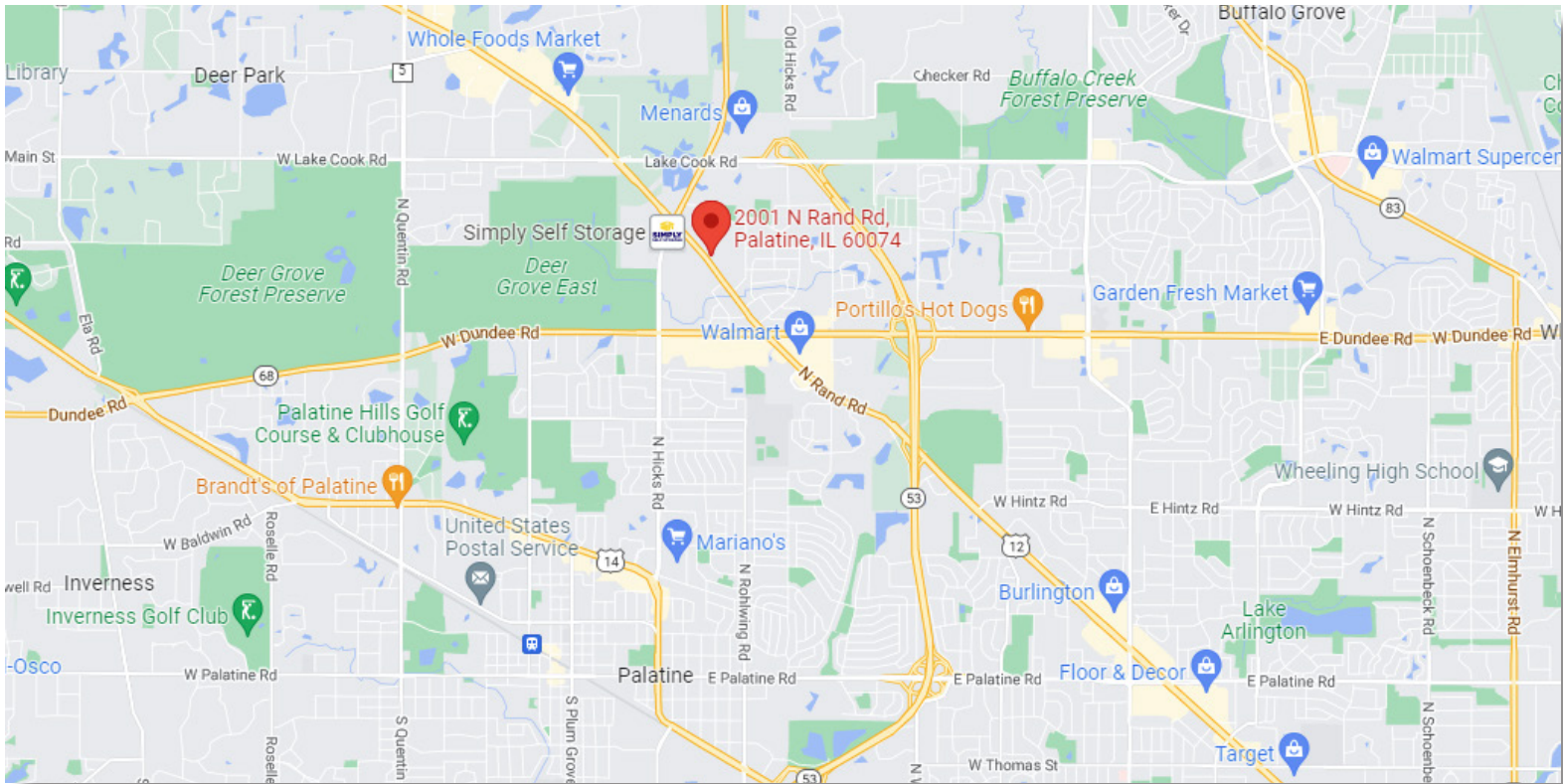
4811 Emerson Ave Suite 112, Palatine, IL



RETAIL SPACE FOR LEASE

2001 N. RAND ROAD PALATINE, IL

AREA MAPS





RETAIL SPACE FOR LEASE

2001 N. RAND ROAD PALATINE, IL

BUILDING PHOTOGRAPHS





RETAIL SPACE FOR LEASE

2001 N. RAND ROAD PALATINE, IL

PHOTOS:

SUITE H (3,525 SF)





RETAIL SPACE FOR LEASE

2001 N. RAND ROAD PALATINE, IL

FLOORPLAN:

SUITE H (3,525 SF)

