



CORPORATE HEADQUARTERS

PROFESSIONAL OFFICE SPACE FOR LEASE



28005 SMYTH DR, VALENCIA, CA 91355

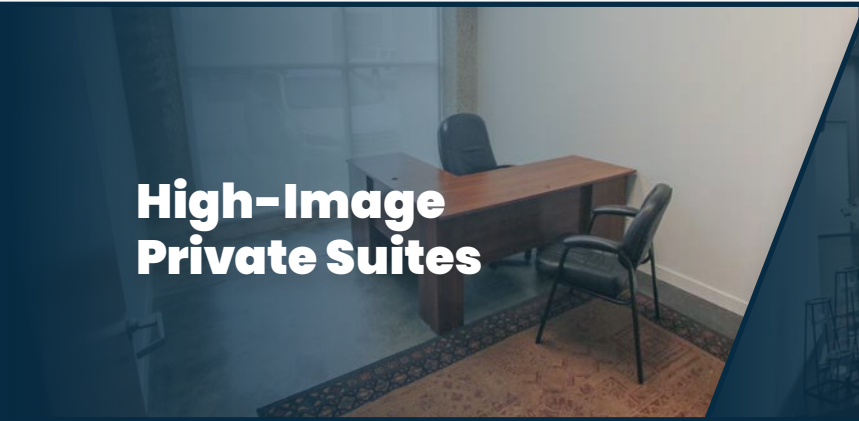


CORPORATE HEADQUARTERS

28005 Smyth Dr. Valencia, CA 91355

Stratton Commercial Real Estate offices are a full-service solution for your business and office needs. We've combined convenient and cost-effective private office space with the many services required by growing small businesses.

Stratton offices are designed to be an extension of your business, giving you access to amenities usually reserved for much larger corporations. Located in the High Ridge Business Square just minutes from the Valencia Westfield Mall, Hyatt Conference Center, I-5 Freeway & 126 Highway. Whatever challenges business throws at you, be ready at Stratton Commercial Real Estate Executive Suites.



**High-Image
Private Suites**



**Professional
Reception Services**



**Business Internet
& Telephone**

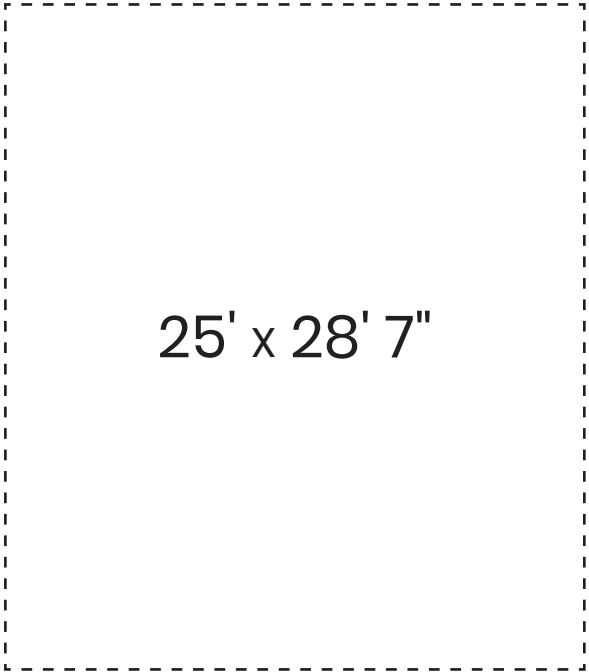


**Large Occupancy
Conference Rooms**

OTHER SERVICES: MAILBOX, AMPLE PARKING, JANITORIAL, 24/7 ACCESS, VIDEO SURVEILLANCE, NETWORKED COPIER & SCANNER, TENANT CAFE, COMPLIMENTARY COFFEE

Large Conference Room

RECONFIGURABLE TO SUIT YOUR NEEDS



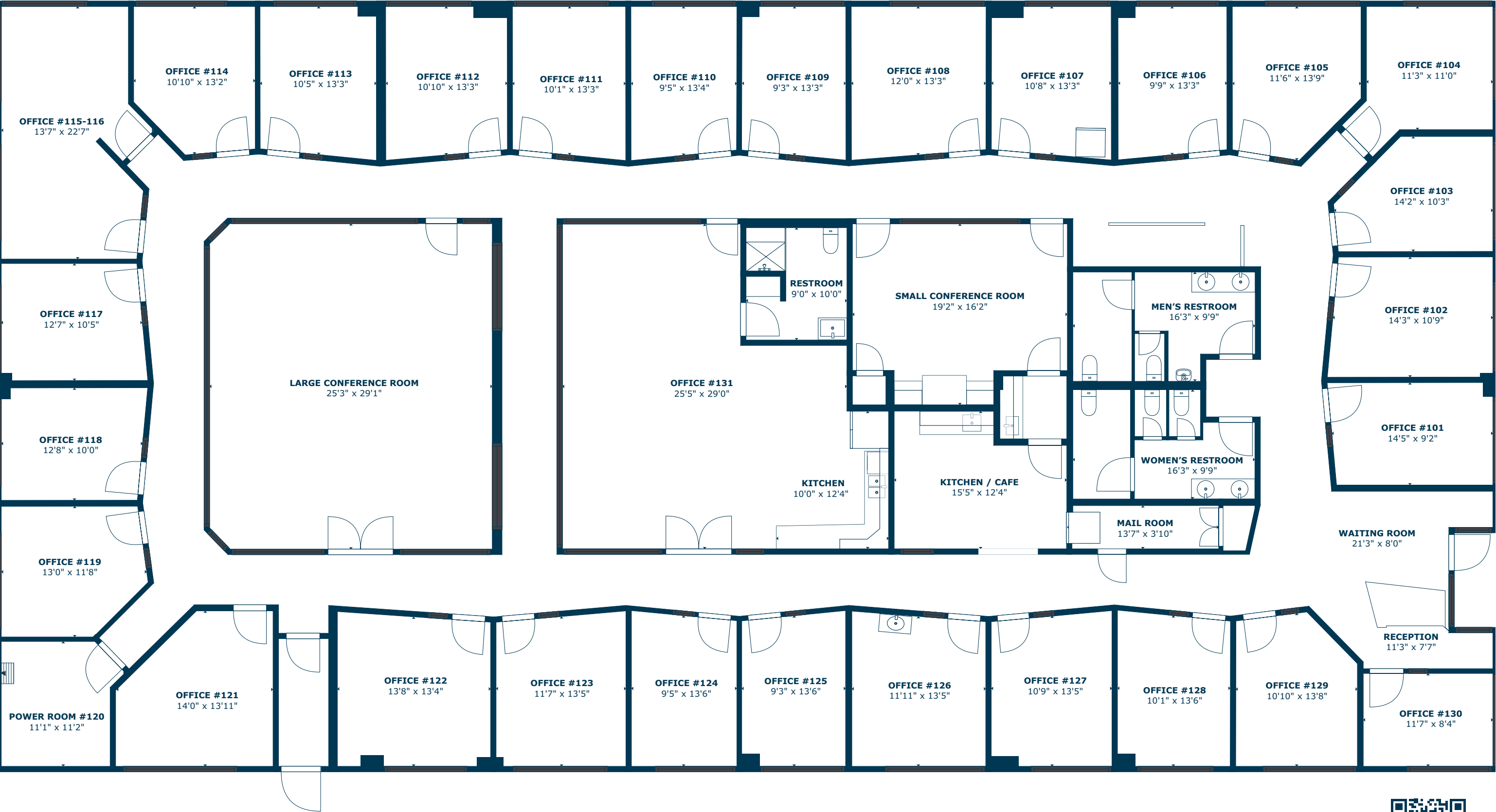
Make your next presentation or business meeting a memorable one with the Large Conference Room at Stratton Commercial Real Estate offices. Equipped with ample seating, white board, integrated sound, screen and conferencing systems.

Public Reservations Available

Call For Pricing
661-702-9700

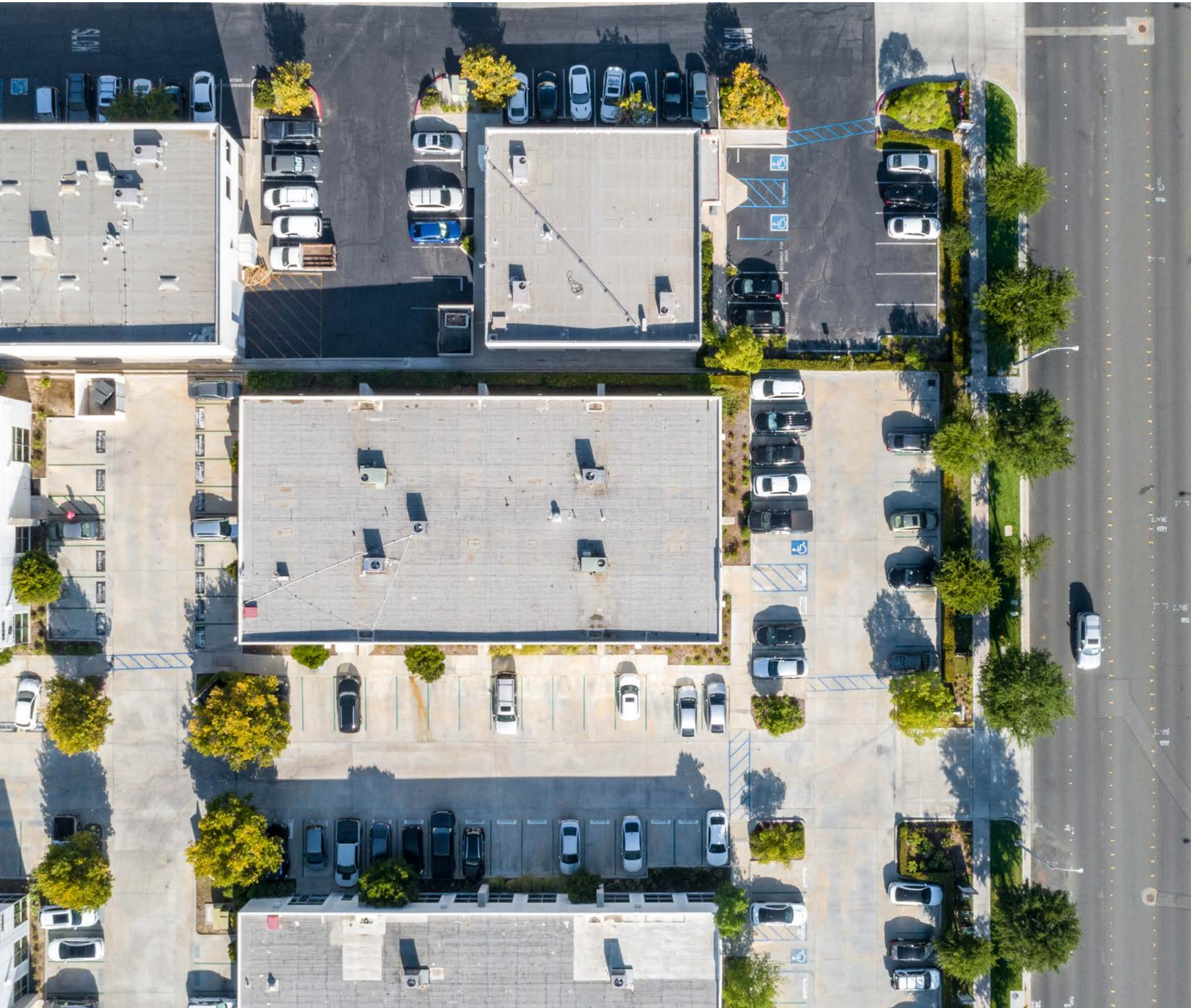






3D TOUR
SCAN, TAP or CLICK!





28005 SMYTH DRIVE

VALENCIA, CA 91355

FOR MORE INFORMATION:



Robert Stratton

CEO/President - DRE #01182000

Cell: 661-212-5699 | Office: 661-702-9700

Robert@StrattonCRE.com

The information in this brochure has been obtained from sources believed to be reliable. While we do not doubt its accuracy, we have not verified it and make no guarantee, warranty or representation about it. It is your responsibility to independently confirm its accuracy and completeness.

