

FOR SUBLEASE OFFICE SPACE



OFFERING SUMMARY

Lease Rate:	\$2.15 SF/month (MG)
Building Size:	21,600 SF
Available SF:	800 SF
Lot Size:	1.32 Acres

EXCLUSIVELY LISTED BY:

Kevin Hamblin

Associate
805.277.4022 Direct
khamblin@naicapital.com
CA DRE #01905116

Bruce A. Hamous, CCIM

Vice President
805.277.4023 Direct
bhamous@naicapital.com
CA DRE #01073432

PROPERTY HIGHLIGHTS

- 2nd Floor Office Space
- Large Windows / Lots of Natural Light
- 2 Large Offices + Large Bullpen
- An Abundance of Parking
- Easy Access to 101 Freeway
- Next to Berniece Bennett Park
- Childcare Services Nearby

DEMOGRAPHICS	1 MILE	5 MILES	10 MILES
Total Households	2,921	35,947	102,575
Total Population	6,370	92,082	280,027
Average HH Income	\$205,924	\$192,350	\$184,545



www.naicapital.com

PROPERTY PHOTOS



Kevin Hamblin

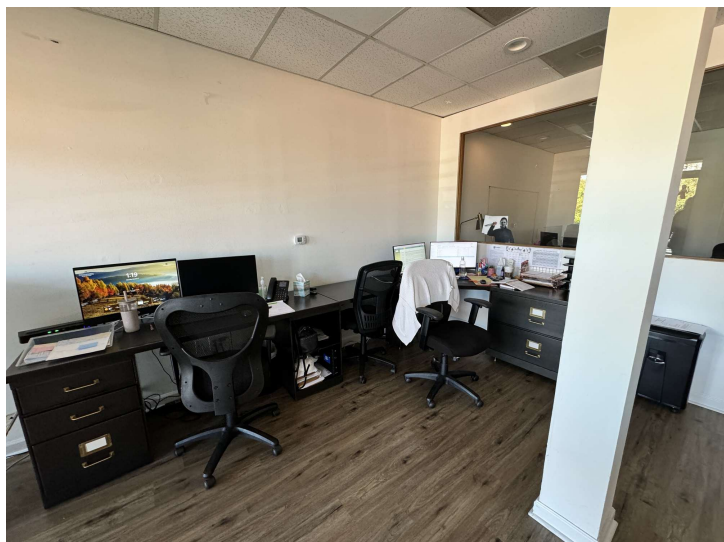
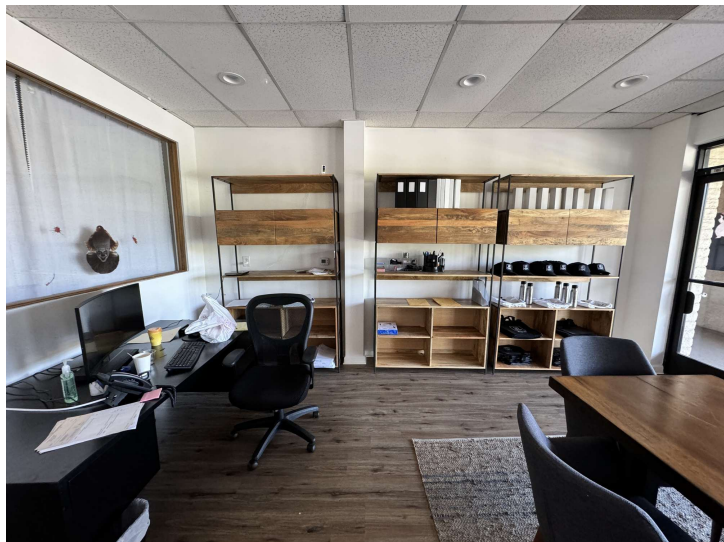
Associate
805.277.4022 Direct
khamblin@naicapital.com
CA DRE #01905116

Bruce A. Hamous, CCIM

Vice President
805.277.4023 Direct
bhamous@naicapital.com
CA DRE #01073432

No warranty, express or implied, is made as to the accuracy of the information contained herein. This information is submitted subject to errors, omissions, change of price, rental or other conditions, withdrawal without notice, and is subject to any special listing conditions imposed by our principals. Cooperating brokers, buyers, tenants and other parties who receive this document should not rely on it, but should use it as a starting point of analysis, and should independently confirm the accuracy of the information contained herein through a due diligence review of the books, records, files and documents that constitute reliable sources of the information described herein. Logos are for identification purposes only and may be trademarks of their respective companies. NAI Capital Commercial, Inc. CAL DRE Lic. #02130474

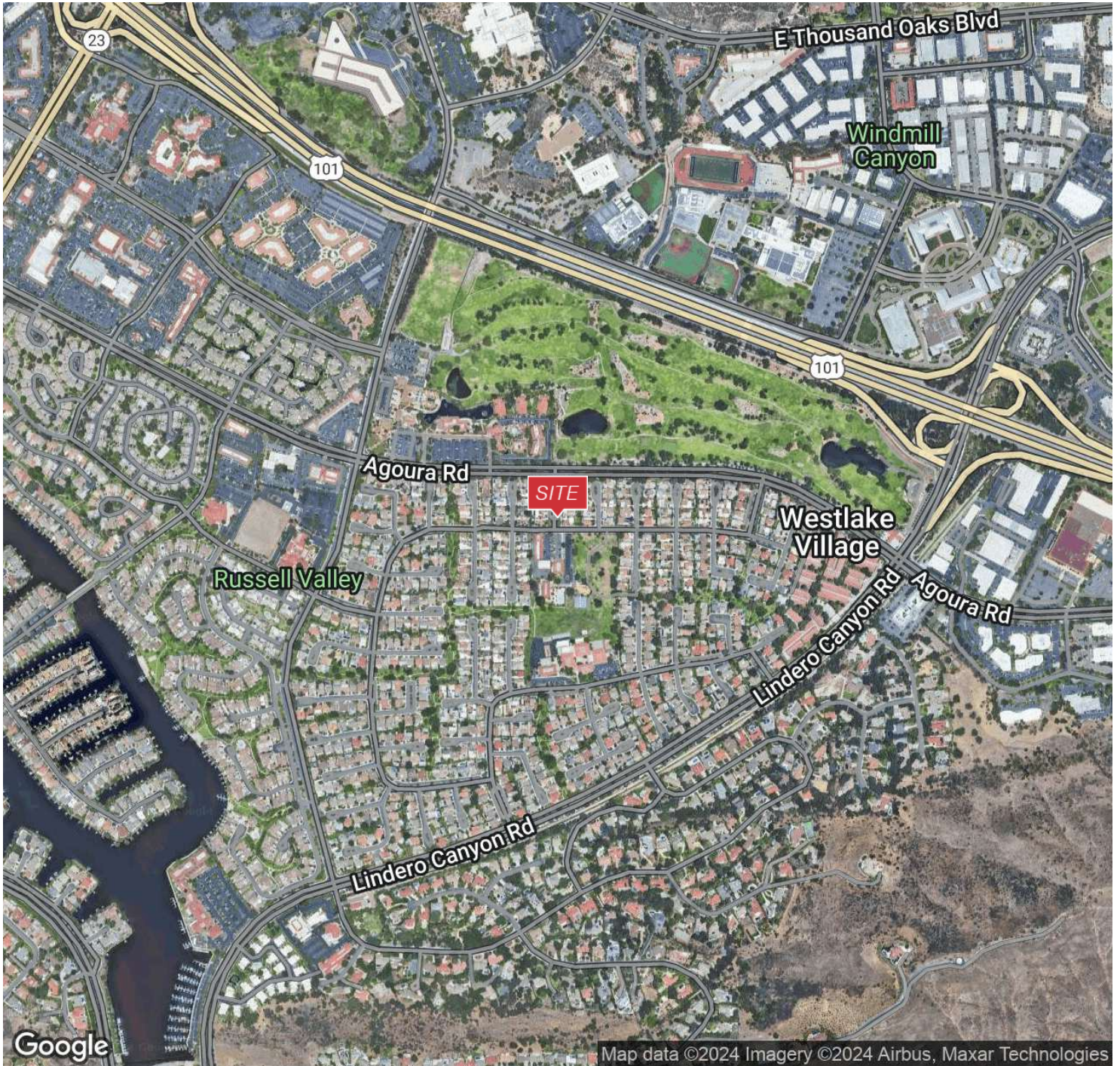
ADDT'L PROPERTY PHOTOS



Kevin Hamblin
Associate
805.277.4022 Direct
khamblin@naicapital.com
CA DRE #01905116

Bruce A. Hamous, CCIM
Vice President
805.277.4023 Direct
bhamous@naicapital.com
CA DRE #01073432

No warranty, express or implied, is made as to the accuracy of the information contained herein. This information is submitted subject to errors, omissions, change of price, rental or other conditions, withdrawal without notice, and is subject to any special listing conditions imposed by our principals. Cooperating brokers, buyers, tenants and other parties who receive this document should not rely on it, but should use it as a starting point of analysis, and should independently confirm the accuracy of the information contained herein through a due diligence review of the books, records, files and documents that constitute reliable sources of the information described herein. Logos are for identification purposes only and may be trademarks of their respective companies. NAI Capital Commercial, Inc. CAL DRE Lic. #02130474



Kevin Hamblin

Associate
805.277.4022 Direct
khamblin@naicapital.com
CA DRE #01905116

Bruce A. Hamous, CCIM

Vice President
805.277.4023 Direct
bhamous@naicapital.com
CA DRE #01073432

No warranty, express or implied, is made as to the accuracy of the information contained herein. This information is submitted subject to errors, omissions, change of price, rental or other conditions, withdrawal without notice, and is subject to any special listing conditions imposed by our principals. Cooperating brokers, buyers, tenants and other parties who receive this document should not rely on it, but should use it as a starting point of analysis, and should independently confirm the accuracy of the information contained herein through a due diligence review of the books, records, files and documents that constitute reliable sources of the information described herein. Logos are for identification purposes only and may be trademarks of their respective companies. NAI Capital Commercial, Inc. CAL DRE Lic. #02130474