

# 2161 Franklin Drive NE

Palm Bay, FL 32905

**New Construction / Centrally Located / Multiple Unit Sizes Available**



## OFFERING SUMMARY

**Available SF:** 3,500 - 10,500 SF

**Lease Rate:** \$15 SF/yr (NNN)

**Acreage:** 1.61 Acres

**Facility SF:** 12,250 SF

**Zoning:** City of Palm Bay Light Industrial & Warehousing (LI)

**OPEX:** Est. \$3.50 PSF OPEX (Includes Water)

## PROPERTY OVERVIEW

Unit 2-3: Est. 192 SF Office + 1 ADA Restroom + 3,268 SF Warehouse = 3,500 SF Dehumidified Warehouse. Dimensions est. 50' Wide x 70' Deep. LED Lighting.

Units 4-7 = 7,000 SF Shell Space. Concrete Flooring. No Lighting. No Office. Dimensions est. 100' Wide x 70' Deep. Ready for Tenant Customization

Units can be Leased Individually or Combined for up to 10,500 SF  
 All Units 100% Fire Sprinklered. Concrete Flooring. Est. 19' - 21' Clear Height in Warehouse  
 Each Unit has One 12' Wide x 14' Tall +/- Grade Level Door. Onsite CCTV Monitoring  
 City Water/Sewer, Fiber, 3-Phase 120/208v 800 Amp (Expandable Amperage 2000 amps+)  
 3 Parking Spaces/unit + 5 Common Spaces. Potential for Outdoor Storage/Overflow Parking

## LOCATION OVERVIEW

Strategically positioned just off of Palm Bay Road which is the primary area connector between Interstate 95, Babcock Street and US1. Surrounding employers include L3Harris, ABC Supply, Tibbetts Lumber, and Leonardo DRS to name a few. Lots of schools, restaurants, healthcare, and childcare in the area. Make this the future home for your business today!



**Michael S. Ullian, President, CCIM, SIOR Zach Ullian, SIOR**

Licensed Real Estate Broker  
 Cell: 321.258.7556  
 mike@ullianrealty.com

Broker Associate  
 Cell: 321.750.3439  
 zach@ullianrealty.com



# 2161 Franklin Drive NE

Palm Bay, FL 32905

Potential Outdoor Storage or Overflow Vehicle Parking



**Michael S. Ullian, President, CCIM, SIOR Zach Ullian, SIOR**

Licensed Real Estate Broker  
Cell: 321.258.7556  
mike@ullianrealty.com

Broker Associate  
Cell: 321.750.3439  
zach@ullianrealty.com

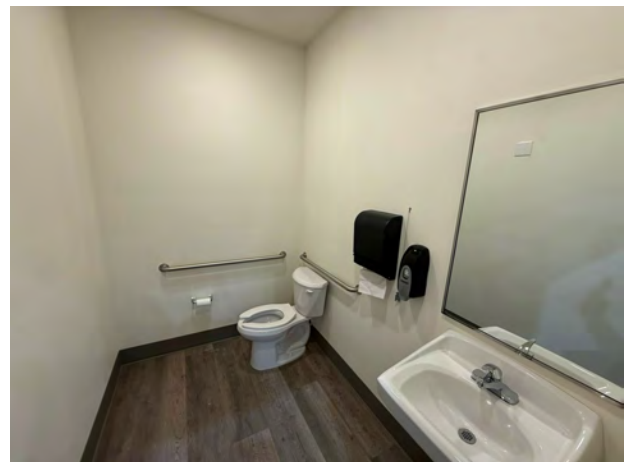




# 2161 Franklin Drive NE

Palm Bay, FL 32905

Units 2-3: 3,500 SF - Dehumidified Warehouse



Individual Members  
Michael S. Ullian

**Michael S. Ullian, President, CCIM, SIOR Zach Ullian, SIOR**

Licensed Real Estate Broker  
Cell: 321.258.7556  
mike@ullianrealty.com

Broker Associate  
Cell: 321.750.3439  
zach@ullianrealty.com



**SIOR**  
Individual Members  
Michael S. Ullian  
Zachary M. Ullian

# 2161 Franklin Drive NE

Palm Bay, FL 32905

Units 4-7: 7,000 SF - Gray Shell Condition. Ready for Tenant Customization



Individual Members  
Michael S. Ullian

**Michael S. Ullian, President, CCIM, SIOR Zach Ullian, SIOR**

Licensed Real Estate Broker  
Cell: 321.258.7556  
mike@ullianrealty.com

Broker Associate  
Cell: 321.750.3439  
zach@ullianrealty.com

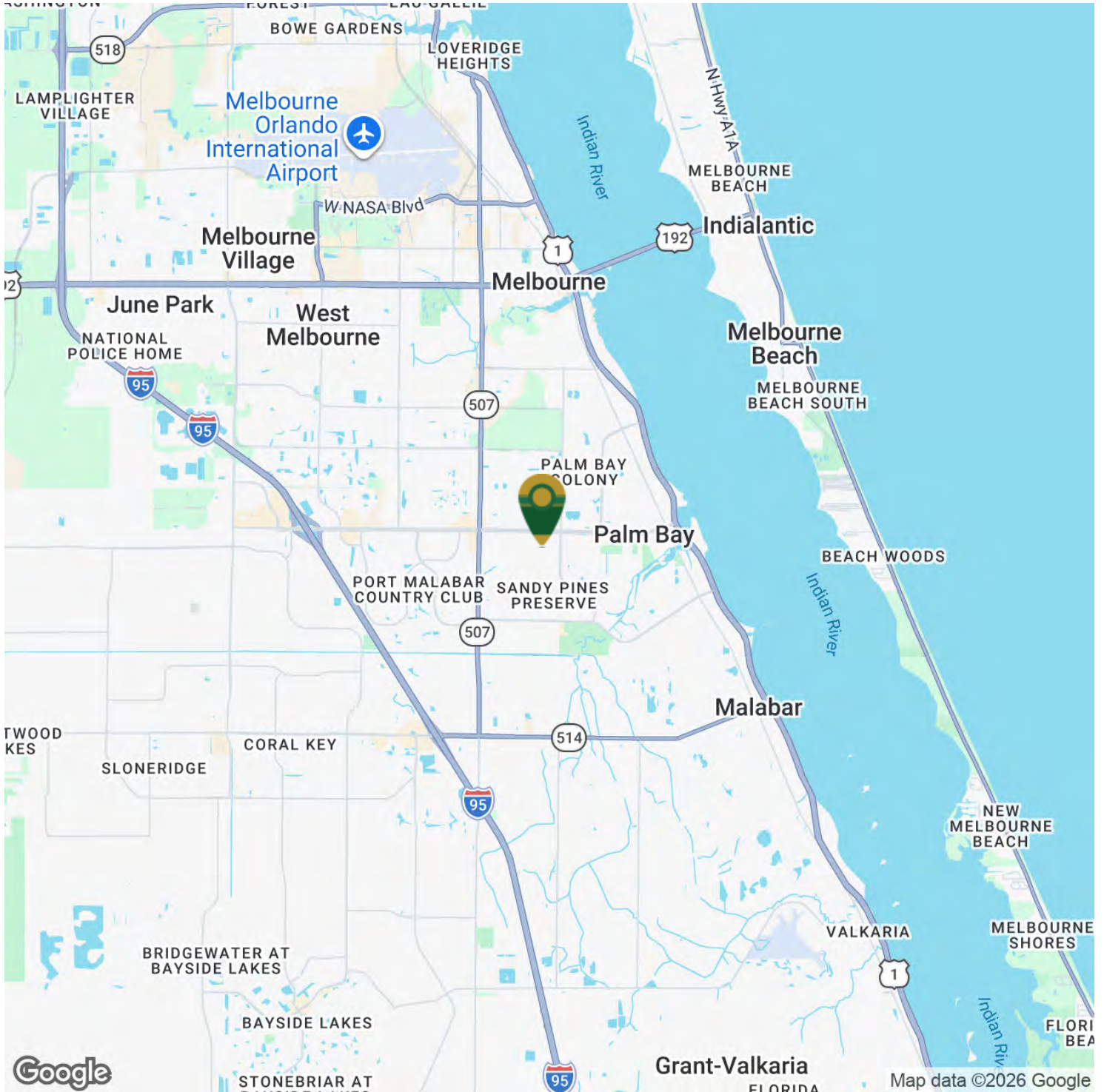


**SIOR**  
Individual Members  
Michael S. Ullian  
Zachary M. Ullian

# 2161 Franklin Drive NE

Palm Bay, FL 32905

## Location Map



Google

Map data ©2026 Google



Individual Members  
Michael S. Ullian

**Michael S. Ullian, President, CCIM, SIOR Zach Ullian, SIOR**

Licensed Real Estate Broker  
Cell: 321.258.7556  
mike@ullianrealty.com

Broker Associate  
Cell: 321.750.3439  
zach@ullianrealty.com



**SIOR**  
Individual Members  
Michael S. Ullian  
Zachary M. Ullian