

# For Sublease

## Office & Showroom Space



### ±5,566 SF

#### Second floor office space

- Private offices and open space
- Kitchen / break room area
- Elevator access to second floor
- Extensive window line

### ±2,320 SF

#### First floor event space /showroom

- Access to shared courtyard
- Kitchenette space
- Vaulted ceilings
- Fireplace

### Property highlights

- 388 Devlin Road is a ±50,060 SF mixed-use project constructed in 2007
- High-quality materials and finishes throughout
- Abundant on-site parking
- Less than 10 minutes to downtown Napa
- Immediate access to Hwy 29



#### CHRIS NEEB

RE Lic# 01324612  
+1 707 495 7777  
chris.neeb@jll.com

#### LAURA DUFFY

RE Lic# 01922792  
+1 415 686 0255  
laura.duffy@jll.com

#### GLEN DOWLING

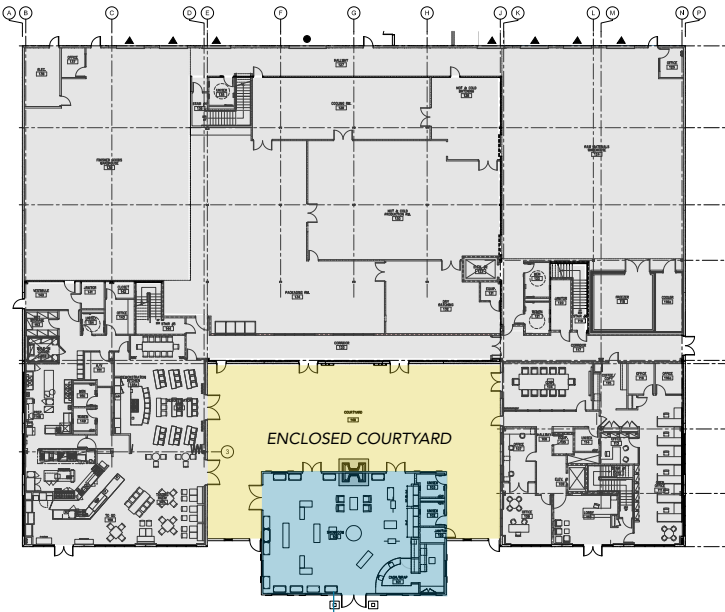
RE Lic# 00890450  
+1 707 227 7800  
glen.dowling@jll.com

#### MATT BRACCO

RE Lic# 01185434  
+1 925 200 3537  
matt.bracco@jll.com

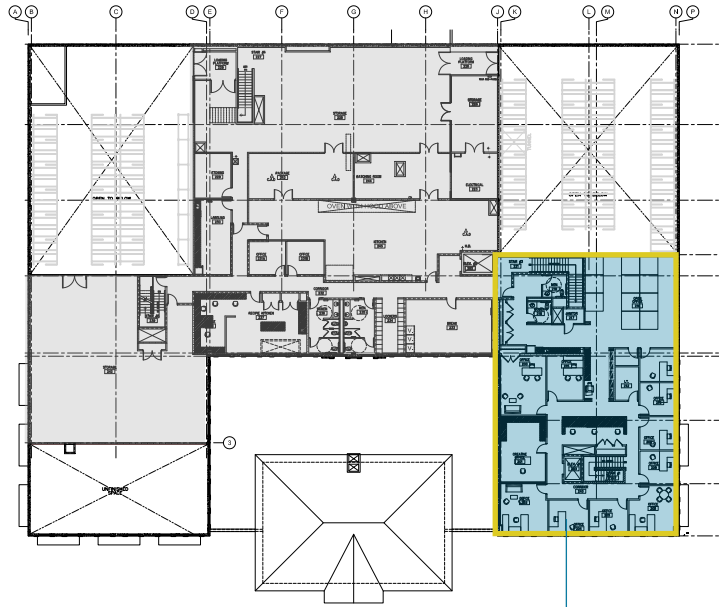


## FLOOR 1

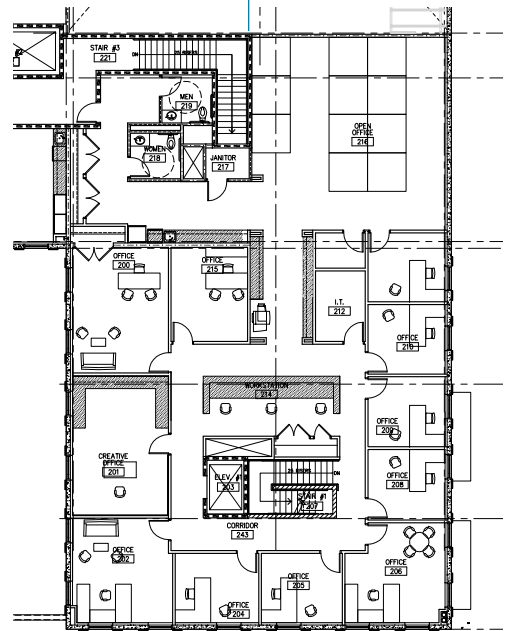
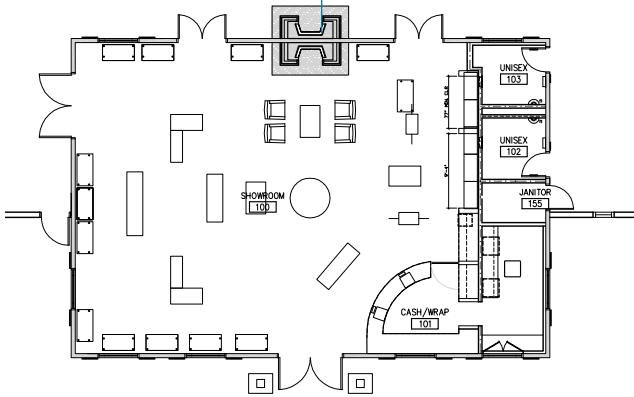


±2,320 SF  
 EVENT SPACE /  
 SHOWROOM

## FLOOR 2



±5,566 SF OFFICE



CLICK FOR  
 VIRTUAL TOUR

# Prime Location



**DRIVE TIMES FROM  
388 DEVLIN**

**Downtown Napa**  
12 minutes

**Sonoma**  
25 minutes

**San Francisco**  
60 minutes

**Oakland Airport**  
70 minutes

**Sacramento**  
70 minutes



**CHRIS NEEB**  
RE Lic# 01324612  
+1 707 495 7777  
chris.neeb@jll.com

**LAURA DUFFY**  
RE Lic# 01922792  
+1 415 686 0255  
laura.duffy@jll.com

**GLEN DOWLING**  
RE Lic# 00890450  
+1 707 227 7800  
glen.dowling@jll.com

**MATT BRACCO**  
RE Lic# 01185434  
+1 925 200 3537  
matt.bracco@jll.com

