



Warehouse in Doral

PRESENTED BY MIGUEL E. HERNANDEZ P.A.

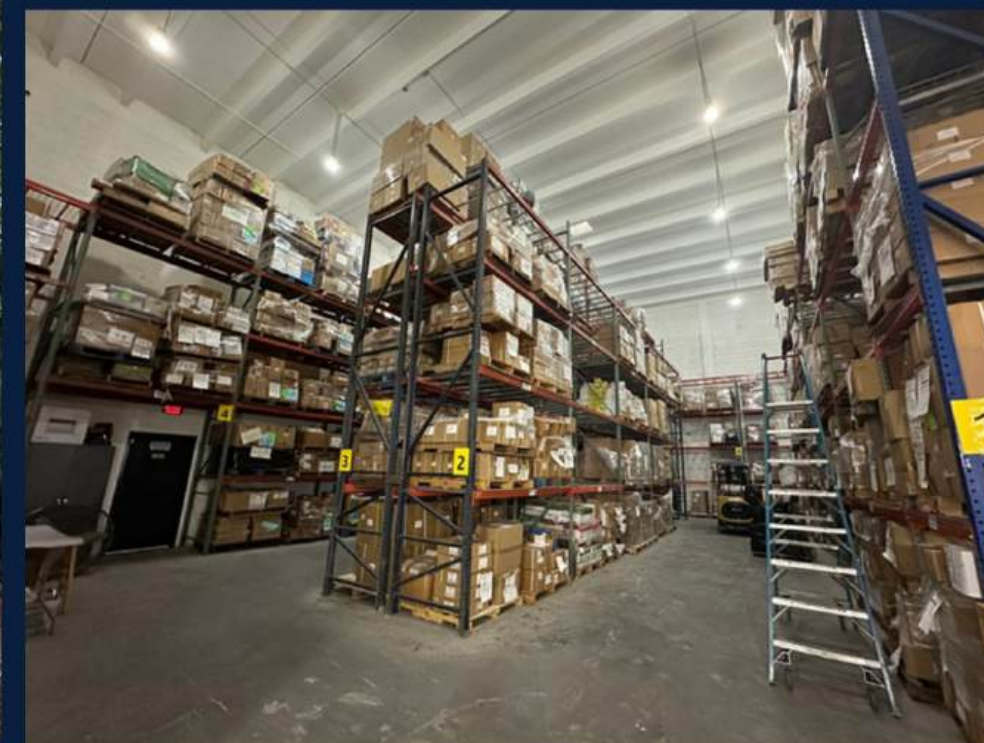


FEATURES ▼

- Built in 1997
- HOA: \$2,831/month
- Taxes: \$29,296 annually
- Zoned: Industrial (Zoning 7700)
- Dock door height is 14' SF and then leads into 30' SF high ceilings.

CAM INCLUDES: ▼

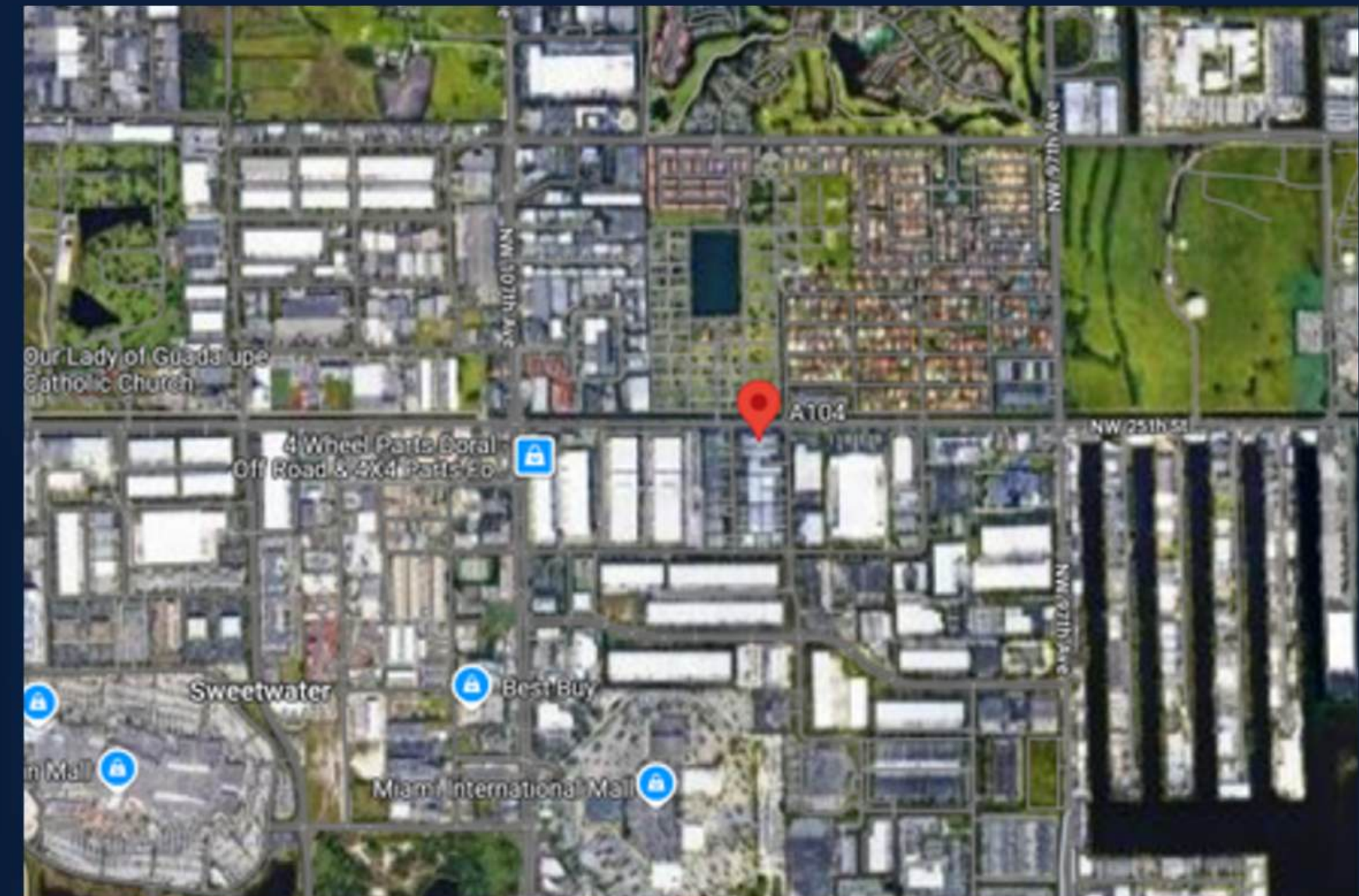
- Landscaping
- Parking lot maintenance & lighting
- Property management fees
- Cleaning of the common areas
- Repairs of common areas
- Trash removal
- Exterior building maintenance
- Insurance of infrastructure & roof



OPPORTUNITY IN DORAL **INDUSTRIAL WAREHOUSE FOR SALE**

10200 NW 25th #113 St Doral, FL 33172

This excellent industrial warehouse is strategically located in Doral, one of the most dynamic areas in South Florida. +/- 7,384 total SF. Dock door height is 14' SF and then leads into 30' SF high ceilings., ample parking. Ideal for expanding businesses or investors seeking profitability in a prime location.



MAIN FEATURES

- Address: 10200 NW 25th St #113, Doral, FL 33172
- +/- 7,384 total SqFt
- Dock door height is 14' SF and then leads into 30' SF high ceilings.
- Ample parking with additional spaces
- Use: Warehouse, light industrial, or combination retail/warehouse
- Corporate property, ready to move in



www.negociomiami.com



info@negociomiami.com







MIGUEL E. HERNANDEZ P.A.

REAL ESTATE ADVISOR - AVANTI WAY



+1 (305) 748-0771



info@negociomiami.com



www.negociomiami.com

