



East Bend Plaza

15200-15262 E Seven Mile Rd, Detroit, MI 48205



JMC MANAGEMENT LLC
A FULL SERVICE BROKERAGE AND MANAGEMENT FIRM

Trena Edmondson

JMC Management, LLC

24500 Northwestern Hwy, Suite 100, Southfield, MI 48075

Trena.edmondson@jmcmanagement.com

(586) 427-9410 Ext: 113



East Bend Plaza

\$16.34 /SF/YR

Neighborhood Retail Center with wonderful tenant mix. This property is located at the busy 7 Mile and Hayes intersection. Ample parking and fantastic tenant mix!...

- Spacious Parking Lot
- Fantastic Management
- Busy Street
- Steps from Public Transit



Rental Rate:	\$16.34 /SF/YR
Property Type:	Shopping Center
Center Type:	Strip Center
Stores:	8
Center Properties:	1
Frontage:	568' on Seven Mile Road
Gross Leasable Area:	14,808 SF
Walk Score @:	66 (Somewhat Walkable)
Transit Score @:	53 (Good Transit)
Rental Rate Mo:	\$1.36 /SF/MO

1st Floor Ste 15220

Space Available	1,285 SF
Rental Rate	\$16.34 /SF/YR
Date Available	Now
Service Type	Modified Gross
Space Type	Relet
Space Use	Retail
Lease Term	Negotiable

Major Tenant Information

Tenant	SF Occupied	Lease Expired
Lape Soul Food	-	



15200-15262 E Seven Mile Rd, Detroit, MI 48205

Neighborhood Retail Center with wonderful tenant mix. This property is located at the busy 7 Mile and Hayes intersection. Ample parking and fantastic tenant mix!

Property Photos



Building Photo



Building Photo

East Bend Plaza 15200-15300 East Seven Mile Road



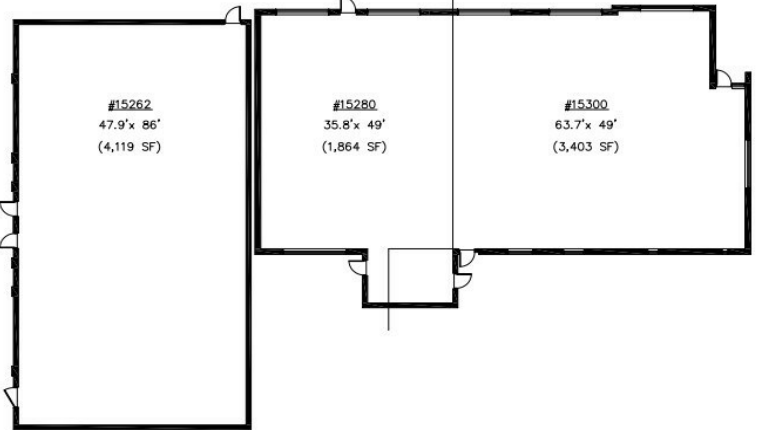
JMC MANAGEMENT LLC
A FULL SERVICE BROKERAGE AND MANAGEMENT FIRM

- NOTES:**
1. TENANT SPACE AREA CALCULATIONS WHERE EXISTING DEMISING WALLS ARE PRESENT; DETERMINED BY MEASUREMENT TO THE CENTER OF DEMISING WALLS/PARTITIONS AND TO THE EXTERIOR FACE OF EXTERIOR WALLS.
 2. INTERIOR TENANT SPACE WIDTH AND DEPTH DIMENSIONS ARE APPROXIMATE AS SHOWN. FOR EXACT WIDTH AND DEPTH DIMENSIONS, EACH TENANT SPACE SHOULD BE MEASURED BY A QUALIFIED PROFESSIONAL.
 3. THE ORIENTATION OF THE INDICATED NORTH ARROW MAY NOT BE TRUE NORTH, BUT IS SUBSTANTIALLY NORTH, AS SUCH, IT IS CALLED NORTH AND IS NOT INTENDED FOR NAVIGATIONAL USAGE.

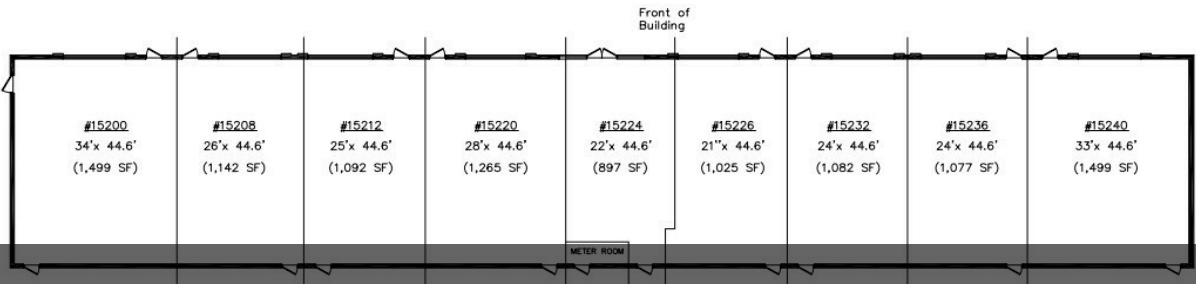
FLOOR PLAN
24 X 36 DRAWING SCALE: 1/8" = 1'-0"
12 X 18 DRAWING SCALE: 1/16" = 1'-0"



Facade Facing Street

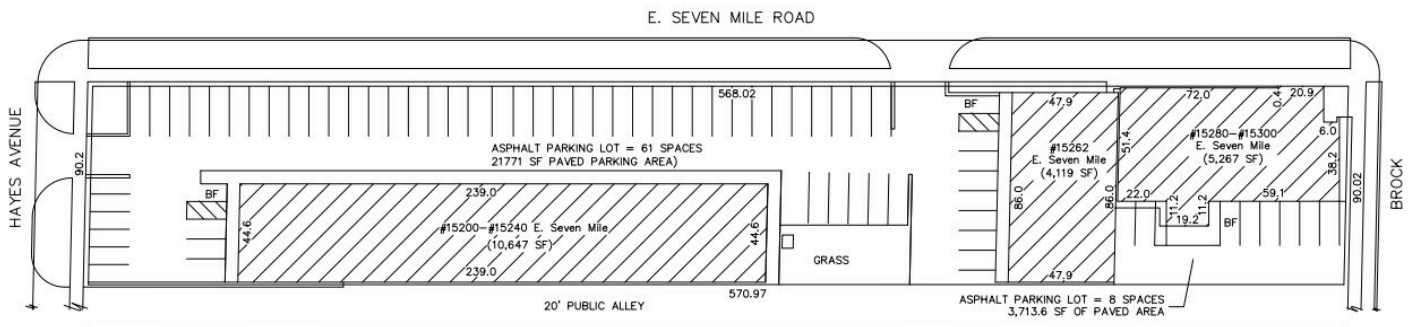


FLOOR PLAN
24 X 36 DRAWING SCALE: 1/8" = 1'-0"
12 X 18 DRAWING SCALE: 1/16" = 1'-0"



Floor Plan

East Bend Plaza 15200-15300 East Seven Mile Road



PARKING LOT LAYOUT
24 X 36 DRAWING SCALE: 1" = 20'-0"
12 X 18 DRAWING SCALE: 1" = 40'-0"



JMC MANAGEMENT LLC
A FULL SERVICE BROKERAGE AND MANAGEMENT FIRM

- NOTES:**
1. TENANT SPACE AREA CALCULATIONS WHERE EXISTING DEMISING WALLS ARE PRESENT; DETERMINED BY MEASUREMENT TO THE CENTER OF DEMISING WALLS/PARTITIONS AND TO THE EXTERIOR FACE OF EXTERIOR WALLS.
 2. INTERIOR TENANT SPACE WIDTH AND DEPTH DIMENSIONS ARE APPROXIMATE AS SHOWN. FOR EXACT WIDTH AND DEPTH DIMENSIONS, EACH TENANT SPACE SHOULD BE MEASURED BY A QUALIFIED PROFESSIONAL.