

Flex or Office Space for Lease in Gunbarrel

6000 SPINE ROAD | BOULDER, CO 80301

Suite 101

Size: 8,825 SF

Rate: \$14 - \$17 NNN

Available: 60 Days

OVERHEAD DOOR

SO FLEXY

Lookout! And we don't mean the road, we mean look out upon Gunbarrel's flexiest new availability. 6000 Spine offers 8,825 square feet of R&D flex space, with offices, 16' clear height, loading doors, plenty of power, and amenities like a gym, showers, locker room, and outdoor dining areas. See the floor plan for flexible options and decide on your perfect buildout.

PROPERTY HIGHLIGHTS

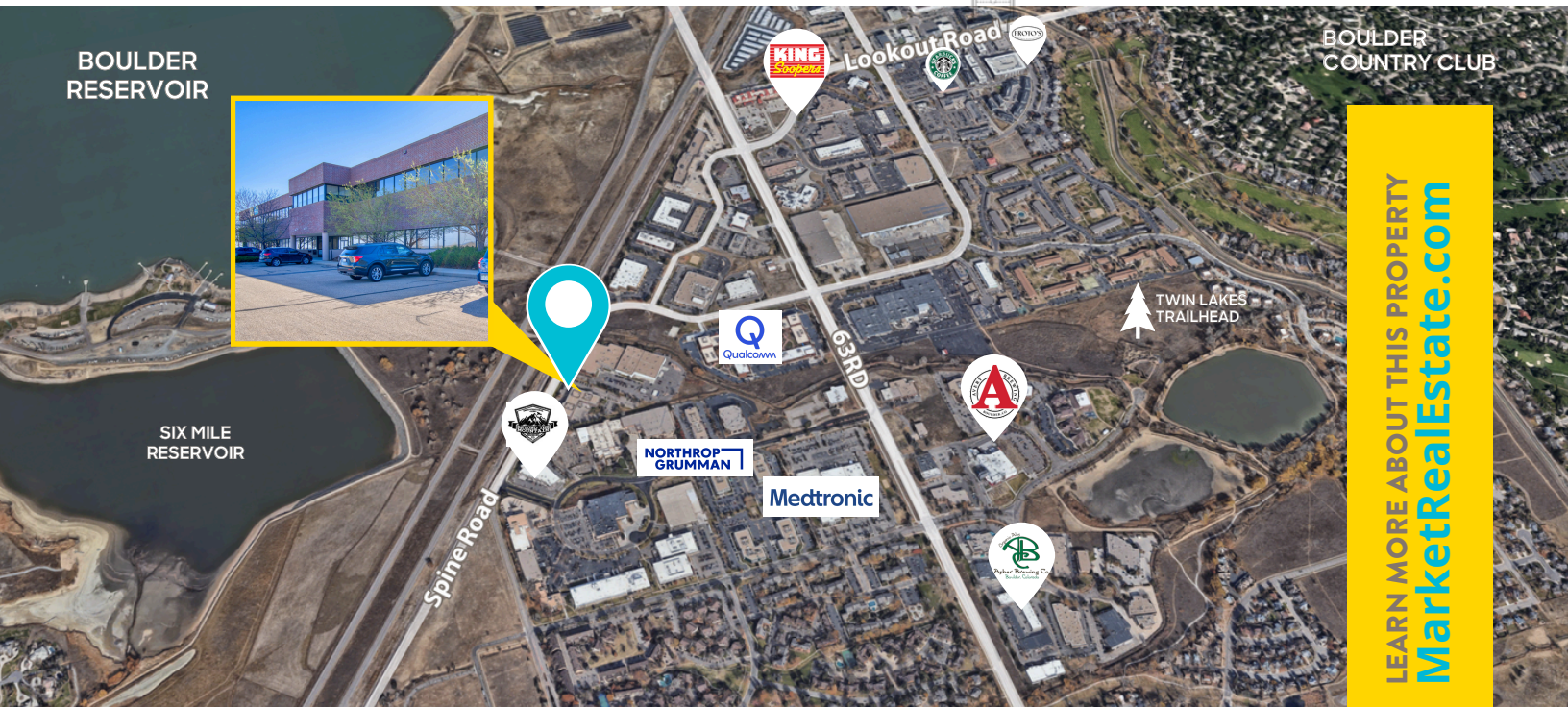
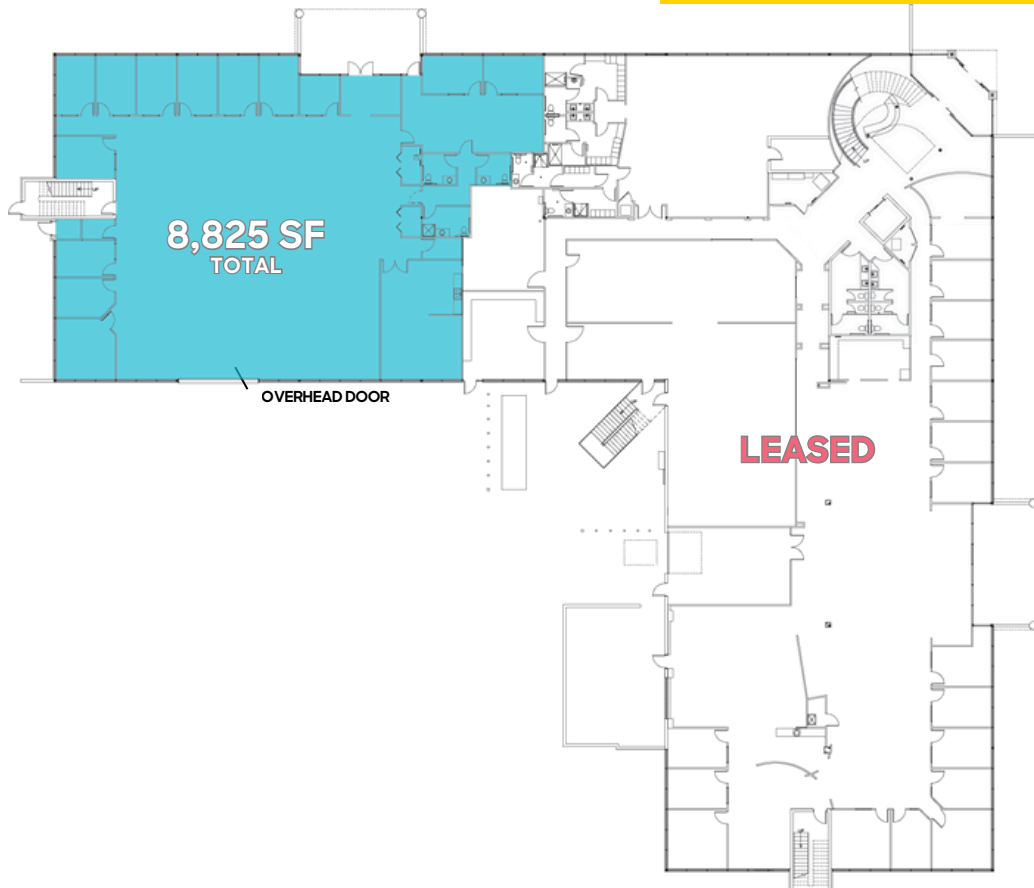
- Building signage with visibility from the Diagonal Highway is available
- Open production area / 9 Offices
- 16' clear height
- 8' overhead door
- Separate lab/storage room
- Large kitchen, conference room, private offices



[CLICK HERE](#)
for virtual tour



LEARN MORE ABOUT THIS PROPERTY
MarketRealEstate.com



LEARN MORE ABOUT THIS PROPERTY
MarketRealEstate.com

ANNIE LARNER

303 444 1344 Annie@MarketRealEstate.com

NATE LITSEY

303 444 4024 Nate@MarketRealEstate.com

m



LEARN MORE ABOUT THIS PROPERTY

MarketRealEstate.com