



Sentinel Warehousing and Distribution

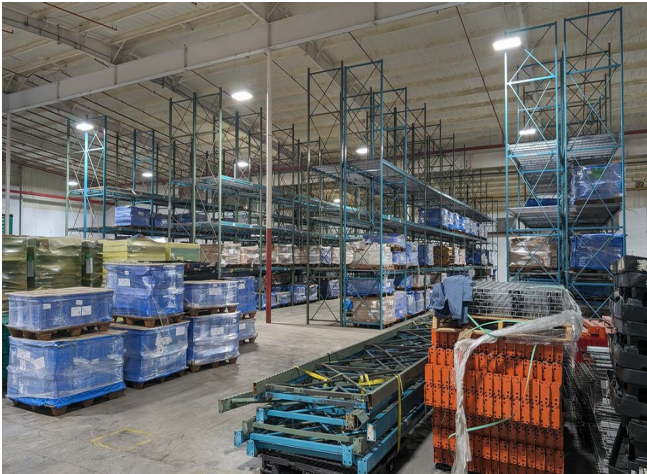
500 Memorial Dr, Nicholasville, KY 40356

Curt Eiden

Professional Expediting Inc.
423 Fairman Ct, Lexington, KY 40511
ceiden@gmail.com
(859) 509-1579

Sentinel Warehousing and Distribution

Welcome to Sentinel Warehousing!



Rental Rate: Upon Request

Property Type: Industrial

Property Subtype: Warehouse

Rentable Building Area: 198,097 SF

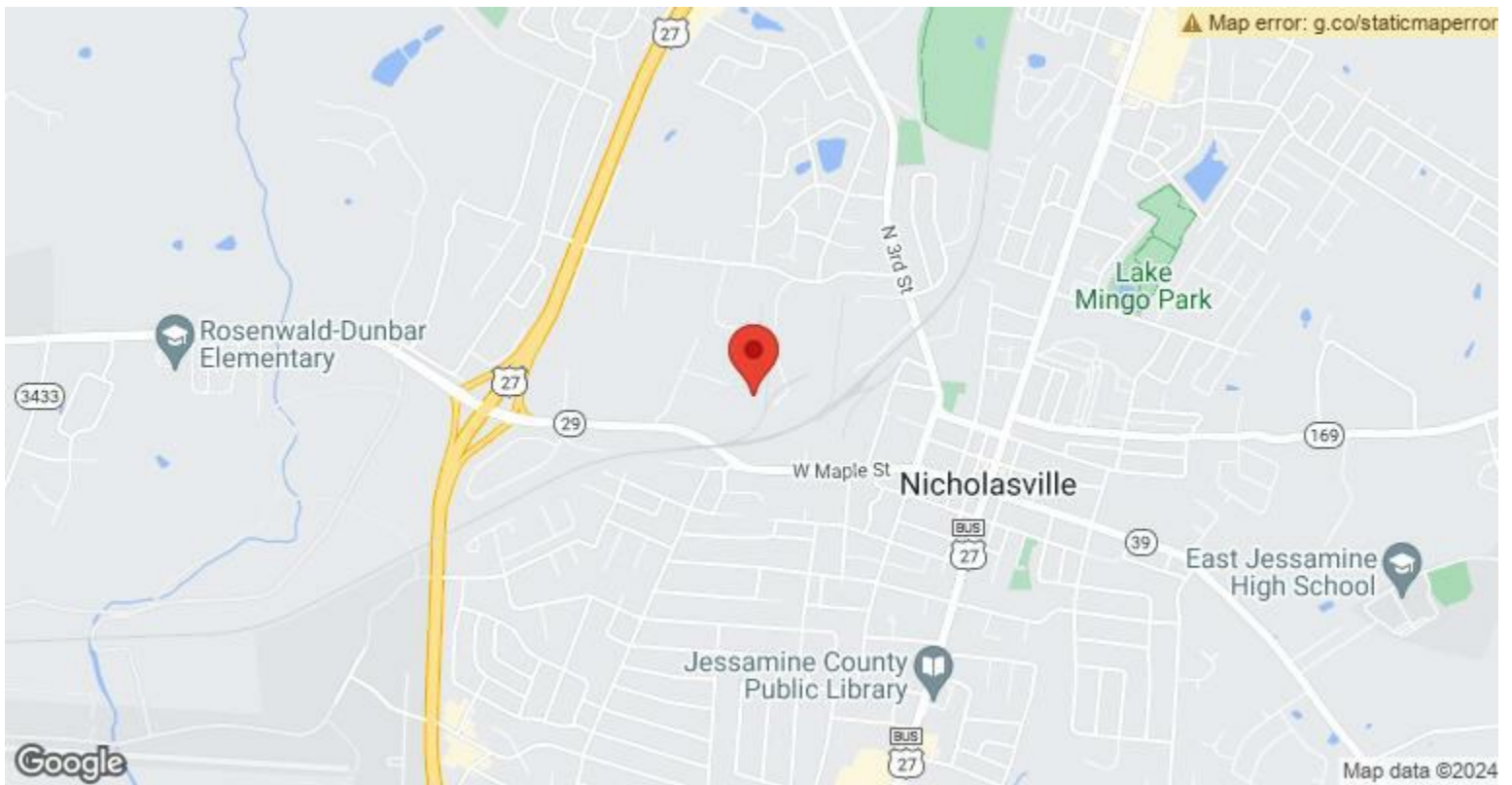
Year Built: 1978

Rental Rate Mo: Upon Request

The Space

Space Available	50,000 SF
Rental Rate	Upon Request
Date Available	Now
Service Type	TBD
Office Size	100 SF
Space Type	Relet
Space Use	Industrial

We currently have 50,000SF of recently renovated space available to rent out. We offer a variety of services such as loading and unloading, picking and packing, and inventory management. Please see our location description for more details.



500 Memorial Dr, Nicholasville, KY 40356

-Day to Day Operations

Our warehouse is fully staffed from 8-4 M-F. During business hours our staff provides services such as loading and unloading trucks (vans, sprinter vans, box trucks, flatbeds, reefers) and pulling and staging orders in addition to the many services outlined below. Outside of our normal business hours we have an on call staff 24/7/365 for any sort of warehousing or trucking expedite.

We also have flexible staffing options if you require business hours on Saturday as well.

-Transportation

We partner with our sister company, Professional Expediting, to meet all your trucking needs. We have sprinter vans, box trucks, and tractor trailers available 24/7. Our terminal is located 25 minutes away in Lexington, KY. As a trucking and warehousing company, we are able to provide exceptional service with great rates to and from our warehouses.

-Inventory management

We have our own Inventory Management System that we built in house that is highly customizable and can be adapted to fit your inventory needs. We work with you to understand your inventory requirements and build out a system which meets them.

-Crossdocking services

We keep 3,000-5,000SF available at all times for any crossdocking needs that may arise for any of our customers whether it is for a few hours or a few weeks.

-Short-term/Long-term storage

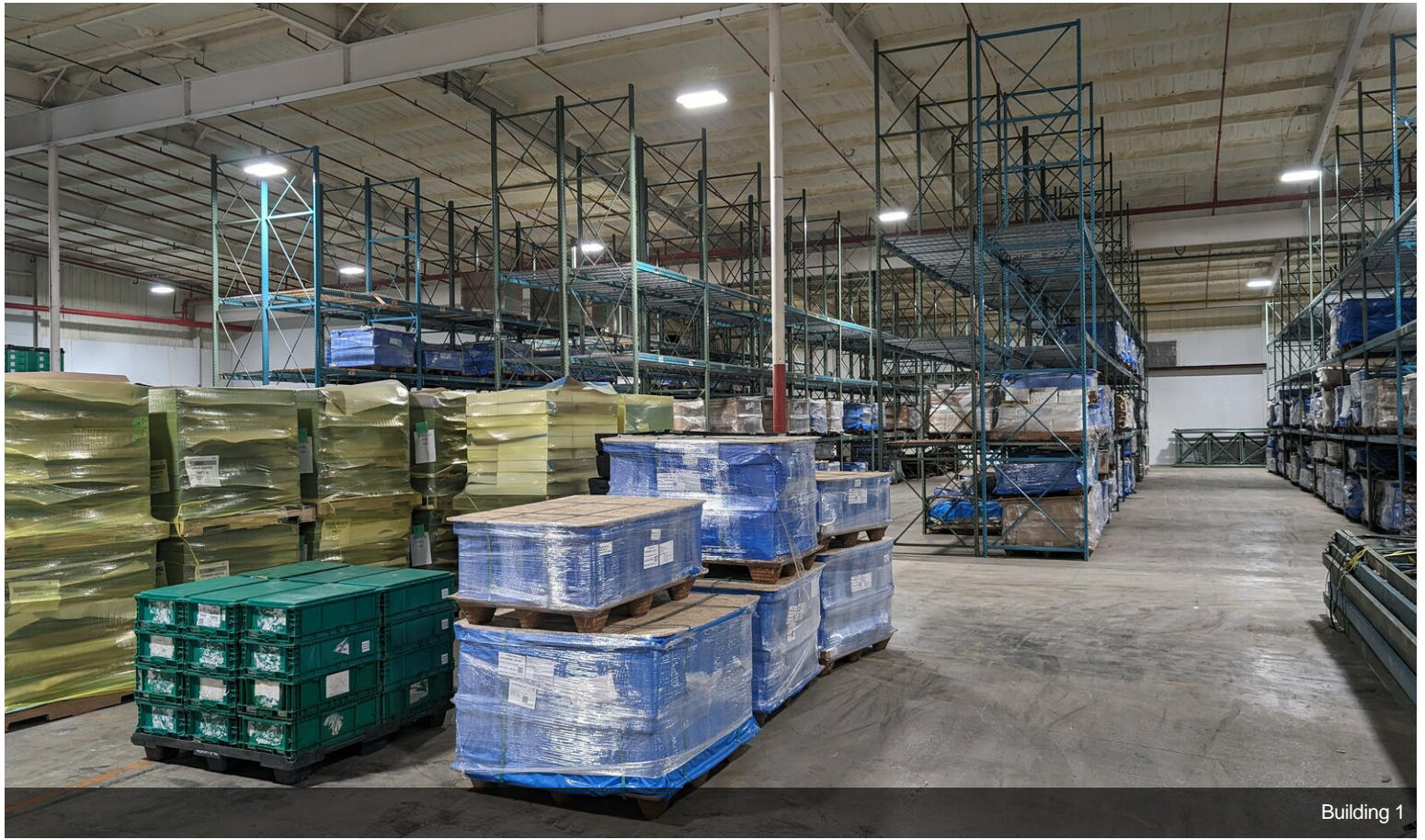
We are interested in partnering with business that need either short-term or long-term storage.

-Picking & Packing/Quality control/Kit assembly etc.

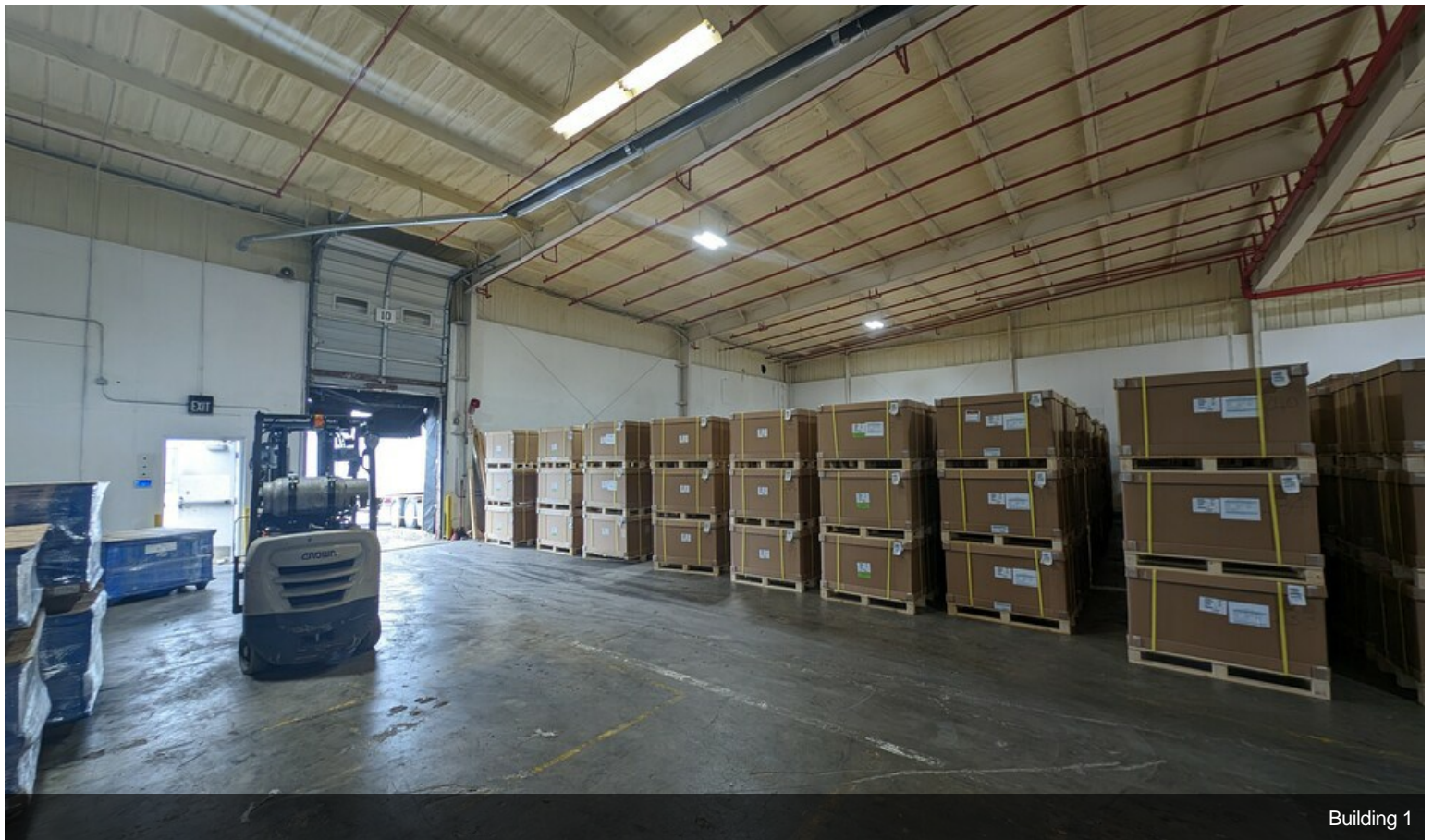
Our staff is experienced in the above hands-on projects and we manage them start to finish in house.

and Many more!

Property Photos



Building 1



Building 1

Property Photos



Property Photos



Building 2



Building 2

Property Photos



Building Photo



Building Photo

Property Photos

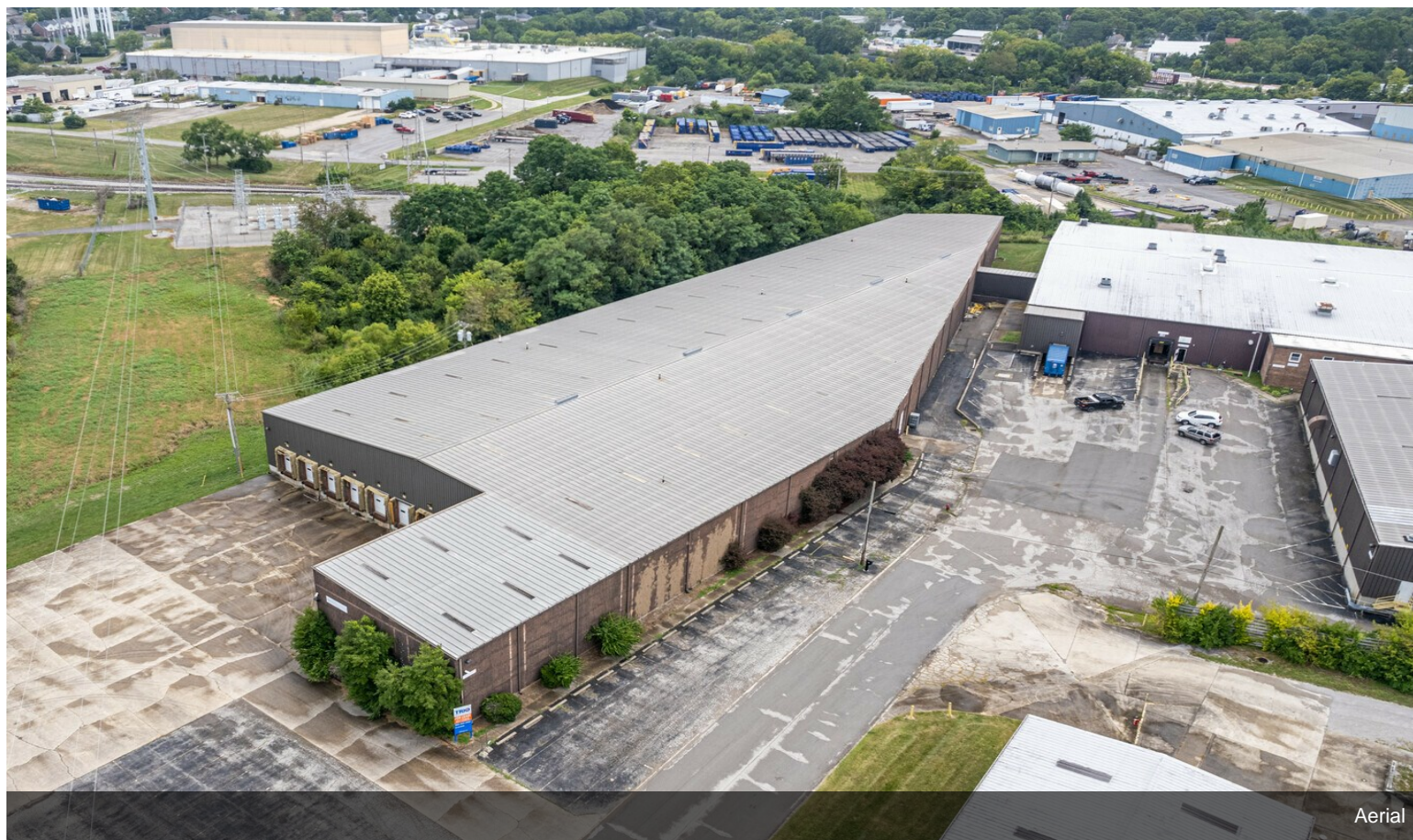


Building Photo



Building Photo

Property Photos



Aerial

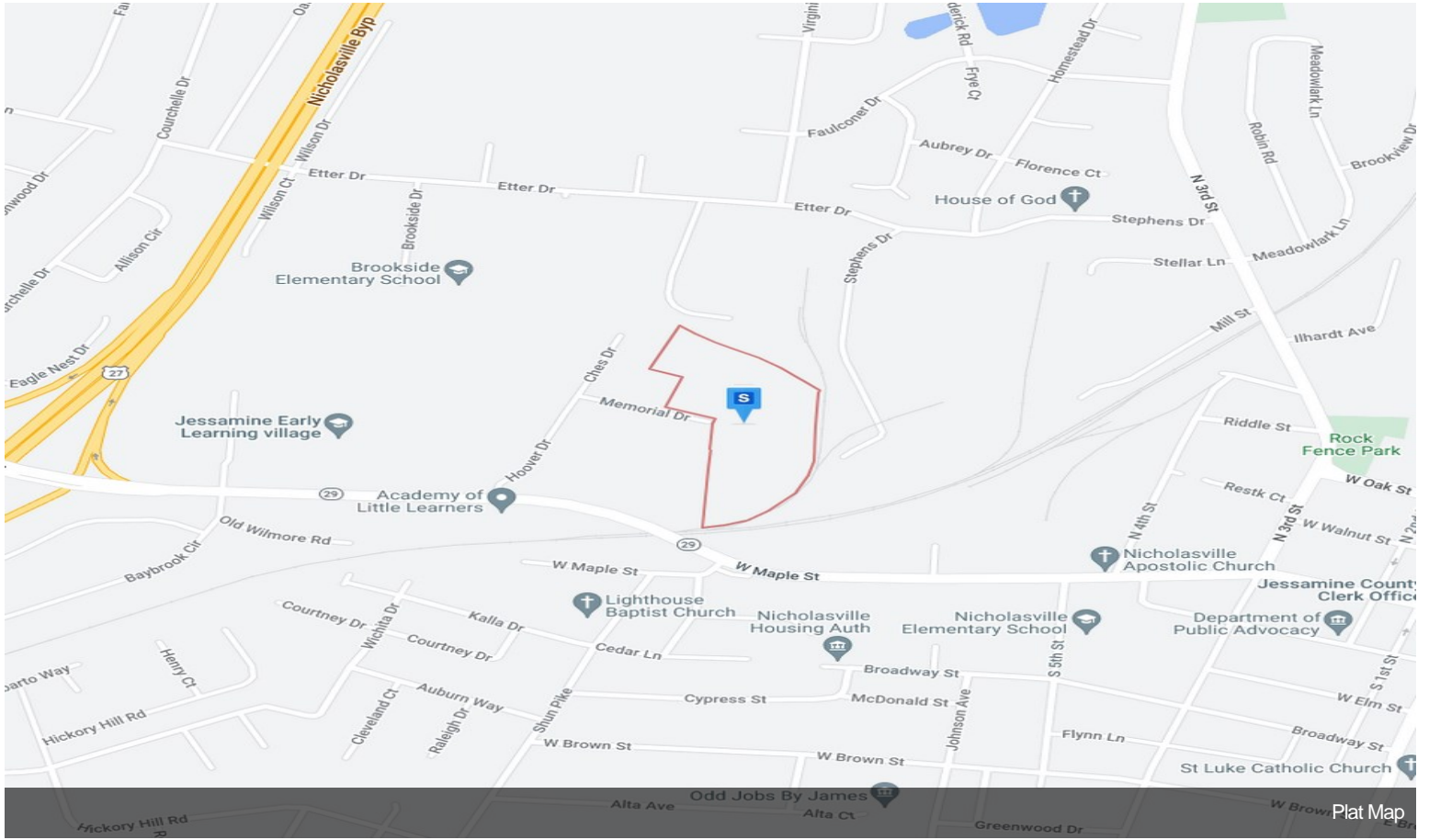


Aerial

Property Photos



Property Photos



Plat Map



Building Photo