



BYRD  
REAL ESTATE  
GROUP



**FOR SALE**

Great location in the  
Spokane Valley

CMU Zoning

Parcel # 45173.1626

**\$899,000**

**9601 E SPRAGUE  
SPOKANE VALLEY WA**

## CONTACT

US NOW



Doug Byrd 509.216.6575  
Sharon Reynolds 509.326.8080



Doug@ByrdRealEstateGroup.com  
Sharon@ByrdRealEstateGroup.com



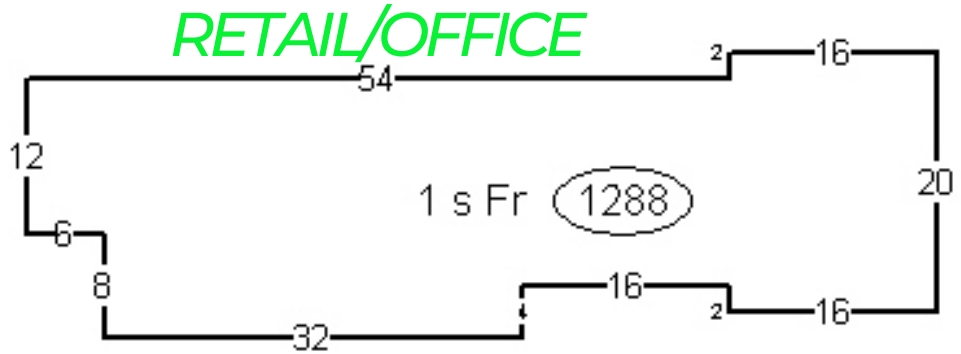
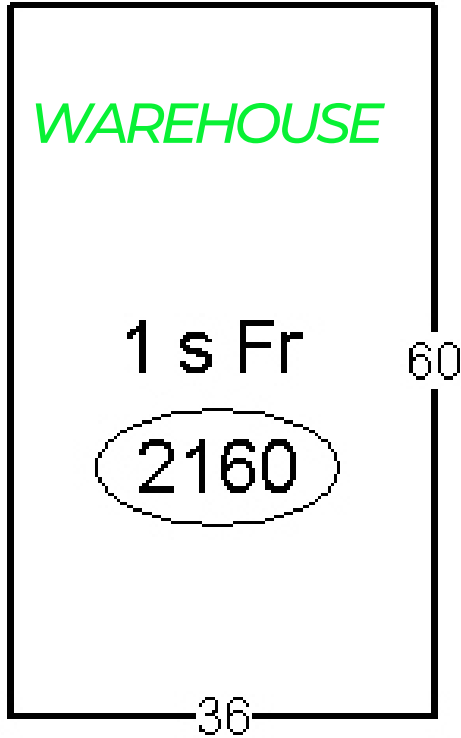
1912 N Division, Ste 201  
Spokane WA 99207

- 19,875 SF SITE
- +/- 3,448 SF BUILDINGS
  - 1,288 SF OFFICE/RETAIL
  - 2,160 SF SHOP/WHSE
- 2 OVERHEAD DOORS
- PLENTY OF ON-SITE PARKING
- SECURE YARD AREA

[www.ByrdRealEstateGroup.com](http://www.ByrdRealEstateGroup.com)

**PRODUCING PROPERTY SOLUTIONS**

All information is furnished by the Owner &/or Broker and believed to be complete and correct. The Owner &/or Broker cannot be responsible for changes, errors, omissions or withdrawals of this offering. The above information is from sources deemed reliable but should be verified by parties that could be adversely affected by any statements or information. This is not an offering of sub-agency, with commission splits to be determined.



## CONTACT

US NOW



Doug Byrd  
509.216.6575  
Sharon Reynolds  
509.326.8080



Doug@ByrdRealEstateGroup.com



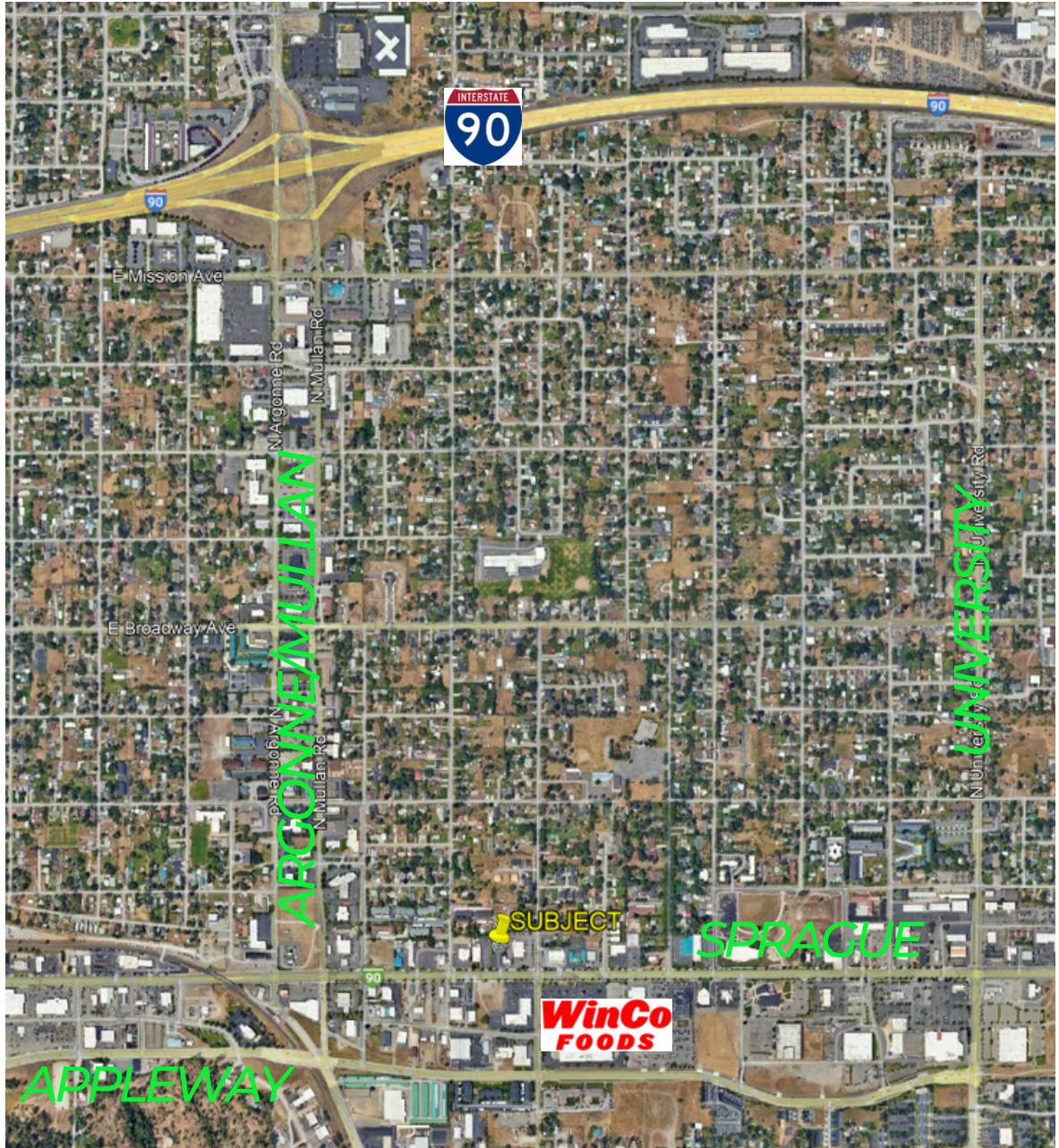
1912 N Division, Ste 201  
Spokane WA 99207





BYRD  
REAL ESTATE  
GROUP

# 9601 E SPRAGUE



**CONTACT**  
US NOW



Doug Byrd 509.216.6575  
Sharon Reynolds 509.326.8080



Doug@ByrdRealEstateGroup.com  
Sharon@ByrdRealEstateGroup.com



1912 N Division, Ste 201  
Spokane WA 99207

[www.ByrdRealEstateGroup.com](http://www.ByrdRealEstateGroup.com)

**PRODUCING PROPERTY SOLUTIONS**

All information is furnished by the Owner &/or Broker and believed to be complete and correct. The Owner &/or Broker cannot be responsible for changes, errors, omissions or withdrawals of this offering. The above information is from sources deemed reliable but should be verified by parties that could be adversely affected by any statements or information. This is not an offering of sub-agency, with commission splits to be determined.