

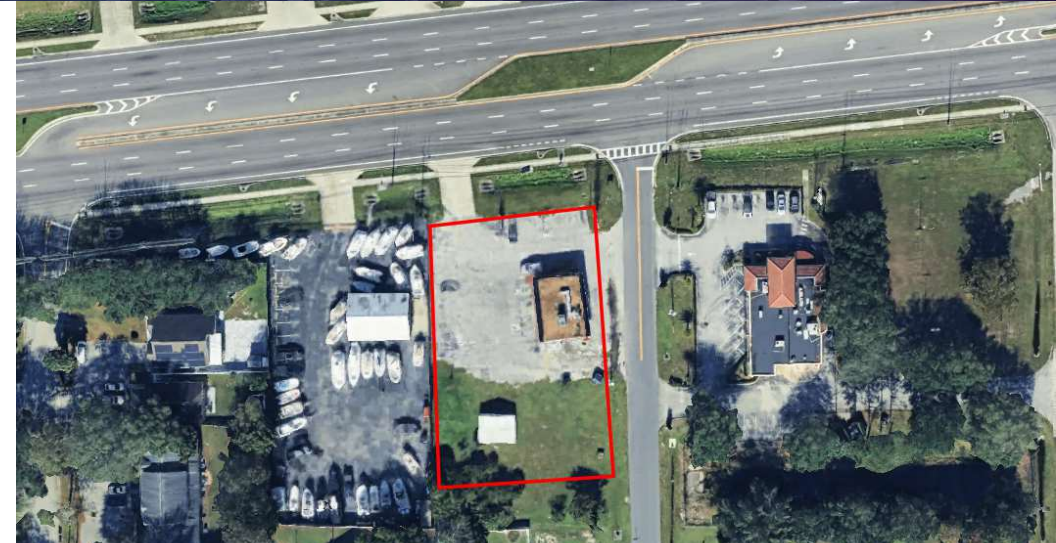
Rare Redevelopment Site

9710 East Colonial Drive, Orlando, FL 32817



EQUITY
INVESTMENT
SERVICES

PROPERTY SUMMARY



PROPERTY HIGHLIGHTS

- QSR Redevelopment site with improvements in place
- 144 ft of frontage on E Colonial Drive
- 59,500+ cars per day on E Colonial Drive
- Drive-Thru in place, expected to stay with redevelopment
- Minutes away from the 417, major North/South Highway throughout Central Florida
- Dense Population and High Incomes
- Zoning C-1
- Ideal Uses: QSR, Coffee, Oil Change, and Medical

[CLICK HERE FOR SURVEY.](#)

OFFERING SUMMARY

Sale Price:	Call for pricing
Lot Size:	0.57 Acres
Building Size:	1,262 SF

DEMOGRAPHICS	1 MILE	3 MILES	5 MILES
Total Households	4,455	39,325	106,390
Total Population	12,178	112,925	299,565
Average HH Income	\$87,111	\$88,196	\$95,879

Eric Portnoy

954.242.2010

eportnoy@eisre.com

Andreas Steineger, MBA

407.360.3154

asteineger@eisre.com



7575 Dr. Phillips Blvd, Ste 390

Orlando, FL 32819

www.eisre.com

Rare Redevelopment Site

9710 East Colonial Drive, Orlando, FL 32817



EQUITY
INVESTMENT
SERVICES

RETAILER MAP



Map data ©2024 Imagery ©2024 Airbus
Maxar Technologies

Eric Portnoy

954.242.2010

eportnoy@eisre.com

Andreas Steineger, MBA

407.360.3154

asteineger@eisre.com



7575 Dr. Phillips Blvd, Ste 390

Orlando, FL 32819

www.eisre.com

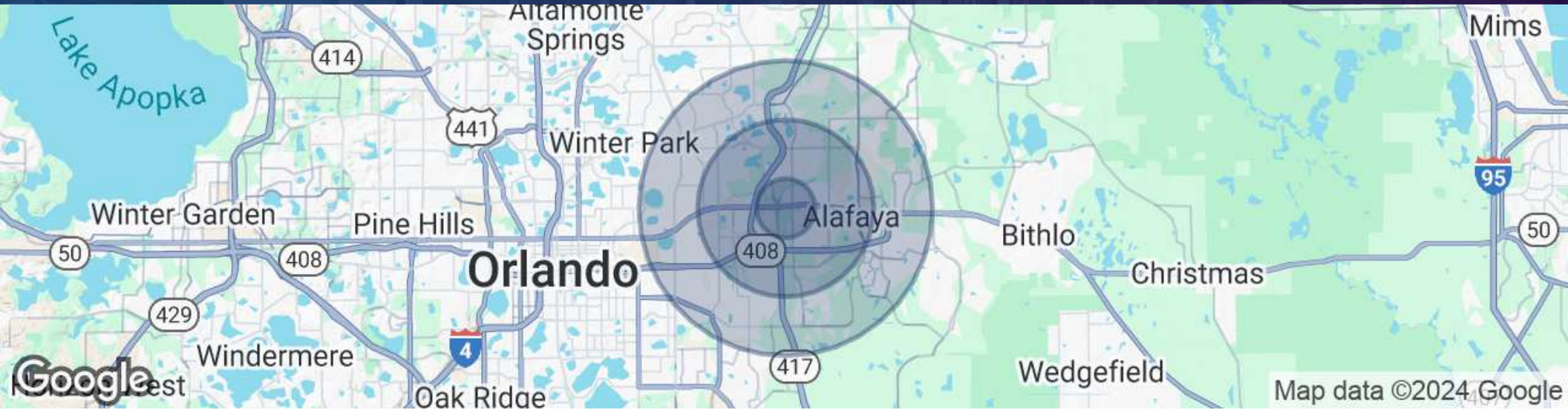
Rare Redevelopment Site

9710 East Colonial Drive, Orlando, FL 32817



EQUITY
INVESTMENT
SERVICES

DEMOGRAPHICS MAP & REPORT



POPULATION	1 MILE	3 MILES	5 MILES
Total Population	12,178	112,925	299,565
Average Age	39	36	37
Average Age (Male)	37	35	36
Average Age (Female)	40	37	38
HOUSEHOLDS & INCOME	1 MILE	3 MILES	5 MILES
Total Households	4,455	39,325	106,390
# of Persons per HH	2.71	2.65	2.60
Average HH Income	\$87,111	\$88,196	\$95,879
Average House Value	\$408,778	\$399,935	\$423,029

Eric Portnoy

954.242.2010

eportnoy@eisre.com

Andreas Steineger, MBA

407.360.3154

asteineger@eisre.com



7575 Dr. Phillips Blvd, Ste 390

Orlando, FL 32819

www.eisre.com