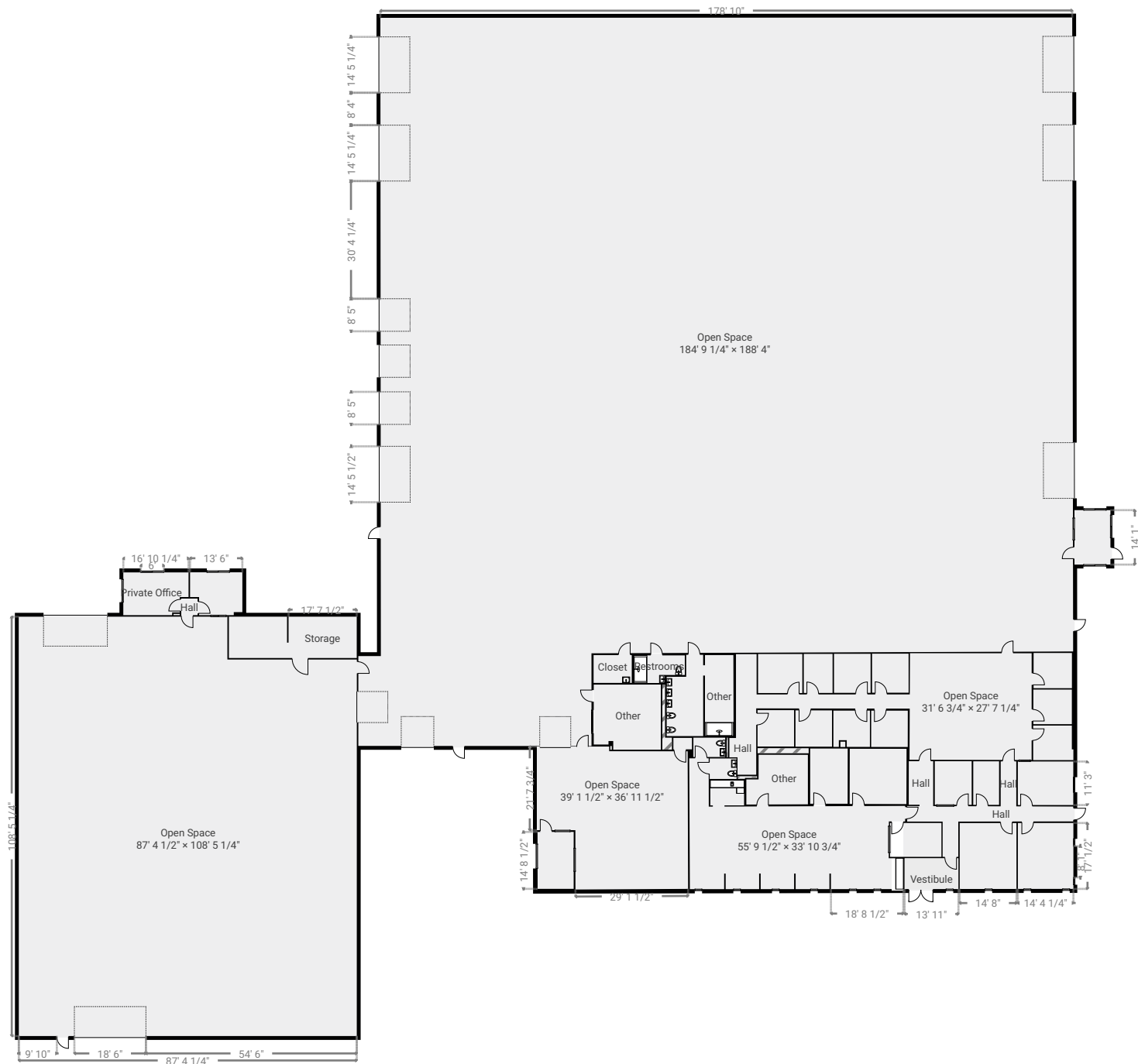


LIVING AREA: 53503.93 sq ft • FLOORS: 2

▼ Ground Floor

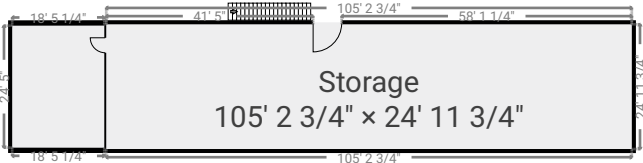
LIVING AREA: 50169.13 sq ft



LIVING AREA: 53503.93 sq ft • FLOORS: 2

▼ 2nd Floor

LIVING AREA: 3334.80 sq ft

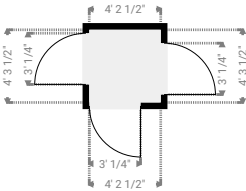
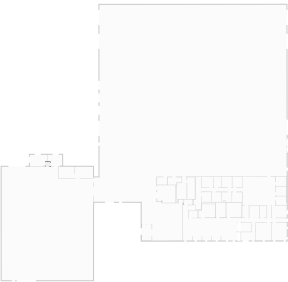


TOTAL AREA: 53462.76 sq ft • LIVING AREA: 53503.93 sq ft • FLOORS: 2

SUBMITTED BY David Hayter
davidhayterjr@yahoo.com

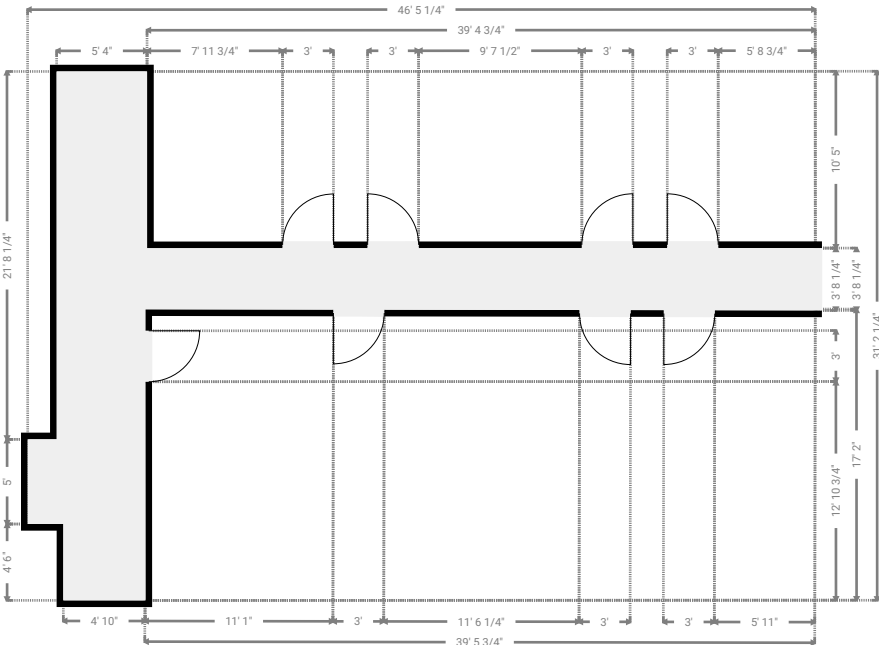
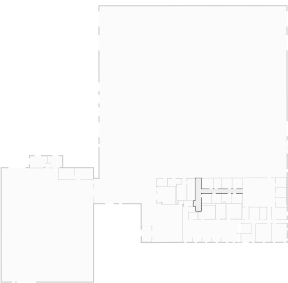
▼ Hall
Ground Floor

WIDTH: 4' 2 1/2" • LENGTH: 4' 3 1/2"
AREA: 18.06 sq ft • PERIMETER: 17'



▼ Hall
Ground Floor

WIDTH: 46' 5 1/4" • LENGTH: 31' 2 1/4"
AREA: 314.50 sq ft • PERIMETER: 155' 3 1/2"

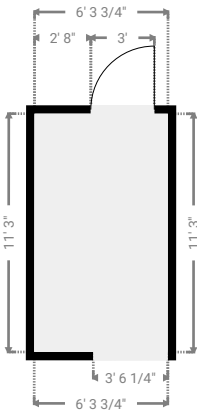
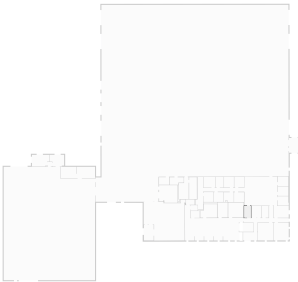


This floor plan is provided without warranty of any kind. Broken Crayon Photography, disclaims any warranty including, without limitation, satisfactory quality or accuracy of dimensions. While we do our best at being accurate, we cannot guarantee square footage calculations. While we are providing measurements and a floor plan ultimately, the real estate agent is responsible to make sure it's accurate. If you see a discrepancy, let us know immediately!

TOTAL AREA: 53462.76 sq ft • LIVING AREA: 53503.93 sq ft • FLOORS: 2

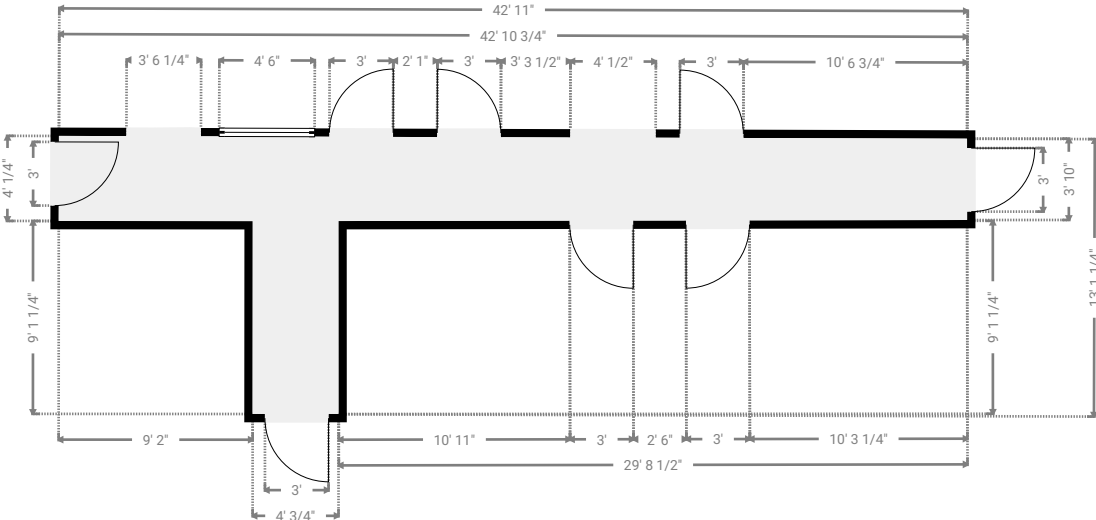
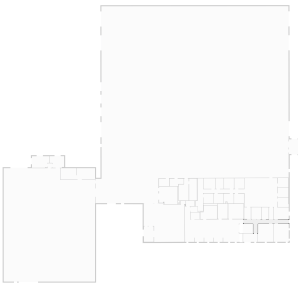
▼ Hall
Ground Floor

WIDTH: 6' 3 3/4" • LENGTH: 11' 3"
AREA: 71.02 sq ft • PERIMETER: 35' 1 1/2"



▼ Hall
Ground Floor

WIDTH: 42' 11" • LENGTH: 13' 1 1/4"
AREA: 205.91 sq ft • PERIMETER: 111' 11"

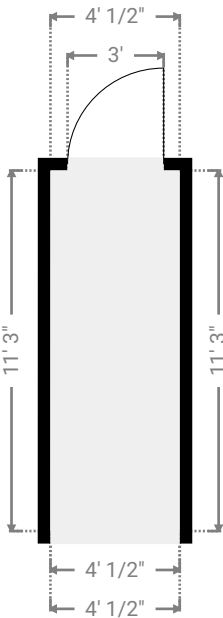
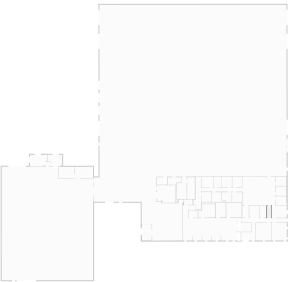


This floor plan is provided without warranty of any kind. Broken Crayon Photography, disclaims any warranty including, without limitation, satisfactory quality or accuracy of dimensions. While we do our best at being accurate, we cannot guarantee square footage calculations. While we are providing measurements and a floor plan ultimately, the real estate agent is responsible to make sure it's accurate. If you see a discrepancy, let us know immediately!

TOTAL AREA: 53462.76 sq ft • LIVING AREA: 53503.93 sq ft • FLOORS: 2

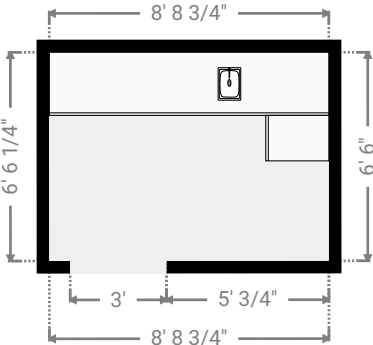
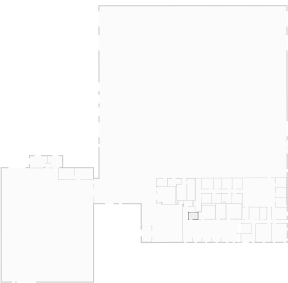
▼ Hall
Ground Floor

WIDTH: 4' 1/2" • LENGTH: 11' 3"
AREA: 45.40 sq ft • PERIMETER: 30' 6 3/4"



▼ Kitchenette
Ground Floor

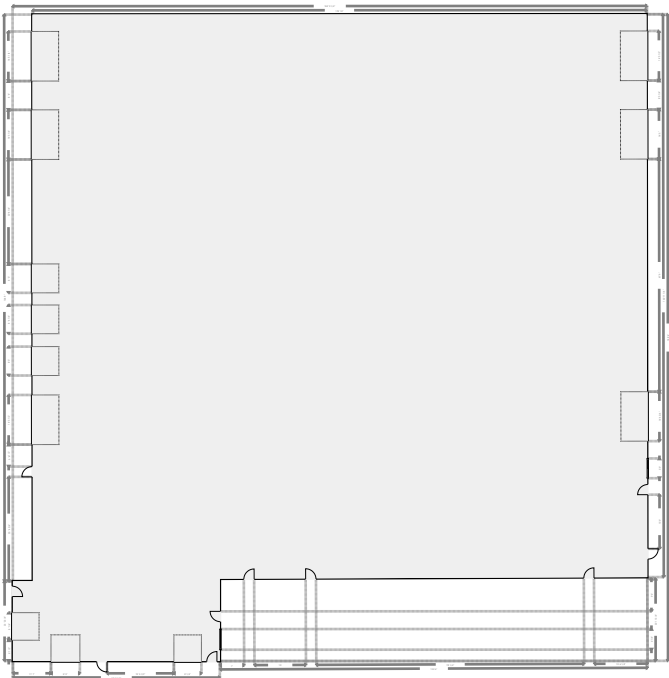
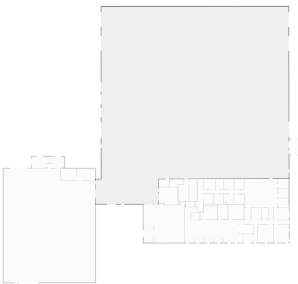
WIDTH: 8' 8 3/4" • LENGTH: 6' 6 1/4"
AREA: 56.79 sq ft • PERIMETER: 30' 5 1/2"



TOTAL AREA: 53462.76 sq ft • LIVING AREA: 53503.93 sq ft • FLOORS: 2

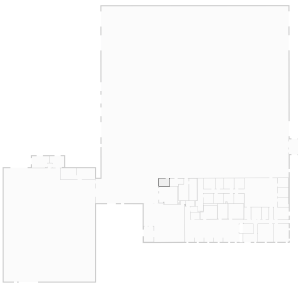
▼ Open Space
Ground Floor

WIDTH: 184' 9 1/4" • LENGTH: 188' 4"
AREA: 30811.73 sq ft • PERIMETER: 745' 7"



▼ Closet
Ground Floor

WIDTH: 9' 10 1/2" • LENGTH: 7' 2 1/4"
AREA: 70.87 sq ft • PERIMETER: 34' 1 1/4"

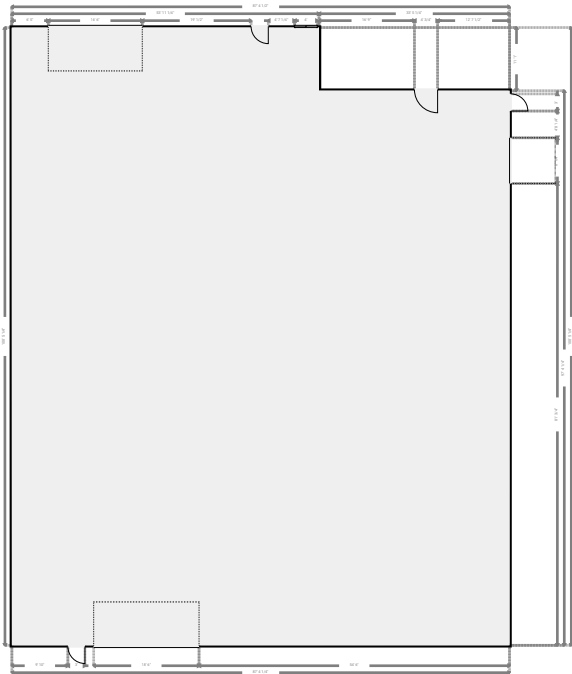
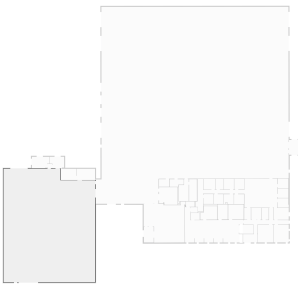


This floor plan is provided without warranty of any kind. Broken Crayon Photography, disclaims any warranty including, without limitation, satisfactory quality or accuracy of dimensions. While we do our best at being accurate, we cannot guarantee square footage calculations. While we are providing measurements and a floor plan ultimately, the real estate agent is responsible to make sure it's accurate. If you see a discrepancy, let us know immediately!

TOTAL AREA: 53462.76 sq ft • LIVING AREA: 53503.93 sq ft • FLOORS: 2

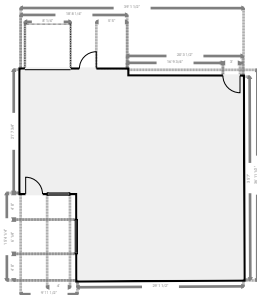
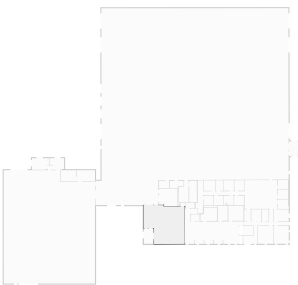
▼ Open Space
Ground Floor

WIDTH: 87' 4 1/2" • LENGTH: 108' 5 1/4"
AREA: 9102.82 sq ft • PERIMETER: 391' 7 1/4"



▼ Open Space
Ground Floor

WIDTH: 39' 1 1/2" • LENGTH: 36' 11 1/2"
AREA: 1263.09 sq ft • PERIMETER: 151' 10"

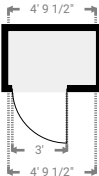
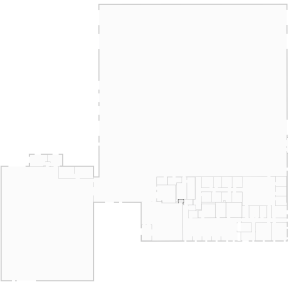


This floor plan is provided without warranty of any kind. Broken Crayon Photography, disclaims any warranty including, without limitation, satisfactory quality or accuracy of dimensions. While we do our best at being accurate, we cannot guarantee square footage calculations. While we are providing measurements and a floor plan ultimately, the real estate agent is responsible to make sure it's accurate. If you see a discrepancy, let us know immediately!

TOTAL AREA: 53462.76 sq ft • LIVING AREA: 53503.93 sq ft • FLOORS: 2

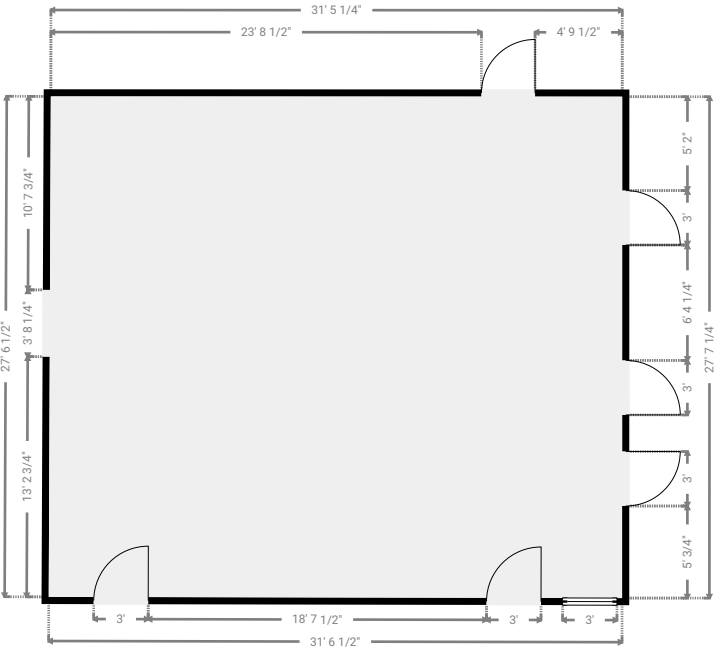
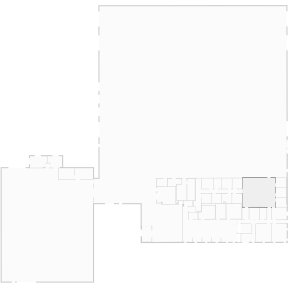
▼ Closet
Ground Floor

WIDTH: 4' 9 1/2" • LENGTH: 2' 11 1/2"
AREA: 14.20 sq ft • PERIMETER: 15' 6 1/4"



▼ Open Space
Ground Floor

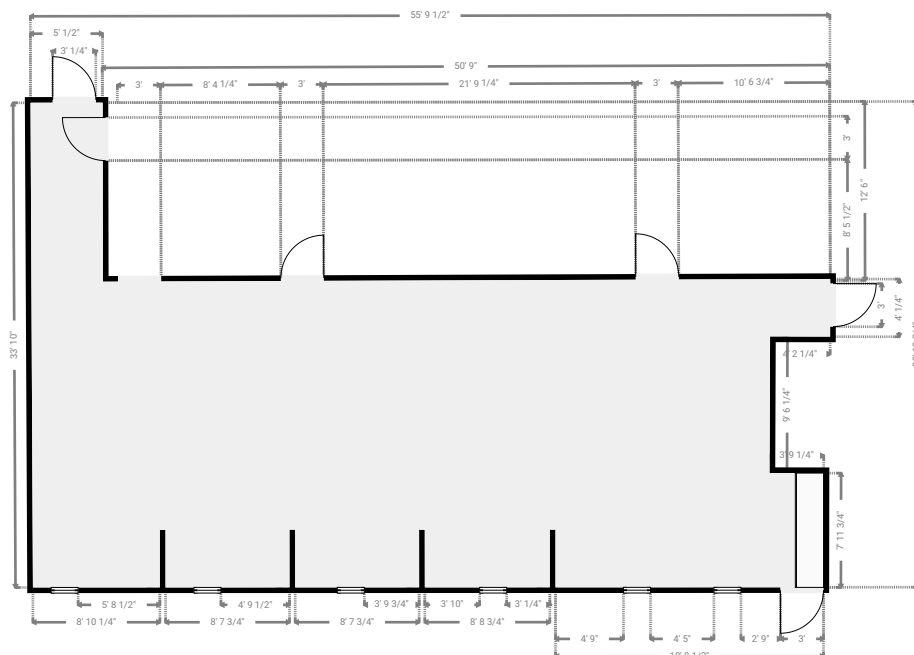
WIDTH: 31' 6 3/4" • LENGTH: 27' 7 1/4"
AREA: 868.62 sq ft • PERIMETER: 118' 1 3/4"



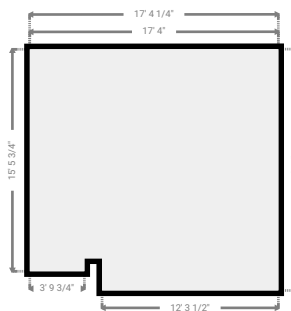
This floor plan is provided without warranty of any kind. Broken Crayon Photography, disclaims any warranty including, without limitation, satisfactory quality or accuracy of dimensions. While we do our best at being accurate, we cannot guarantee square footage calculations. While we are providing measurements and a floor plan ultimately, the real estate agent is responsible to make sure it's accurate. If you see a discrepancy, let us know immediately!

TOTAL AREA: 53462.76 sq ft • LIVING AREA: 53503.93 sq ft • FLOORS: 2

WIDTH: 55' 9 1/2" • LENGTH: 33' 10 3/4"
AREA: 1205.13 sq ft • PERIMETER: 218' 11"



WIDTH: 17' 4 1/4" • LENGTH: 16' 10"
AREA: 284.11 sq ft • PERIMETER: 70' 1 3/4"

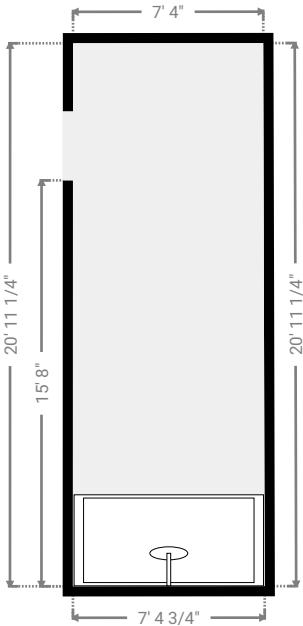
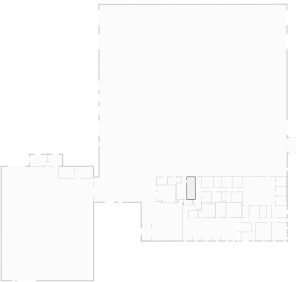


Page 8/26

TOTAL AREA: 53462.76 sq ft • LIVING AREA: 53503.93 sq ft • FLOORS: 2

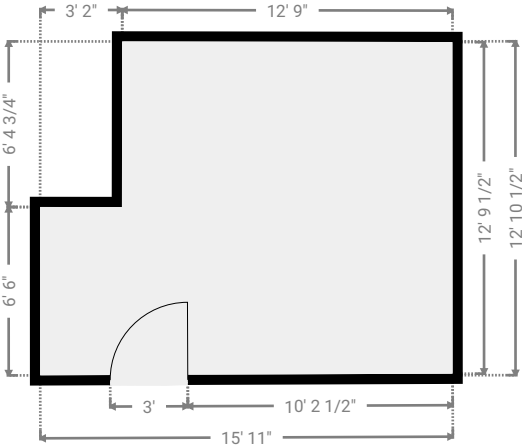
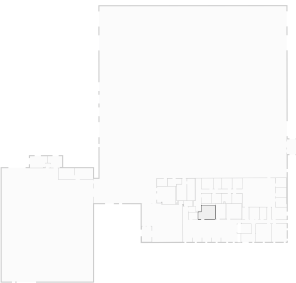
▼ Other
Ground Floor

WIDTH: 7' 4 3/4" • LENGTH: 20' 11 1/4"
AREA: 154.31 sq ft • PERIMETER: 56' 7 1/2"



▼ Other
Ground Floor

WIDTH: 15' 11" • LENGTH: 12' 10 1/2"
AREA: 184.02 sq ft • PERIMETER: 57' 5 3/4"

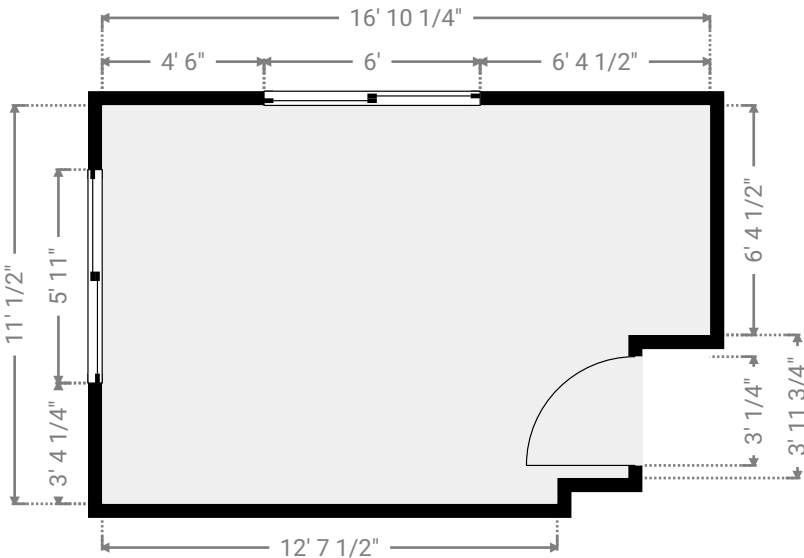
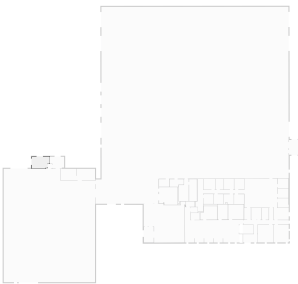


This floor plan is provided without warranty of any kind. Broken Crayon Photography, disclaims any warranty including, without limitation, satisfactory quality or accuracy of dimensions. While we do our best at being accurate, we cannot guarantee square footage calculations. While we are providing measurements and a floor plan ultimately, the real estate agent is responsible to make sure it's accurate. If you see a discrepancy, let us know immediately!

TOTAL AREA: 53462.76 sq ft • LIVING AREA: 53503.93 sq ft • FLOORS: 2

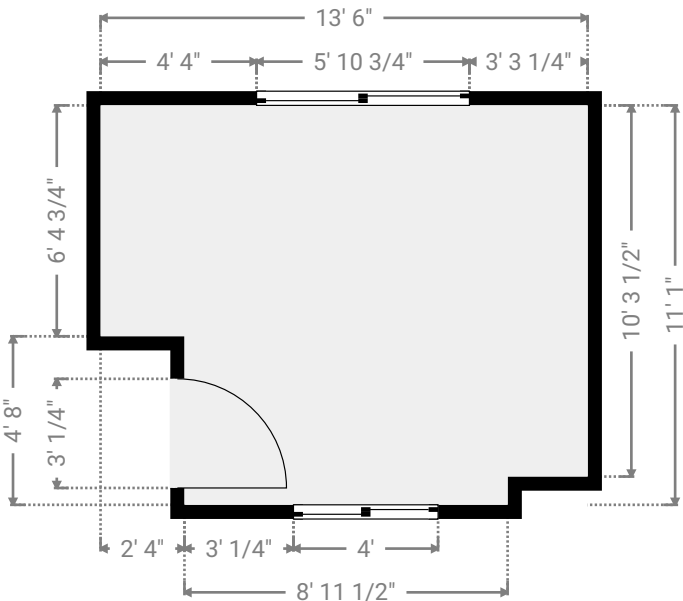
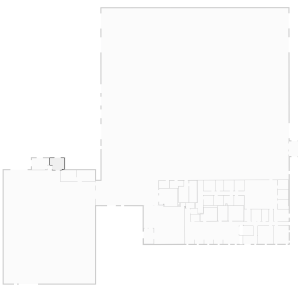
▼ Private Office
Ground Floor

WIDTH: 16' 10 1/4" • LENGTH: 11' 1/2"
AREA: 174.26 sq ft • PERIMETER: 55' 9 3/4"



▼ Private Office
Ground Floor

WIDTH: 13' 6" • LENGTH: 11' 1"
AREA: 137.07 sq ft • PERIMETER: 49' 2 1/4"



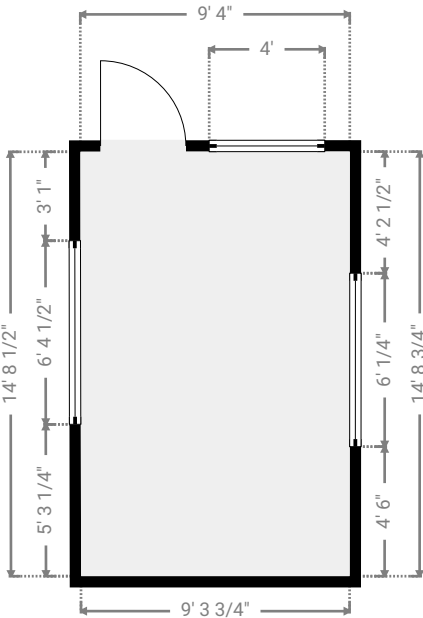
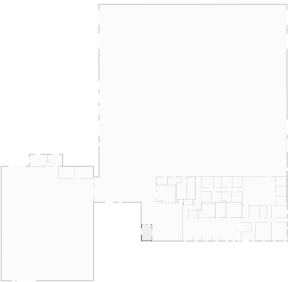
This floor plan is provided without warranty of any kind. Broken Crayon Photography, disclaims any warranty including, without limitation, satisfactory quality or accuracy of dimensions. While we do our best at being accurate, we cannot guarantee square footage calculations. While we are providing measurements and a floor plan ultimately, the real estate agent is responsible to make sure it's accurate. If you see a discrepancy, let us know immediately!

TOTAL AREA: 53462.76 sq ft • LIVING AREA: 53503.93 sq ft • FLOORS: 2

SUBMITTED BY David Hayter
davidhayterjr@yahoo.com

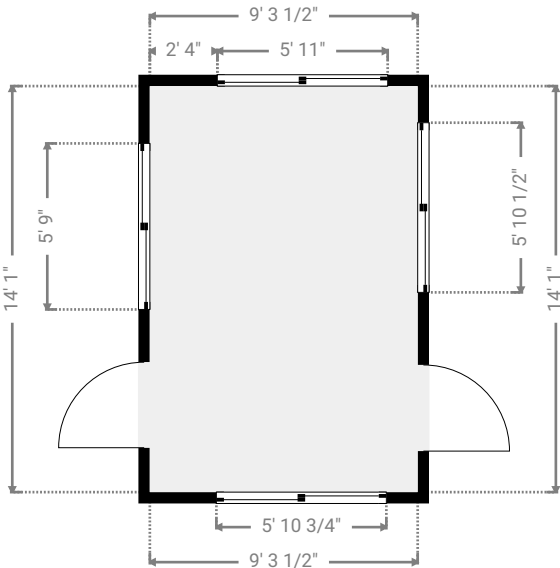
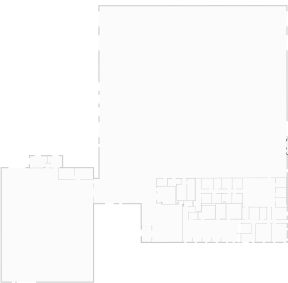
▼ Private Office
Ground Floor

WIDTH: 9' 4" • LENGTH: 14' 8 3/4"
AREA: 137.29 sq ft • PERIMETER: 48' 1"



▼ Private Office
Ground Floor

WIDTH: 9' 3 1/2" • LENGTH: 14' 1"
AREA: 130.74 sq ft • PERIMETER: 46' 8 3/4"



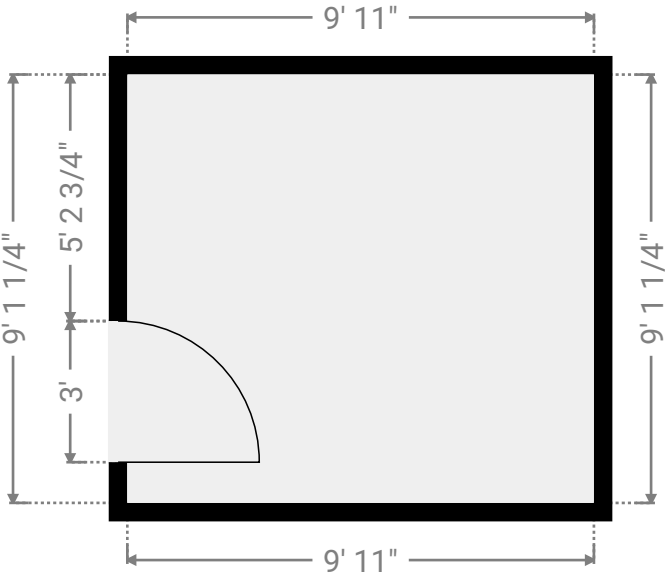
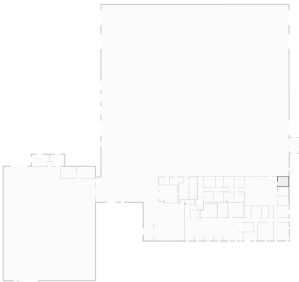
This floor plan is provided without warranty of any kind. Broken Crayon Photography, disclaims any warranty including, without limitation, satisfactory quality or accuracy of dimensions. While we do our best at being accurate, we cannot guarantee square footage calculations. While we are providing measurements and a floor plan ultimately, the real estate agent is responsible to make sure it's accurate. If you see a discrepancy, let us know immediately!

TOTAL AREA: 53462.76 sq ft • LIVING AREA: 53503.93 sq ft • FLOORS: 2

SUBMITTED BY David Hayter
davidhayterjr@yahoo.com

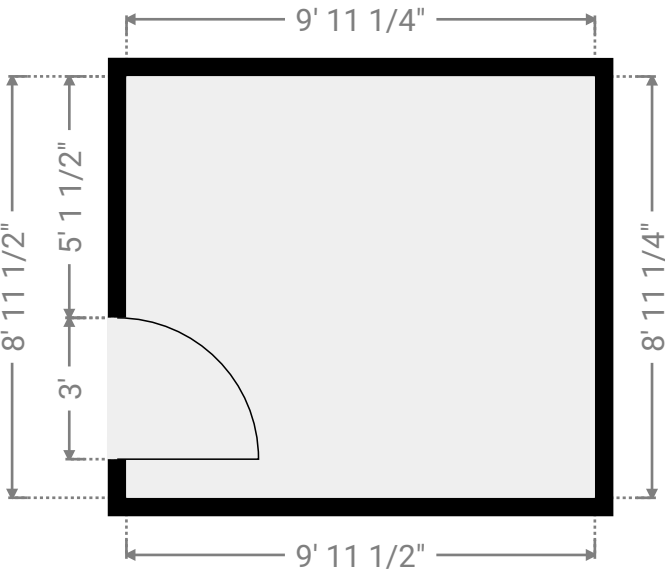
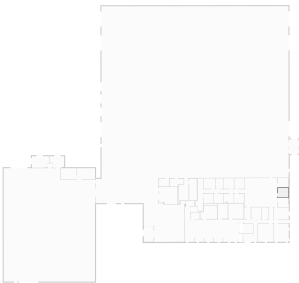
▼ Private Office
Ground Floor

WIDTH: 9' 11" • LENGTH: 9' 1 1/4"
AREA: 90.14 sq ft • PERIMETER: 38' 1/4"



▼ Private Office
Ground Floor

WIDTH: 9' 11 1/2" • LENGTH: 8' 11 1/2"
AREA: 89.01 sq ft • PERIMETER: 37' 9 1/2"



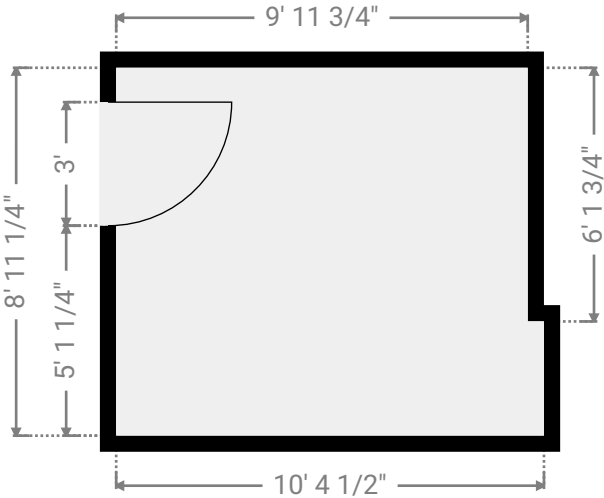
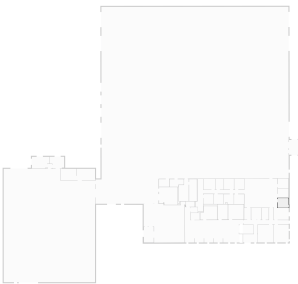
This floor plan is provided without warranty of any kind. Broken Crayon Photography, disclaims any warranty including, without limitation, satisfactory quality or accuracy of dimensions. While we do our best at being accurate, we cannot guarantee square footage calculations. While we are providing measurements and a floor plan ultimately, the real estate agent is responsible to make sure it's accurate. If you see a discrepancy, let us know immediately!

TOTAL AREA: 53462.76 sq ft • LIVING AREA: 53503.93 sq ft • FLOORS: 2

SUBMITTED BY David Hayter
davidhayterjr@yahoo.com

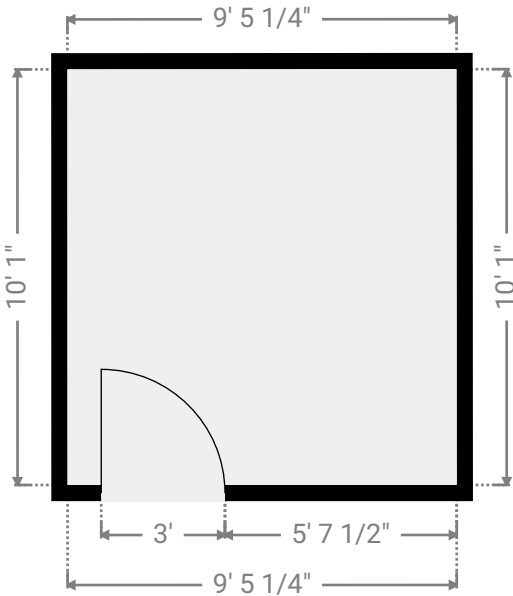
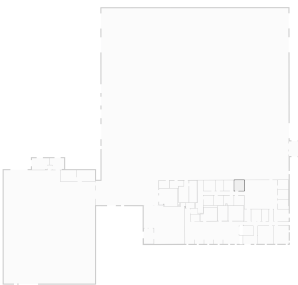
▼ Private Office
Ground Floor

WIDTH: 10' 4 1/2" • LENGTH: 8' 11 1/4"
AREA: 90.27 sq ft • PERIMETER: 38' 7 1/2"



▼ Private Office
Ground Floor

WIDTH: 9' 5 1/4" • LENGTH: 10' 1"
AREA: 95.29 sq ft • PERIMETER: 39' 3/4"

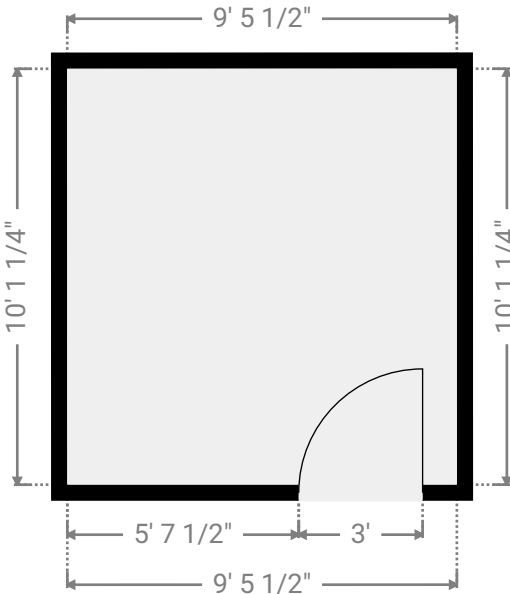
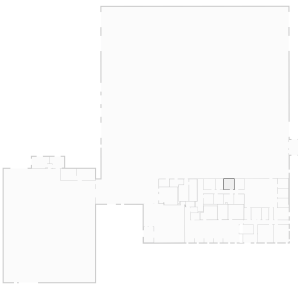


This floor plan is provided without warranty of any kind. Broken Crayon Photography, disclaims any warranty including, without limitation, satisfactory quality or accuracy of dimensions. While we do our best at being accurate, we cannot guarantee square footage calculations. While we are providing measurements and a floor plan ultimately, the real estate agent is responsible to make sure it's accurate. If you see a discrepancy, let us know immediately!

TOTAL AREA: 53462.76 sq ft • LIVING AREA: 53503.93 sq ft • FLOORS: 2

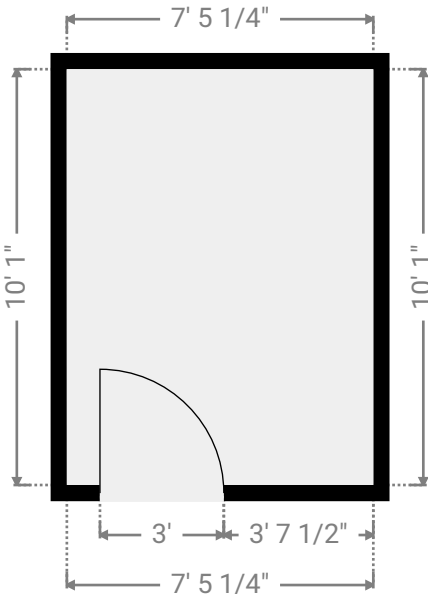
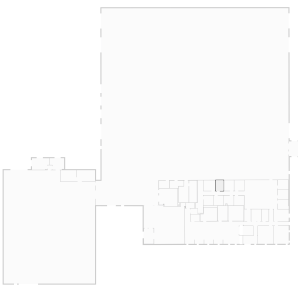
▼ Private Office
Ground Floor

WIDTH: 9' 5 1/2" • LENGTH: 10' 1 1/4"
AREA: 95.44 sq ft • PERIMETER: 39' 1 1/4"



▼ Private Office
Ground Floor

WIDTH: 7' 5 1/4" • LENGTH: 10' 1"
AREA: 75.07 sq ft • PERIMETER: 35' 3/4"



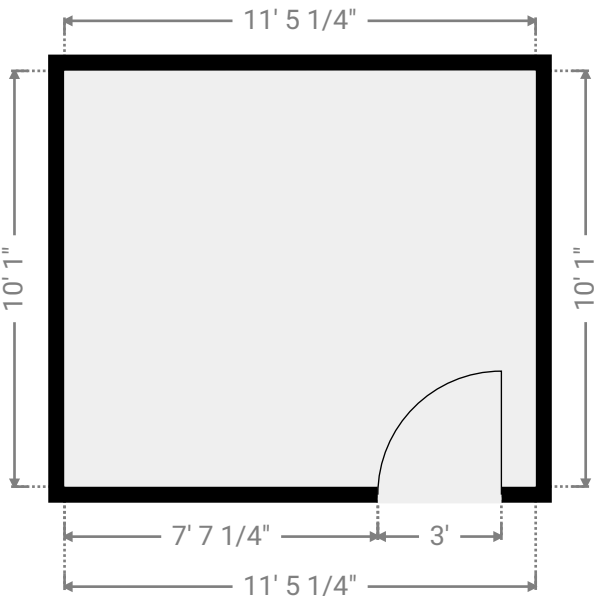
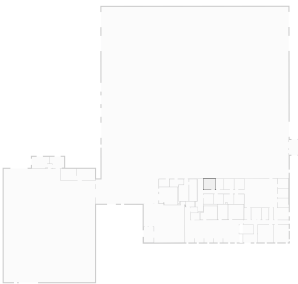
This floor plan is provided without warranty of any kind. Broken Crayon Photography, disclaims any warranty including, without limitation, satisfactory quality or accuracy of dimensions. While we do our best at being accurate, we cannot guarantee square footage calculations. While we are providing measurements and a floor plan ultimately, the real estate agent is responsible to make sure it's accurate. If you see a discrepancy, let us know immediately!

TOTAL AREA: 53462.76 sq ft • LIVING AREA: 53503.93 sq ft • FLOORS: 2

SUBMITTED BY David Hayter
davidhayterjr@yahoo.com

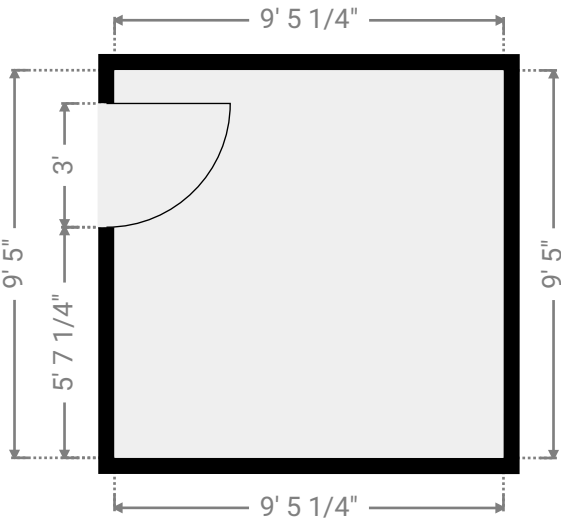
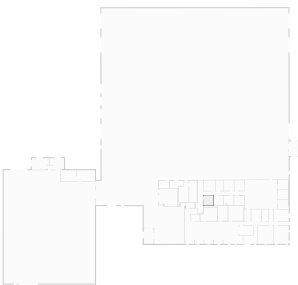
▼ Private Office
Ground Floor

WIDTH: 11' 5 1/4" • LENGTH: 10' 1"
AREA: 115.38 sq ft • PERIMETER: 43' 1/2"



▼ Private Office
Ground Floor

WIDTH: 9' 5 1/4" • LENGTH: 9' 5"
AREA: 88.81 sq ft • PERIMETER: 37' 8 1/4"



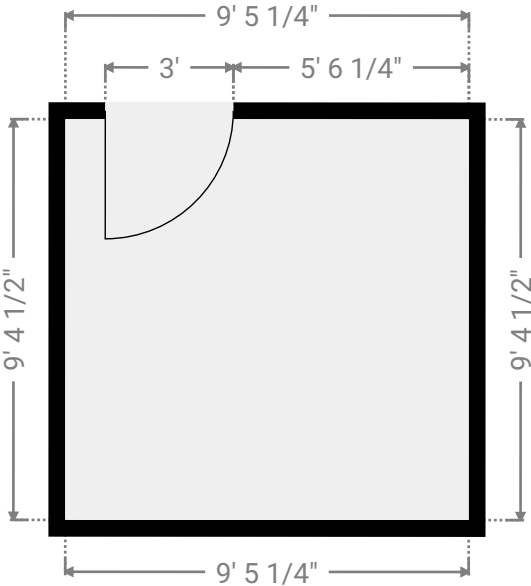
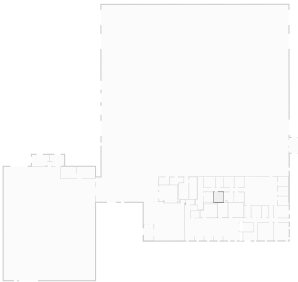
This floor plan is provided without warranty of any kind. Broken Crayon Photography, disclaims any warranty including, without limitation, satisfactory quality or accuracy of dimensions. While we do our best at being accurate, we cannot guarantee square footage calculations. While we are providing measurements and a floor plan ultimately, the real estate agent is responsible to make sure it's accurate. If you see a discrepancy, let us know immediately!

TOTAL AREA: 53462.76 sq ft • LIVING AREA: 53503.93 sq ft • FLOORS: 2

SUBMITTED BY David Hayter
davidhayterjr@yahoo.com

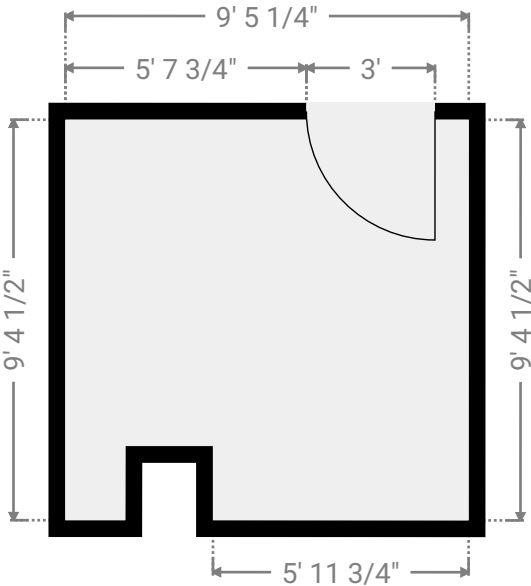
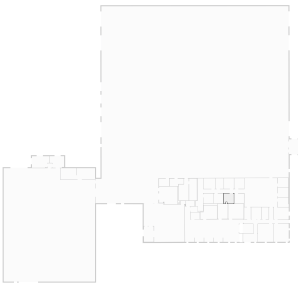
▼ Private Office
Ground Floor

WIDTH: 9' 5 1/4" • LENGTH: 9' 4 1/2"
AREA: 88.56 sq ft • PERIMETER: 37' 7 3/4"



▼ Private Office
Ground Floor

WIDTH: 9' 5 1/4" • LENGTH: 9' 4 1/2"
AREA: 84.93 sq ft • PERIMETER: 41' 1 1/4"



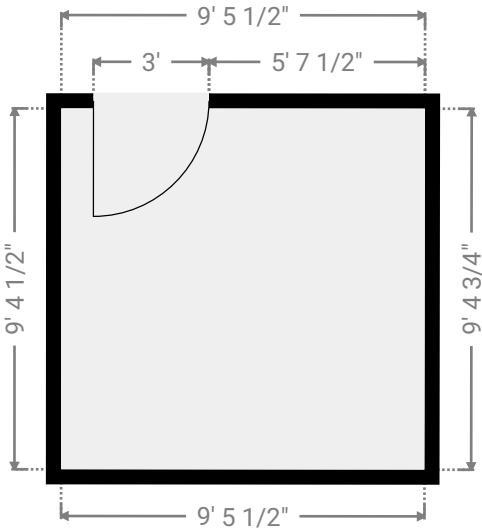
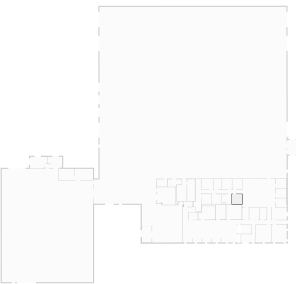
This floor plan is provided without warranty of any kind. Broken Crayon Photography, disclaims any warranty including, without limitation, satisfactory quality or accuracy of dimensions. While we do our best at being accurate, we cannot guarantee square footage calculations. While we are providing measurements and a floor plan ultimately, the real estate agent is responsible to make sure it's accurate. If you see a discrepancy, let us know immediately!

TOTAL AREA: 53462.76 sq ft • LIVING AREA: 53503.93 sq ft • FLOORS: 2

SUBMITTED BY David Hayter
davidhayterjr@yahoo.com

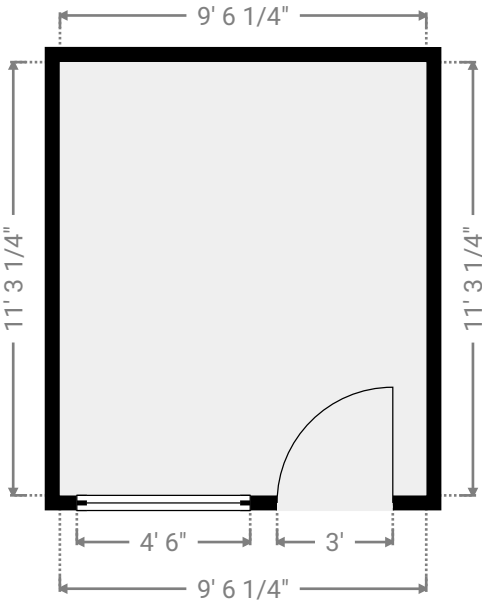
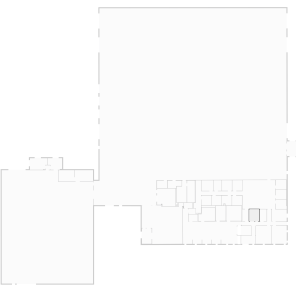
▼ Private Office
Ground Floor

WIDTH: 9' 5 1/2" • LENGTH: 9' 4 3/4"
AREA: 88.73 sq ft • PERIMETER: 37' 8 1/4"



▼ Private Office
Ground Floor

WIDTH: 9' 6 1/4" • LENGTH: 11' 3 1/4"
AREA: 107.32 sq ft • PERIMETER: 41' 7"



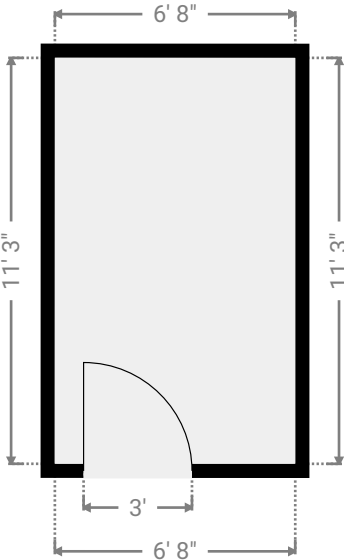
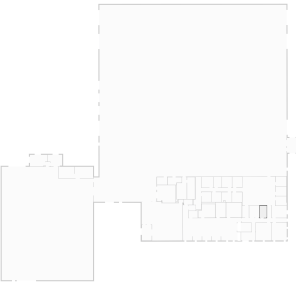
This floor plan is provided without warranty of any kind. Broken Crayon Photography, disclaims any warranty including, without limitation, satisfactory quality or accuracy of dimensions. While we do our best at being accurate, we cannot guarantee square footage calculations. While we are providing measurements and a floor plan ultimately, the real estate agent is responsible to make sure it's accurate. If you see a discrepancy, let us know immediately!

TOTAL AREA: 53462.76 sq ft • LIVING AREA: 53503.93 sq ft • FLOORS: 2

SUBMITTED BY David Hayter
davidhayterjr@yahoo.com

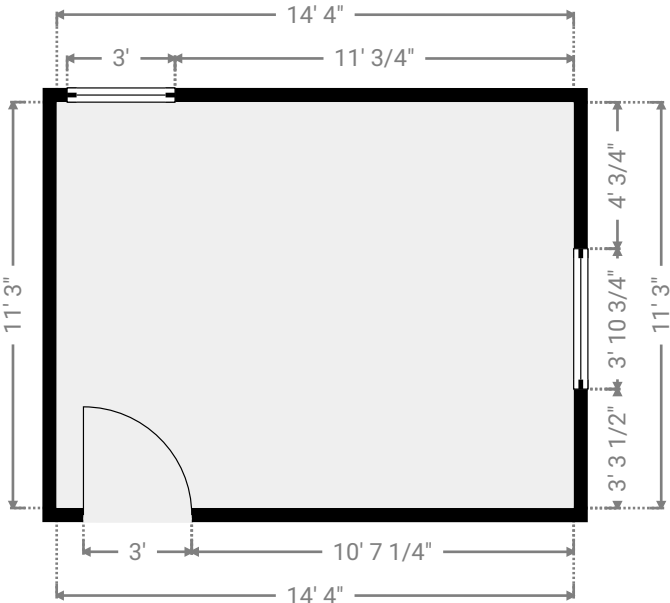
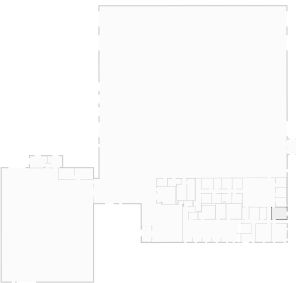
▼ Private Office
Ground Floor

WIDTH: 6' 8" • LENGTH: 11' 3"
AREA: 75.08 sq ft • PERIMETER: 35' 10 1/4"



▼ Private Office
Ground Floor

WIDTH: 14' 4" • LENGTH: 11' 3"
AREA: 161.41 sq ft • PERIMETER: 51' 2 1/4"

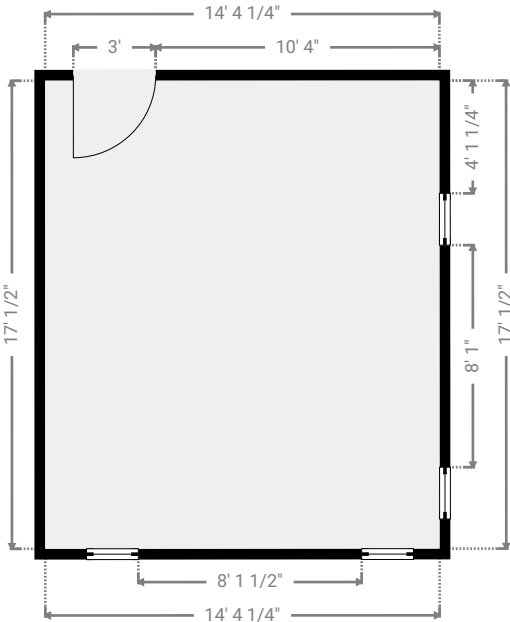
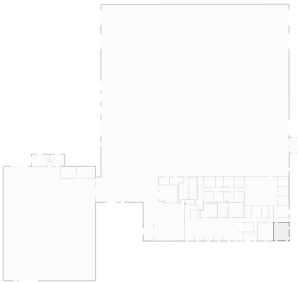


This floor plan is provided without warranty of any kind. Broken Crayon Photography, disclaims any warranty including, without limitation, satisfactory quality or accuracy of dimensions. While we do our best at being accurate, we cannot guarantee square footage calculations. While we are providing measurements and a floor plan ultimately, the real estate agent is responsible to make sure it's accurate. If you see a discrepancy, let us know immediately!

TOTAL AREA: 53462.76 sq ft • LIVING AREA: 53503.93 sq ft • FLOORS: 2

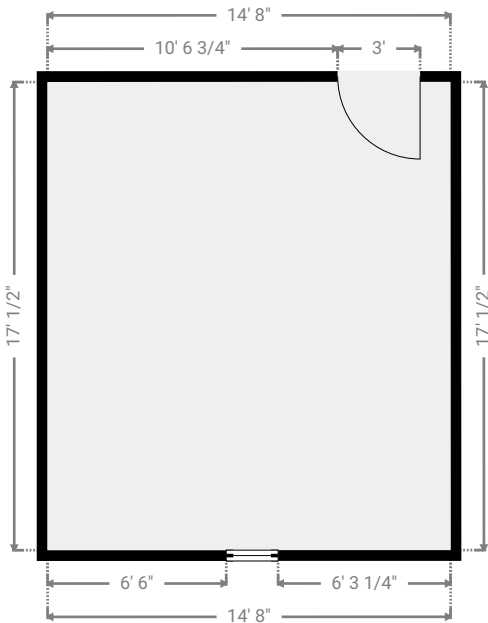
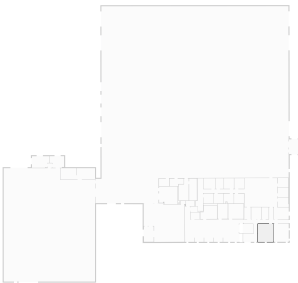
▼ Private Office
Ground Floor

WIDTH: 14' 4 1/4" • LENGTH: 17' 1/2"
AREA: 244.55 sq ft • PERIMETER: 62' 9 1/2"



▼ Private Office
Ground Floor

WIDTH: 14' 8" • LENGTH: 17' 1/2"
AREA: 250.00 sq ft • PERIMETER: 63' 5"



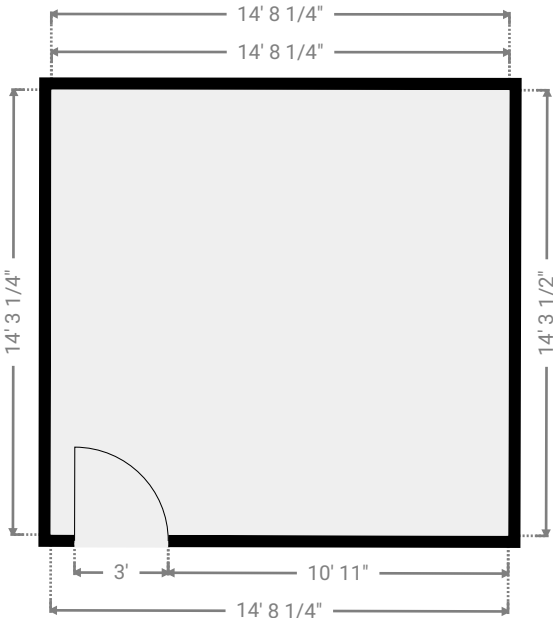
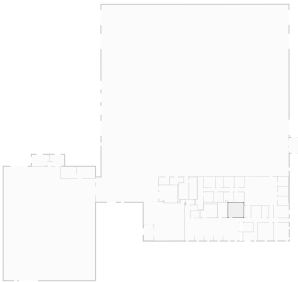
This floor plan is provided without warranty of any kind. Broken Crayon Photography, disclaims any warranty including, without limitation, satisfactory quality or accuracy of dimensions. While we do our best at being accurate, we cannot guarantee square footage calculations. While we are providing measurements and a floor plan ultimately, the real estate agent is responsible to make sure it's accurate. If you see a discrepancy, let us know immediately!

TOTAL AREA: 53462.76 sq ft • LIVING AREA: 53503.93 sq ft • FLOORS: 2

SUBMITTED BY David Hayter
davidhayterjr@yahoo.com

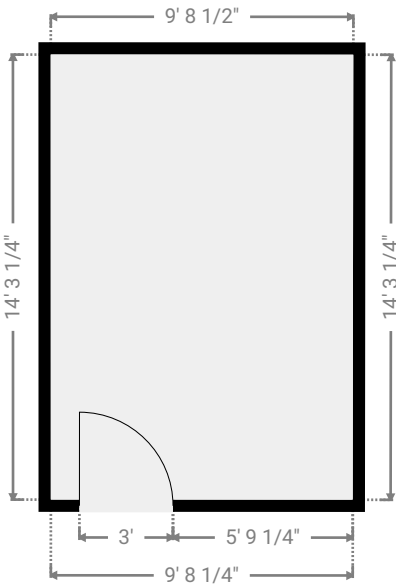
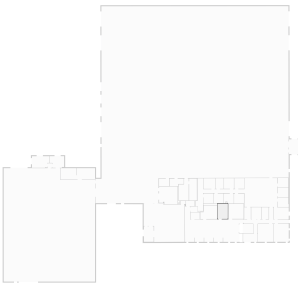
▼ Private Office
Ground Floor

WIDTH: 14' 8 1/4" • LENGTH: 14' 3 1/2"
AREA: 209.60 sq ft • PERIMETER: 57' 11"



▼ Private Office
Ground Floor

WIDTH: 9' 8 1/2" • LENGTH: 14' 3 1/4"
AREA: 138.36 sq ft • PERIMETER: 47' 11 1/4"

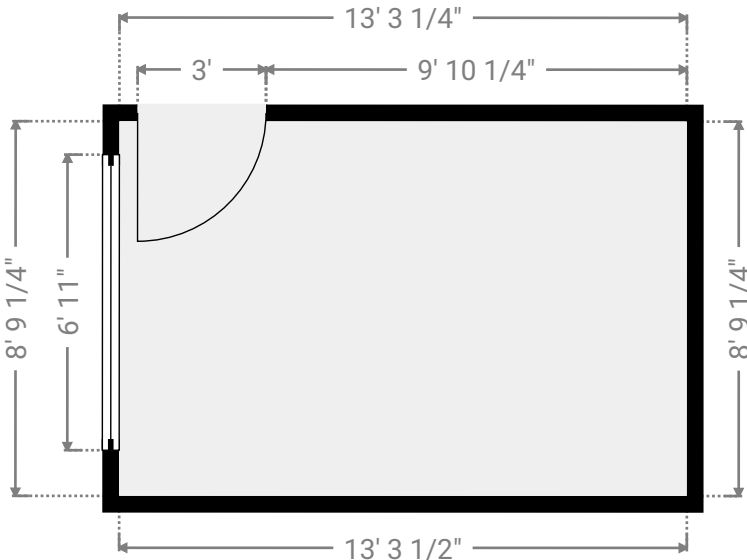
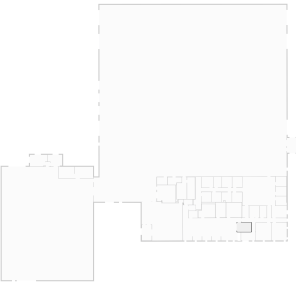


This floor plan is provided without warranty of any kind. Broken Crayon Photography, disclaims any warranty including, without limitation, satisfactory quality or accuracy of dimensions. While we do our best at being accurate, we cannot guarantee square footage calculations. While we are providing measurements and a floor plan ultimately, the real estate agent is responsible to make sure it's accurate. If you see a discrepancy, let us know immediately!

TOTAL AREA: 53462.76 sq ft • LIVING AREA: 53503.93 sq ft • FLOORS: 2

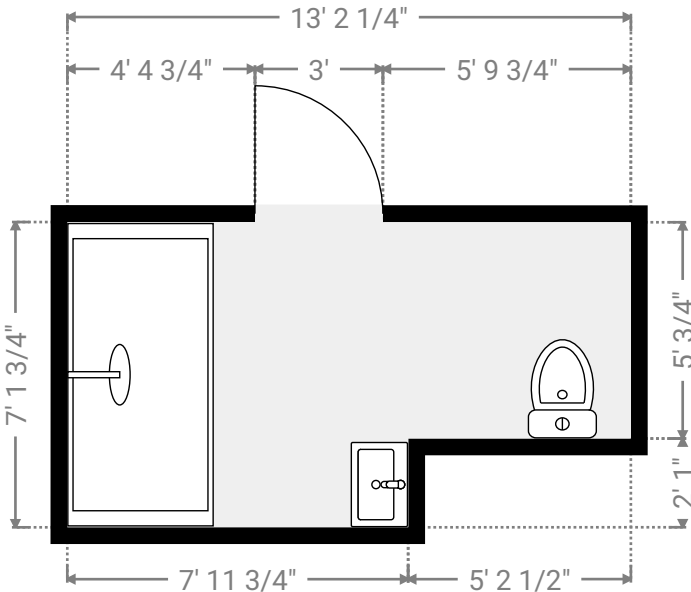
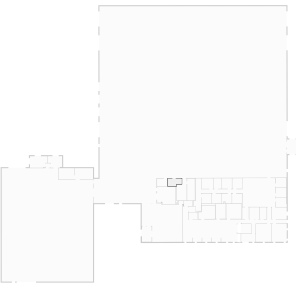
▼ Private Office
Ground Floor

WIDTH: 13' 3 1/2" • LENGTH: 8' 9 1/4"
AREA: 116.44 sq ft • PERIMETER: 44' 1 1/4"



▼ Restrooms
Ground Floor

WIDTH: 13' 2 1/4" • LENGTH: 7' 1 3/4"
AREA: 83.36 sq ft • PERIMETER: 40' 8"



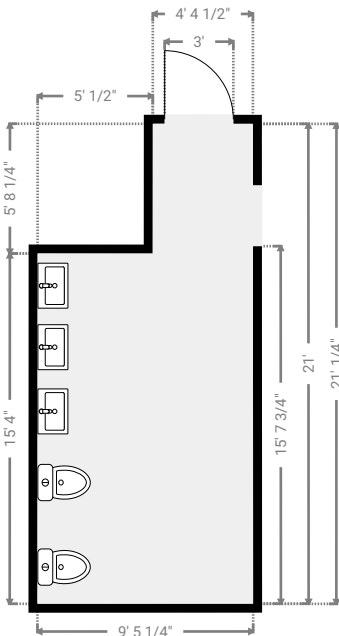
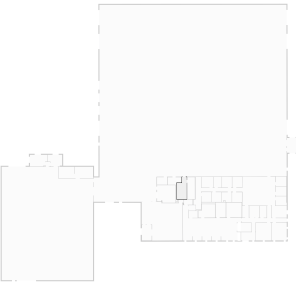
This floor plan is provided without warranty of any kind. Broken Crayon Photography, disclaims any warranty including, without limitation, satisfactory quality or accuracy of dimensions. While we do our best at being accurate, we cannot guarantee square footage calculations. While we are providing measurements and a floor plan ultimately, the real estate agent is responsible to make sure it's accurate. If you see a discrepancy, let us know immediately!

TOTAL AREA: 53462.76 sq ft • LIVING AREA: 53503.93 sq ft • FLOORS: 2

SUBMITTED BY David Hayter
davidhayterjr@yahoo.com

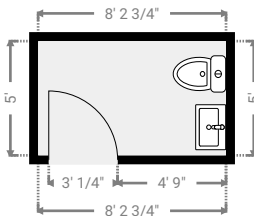
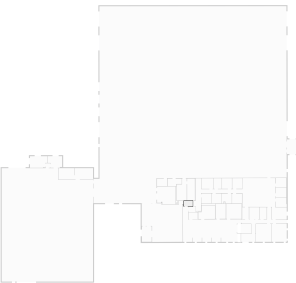
▼ Restrooms
Ground Floor

WIDTH: 9' 5 1/4" • LENGTH: 21' 1/4"
AREA: 169.54 sq ft • PERIMETER: 60' 10 1/2"



▼ Restrooms
Ground Floor

WIDTH: 8' 2 3/4" • LENGTH: 5'
AREA: 41.13 sq ft • PERIMETER: 26' 5 1/2"

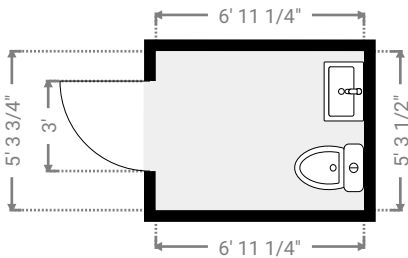
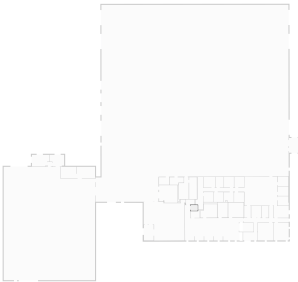


This floor plan is provided without warranty of any kind. Broken Crayon Photography, disclaims any warranty including, without limitation, satisfactory quality or accuracy of dimensions. While we do our best at being accurate, we cannot guarantee square footage calculations. While we are providing measurements and a floor plan ultimately, the real estate agent is responsible to make sure it's accurate. If you see a discrepancy, let us know immediately!

TOTAL AREA: 53462.76 sq ft • LIVING AREA: 53503.93 sq ft • FLOORS: 2

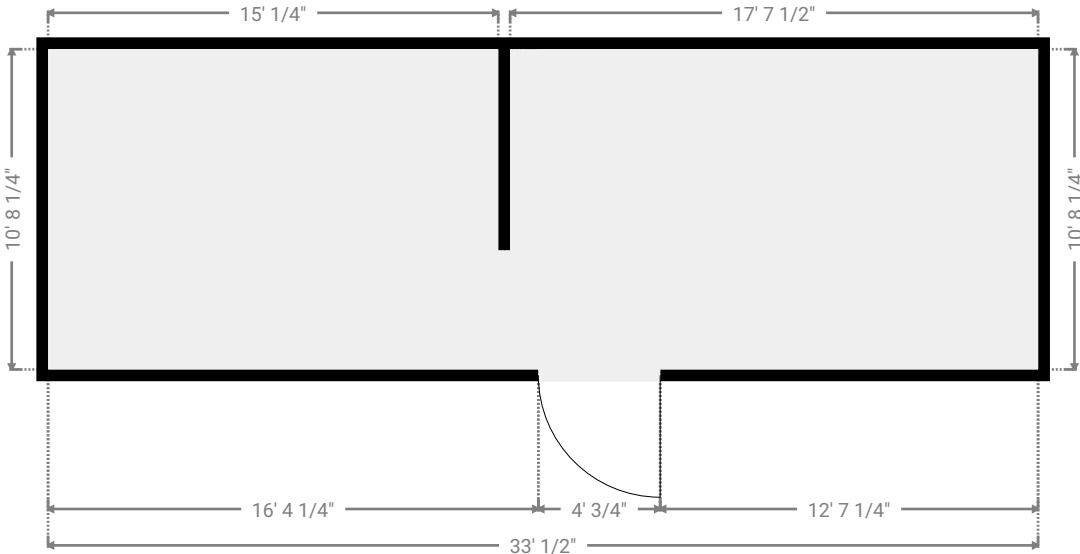
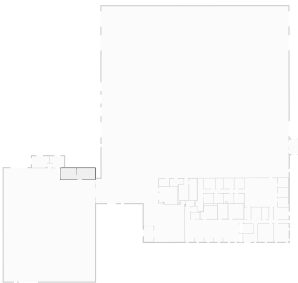
▼ Restrooms
Ground Floor

WIDTH: 6' 11 1/4" • LENGTH: 5' 3 3/4"
AREA: 36.81 sq ft • PERIMETER: 24' 5 3/4"



▼ Storage
Ground Floor

WIDTH: 33' 1/2" • LENGTH: 10' 8 1/4"
AREA: 350.43 sq ft • PERIMETER: 100' 10 1/2"



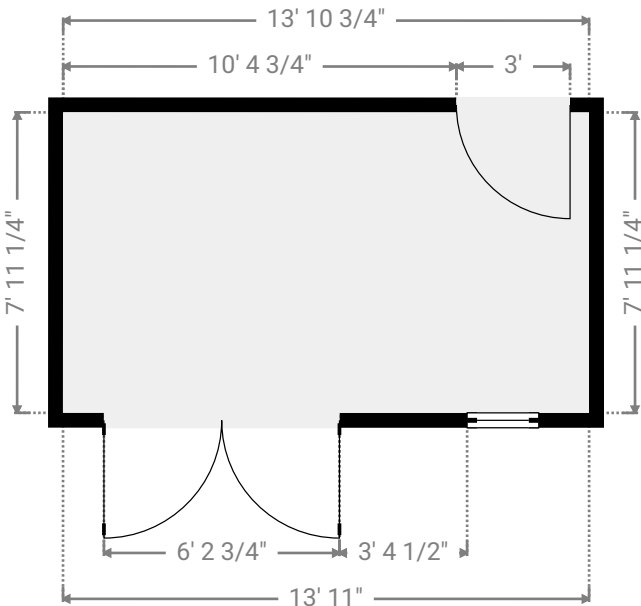
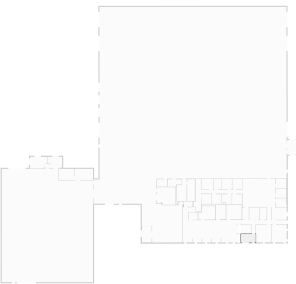
This floor plan is provided without warranty of any kind. Broken Crayon Photography, disclaims any warranty including, without limitation, satisfactory quality or accuracy of dimensions. While we do our best at being accurate, we cannot guarantee square footage calculations. While we are providing measurements and a floor plan ultimately, the real estate agent is responsible to make sure it's accurate. If you see a discrepancy, let us know immediately!

TOTAL AREA: 53462.76 sq ft • LIVING AREA: 53503.93 sq ft • FLOORS: 2

SUBMITTED BY David Hayter
davidhayterjr@yahoo.com

▼ Vestibule
Ground Floor

WIDTH: 13' 11" • LENGTH: 7' 11 1/4"
AREA: 110.46 sq ft • PERIMETER: 43' 8 1/2"

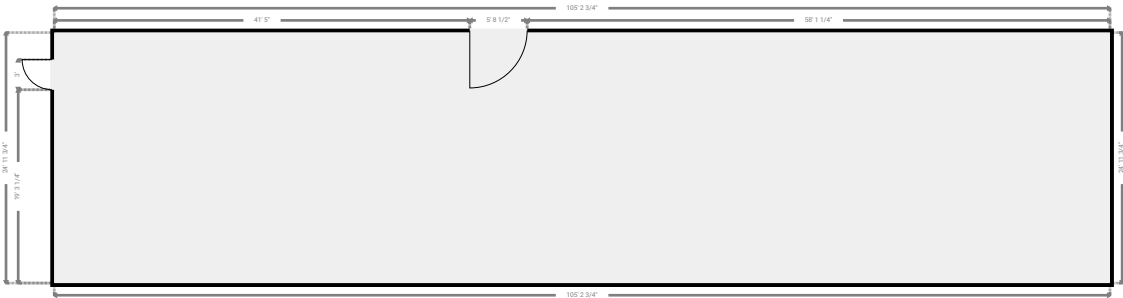


This floor plan is provided without warranty of any kind. Broken Crayon Photography, disclaims any warranty including, without limitation, satisfactory quality or accuracy of dimensions. While we do our best at being accurate, we cannot guarantee square footage calculations. While we are providing measurements and a floor plan ultimately, the real estate agent is responsible to make sure it's accurate. If you see a discrepancy, let us know immediately!

TOTAL AREA: 53462.76 sq ft • LIVING AREA: 53503.93 sq ft • FLOORS: 2

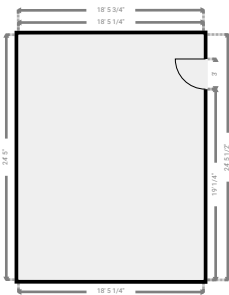
▼ Storage
2nd Floor

WIDTH: 105' 2 3/4" • LENGTH: 24' 11 3/4"
AREA: 2627.64 sq ft • PERIMETER: 260' 5"



▼ Storage
2nd Floor

WIDTH: 18' 5 3/4" • LENGTH: 24' 5 1/2"
AREA: 450.68 sq ft • PERIMETER: 85' 9"



This floor plan is provided without warranty of any kind. Broken Crayon Photography, disclaims any warranty including, without limitation, satisfactory quality or accuracy of dimensions. While we do our best at being accurate, we cannot guarantee square footage calculations. While we are providing measurements and a floor plan ultimately, the real estate agent is responsible to make sure it's accurate. If you see a discrepancy, let us know immediately!