

Office

For Sale

383 W Steamboat Dr, Ste 201 Dakota Dunes, SD 57049



For Sale

2,800 SF | \$515,000

Office



Property Description

2,800 SF office condo available in Dakota Dunes, SD. The space is currently finished as a dental office that includes a waiting room, reception area, five exam rooms, two offices, a procedure room, restrooms, and a 3,038 SF basement. The space was recently updated and has great natural light.

Location Description

Dakota Dunes, Sd

Location Information

| | |
|------------------|-----------------------------|
| Street Address | 383 W Steamboat Dr, Ste 201 |
| City, State, Zip | Dakota Dunes, SD 57049 |
| County | Union |
| Sub-market | Dakota Dunes |

Building Information

| | |
|----------------|----------|
| Building Size | 2,800 SF |
| Building Class | A |
| Occupancy % | 100.0% |
| Tenancy | Single |
| Year Built | 1999 |

Taxes & Valuation

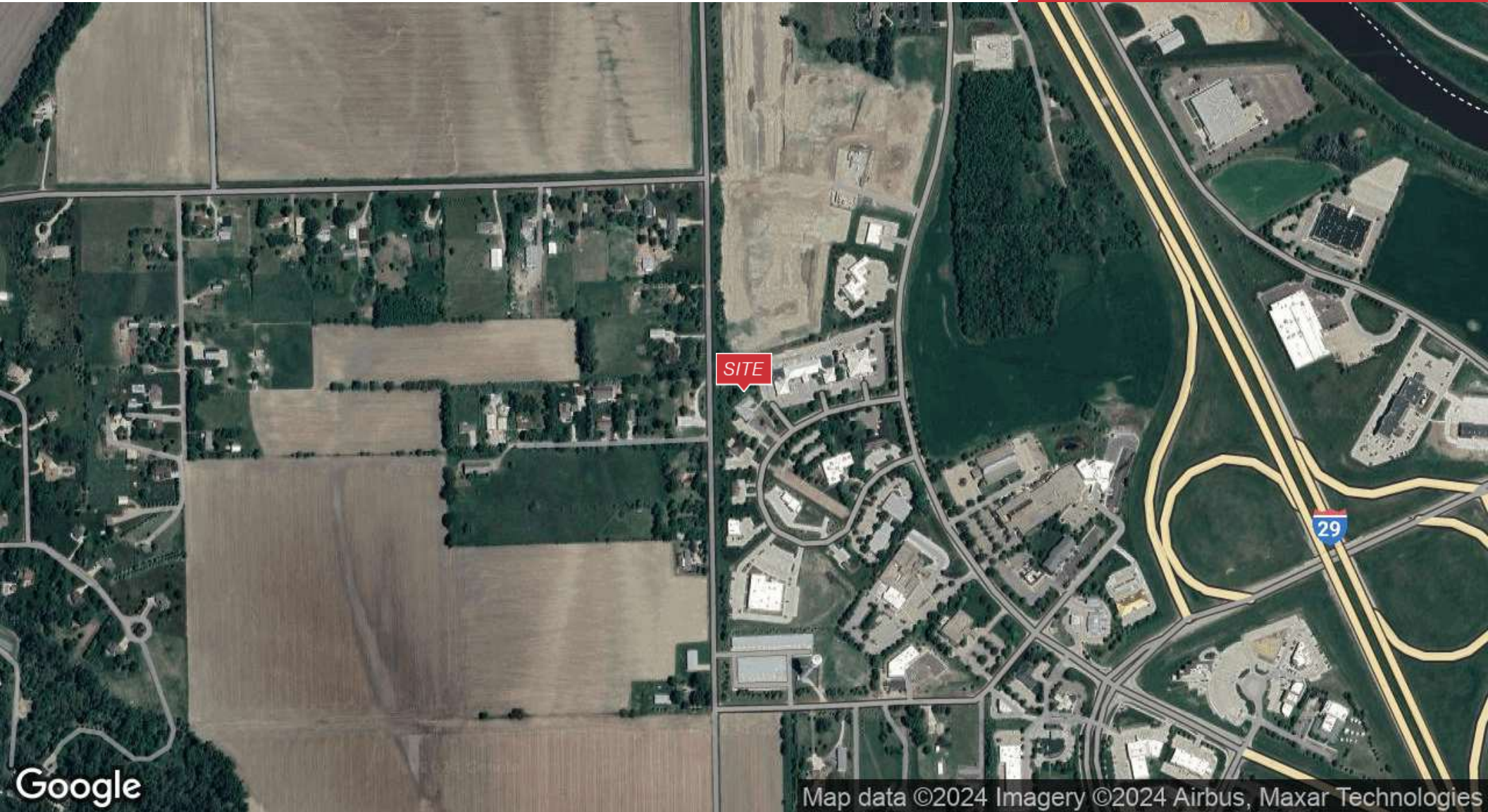
| | |
|--------------------------|------------|
| Taxes | \$4,865.58 |
| Foreclosure / Distressed | No |

Property Information

| | |
|------------------|-----------------|
| Property Type | Office |
| Property Subtype | Office Building |
| Lot Size | 0.61 Acres |
| APN # | 23.IP.02.TR1A |
| Lot Frontage | 59 ft |
| Lot Depth | 353 ft |

Parking & Transportation

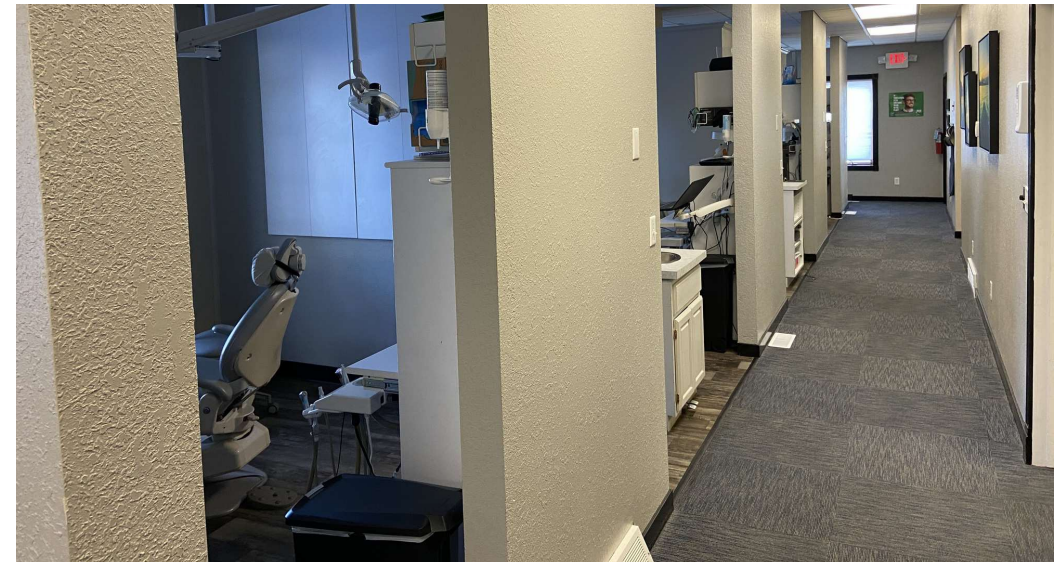
| | |
|--------------------------|-----|
| Parking Ratio | 4.1 |
| Number of Parking Spaces | 13 |

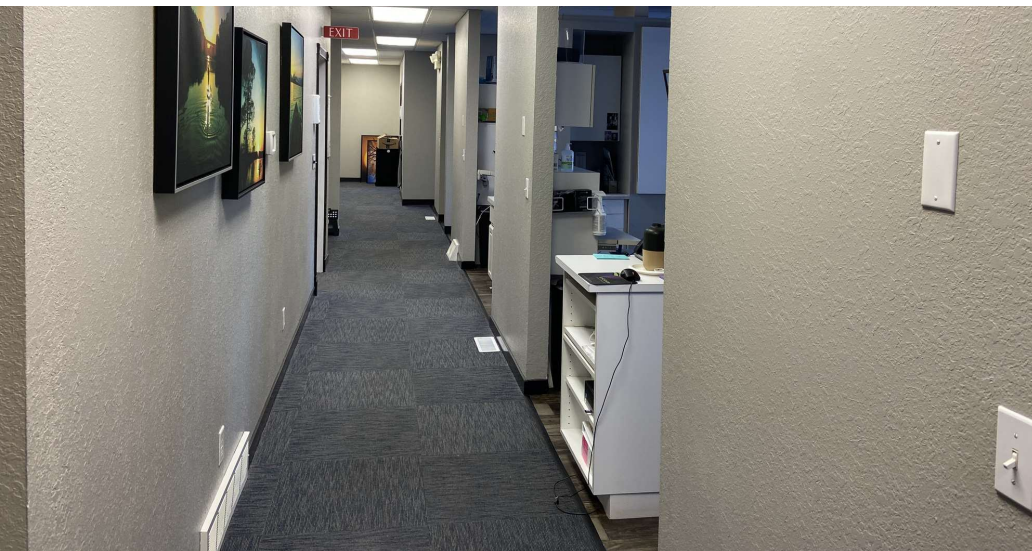
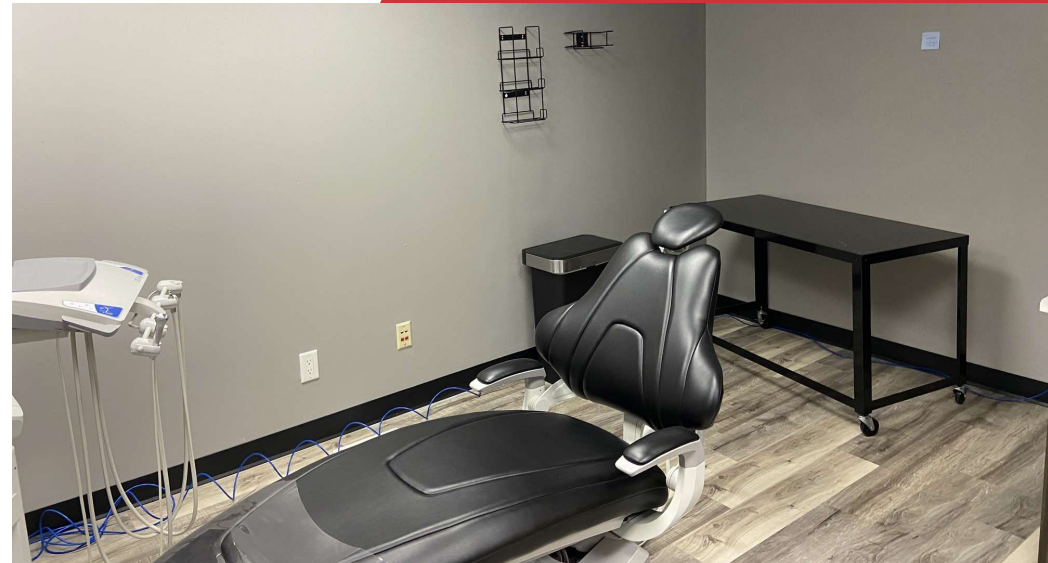


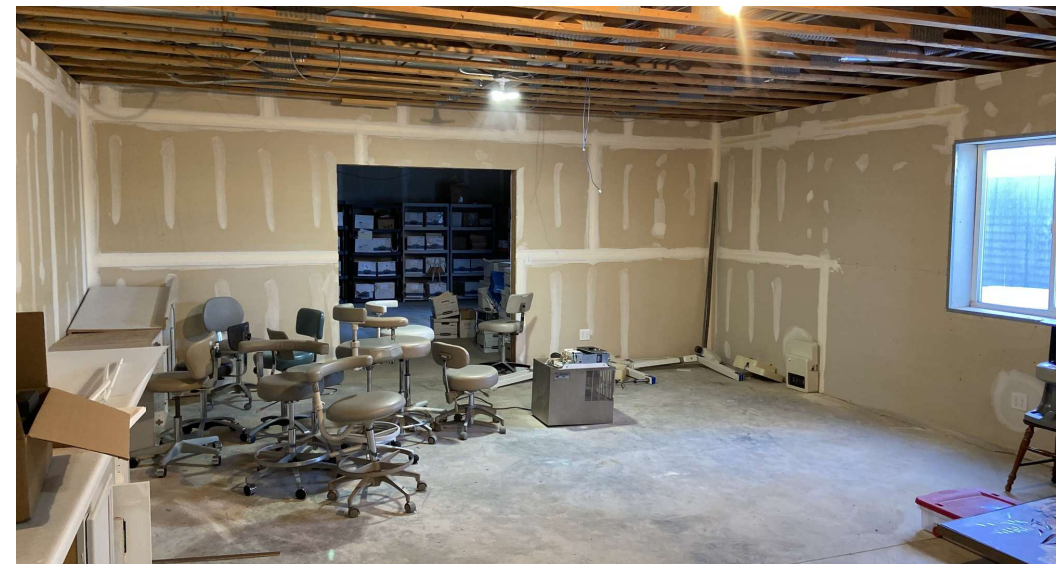
Google

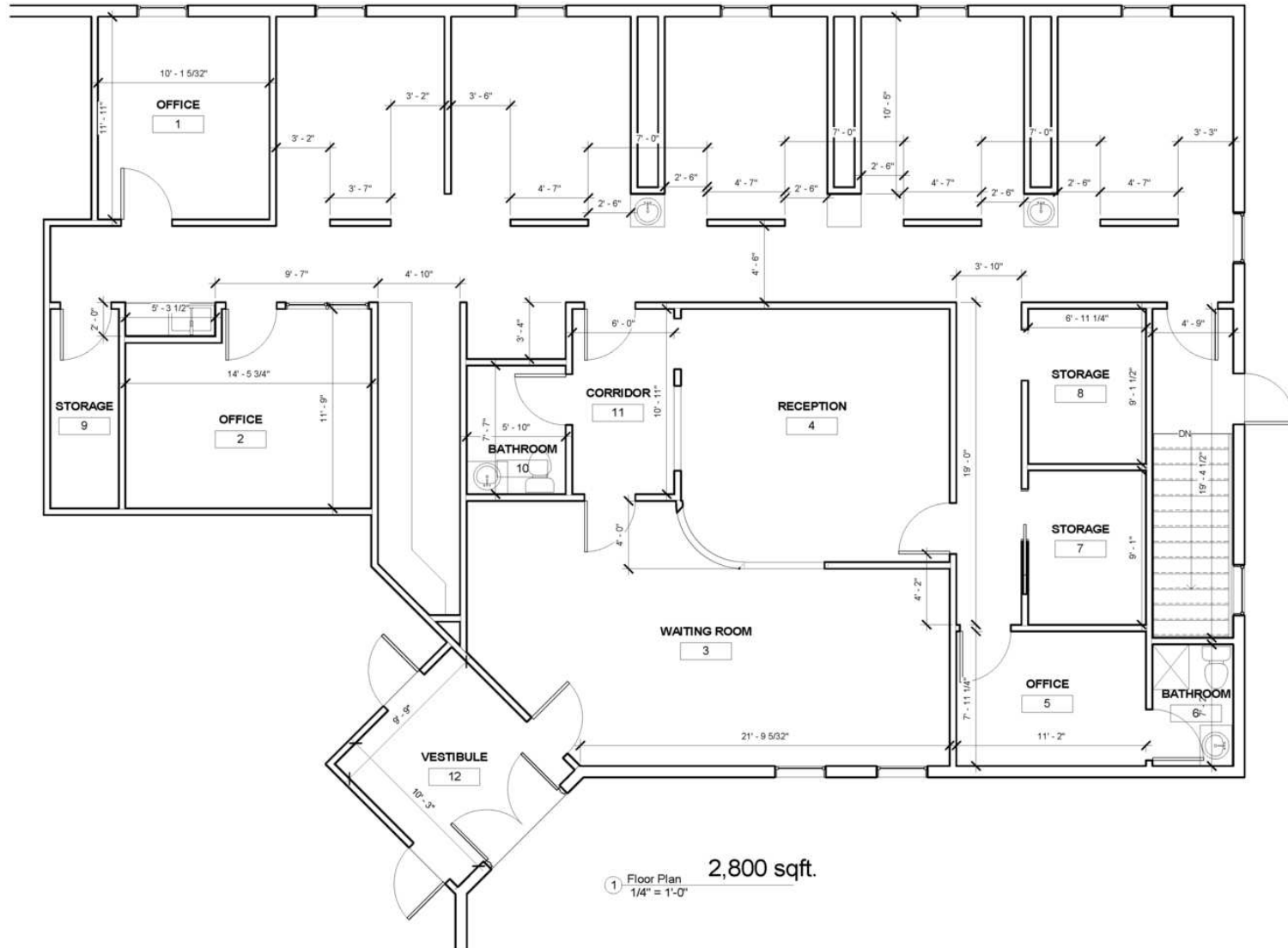
Map data ©2024 Imagery ©2024 Airbus, Maxar Technologies

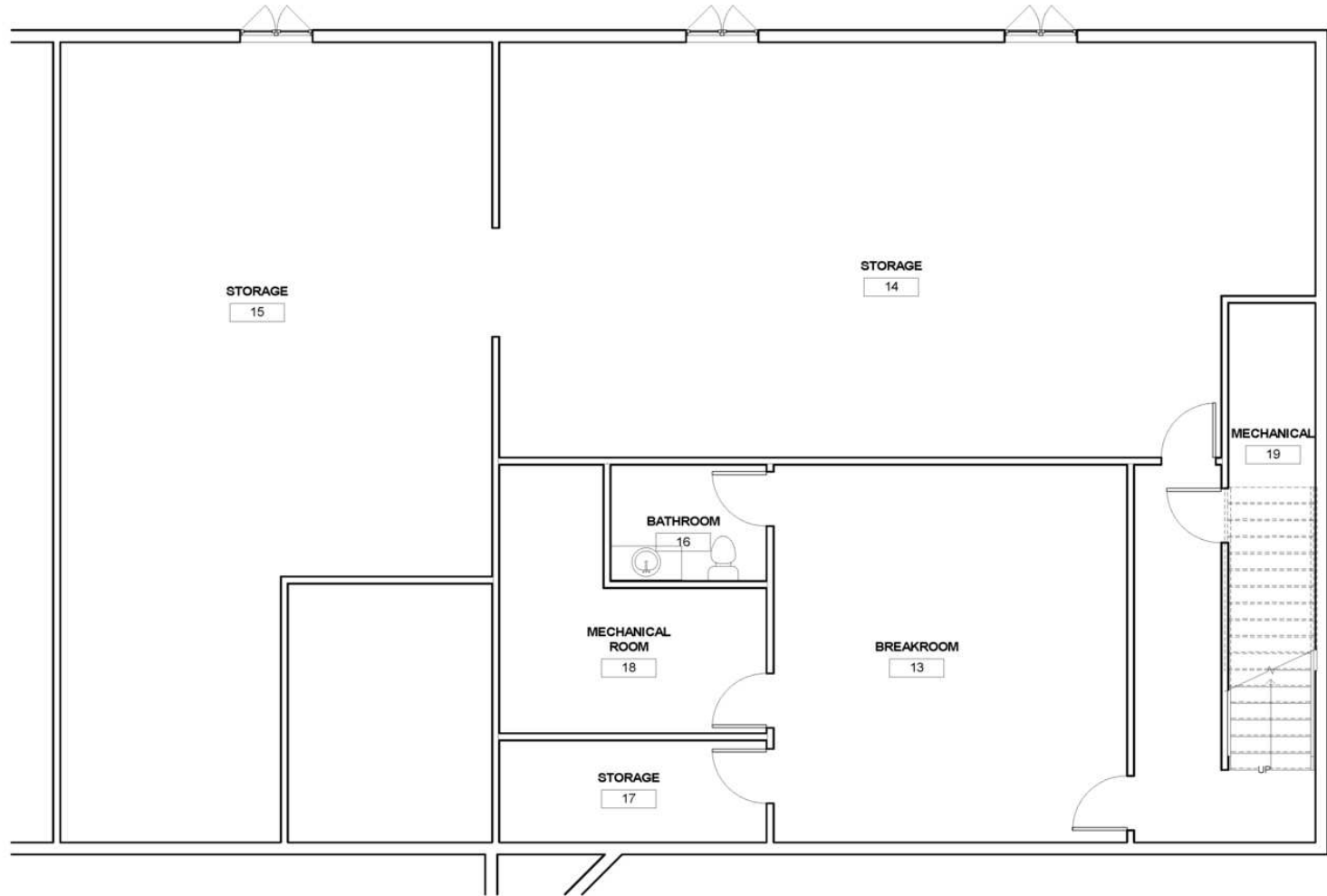
400 Gold Circle, Suite 120
Dakota Dunes, SD 57049
712 224 2727 tel
naiunited.com





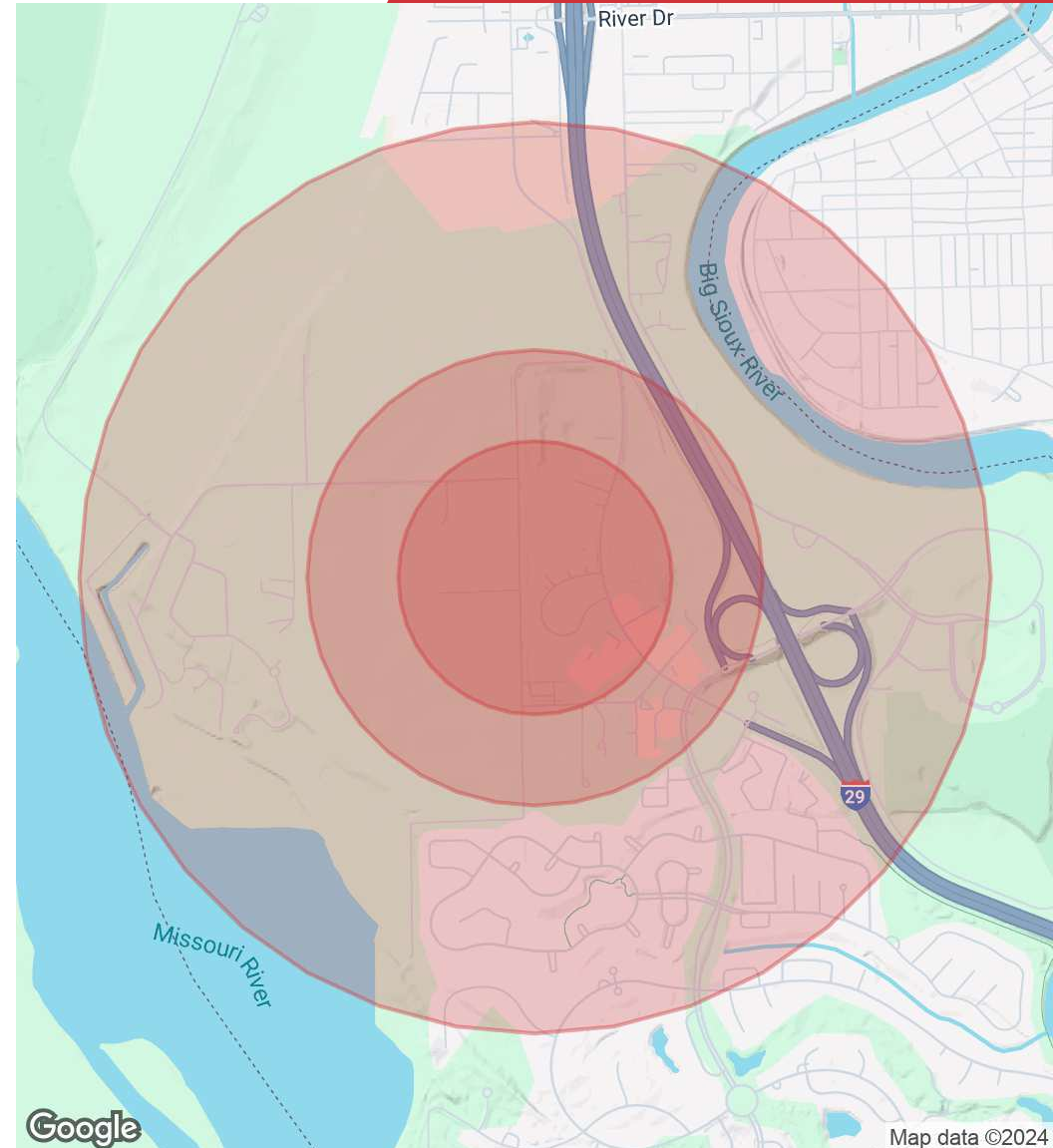






① basement
1/4" = 1'-0"

| Population | 0.3 Miles | 0.5 Miles | 1 Mile |
|--------------------------|-----------|-----------|-----------|
| Total Population | 37 | 171 | 2,477 |
| Average Age | 40 | 40 | 41 |
| Average Age (Male) | 40 | 40 | 40 |
| Average Age (Female) | 41 | 41 | 42 |
| Households & Income | 0.3 Miles | 0.5 Miles | 1 Mile |
| Total Households | 17 | 74 | 1,002 |
| # of Persons per HH | 2.2 | 2.3 | 2.5 |
| Average HH Income | \$121,787 | \$140,738 | \$146,543 |
| Average House Value | \$360,215 | \$427,901 | \$439,551 |
| Ethnicity (%) | 0.3 Miles | 0.5 Miles | 1 Mile |
| Hispanic | 10.8% | 8.2% | 8.0% |
| Race | 0.3 Miles | 0.5 Miles | 1 Mile |
| Total Population - White | 29 | 139 | 2,066 |
| % White | 78.4% | 81.3% | 83.4% |
| Total Population - Black | 1 | 4 | 55 |
| % Black | 2.7% | 2.3% | 2.2% |
| Total Population - Asian | 0 | 3 | 64 |



| | | | |
|------------------------------------|------|------|------|
| % Asian | 0.0% | 1.8% | 2.6% |
| Total Population - Hawaiian | 1 | 3 | 16 |
| % Hawaiian | 2.7% | 1.8% | 0.6% |
| Total Population - American Indian | 1 | 2 | 28 |
| % American Indian | 2.7% | 1.2% | 1.1% |
| Total Population - Other | 2 | 5 | 75 |
| % Other | 5.4% | 2.9% | 3.0% |

* Demographic data derived from 2020 ACS - US Census

