










FOR LEASE / FOR SALE

2800 15th St E Bradenton, FL 34208



	Building:	32,746 ± SF
	Warehouse:	27,050 ± SF
	Office/Showroom:	5,696 ± SF
	Year Built:	2006
	Storage Sheds:	(1) 12,000 ± SF (2) 4,200 ± SF (3) 4,000 ± SF (Total) 20,200 ± SF
	Doors:	(1) Dock 16' x 12' (1) Grade 12' x 12' (1) Grade 16' x 12'
	Land Size:	10.17 Acres

Additional Features:



Rail Service



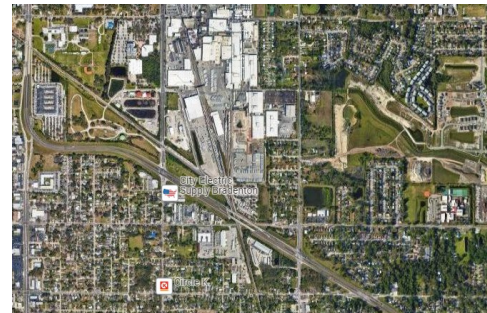
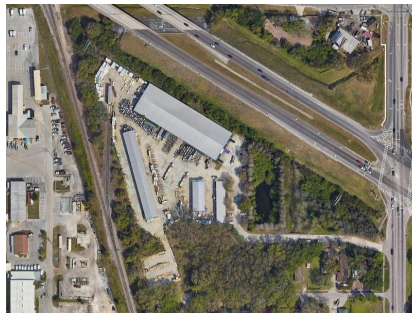
Private Road



Paved Outdoor Storage



Fenced/Gated



McNulty Group, Inc. is the agent of the Landlord or Seller of this property and will be paid by the Landlord or Seller. All information furnished with respect to the subject property has been obtained from sources deemed reliable. No representation as to accuracy thereof is made. This offering is subject to errors, omissions, prior sales or withdrawal without notice.

JOHN MASON

Sales Associate

John@mcnultygroupinc.com

239-919-2731

McNulty Group Inc.

2315 Lynx Lane, Suite 6

Orlando, Florida 32804

407-532-3441



FOR LEASE / FOR SALE

2800 15th St E Bradenton, FL 34208



JOHN MASON

Sales Associate

John@mcnultygroupinc.com

239-919-2731

mcnultygroupinc.com

McNulty Group Inc.

2315 Lynx Lane, Suite 6

Orlando, Florida 32804

407-532-3441