



Flexible retail unit available in busy plaza

- Grocery and beer store anchored plaza
- Corner property visible to over 20,500 cars a day
- Shell space with truck level pad



2,051 sf



Retail plaza



20,500 vehicles a day

Charlie Gobert

Sales Representative, Principal

+1 226 289 2836

charlie.gobert@avisonyoung.com

Nolan Adkin

Broker, Principal

+1 226 289 2799

nolan.adkin@avisonyoung.com

avisonyoung.ca



Platinum
member

Property details

Great retail location in a south east London, grocery anchored plaza at the corner of Trafalgar and Clarke Road. The high exposure plaza is visible to over 20,500 vehicles a day and minutes from the 401 highway.

Unit 5A is the last remaining unit totaling 2,051 sf with one dedicated truck level loading dock.

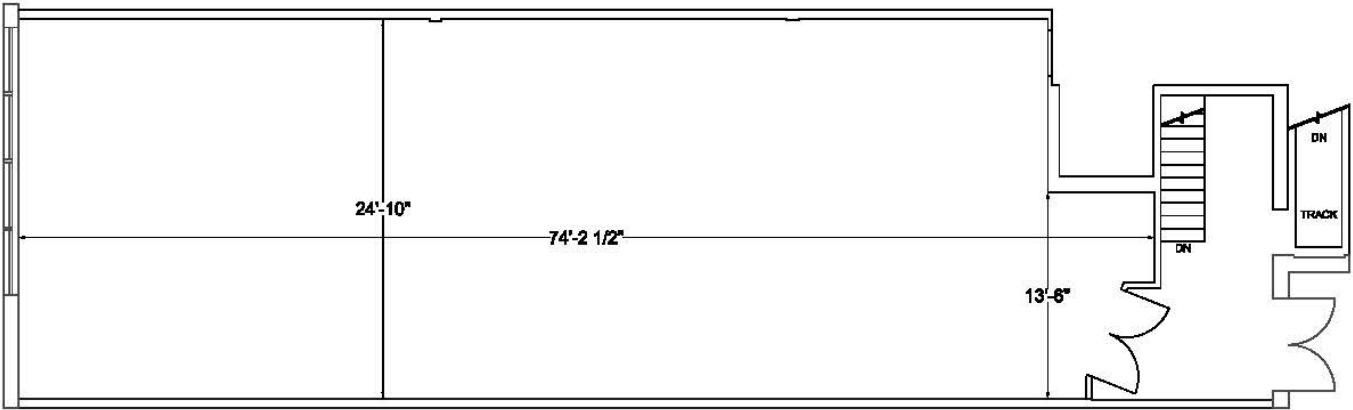
Contact listing agents to arrange a showing or with any questions.

| | |
|-----------------|---|
| Available area | 2,051 sf |
| Frontage | 619.19 feet on Clarke 715.46 feet on Trafalgar |
| Shipping | One truck level |
| Zoning | CSA3 |
| Parking | Ample onsite |
| Public transit | Multiple routes |
| Asking net rate | \$20 psf |
| Additional rent | \$11.50 psf |

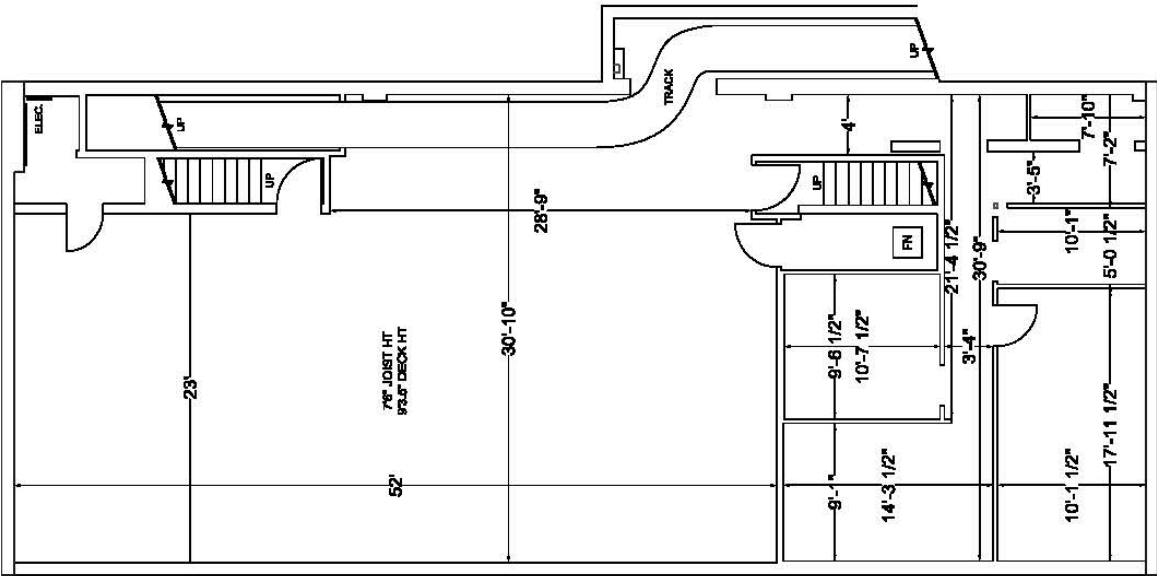


Floor plan

Main floor



Basement





99,937

Population 5km



106,394

Daytime population 5km



\$59,292

Median hshld income 5km



38.2

Median age 5km



Get more information

Charlie Gobert

Sales Representative, Principal

+1 226 289 2836

charlie.gobert@avisonyoung.com

Nolan Adkin

Broker, Principal

+1 226 289 2799

nolan.adkin@avisonyoung.com

Avison Young Commercial Real Estate Services, LP, Brokerage

495 Richmond Street, Unit 104, London, ON N6A 5A9

T +1 226 366 9090 F +1 866 541 9755

**AVISON
YOUNG**

