

CUSHMAN &  
WAKEFIELD

AVAILABLE  
FOR SUBLEASE

# TOWNE RIDGE CENTER



**SOUTH TOWER, SUITE 500**  
75 WEST TOWNE RIDGE PARKWAY  
SANDY, UTAH



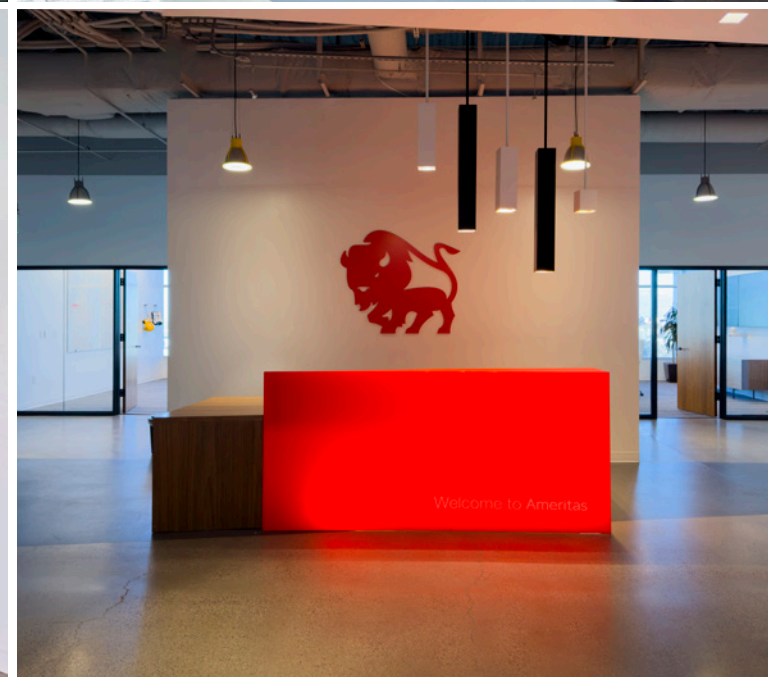
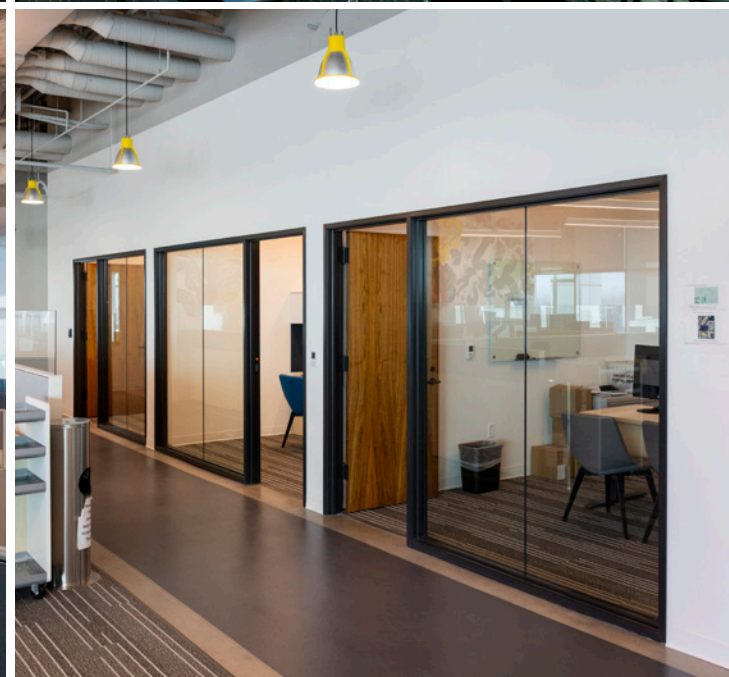
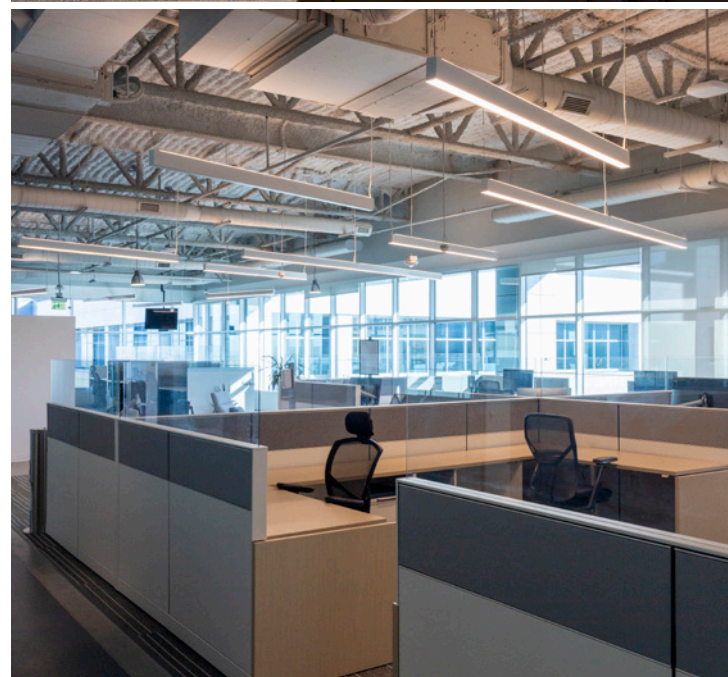
AVAILABLE FOR SUBLEASE

# TOWNE RIDGE CENTER

## SOUTH TOWER, SUITE 500

Towne Ridge Center, situated in Sandy, Utah within Salt Lake City's renowned "Silicon Slopes," features two newly built Class A office towers complemented by generous garage and surface parking. Distinguished by contemporary architectural details, expansive floor plates, and sweeping mountain views, this development stands out as one of the premier office destinations in the region.

- Available: 24,360 SF
- Rate: \$24.00/ RSF
- LED: February 28, 2029
- 250,000 SF campus
- 5-story buildings, 125,000 SF each
- Abundant structured and ground parking
- On-site security and property management
- Solar panels generate up to 25% of the building's power usage
- Several area and on-property dining options
- New amenities space including an updated fitness center with towel service, 60-80 seat meeting room and lounge area under construction
- Close proximity to TRAX Light Rail, Mountain America Exposition Center, The Shoppes at South Town, Jordan Commons, and the Rio Tinto Stadium





AVAILABLE FOR SUBLEASE

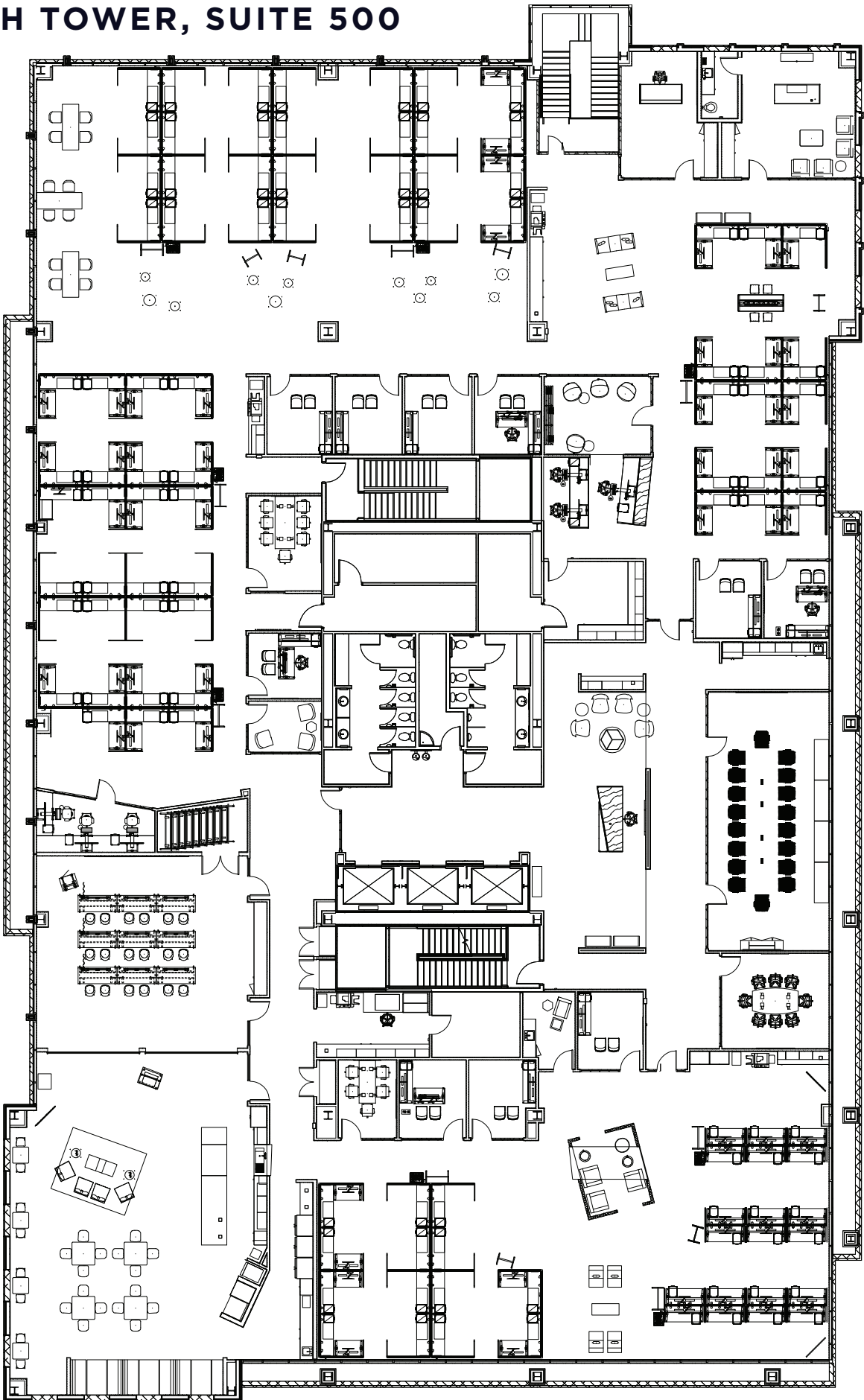
# TOWNE RIDGE CENTER

## NEW AMENITY SPACE

- 60-80 SEAT MEETING ROOM
- LOUNGE / BREAK AREA
- FITNESS CENTER
- SECURITY



## SOUTH TOWER, SUITE 500







Downtown  
Salt Lake City  
23 Min / 18.1 Miles

University of Utah  
26 Min / 19.2 Miles

 Salt Lake City  
International Airport  
20 Min / 20.1 Miles

THE SHOPS AT  
SOUTH TOWN



HALE

**SITE**

State Street

9400 South

MOUNTAIN  
AMERICA  
EXHIBITION CENTER

JORDAN COMMONS

AMERICA FIRST  
FIELD

15

# TOWNE RIDGE CENTER



# TOWNE RIDGE CENTER

SOUTH TOWER, SUITE 500  
75 WEST TOWNE RIDGE PARKWAY  
SANDY, UTAH



FOR ADDITIONAL INFORMATION, CONTACT:

**Dana Baird, ccim**

Executive Managing Director  
+1 801 303 5526  
dana.baird@cushwake.com

**Mike Richmond**

Executive Managing Director  
+1 801 303 5434  
mike.richmond@cushwake.com



170 South Main Street Suite 1600  
Salt Lake City, UT  
+1 801 322 2000 [cushmanwakefield.com](http://cushmanwakefield.com)

Cushman & Wakefield Copyright 2025. No warranty or representation, express or implied, is made to the accuracy or completeness of the information contained herein, and same is submitted subject to errors, omissions, change of price, rental or other conditions, withdrawal without notice, and to any special listing conditions imposed by the property owner(s). As applicable, we make no representation as to the condition of the property (or properties) in question. (G:\UT\SL1\Shared\Apps\Gigas\1 - Projects\Richmond, Mike\1 - Flyers\75WestTowneRidgeParkway\_Suite500)