

INDUSTRIAL | FOR SALE



THE ANDREWS GROUP
COMMERCIAL REAL ESTATE



PROPERTY HIGHLIGHTS

- 6,632 SF (building)
- Existing Offices & Showroom
- 14,026 SF | 0.32 AC (land)
- Large, Secure Yard / Parking
- Parking: 15 Spaces
- Rare Three-Sided Access
- Zoning: M1-1VL
- Can Be Delivered Vacant

ASKING

\$2,475,000 (\$373/psf)

18453 Parthenia Place, Northridge. CA.91325

For more information or to schedule a tour, please contact:

DAN ANDREWS

818.577.9357

Dan@TheAndrewsGrp.com

CA DRE 02018695

PETER ANDREWS

818.913.0663

Peter@TheAndrewsGrp.com

CA DRE 01897467

EXTERIOR PHOTOS



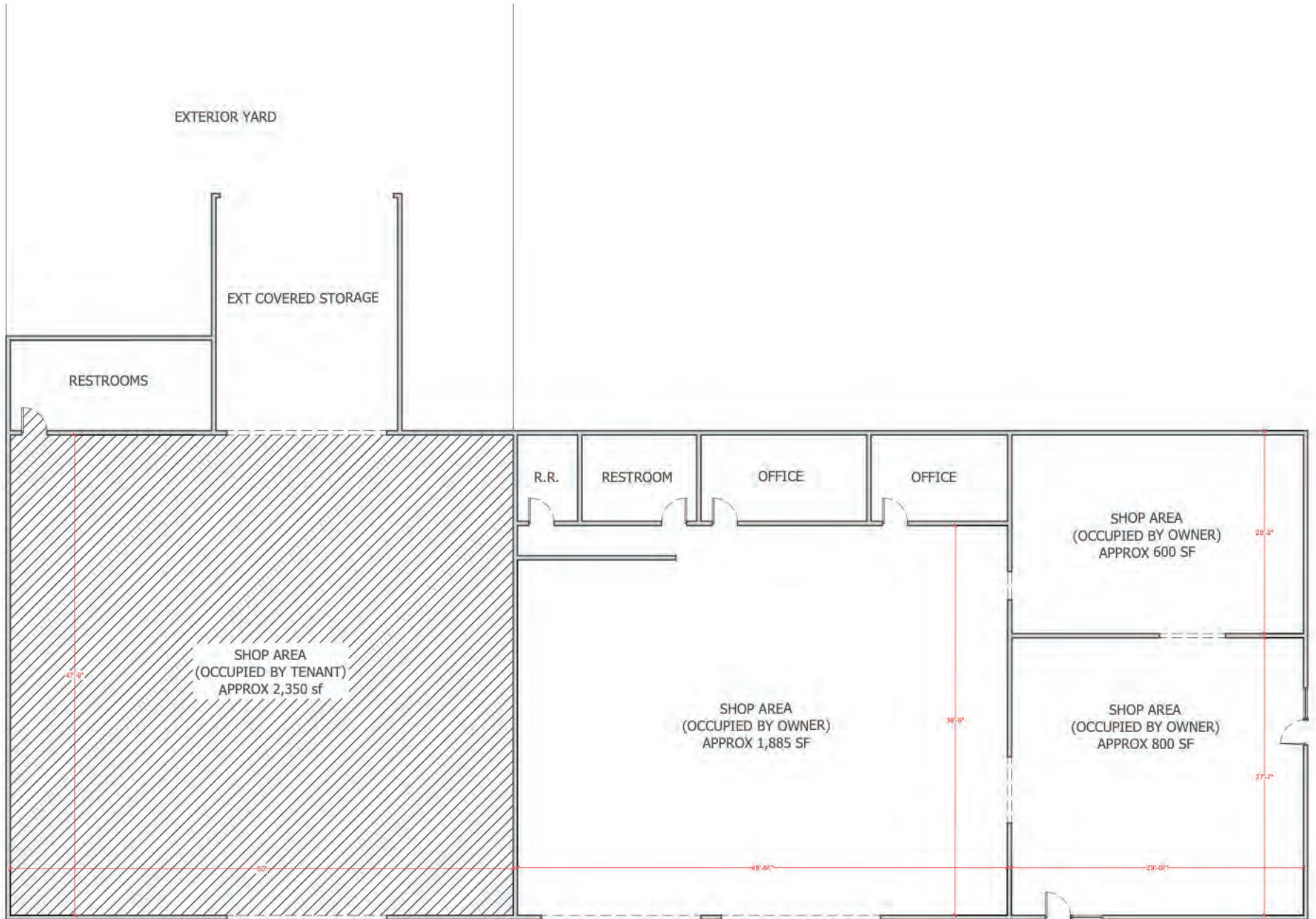
AERIAL PHOTOS



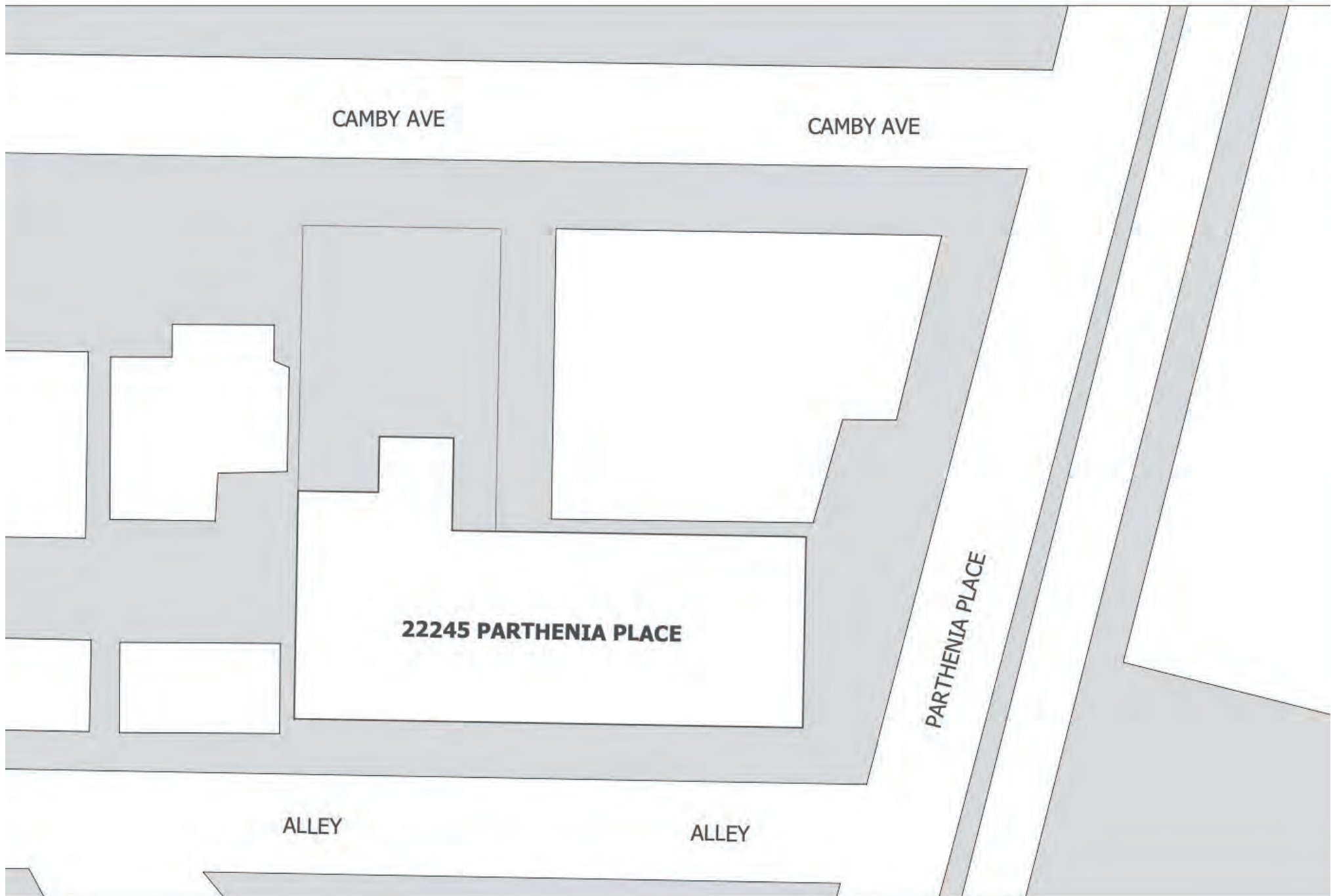
AERIAL PHOTOS



BUILDING FLOOR PLAN



FLOOR PLAN



INTERIOR PHOTOS





THE ANDREWS GROUP
COMMERCIAL REAL ESTATE

PINNACLE
ESTATE PROPERTIES, INC.

OFFERED EXCLUSIVELY BY

DAN ANDREWS

818.577.9357

Dan@TheAndrewsGrp.com

CA DRE 02018695

PETER ANDREWS

818.913.0663

Peter@TheAndrewsGrp.com

CA DRE 01897467

The Andrews Group operates as a division of Pinnacle Estate Properties, our responsible broker, which is licensed by the California Department of Real Estate under license number CA DRE 00905345. This affiliation ensures that all our real estate services, including property evaluation, marketing, negotiation, and transaction facilitation, comply with the highest standards and regulatory guidelines of the California Department of Real Estate.

The information contained herein has been obtained from sources deemed reliable. While every reasonable effort has been made to ensure its accuracy, we cannot guarantee it. No responsibility is assumed for any inaccuracies. Readers are encouraged to consult their professional advisors prior to acting on any of the material contained in this report. © 2024. All rights reserved.