

19456 Nordhoff Street Northridge, CA 91324

Located at the convergence of Nordhoff Street and Nordhoff Way

Contact: Eric Friedland
Cell: 818.398.0354 | eric@cirecre.com
BRE # 01969648

Join Water Wings Swim School – Northridge Mall Adjacent



HIGHLIGHTS

Features

- Approx. 3,500 SF Available.
- \$3.00 + \$0.65 NNN psf/monthly
- Northridge Mall Adjacent
- 35,000 Vehicle Count Per Day
- Building will be shared with Water Wings Swim School
- Ample Parking
- Close Proximity to Multi-Family Developments

Area Amenities

- Great Neighborhood Demographics
- Join Neighboring Retailers: Target, Costco, Porto's Bakery & Café, Northridge Fashion Center and many more!

Demographics

- 1-Mile: 18,411 (Average HH Income: \$100,179)
- 3-Mile: 235,116 (Average HH Income: \$93,561)
- 5-Mile: 528,901 (Average HH Income: \$99,003)

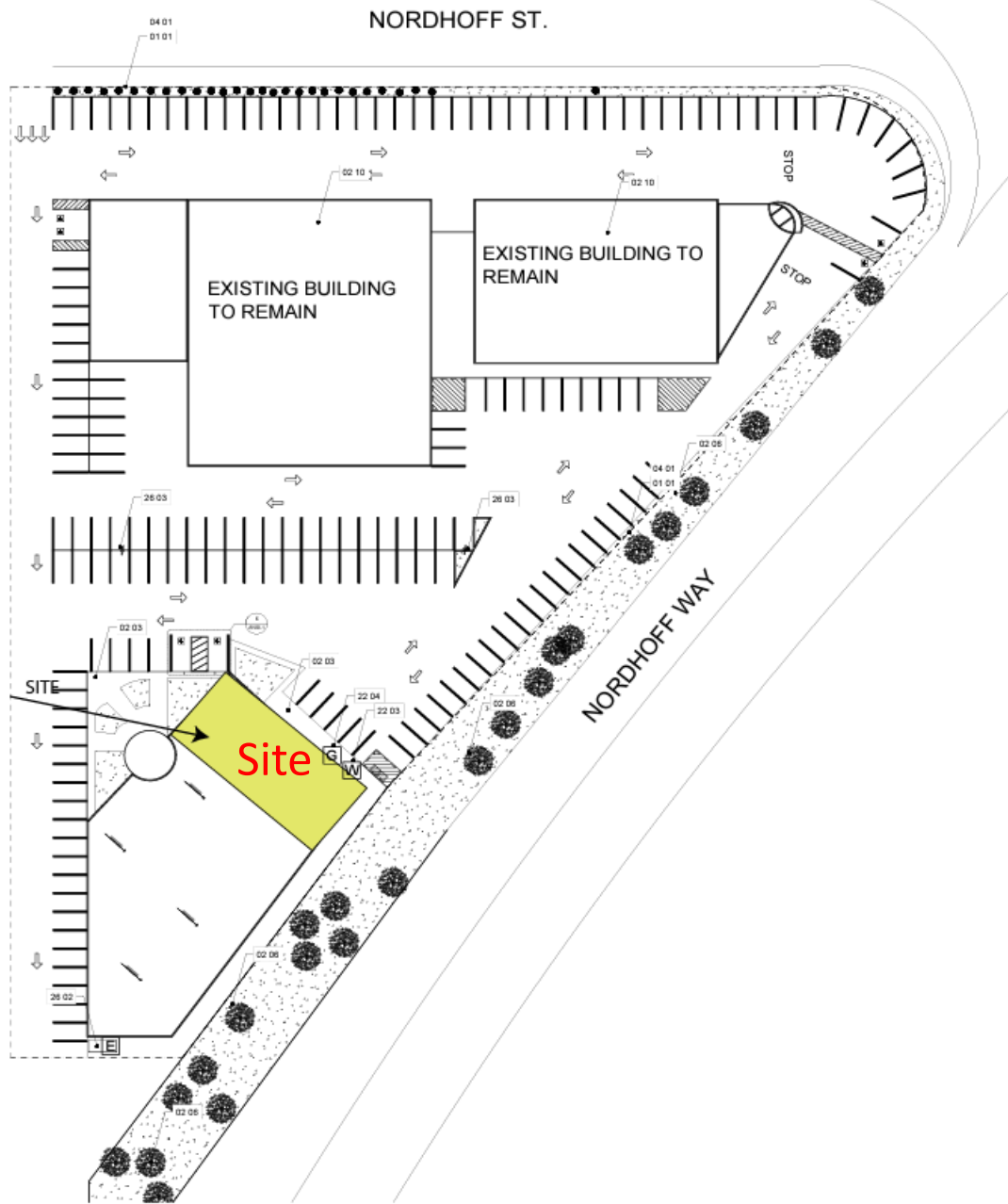
NEIGHBORING RETAILERS:



CIRE Commercial Real Estate, Inc. | 20855 Ventura Blvd., Suite 7, Woodland Hills, CA 91364 | cirecre.com

This information has been secured from sources we believe to be reliable, but we make no representations or warranties, expressed or implied, as to the accuracy of the information. References to square footage are approximate. References to neighboring retailers are subject to change, and may not be adjacent to the vacancy being marketed either prior to, during, or after leases are signed. Lessee must verify the information and bears all risk for any inaccuracies.



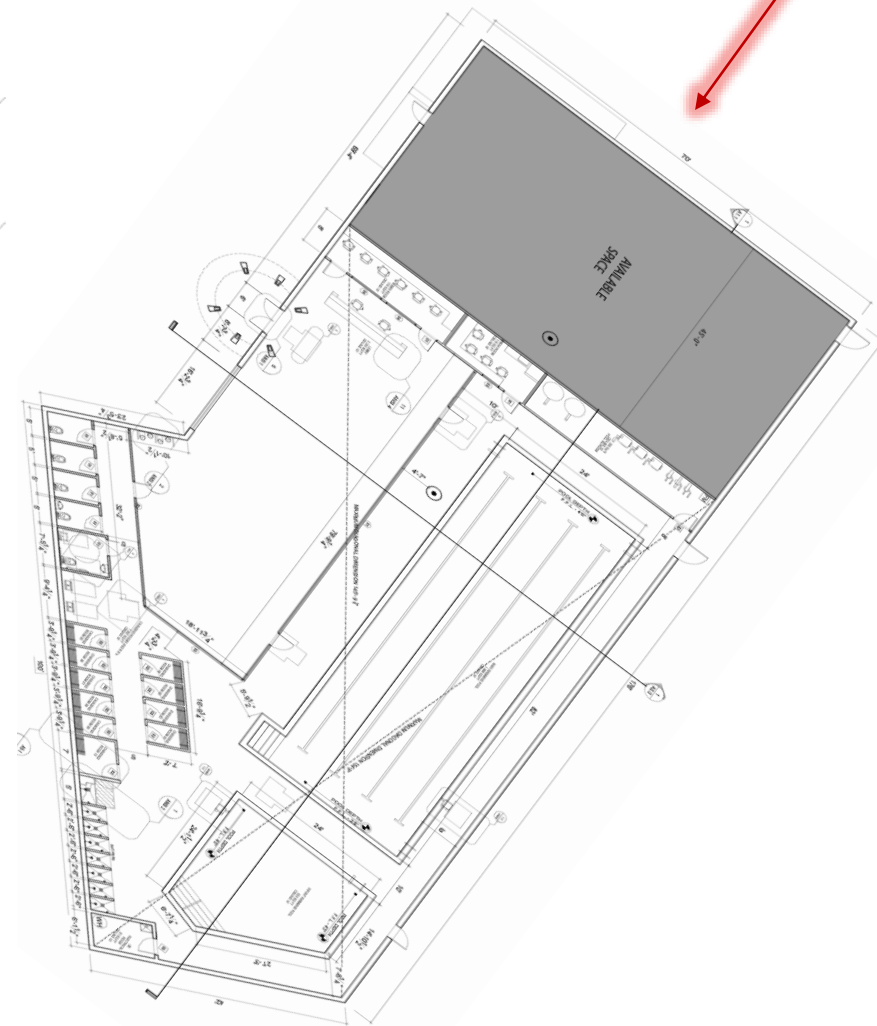


N

(E) Site plan

1/32" = 1'-0"

3,500 SF of contiguous space available!



Contact: Eric Friedland

Cell: 818.398.0354 |

eric@cirecre.com

BRE # 01969648

CIRE Commercial Real Estate, Inc. | 20855 Ventura Blvd., Suite 7, Woodland Hills, CA 91364 | cirecre.com

This information has been secured from sources we believe to be reliable, but we make no representations or warranties, expressed or implied, as to the accuracy of the information. References to square footage are approximate. References to neighboring retailers are subject to change, and may not be adjacent to the vacancy being marketed either prior to, during, or after leases are signed. Lessee must verify the information and bears all risk for any inaccuracies.



Water Wings Swim School



CIRE Commercial Real Estate, Inc. | 20855 Ventura Blvd., Suite 7, Woodland Hills, CA 91364 | cirecre.com

This information has been secured from sources we believe to be reliable, but we make no representations or warranties, expressed or implied, as to the accuracy of the information. References to square footage are approximate. References to neighboring retailers are subject to change, and may not be adjacent to the vacancy being marketed either prior to, during, or after leases are signed. Lessee must verify the information and bears all risk for any inaccuracies.



NORTHRIDGE FASHION CENTER

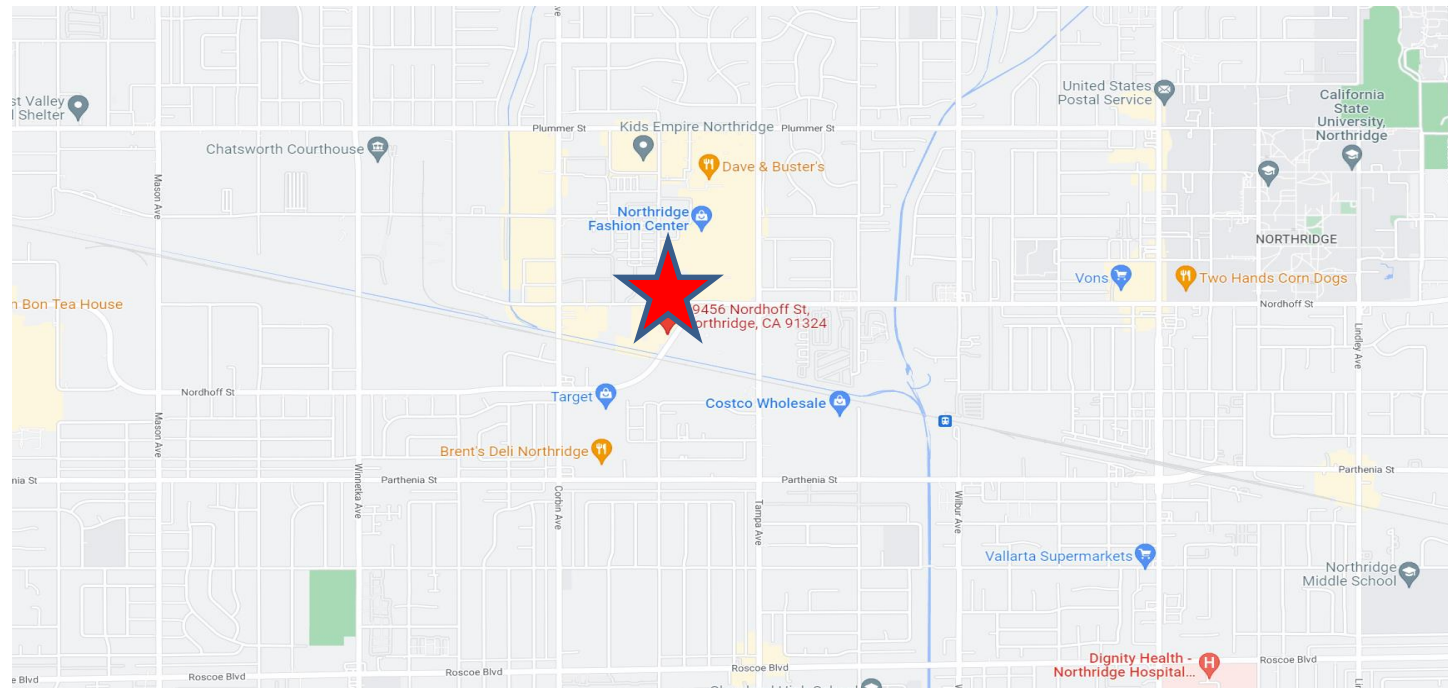
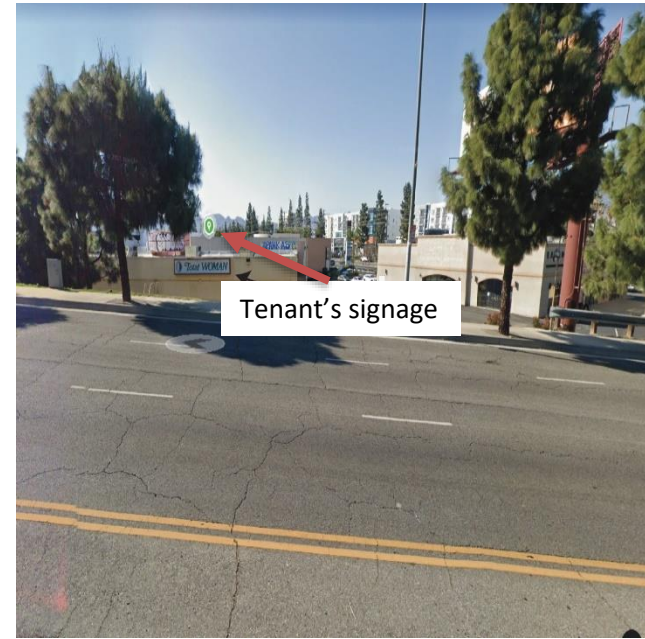


CIRE Commercial Real Estate, Inc. | 20855 Ventura Blvd., Suite 7, Woodland Hills, CA 91364 | cirecre.com

This information has been secured from sources we believe to be reliable, but we make no representations or warranties, expressed or implied, as to the accuracy of the information. References to square footage are approximate. References to neighboring retailers are subject to change, and may not be adjacent to the vacancy being marketed either prior to, during, or after leases are signed. Lessee must verify the information and bears all risk for any inaccuracies.



Tenant Signage



CIRE Commercial Real Estate, Inc. | 20855 Ventura Blvd., Suite 7, Woodland Hills, CA 91364 | cirecre.com

This information has been secured from sources we believe to be reliable, but we make no representations or warranties, expressed or implied, as to the accuracy of the information. References to square footage are approximate. References to neighboring retailers are subject to change, and may not be adjacent to the vacancy being marketed either prior to, during, or after leases are signed. Lessee must verify the information and bears all risk for any inaccuracies.

