

AVISON
YOUNG

25 Sheppard Ave W

Office Sublease

2 Suites
Available!

10th & 12th Floors





Details



Location
Sheppard Ave W & Yonge St



Asking Rent
To Be Negotiated



Occupancy
Immediate



Sublease Space*

Suites	Suite
1000/1010	1200
8,427 sf	19,383 sf
Leased 8,928 sf	



Additional Rent
\$28.25 psf (2024)

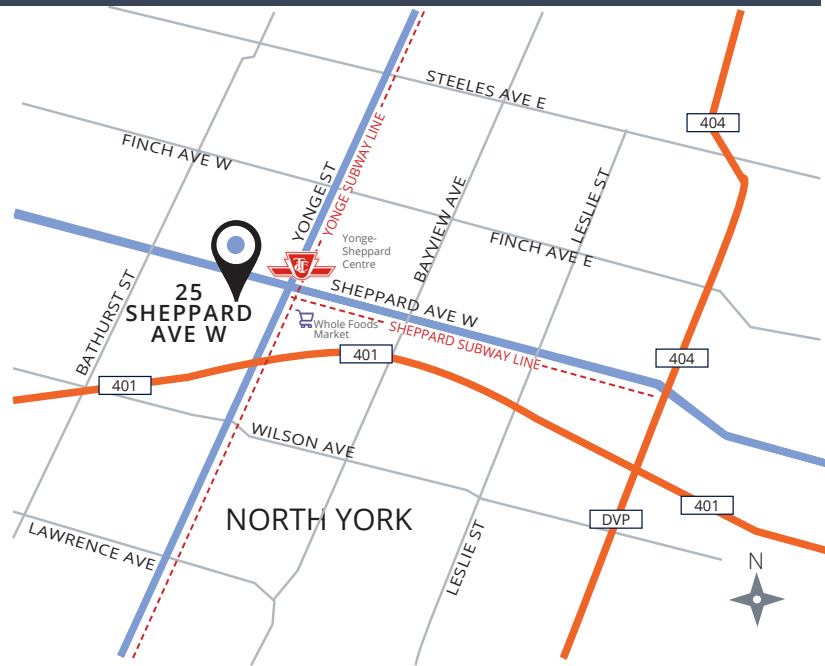


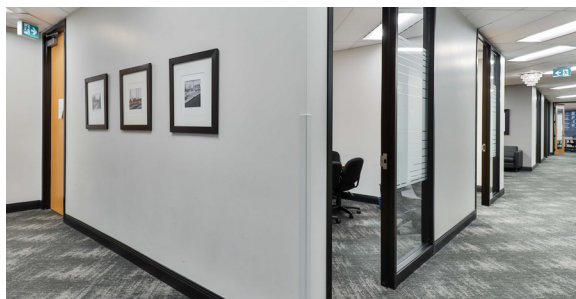
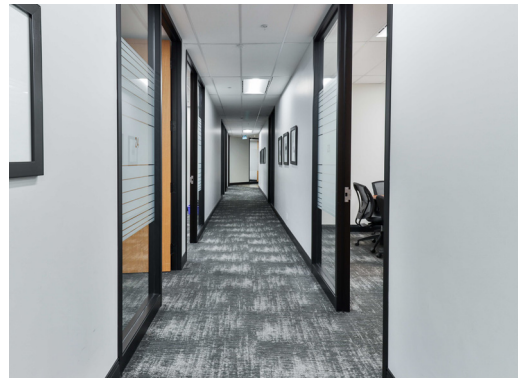
Sublease Term
July 31, 2028

Highlights

- Two suite options available
- Both suites are fully built-out premises with large windows providing ample natural light and beautiful views
- Building is directly connected to TTC Subway (Yonge & Sheppard subway lines)
- On site parking
- Easy access to Highway 401
- LEED Platinum building

*All measurements to be verified



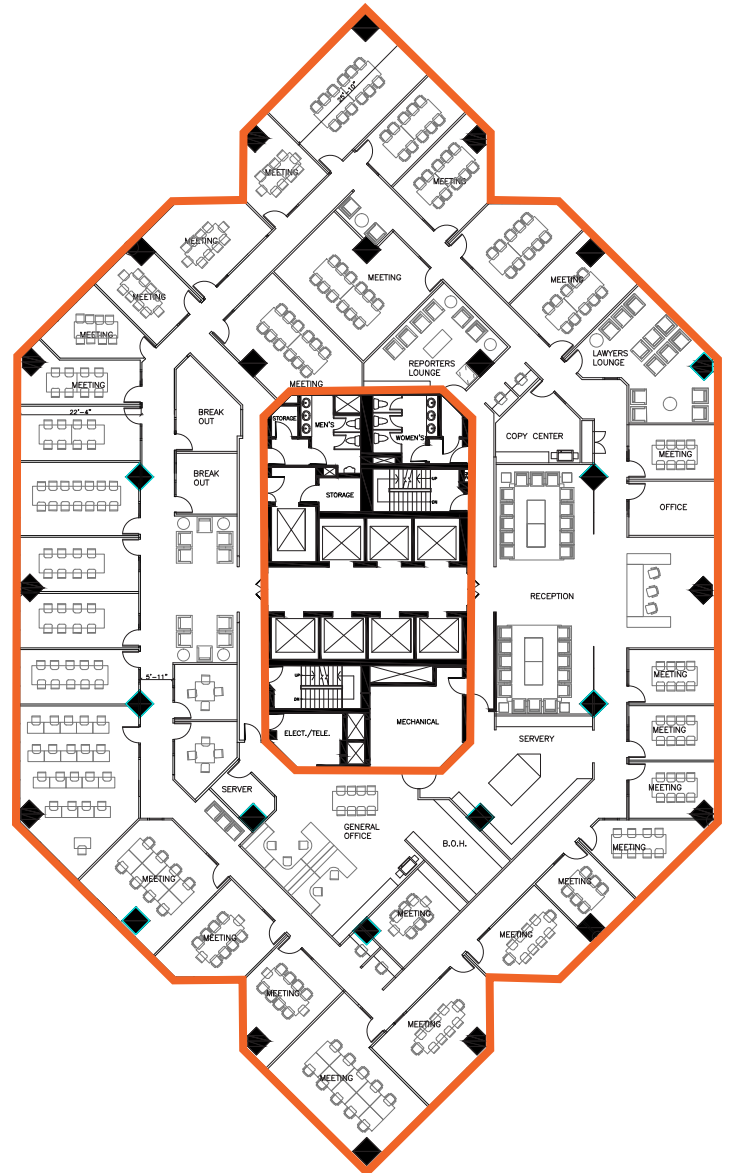


Floor Plans

Suites 1000/1010
8,427 sf AVAILABLE
8,928 sf LEASED



Suite 1200
19,383 sf AVAILABLE



Contact listing agents for more information:

Stan Krawitz
Principal, Broker
+1 416 822 9636
stan.krawitz@avisonyoung.com

Paul Kay
Principal, Sales Representative
+1 416 799 4455
paul.kay@avisonyoung.com