

## MEDICAL OFFICE LEASE

## BUILDING III SPACE AVAILABILITIES



# PLANO MEDICAL OFFICE BUILDING III

4001 W 15th St - Plano, TX 75075



### Availability:

- Suite 180/180A: 5,619 RSF
- Suite 465: 4,774 RSF
- Suite 490: 2,537 RSF

### Building Specs:

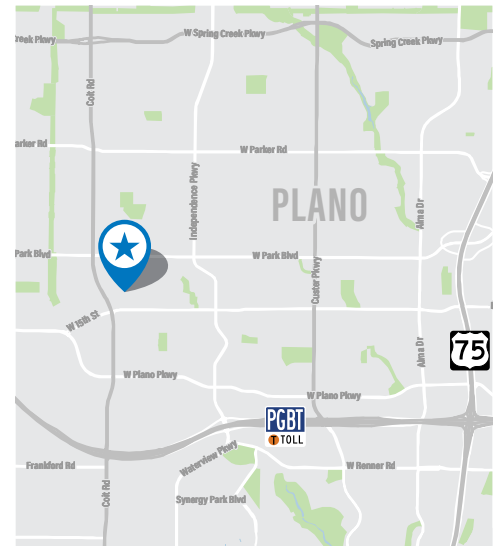
- 4-story medical office building
- 96,000 gross square feet
- Built in 2001

### Building Amenities:

- Medical / Office Space
- Free Surface Parking
- Monument Signage
- Signage
- Skyway
- Bus Line



[www.healthpeak.com](http://www.healthpeak.com)



### Leasing Information:

**Jeff Smith**  
Principal  
972.774.2516  
[Jeff.Smith@transwestern.com](mailto:Jeff.Smith@transwestern.com)

The information provided herein was obtained from sources believed reliable; however, Transwestern makes no guarantees, warranties or representations as to the completeness of accuracy thereof. The presentation of this property is submitted subject to errors, omissions, change of price or conditions, prior to sale or lease, or withdrawal without notice. Copyright © 2025 Transwestern.

MEDICAL  
OFFICE  
LEASE

5,619 RSF

Suite 180/180A

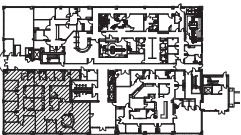
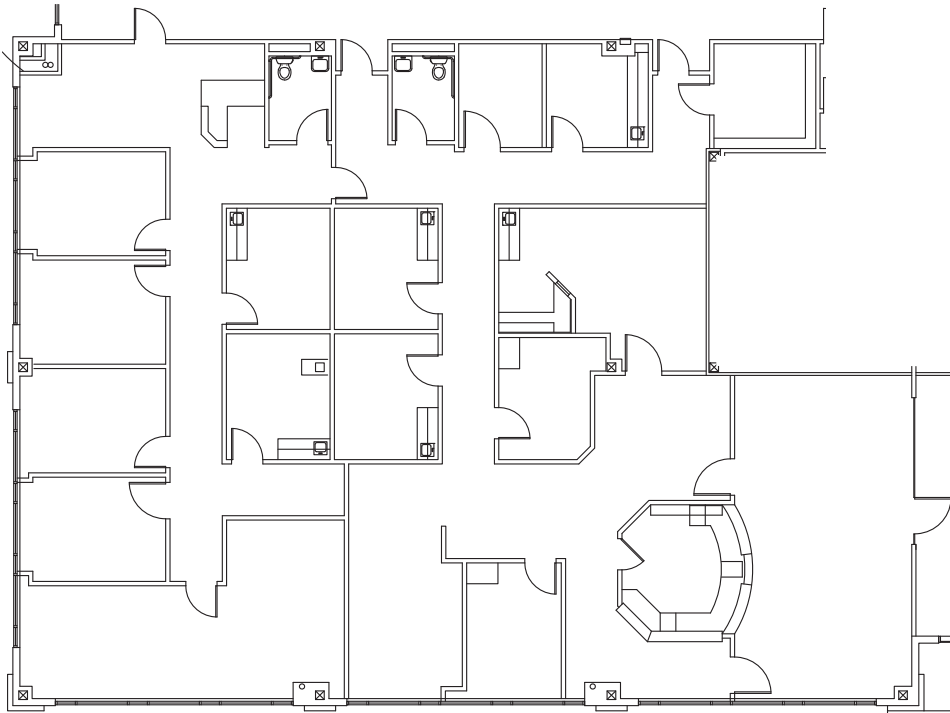


TRANSWESTERN

REAL ESTATE  
SERVICES

# PLANO MEDICAL OFFICE BUILDING III

4001 W 15th St - Plano, TX 75075



## Availability:

- Suite 180/180A: 5,619 RSF

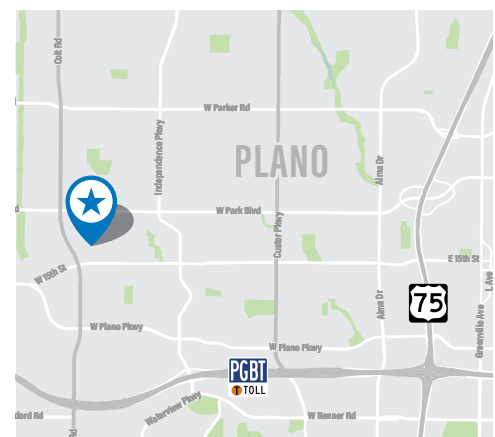
## Building Amenities:

- Medical / Office Space
- Free Surface Parking
- Monument Signage
- Signage
- Skyway
- Bus Line



Healthpeak<sup>TM</sup>  
PROPERTIES

[www.healthpeak.com](http://www.healthpeak.com)



## Leasing Information:

Jeff Smith  
Principal

972.774.2516

[Jeff.Smith@transwestern.com](mailto:Jeff.Smith@transwestern.com)

The information provided herein was obtained from sources believed reliable; however, Transwestern makes no guarantees, warranties or representations as to the completeness of accuracy thereof. The presentation of this property is submitted subject to errors, omissions, change of price or conditions, prior to sale or lease, or withdrawal without notice. Copyright © 2025 Transwestern.

MEDICAL  
OFFICE  
LEASE

4,774 RSF

Suite 465

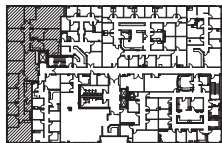
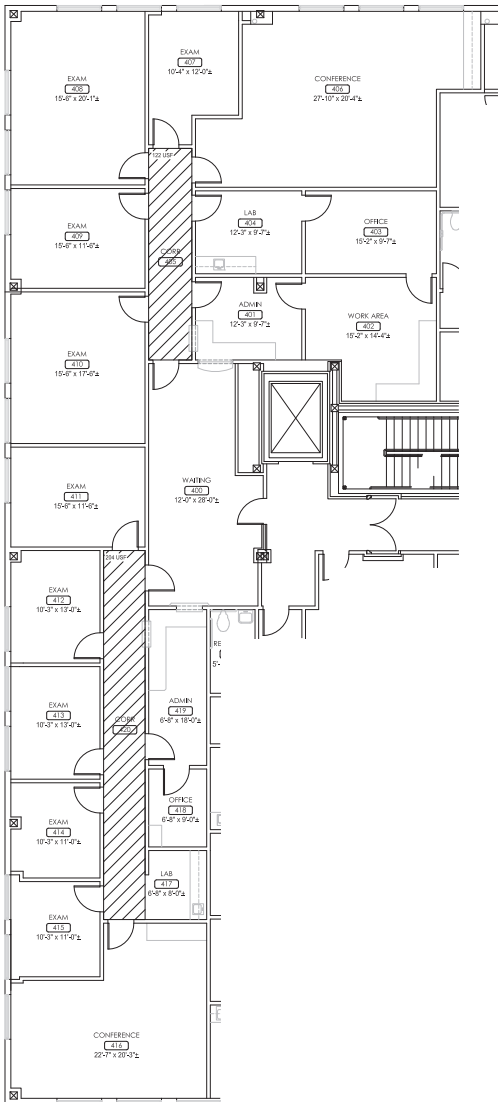


TRANSWESTERN

REAL ESTATE  
SERVICES

# PLANO MEDICAL OFFICE BUILDING III

4001 W 15th St - Plano, TX 75075



## Availability:

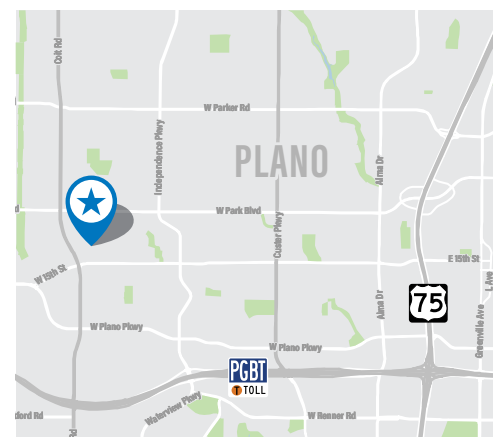
- Suite 465:: 4,774 RSF

## Building Amenities:

- Medical / Office Space
- Free Surface Parking
- Monument Signage
- Signage
- Skyway
- Bus Line



[www.healthpeak.com](http://www.healthpeak.com)



## Leasing Information:

**Jeff Smith**  
**Principal**

972.774.2516

[Jeff.Smith@transwestern.com](mailto:Jeff.Smith@transwestern.com)

The information provided herein was obtained from sources believed reliable; however, Transwestern makes no guarantees, warranties or representations as to the completeness of accuracy thereof. The presentation of this property is submitted subject to errors, omissions, change of price or conditions, prior to sale or lease, or withdrawal without notice. Copyright © 2025 Transwestern.

Suite 490

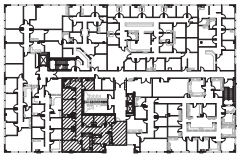
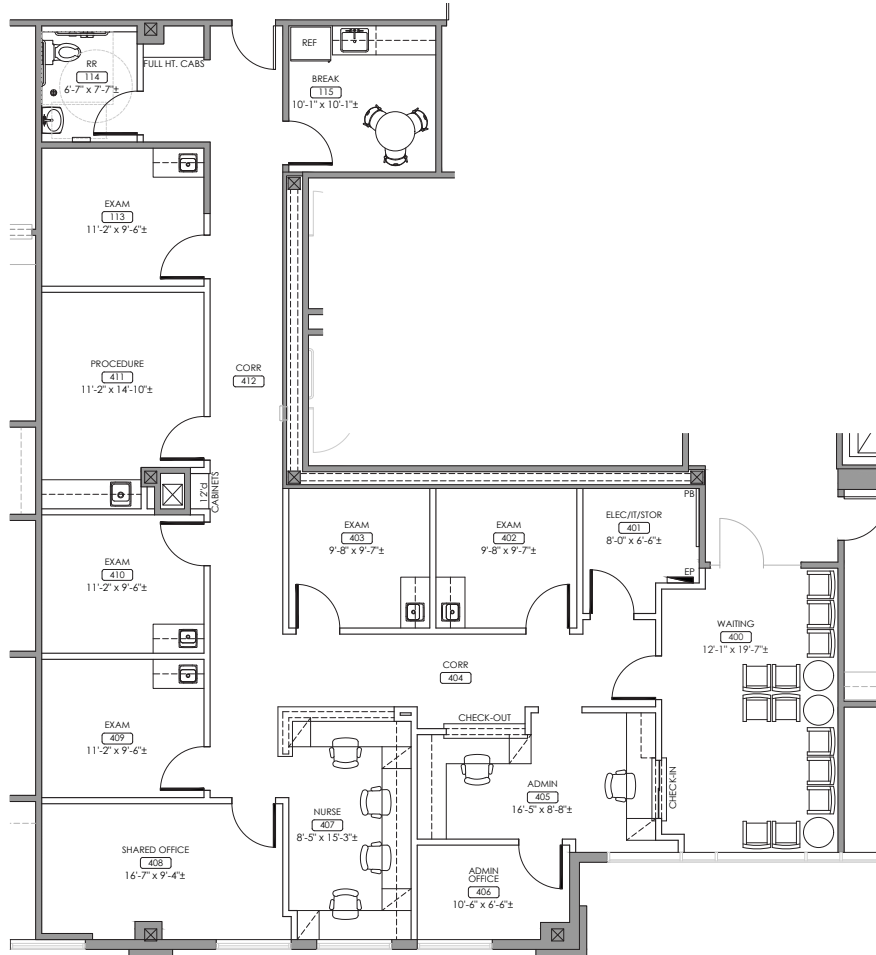


**TRANSWESTERN**

## REAL ESTATE SERVICES

# PLANO MEDICAL OFFICE BUILDING III

4001 W 15th St - Plano, TX 75075



**Availability:**

- Suite 490: 2,537 RSF

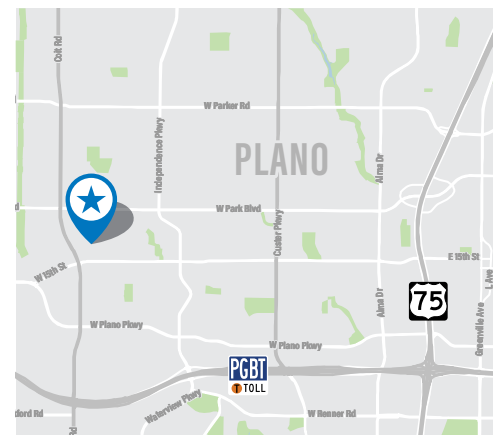
### Building Amenities:

- Medical / Office Space
- Free Surface Parking
- Monument Signage
- Signage
- Skyway
- Bus Line



**Healthpeak**<sup>TM</sup>  
PROPERTIES

[www.healthpeak.com](http://www.healthpeak.com)



## Leasing Information:

**Jeff Smith**  
Principal

972.774.2516

Jeff.Smith@transwestern.com

The information provided herein was obtained from sources believed reliable; however, Transwestern makes no guarantees, warranties or representations as to the completeness of accuracy thereof. The presentation of this property is submitted subject to errors, omissions, change of price or conditions, prior to sale or lease, or withdrawal without notice. Copyright © 2025 Transwestern.