

# PARTELL MEDICAL CENTER

2870 S. MARYLAND PARKWAY, LAS VEGAS, NV 89109

FOR LEASE



**MICHAEL K. HSU**

First Vice President  
Lic. S.51609.LLC  
T +1 702 369 4866  
C +1 702 768 6459  
michael.hsu@cbre.com

**TONYA GOTTESMAN**

Vice President  
Lic. S.0189043  
T +1 702 369 4882  
C +1 310 612 3592  
tonya.gottesman@cbre.com

**RYAN MARTIN, SIOR, CCIM**

Senior Vice President  
Lic. BS 0048284  
T +1 702 369 4881  
C +1 702 630 2671  
ryan.martin@cbre.com

**ANTONETTE ROLDA**

Client Services Specialist  
Lic. S.0199545  
T +1 702 369 4877  
C +1 714 493 0165  
antonette.rolda@cbre.com

**CBRE**

2

# Property Highlights

Situated in the Central East submarket, the property is conveniently located within walking distance to Sunrise Hospital and Medical Center and Sunrise Children's Hospital. The property benefits from the recent major expansions and remodel at Sunrise Hospital, now with 834 beds, attracting more patients to the area.

- Prominently situated on Maryland Parkway with excellent visibility and access
- Monument signage available
- Adjacent to Sunrise Hospital and Sunrise Children's Hospital
- Numerous dining, retail and business services nearby
- 4/1,000 parking ratio - covered and uncovered parking available
- Multiple bus transit options along Maryland Parkway



## LEASE RATE

\$2.00/PSF/Month, MG



## SQUARE FEET

±1,234 – ±4,807 RSF

SUITE #	SF	DESCRIPTION
200/220	±4,807 RSF	Currently built out for physical therapy use or office w/bullpen
200	±2,131 RSF	Planned medical office spec suite, under construction
220	±2,676 RSF	Planned medical office spec suite
230	±1,234 RSF	Turn-key medical suite, ideal for primary care, behavioral, medical specialties, health and office uses



# MULTI-TENANT MEDICAL OFFICE BUILDING



2870 S. MARYLAND PARKWAY, LAS VEGAS, NV

**CBRE**

# 3

# Property Overview



**PROPERTY NAME**  
Partell Medical Center  
(Built 1991)



**IDEAL USE**  
Medical



**BUILDING SIZE**  
±29,547 SF



**# OF FLOORS**  
3



**ZONING**  
C-2 (General Commercial)



**SIGNAGE**  
Building signage provides prominent visibility



**ASKING RATE**  
\$2.00/PSF/Month, MG



**PARKING**  
Parking Ratio 4/1,000 with 118 surface parking stalls

4

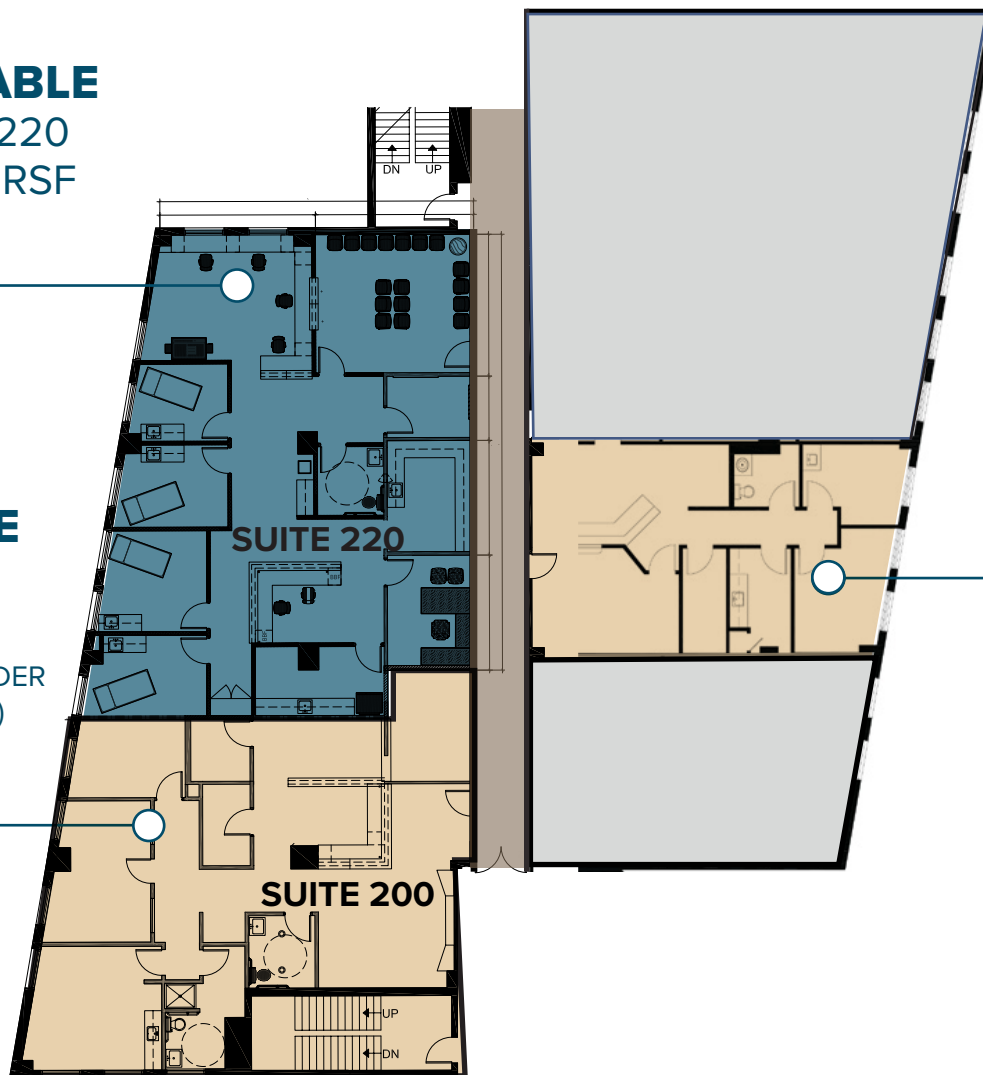
# 2nd Floor

**AVAILABLE**

SUITE 220  
±2,676 RSF

**AVAILABLE**

SUITE 200  
±2,131 RSF  
(MEDICAL SPEC UNDER  
CONSTRUCTION)



Suite 200 and 220 can be  
combined for ±4,807 SF

**360° VIRTUAL  
TOUR**

**AVAILABLE**

SUITE 230  
±1,234 RSF  
(MEDICAL SUITE)

**360° VIRTUAL  
TOUR**

# 5

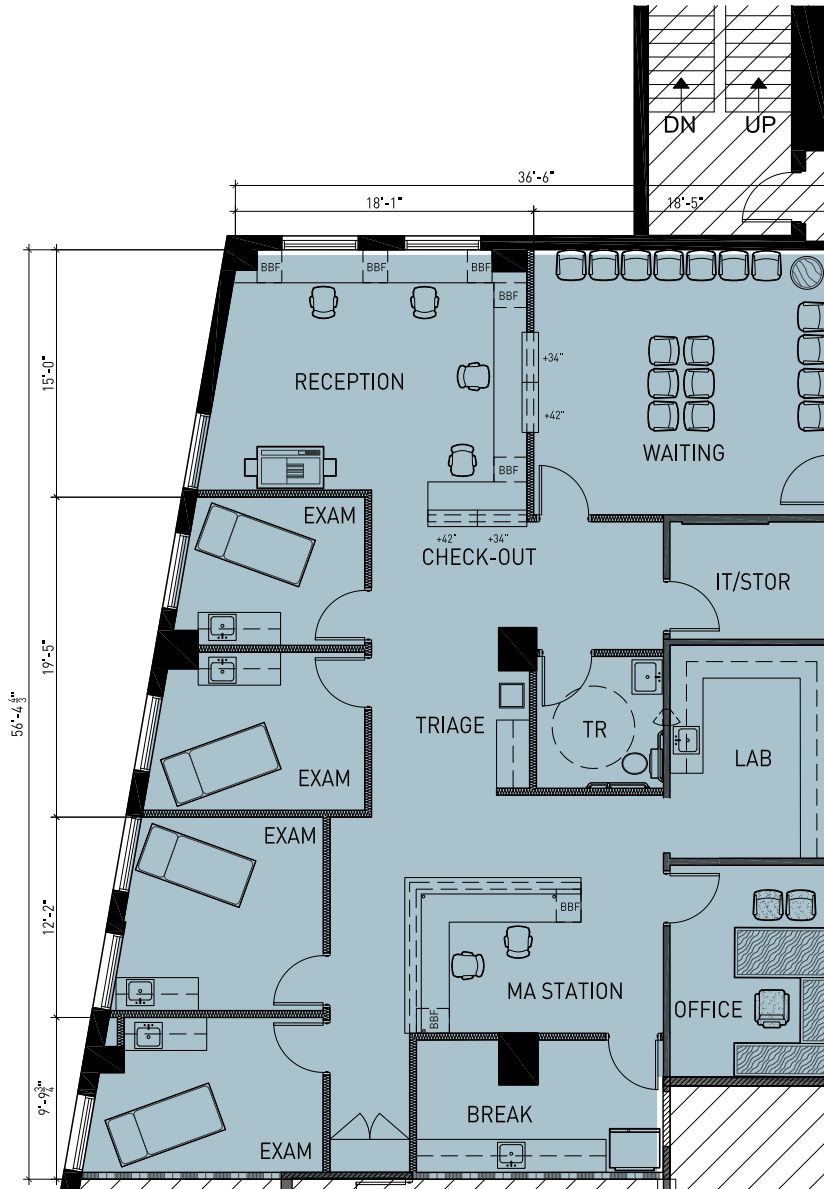
# Suite 220

**AVAILABLE**

SUITE 220

±2,676 RSF

(PROPOSED MEDICAL FLOOR PLAN)



6

# Suite 200

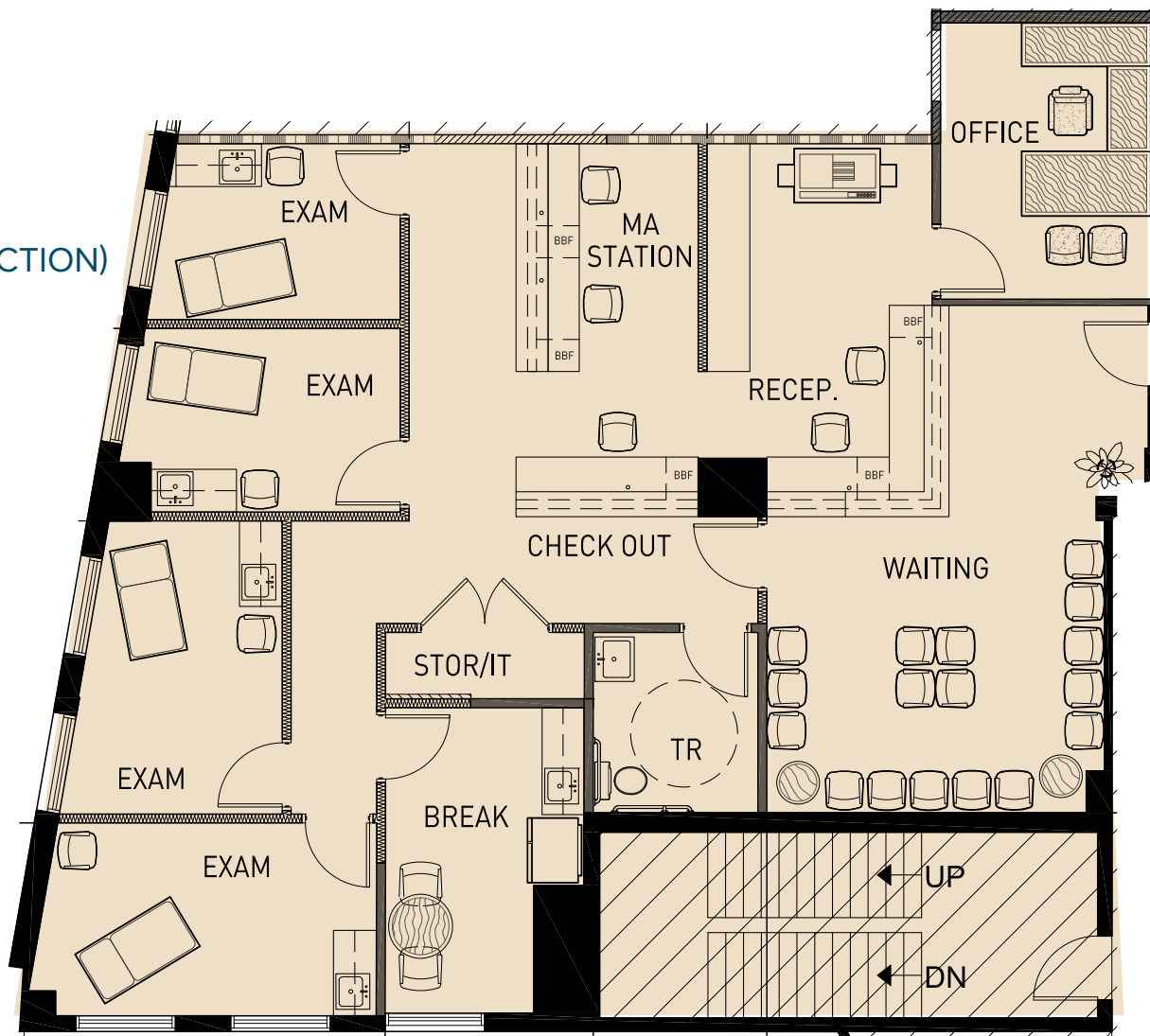
**AVAILABLE**

SUITE 200

±2,131 RSF

(MEDICAL SPEC UNDER CONSTRUCTION)

**360° VIRTUAL TOUR**



7

# Suite 230

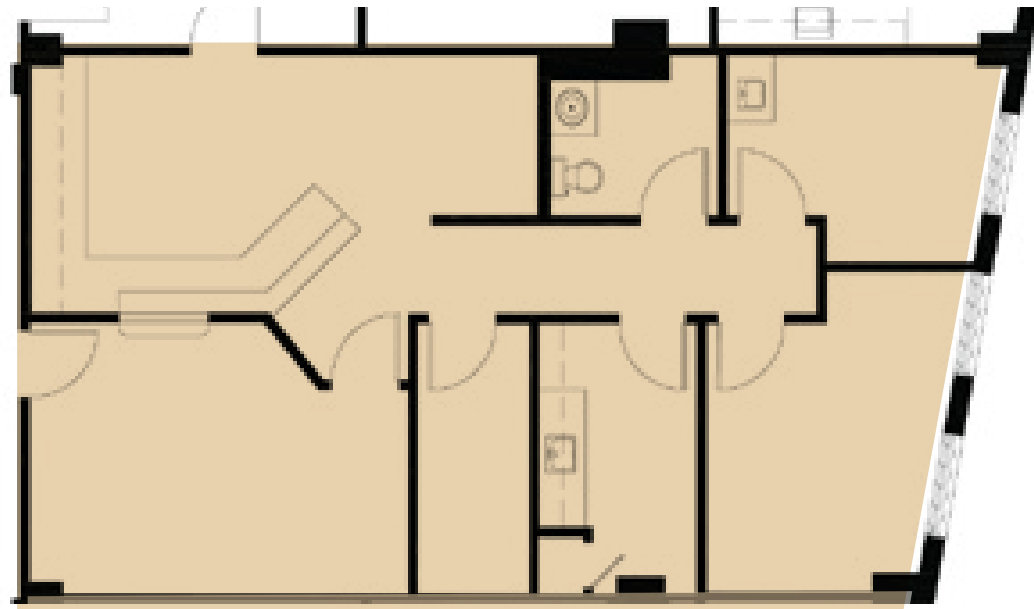
**AVAILABLE**

SUITE 230

±1,234 RSF

(MEDICAL SUITE)

**360° VIRTUAL  
TOUR**

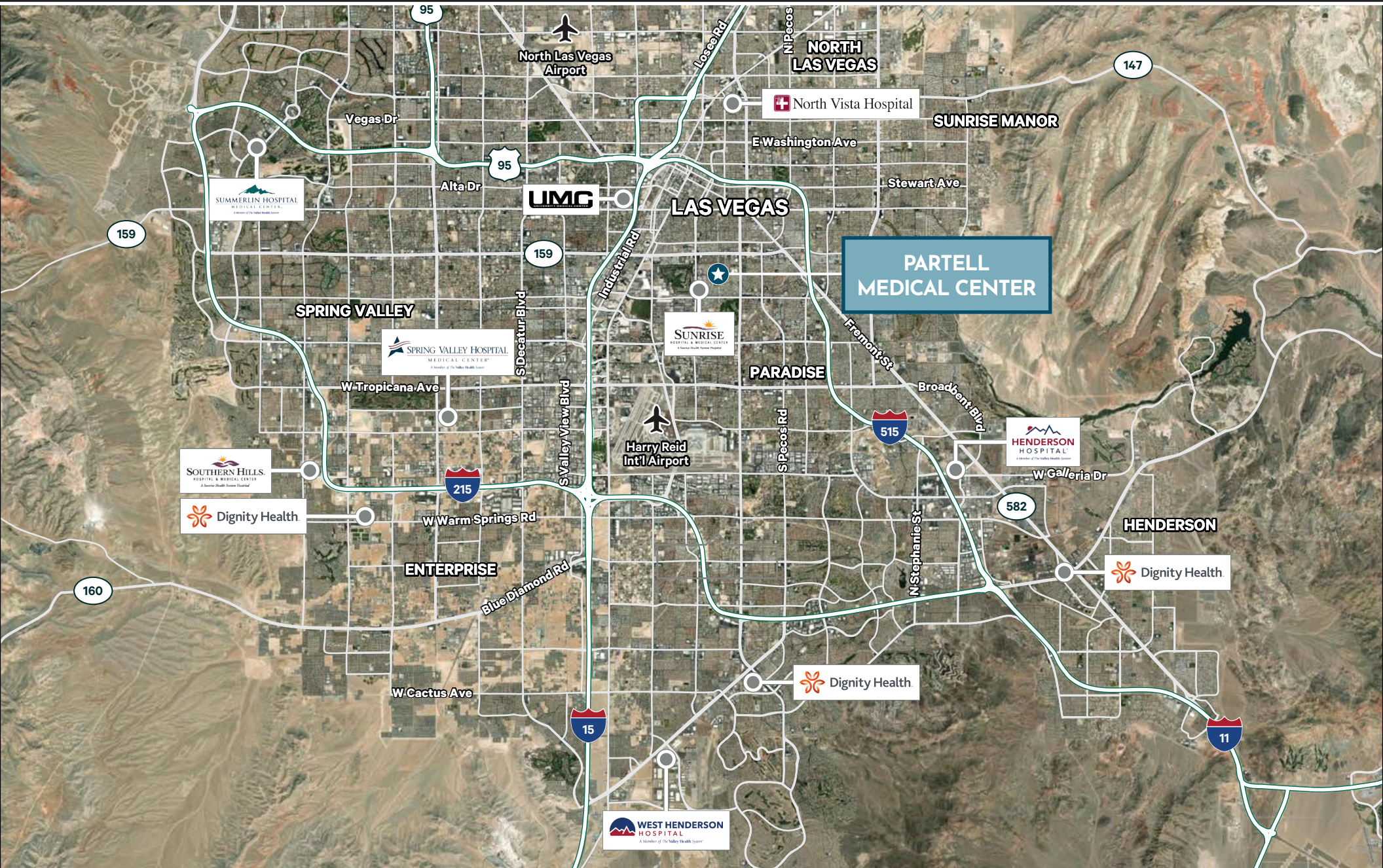








# Hospital Map



# 10

# Area Demographics

	1 Mile	3 Miles	5 Miles
<b>POPULATION</b>			
2023 Population - Current Year Estimate	23,915	179,837	493,818
2028 Population - Five Year Projection	24,337	184,414	503,596
2023-2028 Annual Population Growth Rate	0.35%	0.50%	0.39%
2023 Median Age	38.60	40.30	36.60
<b>HOUSEHOLDS</b>			
2023 Households - Current Year Estimate	10,078	79,251	190,580
2023-2028 Annual Household Growth Rate	0.57%	0.73%	0.63%
<b>HOUSEHOLD INCOME</b>			
2023 Average Household Income	\$63,337	\$58,142	\$60,694
2028 Average Household Income	\$74,521	\$67,558	\$70,557
2023 Median Household Income	\$37,157	\$35,423	\$39,138
2028 Median Household Income	\$42,875	\$39,523	\$44,601
<b>DAYTIME POPULATION</b>			
2023 Daytime Population	31,200	386,215	754,472

The medical services in Las Vegas, NV offer a wide range of healthcare options. Services include primary care physicians, specialists, urgent care centers, hospitals, and medical clinics. Las Vegas is home to several renowned hospitals and medical centers. With a diverse healthcare landscape, Las Vegas ensures access to quality medical services for its population.



## Healthcare Expenditures

(5 Mile Radius)

**\$787M**

Total Annual Healthcare

**\$146M**

Total Annual Medical Services

**\$50M**

Total Annual Dental Care

**\$9M**

Total Annual Eye Care

**\$8M**

Total Annual Lab Test

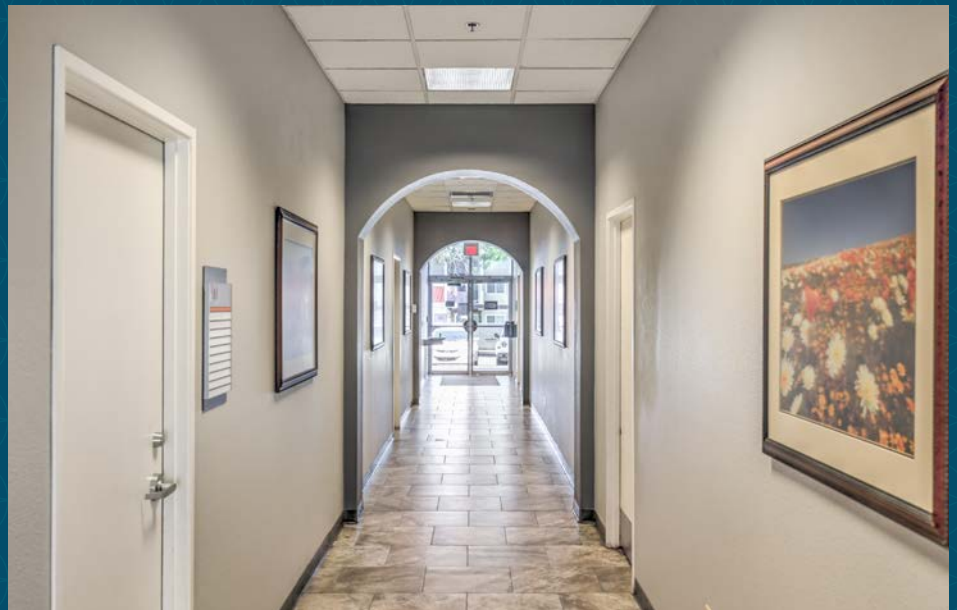
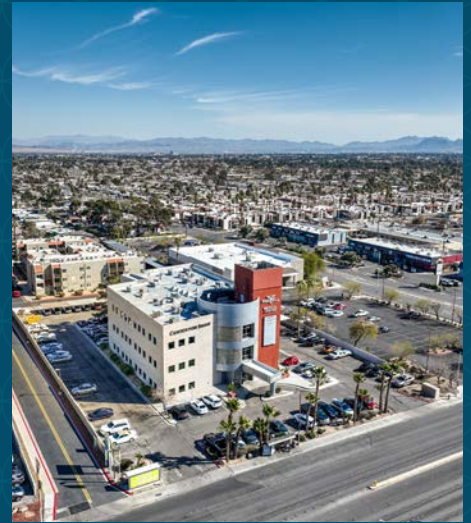
**\$29M**

Total Annual Physician Services



11

# Partell Medical Center



# PARTELL MEDICAL CENTER

2870 S. MARYLAND PARKWAY, LAS VEGAS, NV 89109

FOR LEASE



## CONTACT



VIRTUAL  
TOUR

**MICHAEL K. HSU**  
First Vice President  
Lic. S.51609.LLC  
T +1 702 369 4866  
C +1 702 768 6459  
michael.hsu@cbre.com

**TONYA GOTTESMAN**  
Vice President  
Lic. S.0189043  
T +1 702 369 4882  
C +1 310 612 3592  
tonya.gottesman@cbre.com

**RYAN MARTIN, SIOR, CCIM**  
Senior Vice President  
Lic. BS 0048284  
T +1 702 369 4881  
C +1 702 630 2671  
ryan.martin@cbre.com

**ANTONETTE ROLDA**  
Client Services Specialist  
Lic. S.0199545  
T +1 702 369 4877  
C +1 714 493 0165  
antonette.rola@cbre.com

© 2024 CBRE, Inc. All rights reserved. This information has been obtained from sources believed reliable, but has not been verified for accuracy or completeness. You should conduct a careful, independent investigation of the property and verify all information. Any reliance on this information is solely at your own risk. CBRE and the CBRE logo are service marks of CBRE, Inc. All other marks displayed on this document are the property of their respective owners, and the use of such logos does not imply any affiliation with or endorsement of CBRE. Photos herein are the property of their respective owners. Use of these images without the express written consent of the owner is prohibited. Some content was originally generated by GenAI and modified by the author.

**CBRE**