

FOR LEASE

Retail Space Available

AVAILABLE

- Unit 527-B: ±1,190 SF

LEASE RATE

See Advisors

ZONING

SC-2 | Planned Shopping Center

HIGHLIGHTS

- Establish shopping center anchored by CVS Pharmacy
- Ample customer parking
- Excellent visibility and co-tenancy
- Easy access via Cordova Rd., Don Diego Ave. & Camino de los Marquez
- Nearby retailers include:
 - Trader Joe's
 - O'Reilly Auto Parts
 - Orange Theory
 - Dollar Tree
 - Party City
 - Sports Shops
 - Restaurants/Bakeries
 - State Departments and private offices



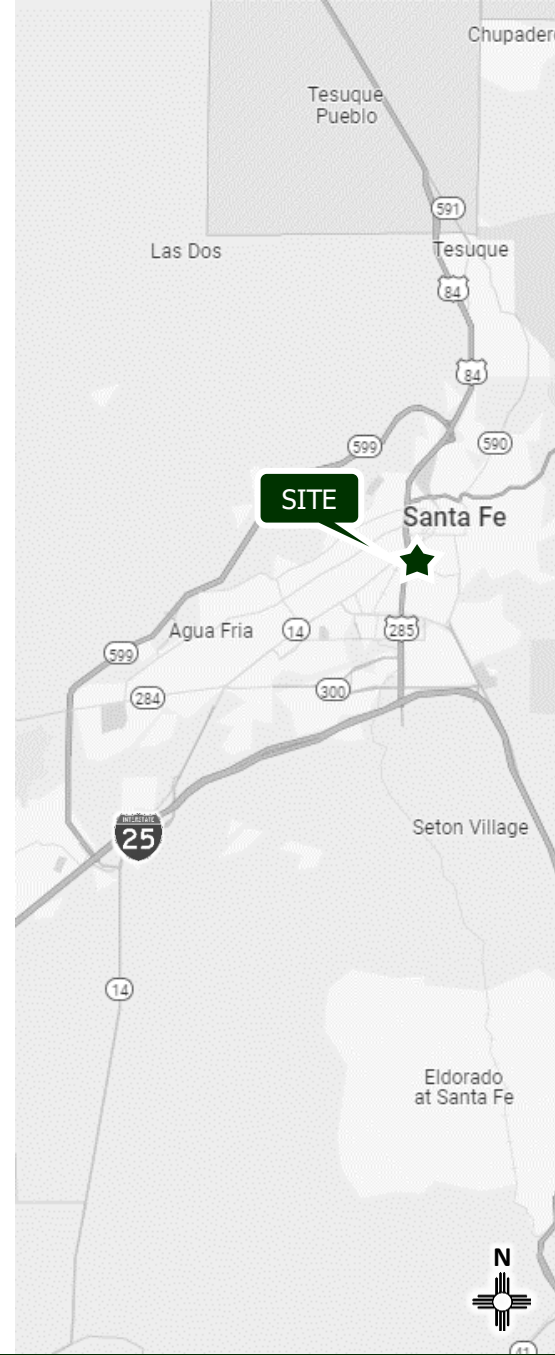
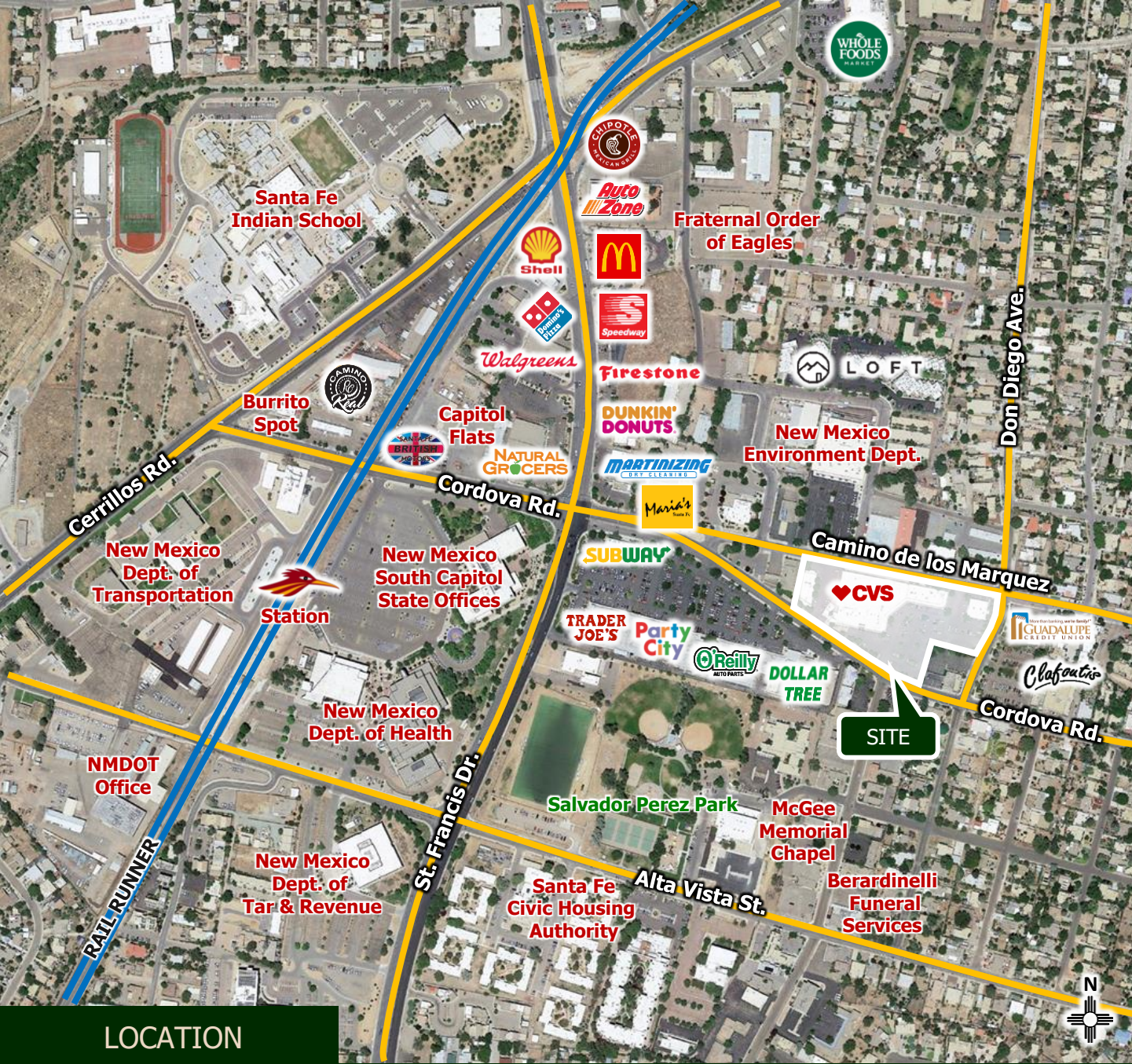
511 Cordova Rd. Santa Fe, NM 87505



505.473.3434 | www.garsagroup.com
418 Cerrillos Rd. | Suite 11 | Santa Fe, NM 87501

Joel Cumplido
505.670.3328
joel@garsagroup.com

Jonathon Rivera
505.913.0957
jonathon@garsagroup.com



LOCATION

FOR LEASE

Retail Space Available
 511 Cordova Rd. Santa Fe, NM 87505

Joel Cumplido 505.670.3328 joel@garsagroup.com
 Jonathon Rivera 505.913.0957 jonathon@garsagroup.com



Unit 527-B
±1,190 SF

Zommies Dog Daycare & Resort

Santa Fe Friends Meeting

Santa Fe Church of the Nazarene

Camino de los Marquez

CVS

Cordova Rd.

The New Baking Company

Rivers Collective Body Art

All Dolled Up Salon & Spa

BIKE & SPORT
santa fe

R.GREENLEAF

Don Diego Ave.

5,814 VPD

9,496 VPD

Luisa St.

Great Little Cars
Since 1995



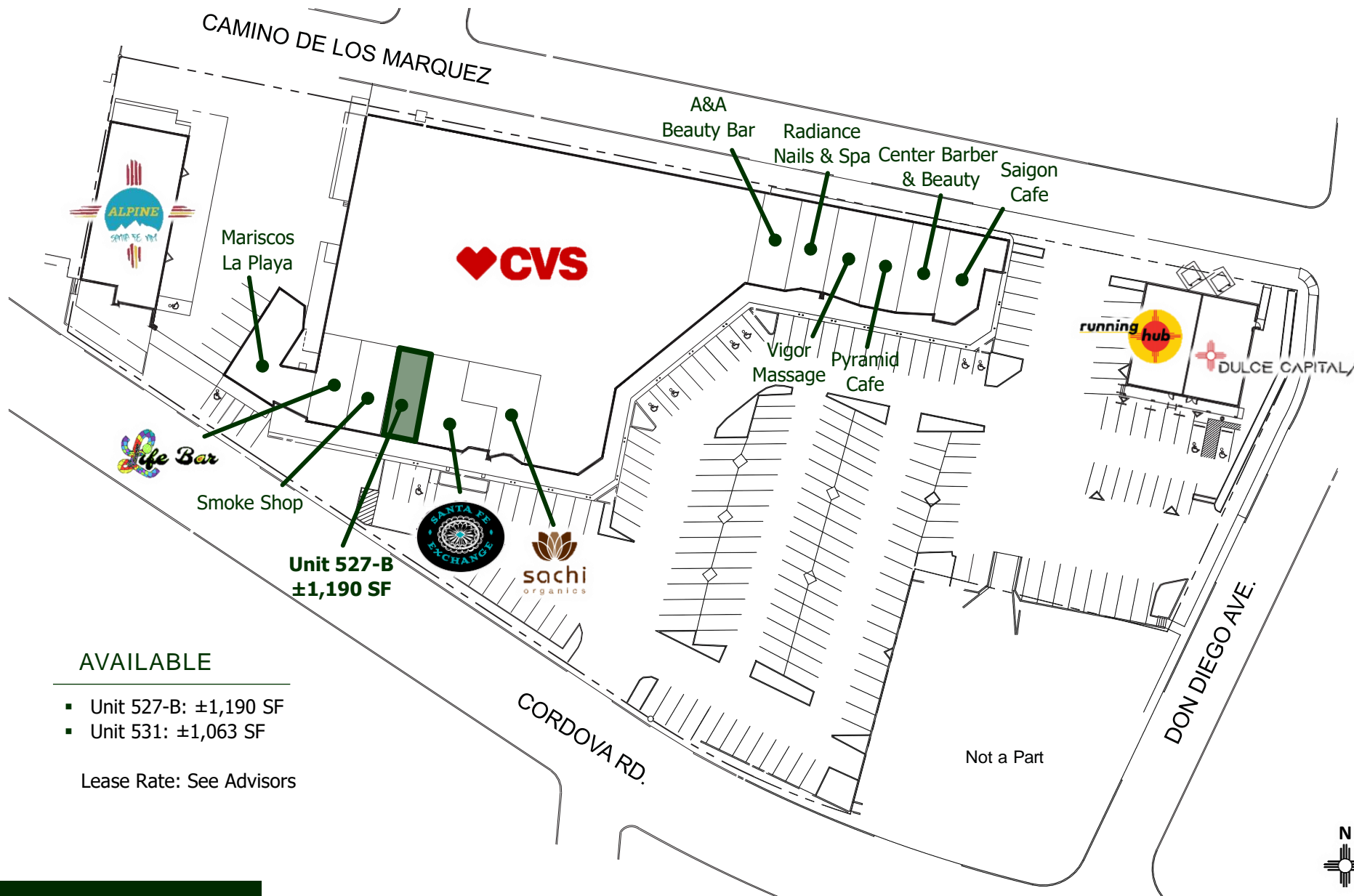
LOCATION

FOR LEASE

Retail Space Available
511 Cordova Rd. Santa Fe, NM 87505

Joel Cumplido
505.670.3328
joel@garsagroup.com

Jonathon Rivera
505.913.0957
jonathon@garsagroup.com



AVAILABLE

- Unit 527-B: ±1,190 SF
- Unit 531: ±1,063 SF

Lease Rate: See Advisors

SITE PLAN

FOR LEASE

Retail Space Available
 511 Cordova Rd. Santa Fe, NM 87505

Joel Cumplido 505.670.3328 joel@garsagroup.com
 Jonathon Rivera 505.913.0957 jonathon@garsagroup.com



PHOTOS

FOR LEASE

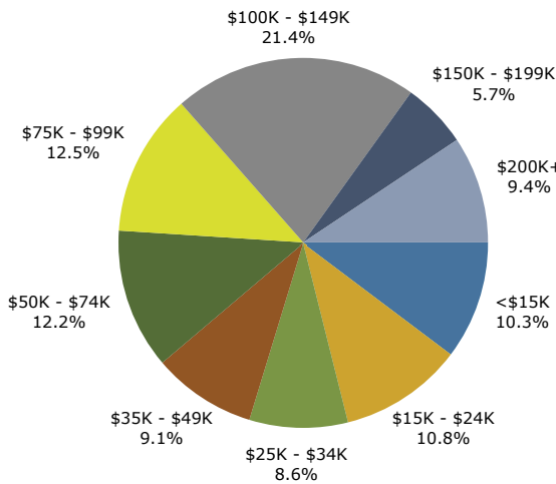
Retail Space Available
511 Cordova Rd. Santa Fe, NM 87505

Joel Cumplido
505.670.3328
joel@garsagroup.com

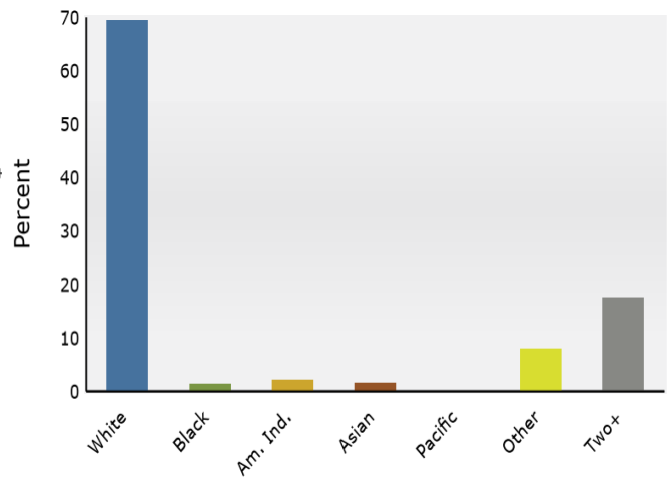
Jonathon Rivera
505.913.0957
jonathon@garsagroup.com

2024 Forecasted by ESRI	1 Mile	3 Mile	5 Mile
Population	10,167	48,439	76,377
Households	5,731	25,127	37,492
Families	2,020	11,070	18,004
Average Households Size	1.72	1.90	2.00
Median Age	54.7	54.0	51.7
Media HH Income	\$72,235	\$79,046	\$78,764
Average HH Income	\$99,079	\$112,636	\$113,519
Total Business	1,859	5,387	6,315
Total Employees	25,359	63,693	74,116

HH Income – 1 mile radius

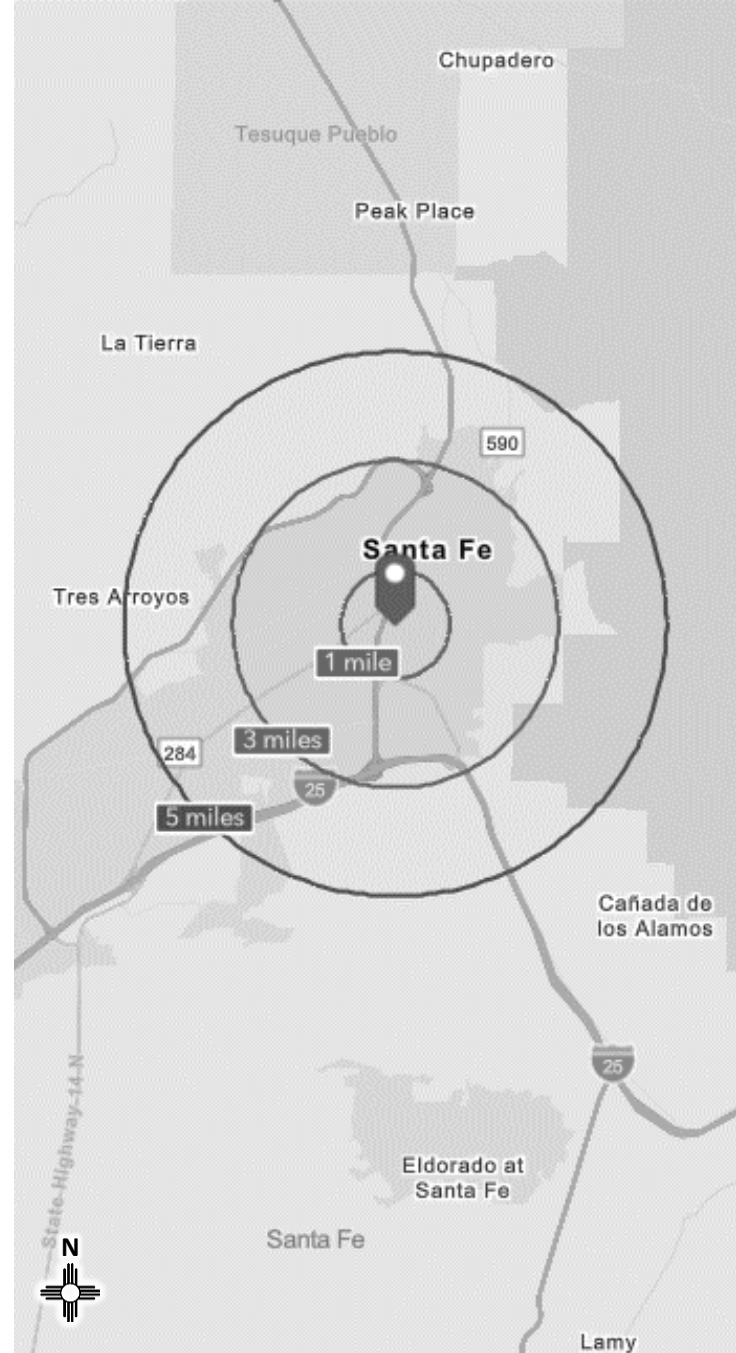


Population by Race – 1 mile radius



2024 Percent Hispanic Origin: 32.4%

The information contained in this flyer is believed reliable. While we do not doubt the accuracy, we have not verified it and make no guarantee, warranty or representation about it. It is your responsibility to independently confirm its accuracy and completeness. Any projection, opinion, assumption or estimated uses are for example only and do not represent the current or future performance of the property. The value of this transaction to you depends on many factors which should be evaluated by your tax, financial, and legal counsel. You and your counsel should conduct a careful independent investigation of the property to determine that it is suitable to your needs.



DEMOGRAPHICS

FOR LEASE

Retail Space Available
511 Cordova Rd. Santa Fe, NM 87505

Joel Cumplido 505.670.3328 joel@garsagroup.com
Jonathon Rivera 505.913.0957 jonathon@garsagroup.com