

# 3585 NATIONAL DRIVE

PLANO, TEXAS 75025

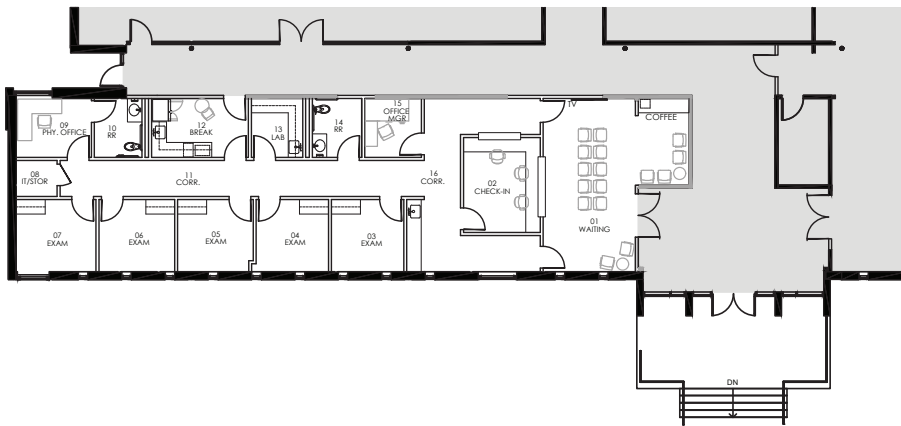
MEDICAL SPACE | FOR LEASE



## PROPERTY HIGHLIGHTS

- 15,000 SF office building
- New construction, built in 2016
- Sam Rayburn Tollway / 121 frontage
- Great visibility & easy access
- 5.0 / 1,000 RSF parking ratio
- Building signage available
- State-of-the-art building technology
- Amenity rich area
- Immediate availability

## FLOORPLAN - 2,149 SF AVAILABLE



## AREA DEMOGRAPHICS

	1 MILE	3 MILES	5 MILES
<b>2019 POPULATION</b>	10,345	121,951	311,811
<b>2024 POPULATION</b>	11,453	136,821	353,033
<b>GROWTH 2019- 2024</b>	10.71%	12.19%	13.22%
<b>2019 TOTAL HOUSEHOLDS</b>	3,887	42,750	116,275
<b>MEDIAN HH INCOME</b>	\$110,268	\$121,145	\$105,811
<b>MEDIAN HH VALUE</b>	\$313,554	\$328,619	\$325,249

COHEN HOWARD  
214.446.4539  
cohen.howard@transwestern.com

JOHN HUFF  
214.237.5010  
john.huff@transwestern.com

