



PHYSICAL THERAPY/
CHIROPRACTIC
/GENERAL OFFICE

FOR LEASE
± 1,580 SF

VENTURA
PROFESSIONAL VILLAGE
725 W. ELLIOT RD
SUITE 103
GILBERT, AZ 85233



COMMERCIAL PROPERTIES INC.

Locally Owned. Globally Connected. CORFAC INTERNATIONAL

TEMPE: 2323 W. University Drive, Tempe, AZ 85281 | 480.966.2301
SCOTTSDALE: 8777 N. Gainey Center Dr., Suite 245, Scottsdale, AZ 85258 | www.cpiaz.com

MATT ZACCARDI
D: 480.966.7625
M: 602.561.1339
Mzaccardi@cpiaz.com

KATY HAUG
D: 480.623.2328
M: 816.808.7347
Khaug@cpiaz.com

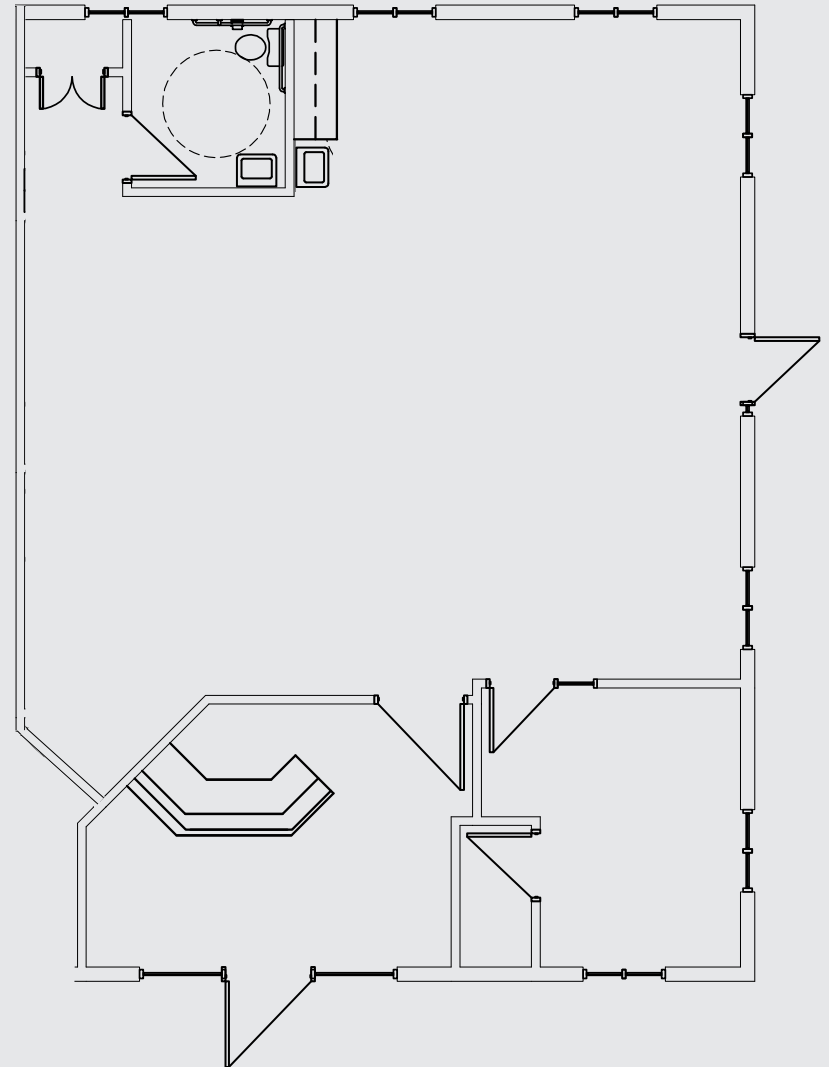


About the Property

ADDRESS	725 W Elliot Rd Suite 103 Gilbert, AZ 85233
LEASE RATE	\$26.00 NNN
CONDO SIZE	±1,580 SF
LAYOUT	Reception/Waiting Area, Exam Room/Office, Kitchenette, Rest Room, & 2 Storage Closets
YEAR BUILT	2005, Remodeled 2022
ZONING	NC, Town of Gilbert
APN	302-32-968
PARKING RATIO	6:1,000 (2 Covered Spaces)

The information contained herein has been obtained from various sources. We have no reason to doubt its accuracy; however, J & J Commercial Properties, Inc. has not verified such information and makes no guarantee, warranty or representation about such information. The prospective buyer or lessee should independently verify all dimensions, specifications, floor plans, and all information prior to the lease or purchase of the property. All offerings are subject to prior sale, lease, or withdrawal from the market without prior notice.

05 06 25



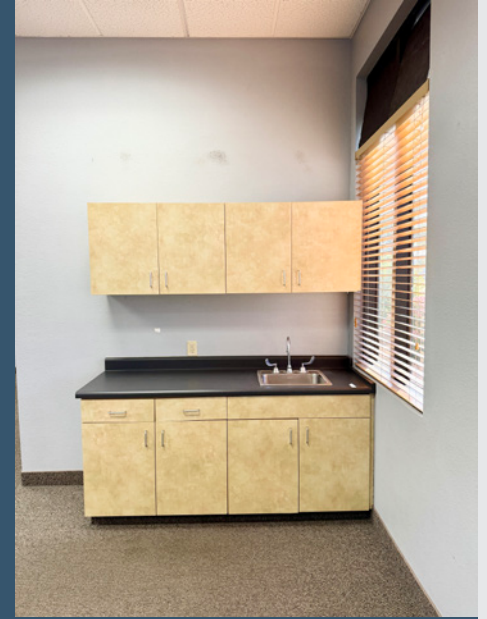
PHYSICAL THERAPY / GENERAL OFFICE AVAILABLE FOR LEASE

Site Plan



PHYSICAL THERAPY / GENERAL OFFICE AVAILABLE FOR LEASE

Property Photos



PHYSICAL THERAPY / GENERAL OFFICE AVAILABLE FOR LEASE

About the Area

