

# SUNRISE COMMERCE PARK

4747 N. NOB HILL ROAD, SUNRISE, FL 33351

## PROPERTY SUMMARY

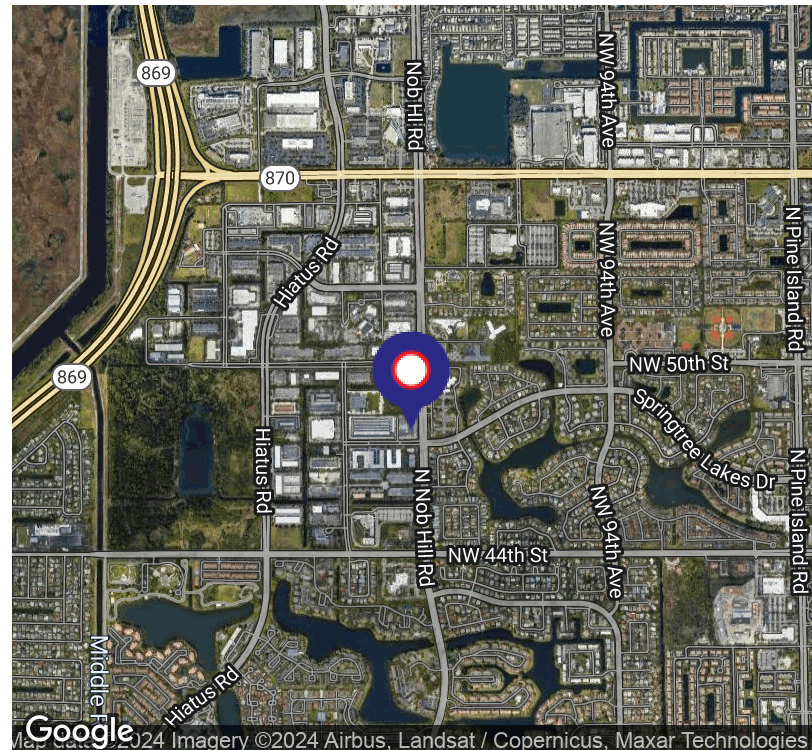


### PROPERTY DESCRIPTION

The Sunrise Commerce Park was built in 1985 is a 34,179 square foot flex, office, and small bay warehouse property with 16'4 foot tall ceilings in I-1 Light Industrial zoning. The property is only minutes from the Sawgrass Expressway just south of Commercial Boulevard with frontage on Nob Hill Road. The unit sizes range from 1,000 square feet up to 5,000 square feet and have 12' x 12' grade level overhead doors in the rear with glass storefront entrances.

### PROPERTY HIGHLIGHTS

- 34,179 SF flex/ office/ warehouse showroom property
- Glass front entrances
- Easy access to the Sawgrass Expressway
- 12' x 12' grade level overhead door in rear of each unit
- 16'4 clear ceiling height in warehouse
- Fronts Nob Hill Road
- Zoned I-1 for Light Industrial



### HALEY PRESSER

Property Manager / Sales Associate  
Direct: 954.491.5505 | Cell: 954.254.5396  
haley@levyrai.com



FOR LEASE

# SUNRISE COMMERCE PARK

4747 N. NOB HILL ROAD, SUNRISE, FL 33351

## ADDITIONAL PHOTOS



### HALEY PRESSER

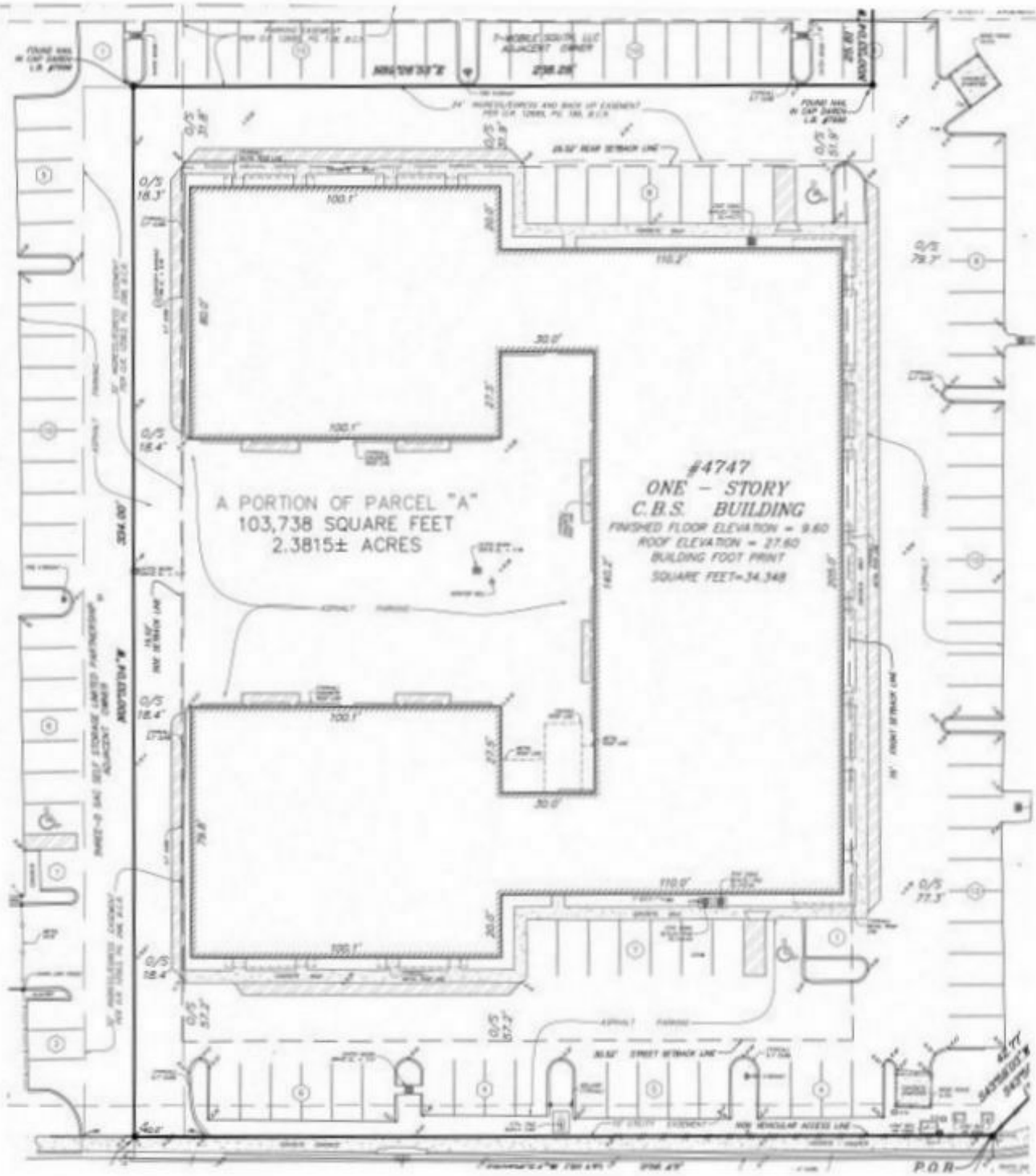
Property Manager / Sales Associate  
Direct: 954.491.5505 | Cell: 954.254.5396  
haley@levyrai.com



# SUNRISE COMMERCE PARK

4747 N. NOB HILL ROAD, SUNRISE, FL 33351

## SITE PLAN



### HALEY PRESSER

Property Manager / Sales Associate  
Direct: 954.491.5505 | Cell: 954.254.5396  
haley@levyai.com

