

# FOR SALE

Office/Warehouse Condo

+/- 1,080 Sq. Ft.

615 SW Biltmore Street

Port St. Lucie, Florida



**Kate Rohlfen**

Office: 772-288-6646 Ext 202

Mobile: 772-834-1752

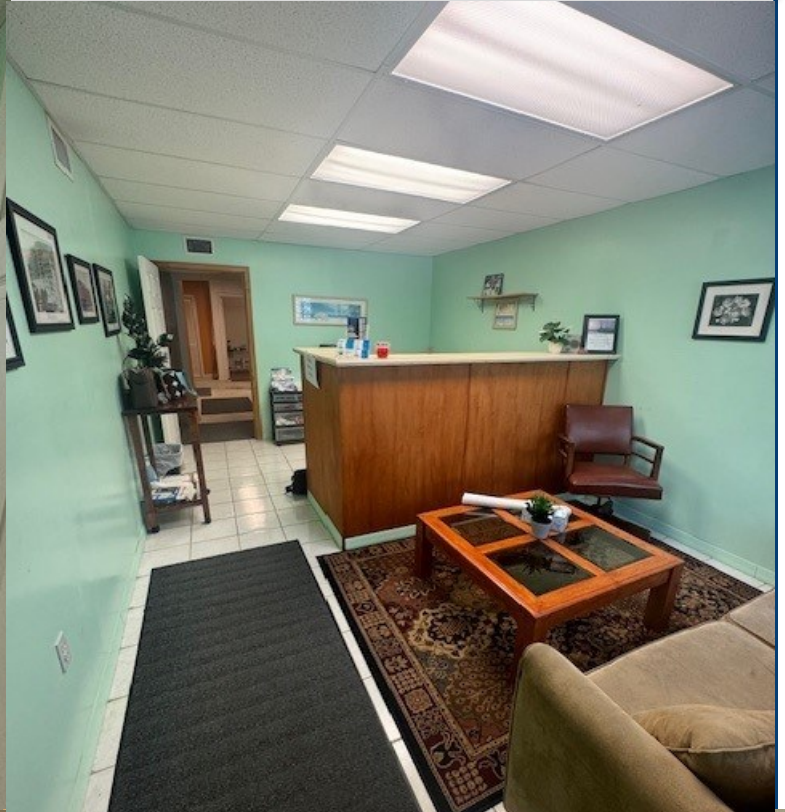
Email: [kate@tccommercialre.com](mailto:kate@tccommercialre.com)

**TREASURE COAST**  
**COMMERCIAL**  
**REAL ESTATE, INC.**  
[www.tcCOMMERCIALre.com](http://www.tcCOMMERCIALre.com)

# PROPERTY INFORMATION

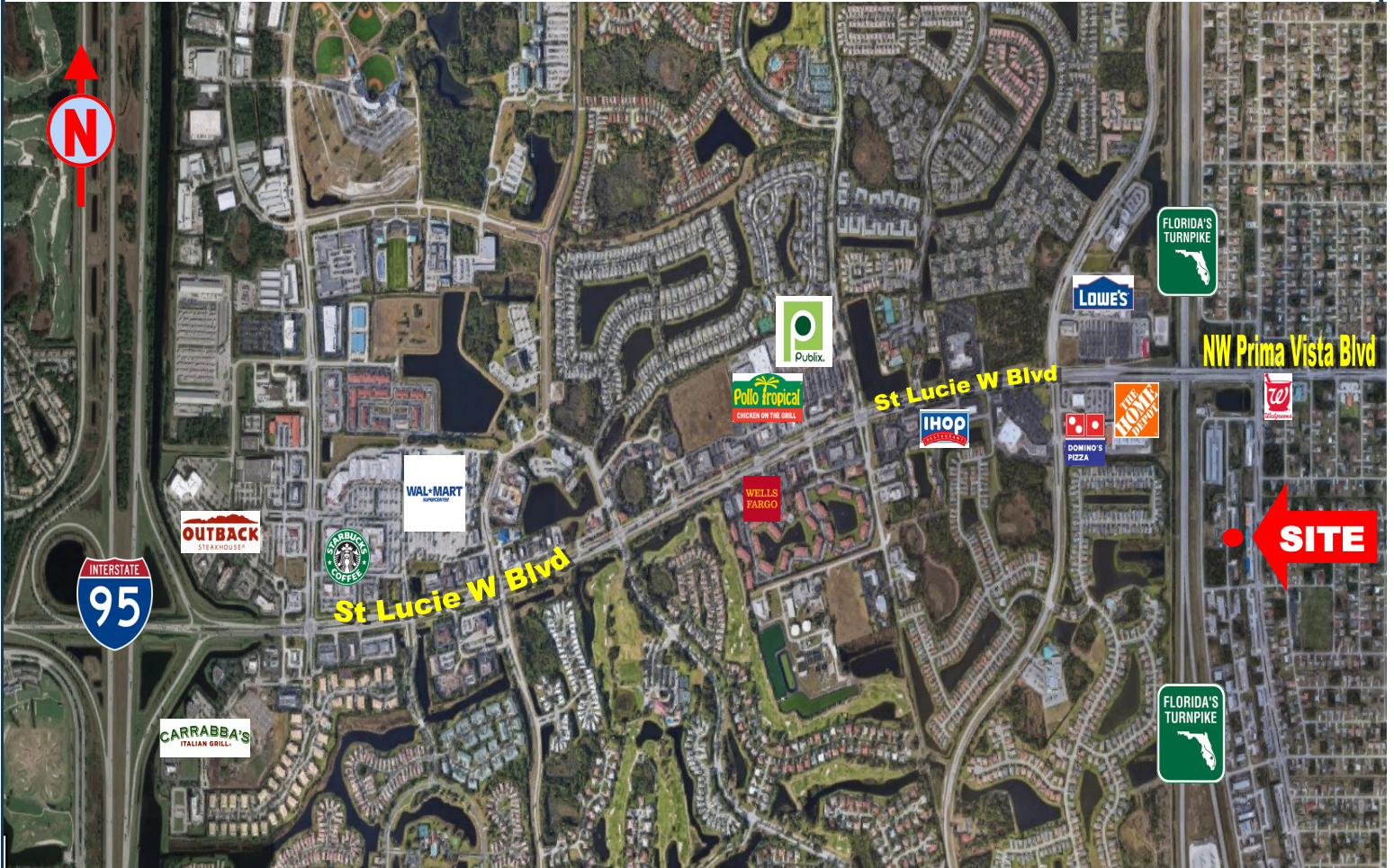
<b>ADDRESS:</b>	615 SW Biltmore Street, Port St. Lucie, FL
<b>LOCATION:</b>	On west side of SW Bayshore Blvd between St. Lucie W Blvd and Crosstown Parkway
<b>UNIT SIZE:</b>	+/- 1,080 Sq. Ft. - Ground Floor
<b>PRICE:</b>	\$307,800.00 or \$285.00 per Sq. Ft.
<b>YEAR BUILT:</b>	2006
<b>ZONING:</b>	Industrial Condo / Warehouse
<b>TAXES:</b>	\$3,108.27 (2023)
<b>COMMENTS:</b>	<ul style="list-style-type: none"><li>• Located in the Biltmore Condominium Business Park</li><li>• Easy access to the Florida Turnpike and I-95</li><li>• Unit includes separate office, overhead door, open warehouse space.</li></ul>

# INTERIOR PHOTOS





# MAP



729A Colorado Avenue · Stuart, Florida · 772-288-6646

**TREASURE COAST**  
COMMERCIAL  
REAL ESTATE, INC.  
[www.tcCOMMERCIALre.com](http://www.tcCOMMERCIALre.com)