

THE retail CONNECTION



# 2525

MCKINNON

---

2525 MCKINNON ST., DALLAS, TEXAS 75201

# A BRAND NEW DAY AT 2525 MCKINNON

## BUILDING HIGHLIGHTS

- Tenant Lounge, Conference Center, and Spec Suites coming Q3 2025
- 112,017 SF
- Class A Office Tower
- 3:1,000 Parking Ratio
- Direct Elevator Access from Parking Garage to Office Floors
- Dramatic Views of Uptown & CBD
- On-Site Security
- Excellent location adjacent to The Swexan Hotel, The Crescent, The Ritz, and McKinney & Olive
- Easy Access to Dallas North Tollway

# 240

RESTAURANTS WITHIN  
1 MILE

# 233

RETAIL STORES WITHIN  
1/2 MILE

## NEARBY RESTAURANTS

1. Saint Ann, Mercat Bistro
2. Happiest Hour, Te Deseo
3. Taco Lingo, Creamistry, Tom Thumb, The Henry, North Italia, Royal 38, Rush Bowls
4. Taqueria La Ventana, Meso Maya, El Fenix
5. Isabelle's, Stillwell's, Babou's
6. Cava
7. Haywire
8. STK
9. Miriam Cocina
10. Perry's Steakhouse, Yardbird
11. Mexican Sugar, Mixt, Feng Shui, Starbucks, Del Frisco's, Doc B's, Leela's Wine Bar
12. Fearing's
13. Potbelly, Pei Wei, Smashburger, Snap Kitchen, Pressed Juicery
14. Shake Shack, East Hampton Sandwich Co
15. Moxie's Grill, Ascension Coffee, The Capital Grille, Starbucks, Sixty Vines, Nobu
16. Ocean Prime, White Rock Coffee, Flower Child
17. Truluck's
18. Whole Foods
19. Uchi/Uchiba
20. Mi Cocina
21. Magnolias Sous Le Pont
22. Elephant East, Poco Fiasco, La Rue Perdue, Harwood Arms
23. Dolce Riviera



15 MIN  
TO LOVE FIELD  
AIRPORT

23 MIN  
TO DFW INTL  
AIRPORT

23

HOUSTON ST

VICTORY AVE

AMERICAN  
AIRLINES CENTER





  
**2525**  
MCKINNON

**KLYDE  
WARREN**

**DALLAS  
MUSEUM  
OF ART**

**NASHER  
SCULPTURE  
GARDEN**

**THE PEROT  
MUSEUM**









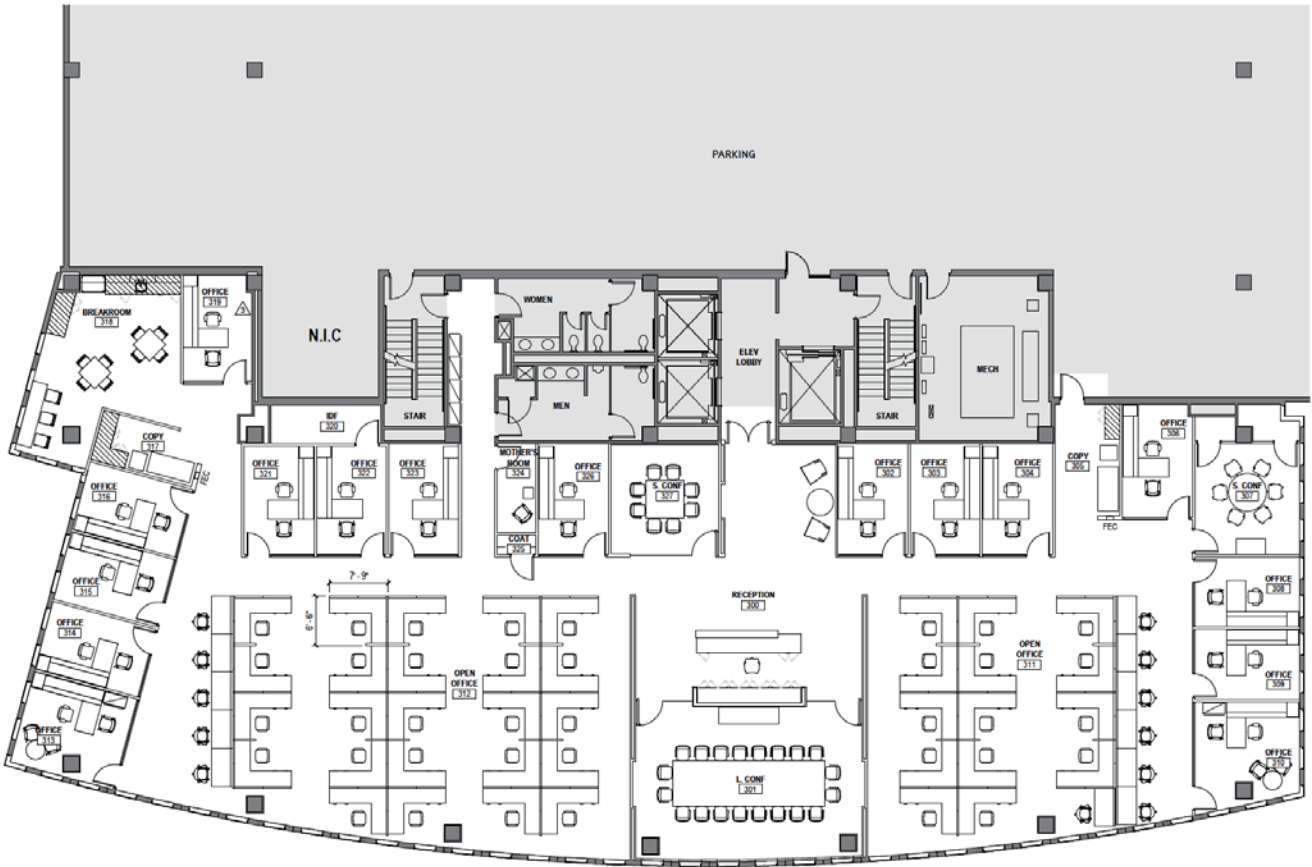




# SUITE 300

10,858 RSF

AVAILABLE NOW







SUITE 520

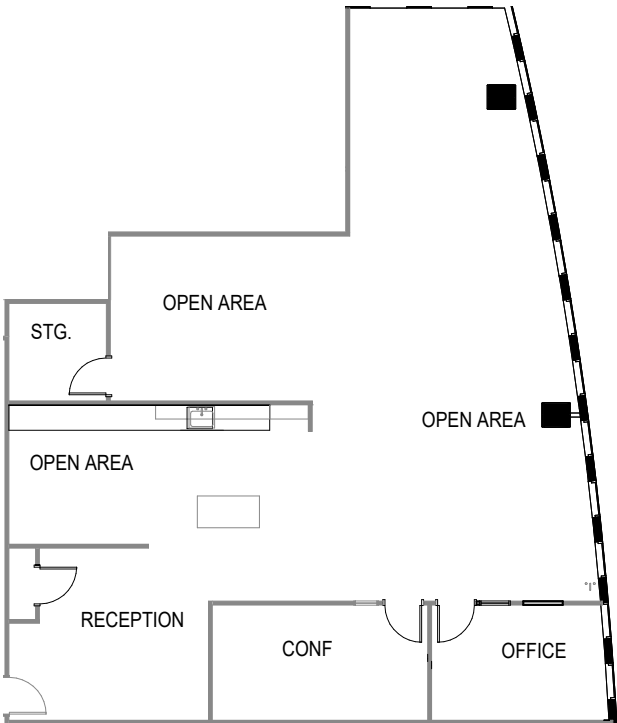
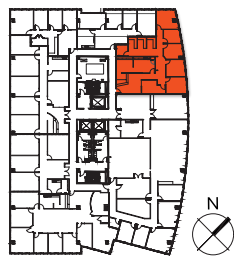


SUITE 520



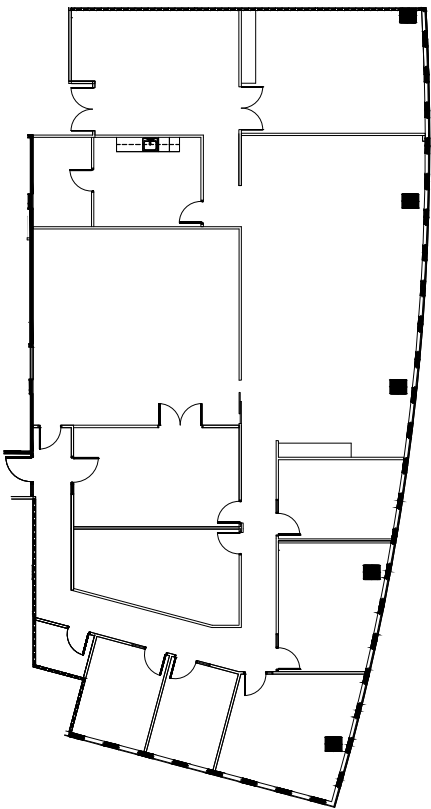
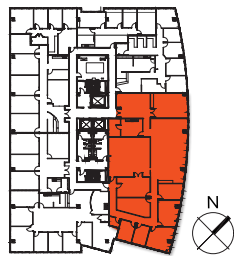
# SUITE 520

2,524 RSF



# SUITE 530

6,498 RSF





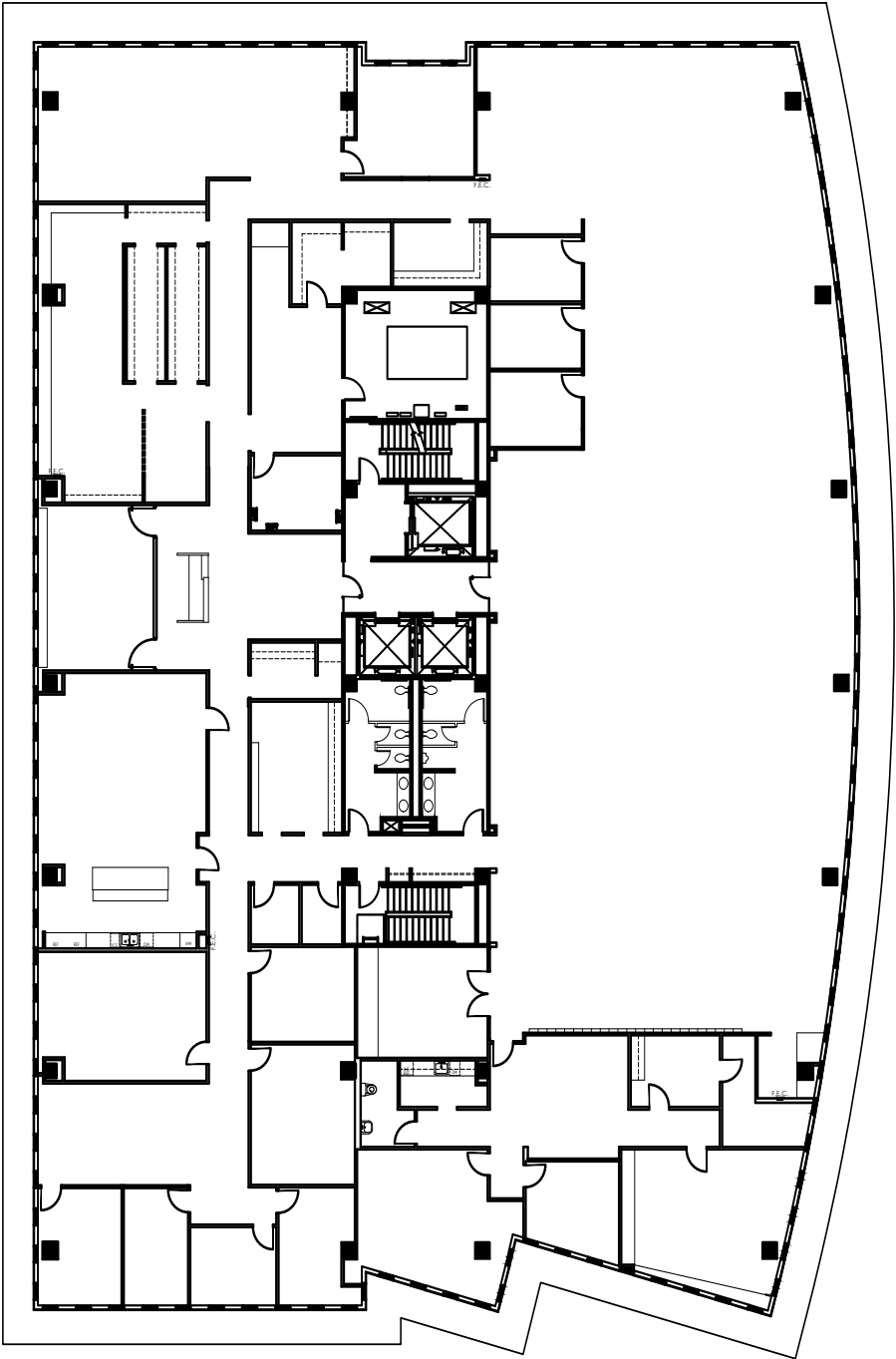
SUITE 800



# SUITE 800

20,160 RSF

AVAILABLE NOW





TENANT SIGNAGE HERE

## LEASING INFORMATION

### MATT SCHENDLE

972 663 9634

[matt.schendle@cushwake.com](mailto:matt.schendle@cushwake.com)

### CARRIE HALBROOKS

972 663 9887

[carrie.halbrooks@cushwake.com](mailto:carrie.halbrooks@cushwake.com)



©2023 Cushman & Wakefield. All rights reserved. The information contained in this communication is strictly confidential. This information has been obtained from sources believed to be reliable but has not been verified. NO WARRANTY OR REPRESENTATION, EXPRESS OR IMPLIED, IS MADE AS TO THE CONDITION OF THE PROPERTY (OR PROPERTIES) REFERENCED HEREIN OR AS TO THE ACCURACY OR COMPLETENESS OF THE INFORMATION CONTAINED HEREIN, AND SAME IS SUBMITTED SUBJECT TO ERRORS, OMISSIONS, CHANGE OF PRICE, RENTAL OR OTHER CONDITIONS, WITHDRAWAL WITHOUT NOTICE, AND TO ANY SPECIAL LISTING CONDITIONS IMPOSED BY THE PROPERTY OWNER(S). ANY PROJECTIONS, OPINIONS OR ESTIMATES ARE SUBJECT TO UNCERTAINTY AND DO NOT SIGNIFY CURRENT OR FUTURE PROPERTY PERFORMANCE.