

For Lease

Amelia Business Park

Kendall Abbott Drive. Amelia Courthouse, VA 23002

Industrial Development

4,000 - 8,000 +/- SF Available

**Multi-Building
Industrial Park**



Parker Hall

(804) 339-7639

parker@ccrealtyllc.com

Terry Earnest, CCIM

(804) 744-9290

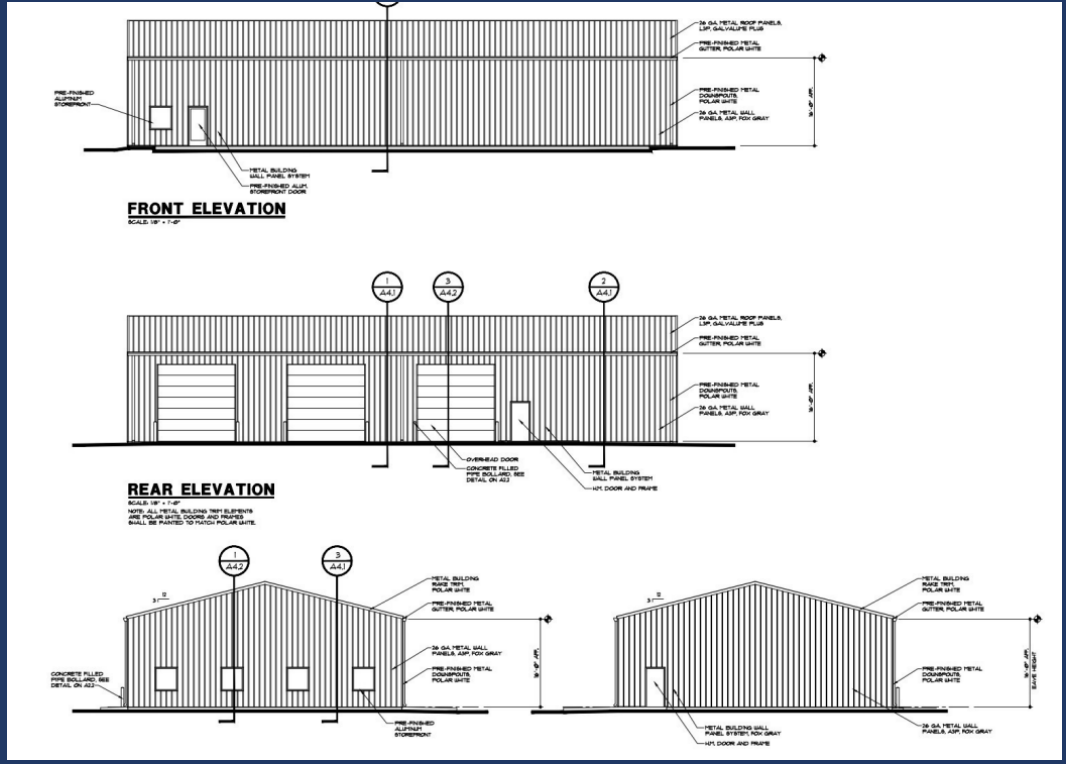
terry@ccrealtyllc.com

Chesterfield Commercial Realty

5001 West Village Green Drive, Suite 203 | Midlothian, VA 23112

Property Details

- 5,000 +/- SF Space Available
- 4,000 – 8,000 +/- SF Space Available Fall 2024
- New Construction
- M-2 Heavy Industrial Zoning
- Ceiling Heights: 16-24'
- Drive-In Doors: 14'x14'
- Multi-Building Business Park
- Outside Storage Area
- LED Lighting
- ADA Restrooms
- County Water and Sewer
- Call Agent For Lease Rates
- Minutes away from Route 288 off of Highway 360



DISCLAIMER: This information was obtained from sources deemed reliable; however, no warranty is made to the accuracy thereof.

360

360

**5,000 +/- SF
Available**

Leased

Leased

Leased

Leased

Leased

Leased

Leased

Leased

Self-Storage

**4,000 - 8,000 +/- SF
Available Fall 2024**

Leased

Amelia County

- Less than 20 miles to Route 288
- Adjacent to Route 360
- Rapidly developing county with over 45% growth in the past 10 years
- Easy connectivity to Downtown Richmond, I-95, and I-64
- 15 miles from western Chesterfield County which is growing at nearly a 2% annual growth rate
- Easily accessible transportation system
- Favorable Amelia County tax rates

