 **JLL** SEE A BRIGHTER WAY

For lease

600 Parsippany Road | Parsippany | NJ
30,760 RSF Office Available

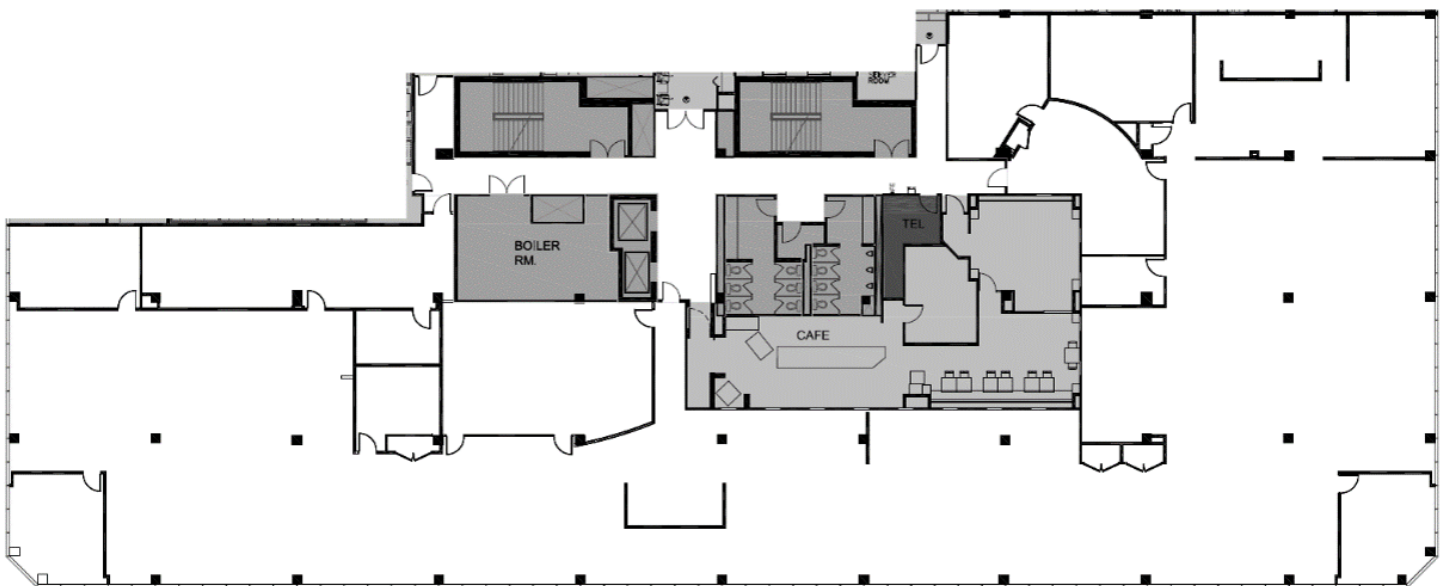
600 Parsippany Road | Parsippany | NJ

Floor	Size
Partial 3rd	18,000 SF
Partial 2nd	5,429 SF
Partial 2nd	4,650 SF
Partial 2nd	2,681 SF
Partial 2nd LEASED	2,305 SF

Specifications

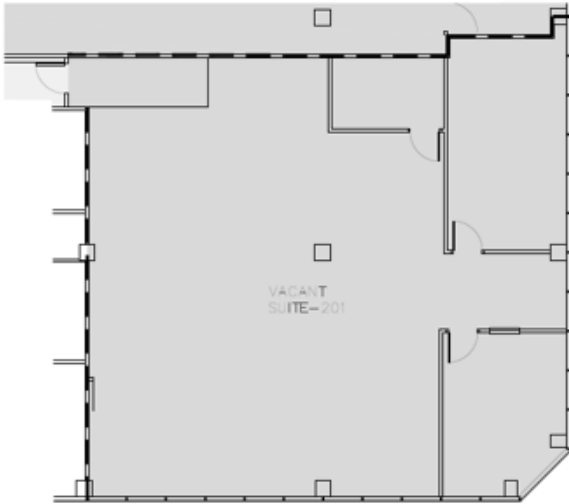
- Stable and reputable ownership
- Full-service cafeteria with outdoor seating area
- Renovated lobby and common areas
- Immediate access to Interstates 287, 80 & 280 and Route 10, 202 & 46

3rd Floor 18,000 SF



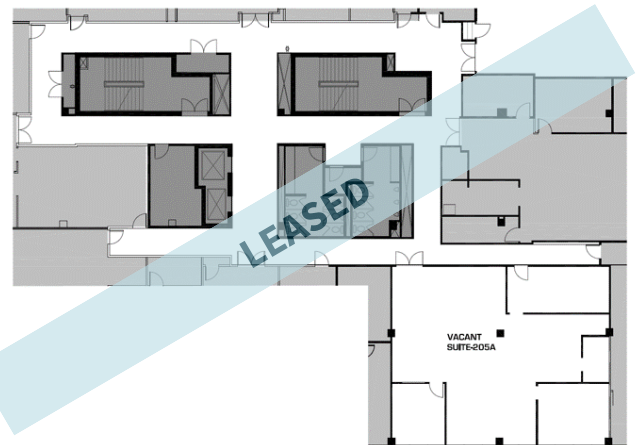
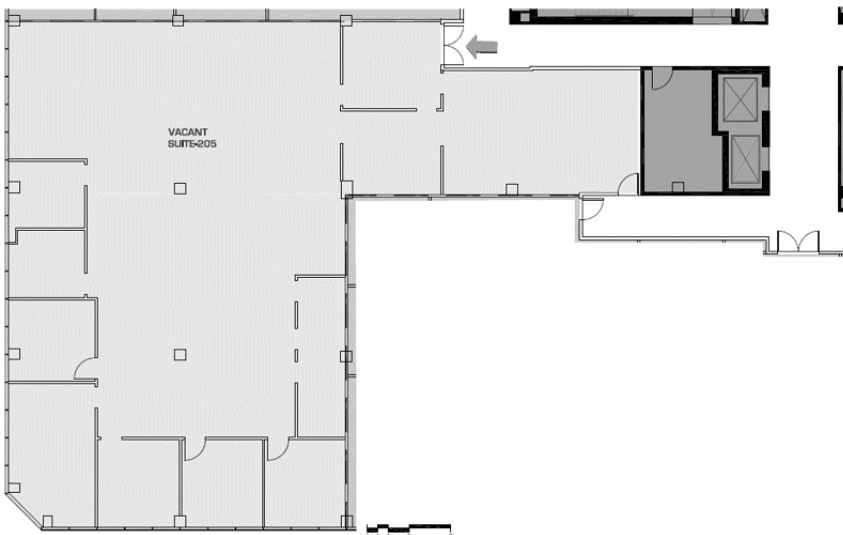
2nd Floor Suite 201
2,681 SF

2nd Floor Suite 203
4,650 SF



2nd Floor Suite 205
5,429 SF

2nd Floor Suite 205A
2,305 SF



Area Map



Frank D. Recine
 Executive Managing Director
 frank.recine@jll.com
 +1 973 829 4738

Alex Friedenberg
 Associate
 alex.friedenberg@jll.com
 +1 908 531 0089