

AVAILABLE FOR LEASE
10.91 ACRES OF PARKING



10.91 ACRES OF PARKING AVAILABLE FOR LEASE

10490 GANDY BLVD N. | ST. PETERSBURG, FL 33702



LEE & ASSOCIATES
TAMPA BAY



PROPERTY OVERVIEW

TOTAL ACRES: 10.91 - Can be Divided

ZONING: CG (Commercial General) - Allows for Outside Vehicle/Truck/Trailer Parking

LEASE TERM: Flexible Lease Terms

SITE: Fenced, Lit, Paved
24 Hour Security Night Patrols

AVAILABLE: Immediately

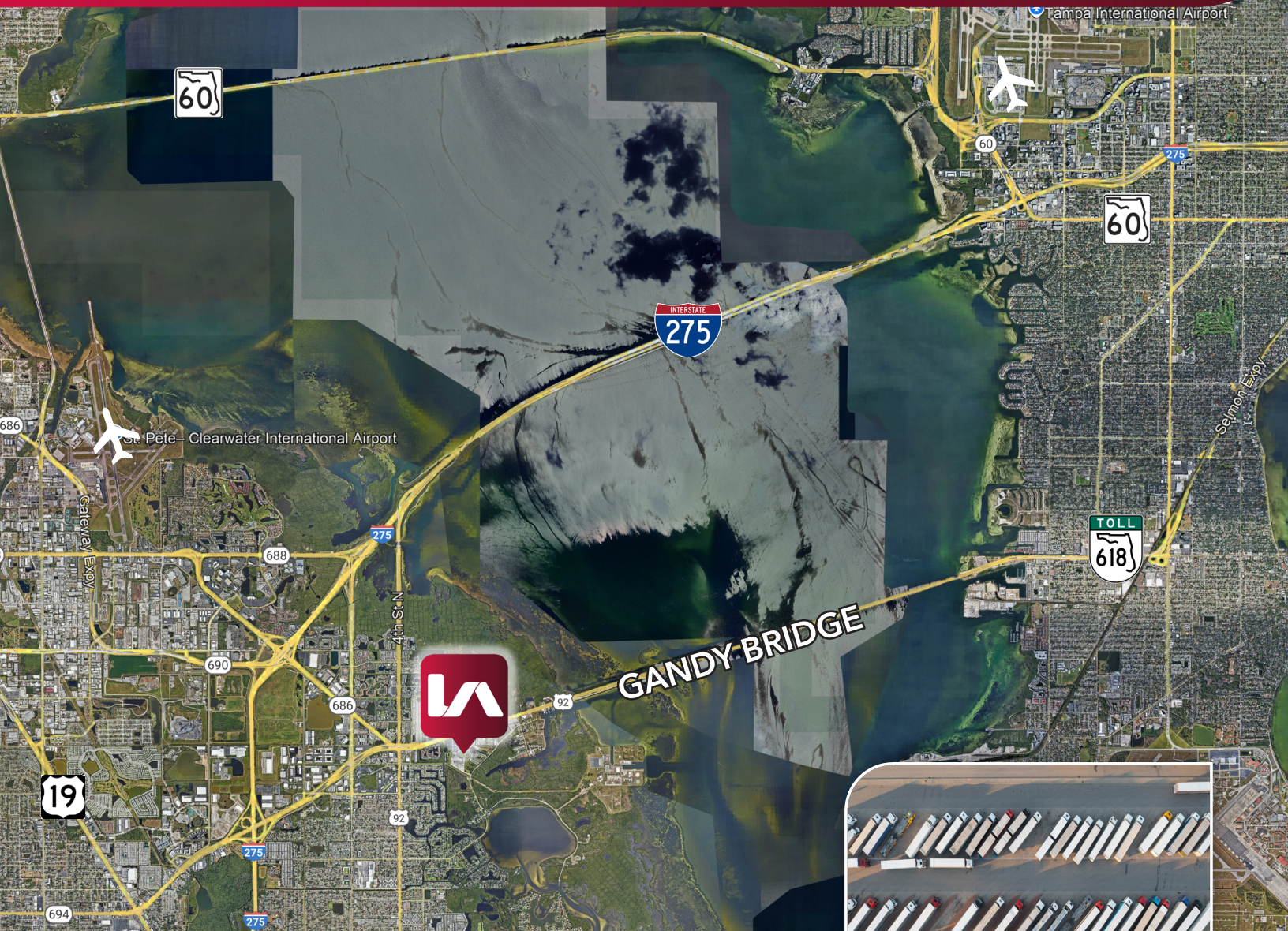


10.91 ACRES OF PARKING AVAILABLE FOR LEASE

10490 GANDY BLVD N. | ST. PETERSBURG, FL 33702



LEE & ASSOCIATES
TAMPA BAY



LOCATION OVERVIEW

- FEATURES:**
- Ideal for logistics, storage, or fleet parking
 - Prime location with excellent access from Gandy Blvd, San Martin, and I-275
 - Fully fenced, illuminated paved site with a flexible layout to fit your needs
 - Three water sources, including one high-volume supply

DISTANCES: I-275..... 2.5 Miles
U.S. Hwy. 19..... 4.0 Miles





**LEE &
ASSOCIATES**

COMMERCIAL REAL ESTATE SERVICES
TAMPA BAY

For more information reach out to:

JULIA SILVA, SIOR

813 230 8008

jsilva@lee-associates.com

JESSICA MIZRAHI, SIOR

813 804 0886

jmizrahi@lee-associates.com

BEN EWERS

352 362 8535

bewers@lee-associates.com



LEE & ASSOCIATES | TAMPA BAY

400 N. ASHLEY DR. SUITE 920

TAMPA, FL 33602

The information and details contained herein have been obtained from third-party sources believed to be reliable, however, Lee & Associates has not independently verified its accuracy. Lee & Associates makes no representations, guarantees, or express or implied warranties of any kind regarding the accuracy or completeness of the information and details provided herein, including but not limited to, the implied warranty of suitability and fitness for a particular purpose. Interested parties should perform their own due diligence regarding the accuracy of the information. The information provided herein, including any sale or lease terms, is being provided subject to errors, omissions, changes of price or conditions, prior sale or lease, and withdrawal without notice. Third-party data sources: CoStar Group, Inc. and Lee Proprietary Data. © Copyright 2019 Lee & Associates all rights reserved.