

RETAIL PROPERTY



FOR LEASE

2128 E BIJOU STREET & IOWA AVENUE
COLORADO SPRINGS, CO 80909



COLE UNDERWOOD

Broker Associate

Direct: (719) 200-4610

cole@coleunderwood.com



4272 Promenade Drive Suite 100
Colorado Springs, CO 80920

PROPERTY INFORMATION

Lease Rate:	\$16.75 NNN
Rentable Area:	1,886 SF
Land Area:	0.24 AC
Zoning:	MX-L
Parking Ratio:	20 Spaces/10 Ratio
Year Built:	1959

PROPERTY DESCRIPTION

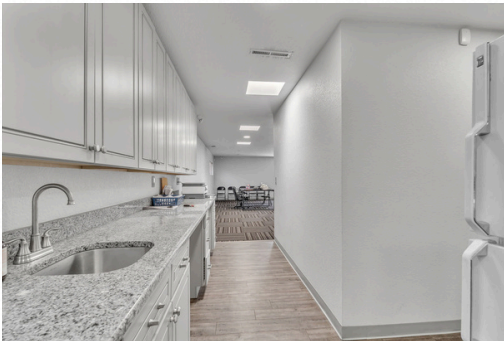
Great free standing building near Platte and Union. Property is zoned MX-L and has a fully fenced in storage yard. Plenty of parking on the property and easy access to many major roadways in the area. Building is in move in condition, has plenty of office space with small break area, and warehouse space leading to the storage yard.

PROPERTY HIGHLIGHTS

- Easy Access near Platte & Union
- Building is in Move in Condition
- Fully Fenced Storage Yard



PROPERTY PHOTOS



PROPERTY MAP

