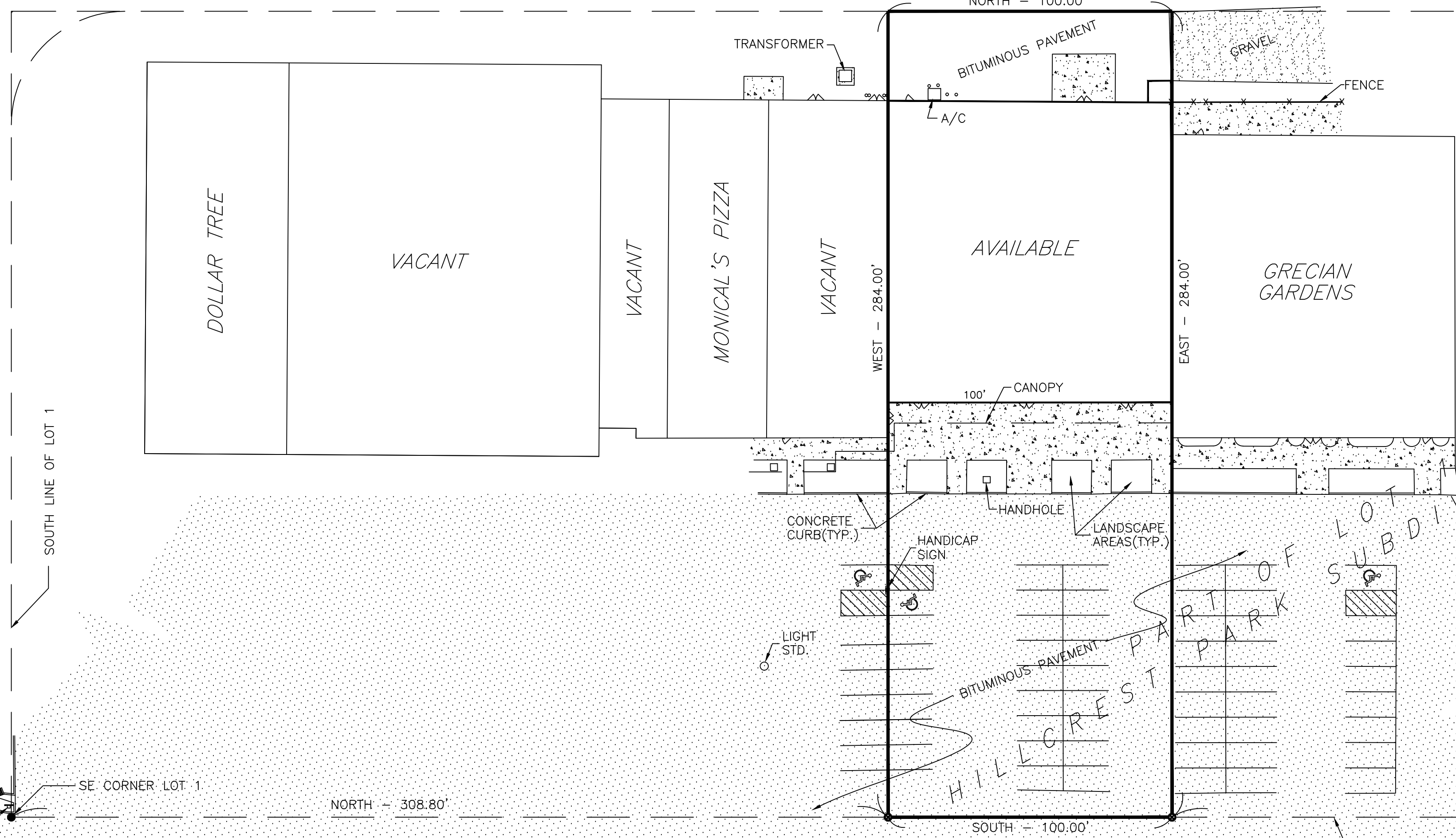




HILLCREST DRIVE



LEGAL DESCRIPTION

PART OF LOT 1 OF HILLCREST PARK SUBDIVISION, AS LAID OUT ON PART OF THE SOUTH HALF OF SECTION 29, TOWNSHIP 11 NORTH, RANGE 9 EAST OF THE FOURTH PRINCIPAL MERIDIAN, AS RECORDED IN PLAT BOOK "W", AT PAGE 116 ON JULY 22, 1958, SITUATED IN THE COUNTY OF PEORIA AND STATE OF ILLINOIS, MORE PARTICULARLY DESCRIBED AS FOLLOWS: COMMENCING AT THE SOUTHEAST CORNER OF SAID LOT 1; THENCE NORTH ALONG THE WEST RIGHT-OF-WAY LINE OF PLAZA DRIVE, A DISTANCE OF 308.80 FEET TO THE PLACE OF BEGINNING OF THE TRACT TO BE DESCRIBED; THENCE WEST A DISTANCE OF 284.00 FEET; THENCE NORTH ALONG THE WEST LINE OF SAID LOT 1, A DISTANCE OF 100.00 FEET; THENCE EAST A DISTANCE OF 284.00 FEET; THENCE SOUTH ALONG THE WEST RIGHT-OF-WAY LINE OF PLAZA DRIVE, A DISTANCE OF 100.00 FEET TO THE PLACE OF BEGINNING, TOGETHER WITH AN UNRESTRICTED EASEMENT, FOR THE BENEFIT OF THE OWNER AND ITS EMPLOYEES, CUSTOMERS, AND INVITEES, TO USE ALL OTHER PORTIONS IN THE COMMON AREAS OF THE PLAZA PARK SHOPPING CENTER (OF WHICH THE ABOVE DESCRIBED PROPERTY IS A PART), INCLUDING ALL ITS SIDEWALKS, DRIVEWAYS, WALKWAYS, PARKING AREAS, STORAGE AREAS, AND LOADING AREAS, AS PROVIDED IN THE DECLARATION OF RESTRICTIONS DATED JULY 11, 1975, RECORDED JULY 17, 1975 AS DOCUMENT NO. 75-12262.

STATE OF ILLINOIS)
 COUNTY OF PEORIA) SS

WE, ZUMWALT & ASSOCIATES, INC. DO HEREBY CERTIFY THAT WE HAVE MADE AN IMPROVEMENT LOCATION SURVEY OF PROPERTY BEING A PART OF LOT 1 OF HILLCREST PARK SUBDIVISION, BEING A SUBDIVISION OF PART OF THE S 1/2 OF SECTION 29, T11N, R9E, OF THE 4TH PM, PEORIA COUNTY, ILLINOIS, AND THAT THE ABOVE PLAT IS A TRUE AND CORRECT REPRESENTATION OF SAID SURVEY AS DRAWN TO A SCALE OF 1" EQUALS 30 FEET.

DATED THIS 31ST DAY OF JULY, A.D. 2001.

ZUMWALT & ASSOCIATES, INC.

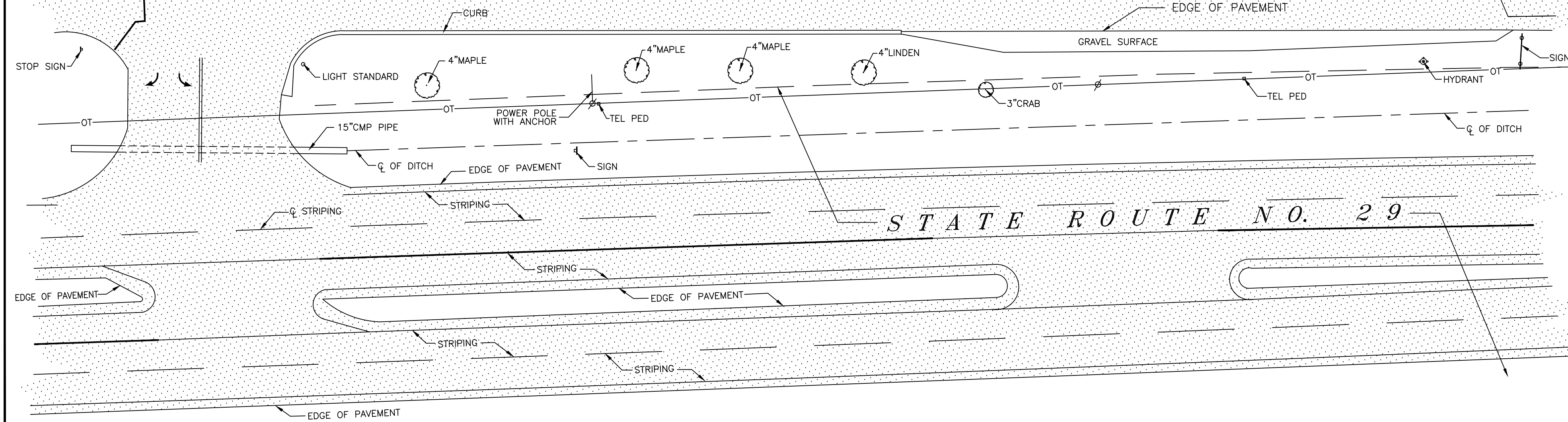
BY _____
 ILLINOIS PROFESSIONAL LAND SURVEYOR #2326



779.2'

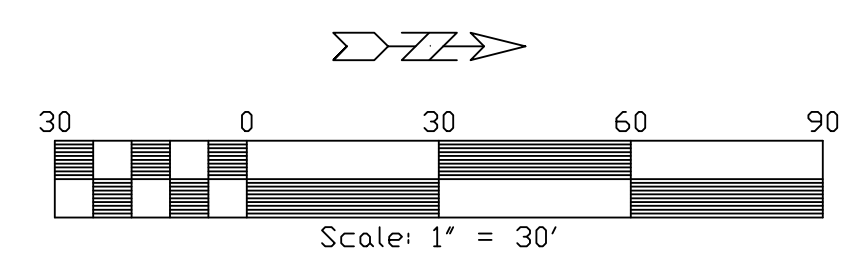
WEST R.O.W. LINE OF PLAZA DRIVE

PLAZA DRIVE



LEGEND

- - FOUND IRON PIPE
- - PK NAIL SET
- - GUARD POST
- ▨ - BITUMINOUS SURFACE
- ▩ - CONCRETE SURFACE
- OT- - OVERHEAD TELEPHONE

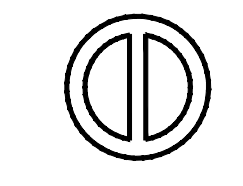


DRAWN BY: MJF
 APPROVED BY: GRZ
 DATE: JULY 31, 2001
 DWG.: 18657/Improvement.dwg

REVISIONS:	
MAY 3, 2002	- ADDED DATA BOX - DOB
MARCH 17, 2005	- REVISED TENANT INFORMATION - DOB
FEBRUARY 6, 2014	- REVISED TENANT INFORMATION - MJF
JULY 25, 2019	- REVISED TENANT INFORMATION - TWA

ZUMWALT & ASSOCIATES, INC.
 PROFESSIONAL ENGINEERS • REGISTERED LAND SURVEYORS
 1040 W. OLYMPIA DRIVE
 PEORIA, ILLINOIS 61615 • (309) 692-5074

*PLAZA PARK SHOPPING CENTER
 CHILlicothe, ILLINOIS*



COHEN DEVELOPMENT COMPANY
 406 SW WASHINGTON STREET PEORIA, ILLINOIS 61602
 (309) 673-0790

JOB NO. 18,657