

**E. STREET ROAD**

INTERSTATE  
**276**

**±20,000 SF**  
**AVAILABLE IMMEDIATELY**

**SOMERTON ROAD**

# **4667** **SOMERTON RD** **TREVOSE, PA**

## **20,000 SF AVAILABLE IMMEDIATELY**

- 20,000 SF Available
- 20' Clear Height
- 46' x 38' Column Spacing
- Wet Sprinkler System
- Abundant Employee Parking
- Convenient Access to Route 1, PA Turnpike & I-95
- 1,500 SF Office
- 4 Docks
- Fully Renovated



**MATT MACDONALD**

matt.macdonald@lee-associates.com  
610.238.8118

**JIMMY FRANCHETTI**

jfranchetti@lee-associates.com  
610.335.1092

**LEE & ASSOCIATES**  
COMMERCIAL REAL ESTATE SERVICES

**LEE & ASSOCIATES OF EASTERN PENNSYLVANIA LLC**

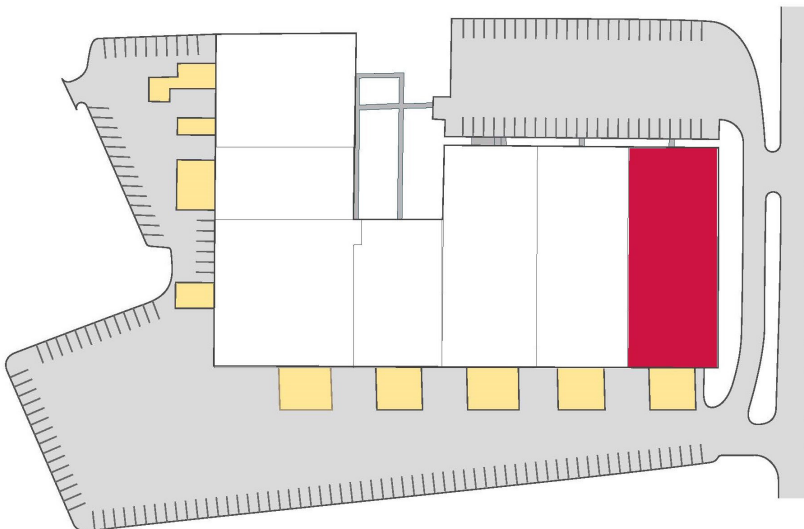
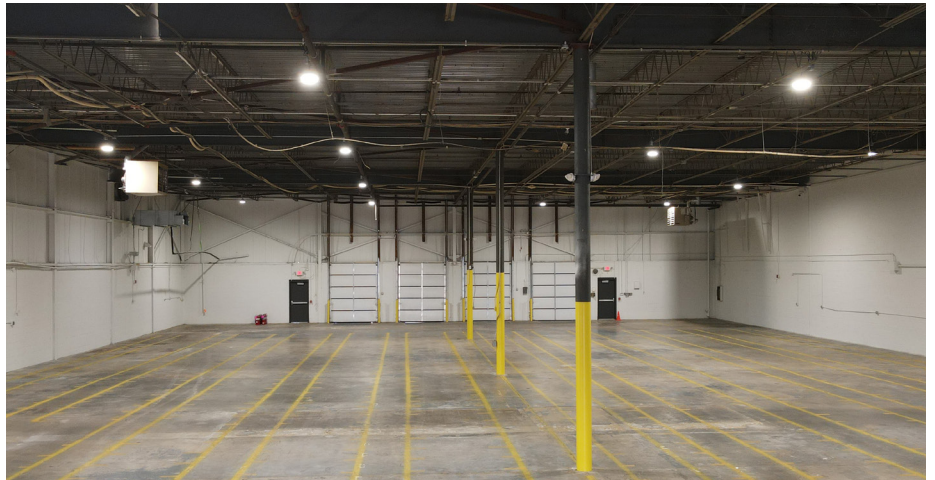
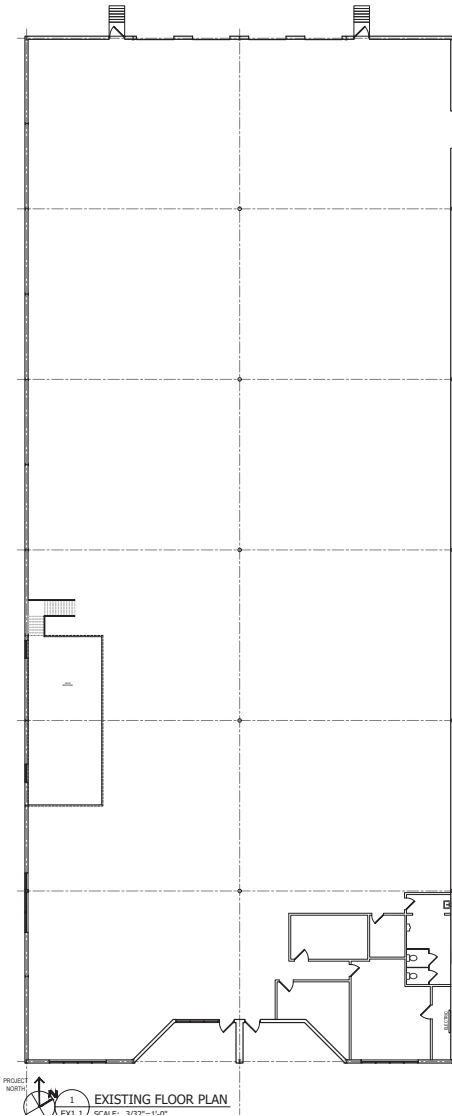
610 W. Germantown Pike, Suite 160, Plymouth Meeting, PA 19462 USA | 610.400.0499 | lee-associates.com/easternpa



# 4667 SOMERTON ROAD

TREVOSE, PA 19053

**LEE & ASSOCIATES**  
COMMERCIAL REAL ESTATE SERVICES



Owned by:

**ARDEN** | LOGISTICS PARKS

Leasing Team:

**MATT MACDONALD**

matt.macdonald@lee-associates.com  
610.238.8118

**JIMMY FRANCHETTI**

jfranchetti@lee-associates.com  
610.335.1092

All information furnished regarding property for sale, rental or financing is from sources deemed reliable, but no warranty or representation is made as to the accuracy thereof and same is submitted subject to errors, omissions, change of price, rental or other conditions prior to sale, lease or financing or withdrawal without notice. No liability of any kind is to be imposed on the broker herein.

LEE & ASSOCIATES OF EASTERN PENNSYLVANIA LLC

610 W. Germantown Pike, Suite 160, Plymouth Meeting, PA 19462 USA | 610.400.0499 | lee-associates.com/easternpa