

**SALE**

## 15-Unit Waterfront Development (Potential for Single Family or Condo Dev.)

**2981 S DANBURY RD**

Port Clinton, OH 43440

**PRESENTED BY:**

**JERRY FIUME, SIOR, CCIM**

O: 330.416.0501

jerry.fiume@svn.com

**TYLER ROBIN**

O: 330.591.7974

tyler.robin@svn.com

**VICTOR VOINOVICH**

O: 216.235.2588

vic@vicvoinovich.com

PROPERTY SUMMARY



OFFERING SUMMARY

SALE PRICE:	\$995,000
LOT SIZE:	2.41 Acres
PRICE PER ACRE:	\$413K
ZONING	"R-C" Recreational Commercial
UTILITIES:	Electric, Gas, City Water, & Sewer
FRONTAGE:	Approx. 625 Feet
DEPTH:	Approx. 235 Feet
MARKET:	Toledo, OH

JERRY FIUME, SIOR, CCIM  
O: 330.416.0501  
jerry.fiume@svn.com

TYLER ROBIN  
O: 330.591.7974  
tyler.robin@svn.com

VICTOR VOINOVICH  
O: 216.235.2588  
vic@vicvoinovich.com



PROPERTY DESCRIPTION

SVN Summit Commercial Real Estate Advisors is pleased to present a boutique development opportunity in the heart of Vacationland, Ohio, an ideal setting for both lifestyle enjoyment and long-term investment.

This limited offering represents the next phase of a successful master-planned community, where all single-family homes and lots from the initial phase have already sold out. Set against the backdrop of Lake Erie’s natural beauty, the site offers captivating bay views, access to private lakes, and proximity to a wide array of premier regional destinations, including Cedar Point, Marblehead, Kelly’s Island, and Put-in-Bay.

Whether you’re looking to build for seasonal demand or owner-occupied use, this is a rare chance to deliver a highly marketable product in one of Ohio’s most desirable resort corridors.

**COVE ON THE BAY**

PORT CLINTON, OHIO  
R-C ZONING ± 2.6 ACRES 2.41 ac

0.241 ac must be dedicated as Open Space, not including setbacks or parking

36 parking spaces needed for 18 units  
30 needed for 15 units  
Garages can count as 1 space

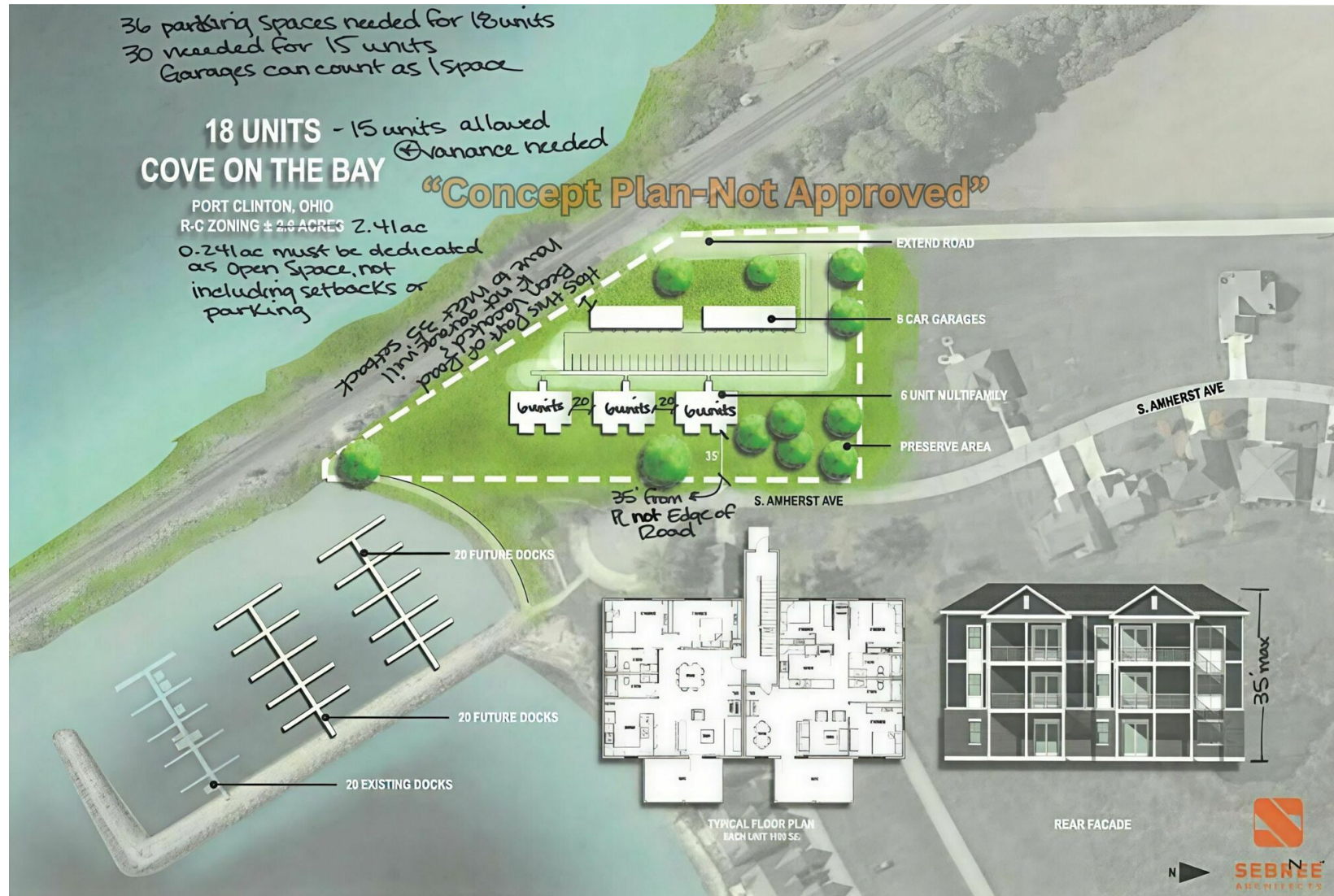
**"Concept Plan-Not Approved"**

18 UNITS - 15 units allowed  
⊕ Variance needed

Labels on plan:  
EXTEND ROAD  
8 CAR GARAGES  
6 UNIT MULTIFAMILY  
PRESERVE AREA  
S. ANHERST AVE  
35' from R. not Edge of Road  
20 FUTURE DOCKS  
20 FUTURE DOCKS  
20 EXISTING DOCKS  
TYPICAL FLOOR PLAN EACH UNIT WITH SG  
REAR FACADE  
SEBNEE ARCHITECTS

- 3

# CONCEPT PLAN WITH NOTES FROM THE TOWNSHIP



**JERRY FIUME, SIOR, CCIM**

O: 330.416.0501

jerry.fiume@svn.com

**TYLER ROBIN**

O: 330.591.7974

tyler.robin@svn.com

**VICTOR VOINOVICH**

O: 216.235.2588

vic@vicvoinovich.com

## ADDITIONAL PHOTOS



**JERRY FIUME, SIOR, CCIM**

O: 330.416.0501

[jerry.fiume@svn.com](mailto:jerry.fiume@svn.com)

**TYLER ROBIN**

O: 330.591.7974

[tyler.robin@svn.com](mailto:tyler.robin@svn.com)

**VICTOR VOINOVICH**

O: 216.235.2588

[vic@vicvoinovich.com](mailto:vic@vicvoinovich.com)

## ADDITIONAL PHOTOS



**JERRY FIUME, SIOR, CCIM**

O: 330.416.0501

[jerry.fiume@svn.com](mailto:jerry.fiume@svn.com)

**TYLER ROBIN**

O: 330.591.7974

[tyler.robin@svn.com](mailto:tyler.robin@svn.com)

**VICTOR VOINOVICH**

O: 216.235.2588

[vic@vicvoinovich.com](mailto:vic@vicvoinovich.com)

## ZONING & APPROVAL PROCESS CONTACT INFORMATION

Cove on the Bay is a proposed Condominium Project. Zoning is subject to the Danbury Township Zoning Approval Process, which requires public hearings for conditional use and special approval by the Townships Board of Zoning Appeals.

For Zoning Information please contact:

**Kathryn A. Dale, AICP**

Danbury Township Zoning & Planning Administrator  
5972 E Port Clinton Eastern Road  
Marblehead, Ohio 43440  
419-734-3137  
[Zoning@danburytownship.com](mailto:Zoning@danburytownship.com)

For Regional Planning Information please contact Traditional SF or TF Subdivision:

**Mark Messa**

Director  
315 Madison Street , Room 107  
Port Clinton, Ohio 43452  
419-734-6780  
[mmessa@co.ottawa.oh.us](mailto:mmessa@co.ottawa.oh.us)

Approvals will be required for sewer & water service subject to Ottawa County Sanitary Engineers Office. For Sewer and Water information please contact:

**Zach Mulder**

Sanitary Engineer  
315 Madison Street, Room 105  
Port Clinton, Ohio 43452  
419-734-6780  
[ocse@co.ottawa.oh.us](mailto:ocse@co.ottawa.oh.us)

**JERRY FIUME, SIOR, CCIM**

O: 330.416.0501  
[jerry.fiume@svn.com](mailto:jerry.fiume@svn.com)

**TYLER ROBIN**

O: 330.591.7974  
[tyler.robin@svn.com](mailto:tyler.robin@svn.com)

**VICTOR VOINOVICH**

O: 216.235.2588  
[vic@vicvoinovich.com](mailto:vic@vicvoinovich.com)

## ZONING & APPROVAL PROCESS CONTACT INFORMATION

Approvals will be required through the Ohio Environmental Protection Agency (Ohio EPA).  
For Ohio EPA information please contact:

**Britany Brockmann**

Construction Stormwater & MS4

347 N Dunbridge Road

Bowling Green, Ohio 43402

419-373-3021

[Britany.Brockmann@epa.ohio.gov](mailto:Britany.Brockmann@epa.ohio.gov)

Approvals will be required for the dockage and marina expansion along with the pump system, wetland and the Indian burial ground through the Army Corp of Engineers.

For U.S. Army Corp information please contact:

**Keith Sendziak**

Biologist

U.S. Army Corps of Engineers Buffalo District

1776 Niagara Street

Buffalo, New York 14207

719-879-4339

[Keith.C.Sendziak@usace.army.mil](mailto:Keith.C.Sendziak@usace.army.mil)

Other Contacts:

**Diane Rozak**

Danbury Township Trustee

3265 S Confederate Drive

Marblehead, Ohio 43440

419-340-9359

[dianne@danburytownship.com](mailto:dianne@danburytownship.com)

**JERRY FIUME, SIOR, CCIM**

O: 330.416.0501

[jerry.fiume@svn.com](mailto:jerry.fiume@svn.com)

**TYLER ROBIN**

O: 330.591.7974

[tyler.robin@svn.com](mailto:tyler.robin@svn.com)

**VICTOR VOINOVICH**

O: 216.235.2588

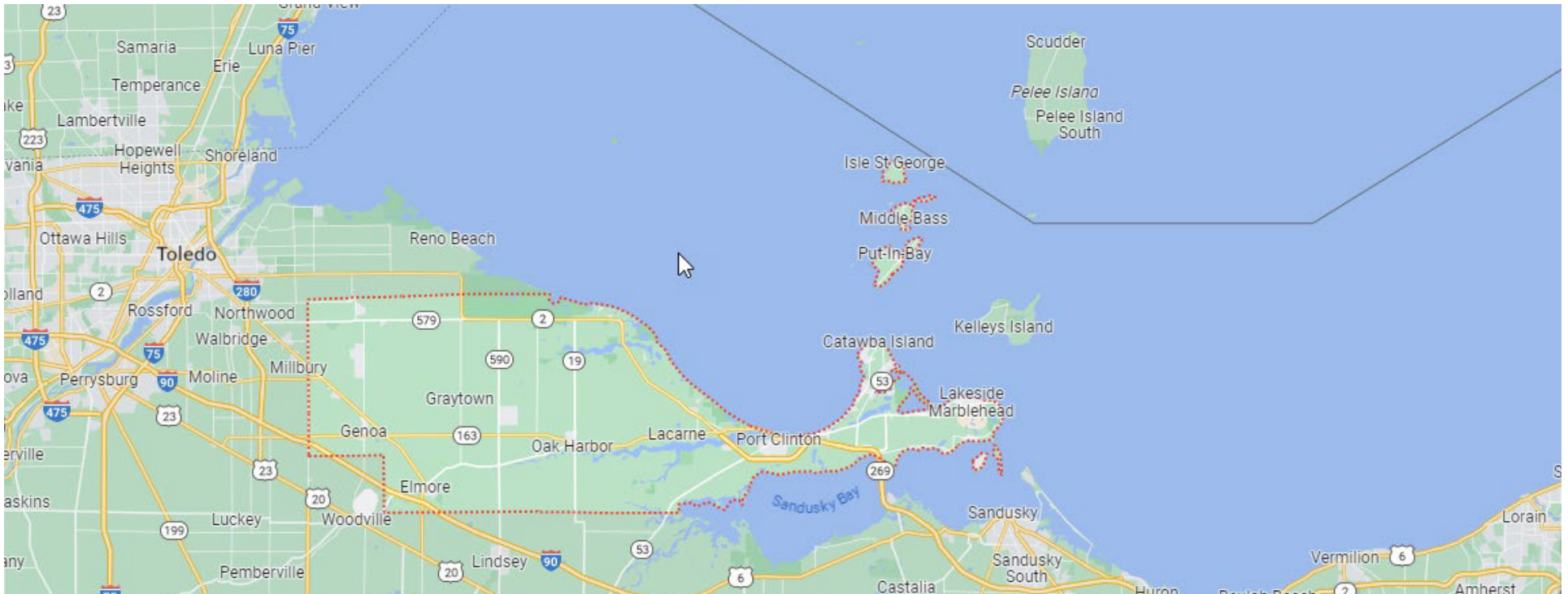
[vic@vicvoinovich.com](mailto:vic@vicvoinovich.com)

## VACATIONLAND, OTTAWA COUNTY & DANBURY TOWNSHIP

The **Vacationland** region of Ohio-billed as such for being known primarily as a major summertime tourist destination-is the area that is generally considered to be in the north part of the state, and along the western half of the Lake Erie shoreline around Sandusky Bay, specifically the counties of Erie, Huron, Ottawa, and Sandusky.

### Ottawa County

**Ottawa County** is one of four counties that make up Vacationland, Ohio, and part of the Toledo, Ohio MSA.



**JERRY FIUME, SIOR, CCIM**

O: 330.416.0501

jerry.fiume@svn.com

**TYLER ROBIN**

O: 330.591.7974

tyler.robin@svn.com

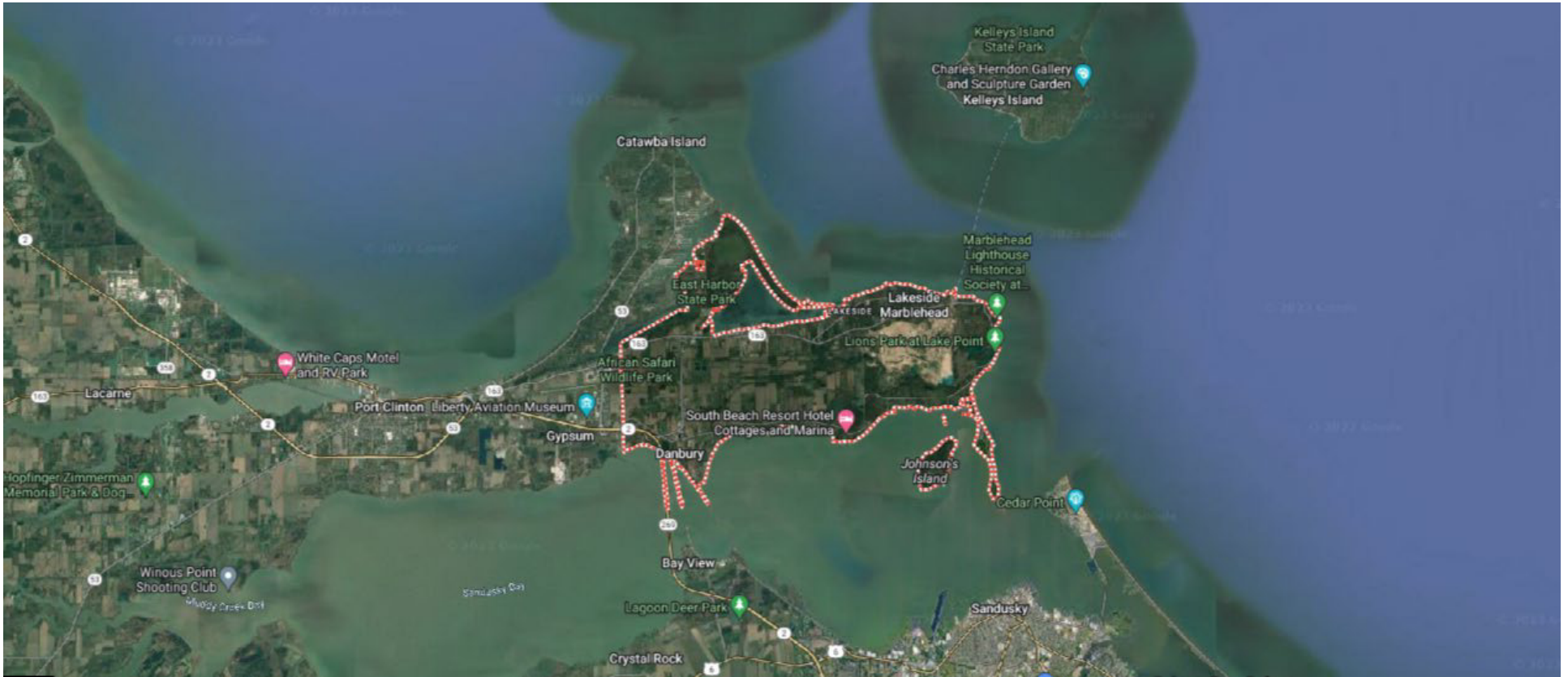
**VICTOR VOINOVICH**

O: 216.235.2588

vic@vicvoinovich.com

## VACATIONLAND, OTTAWA COUNTY & DANBURY TOWNSHIP

**Danbury Township** encompasses an area of 17.76 square miles which includes 32.75 miles of Lake Erie, Sandusky Bay and Harbor shoreline. The historic Village of Marblehead is located at the east end of the Township. The permanent population of Danbury is 4,924 with an additional 846 residing in the Village. Seasonal homes, condominiums, marina, campgrounds, cottages and recreational vehicle parks are home to a population of several thousand summer-only residents.



**JERRY FIUME, SIOR, CCIM**

O: 330.416.0501

jerry.fiume@svn.com

**TYLER ROBIN**

O: 330.591.7974

tyler.robin@svn.com

**VICTOR VOINOVICH**

O: 216.235.2588

vic@vicvoinovich.com

LOCATION DESCRIPTION

The site is a short drive from Cedar Point. It sits at the southwestern tip of the Marblehead Peninsula, which divides Lake Erie from Sandusky Bay. Discover what quaint villages like Marblehead have to offer; specialty shops, casual restaurants, beaches, wineries, art galleries, museums, boat docks, and an iconic lighthouse.

Country-like roads lead people to a simpler, more authentic place that never feels touristy. Enjoy an eclectic mix of summer cottages, permanent homes, and lakefront condominiums.

The site is part of an area that is referred to regionally as Vacationland Ohio due to the large number of tourists who flock to the area in the summer months. It remains a popular vacation destination thanks to its lake frontage, ferry service to the Lake Erie Islands, the nearby Lakeside Chautauqua, and Cedar Point amusement park.

Nearby Marblehead Lighthouse is the oldest continuously operating lighthouse on the American side of the Great Lakes. The lighthouse is a part of the Marblehead Lighthouse State Park located within the village just northwest of the site.

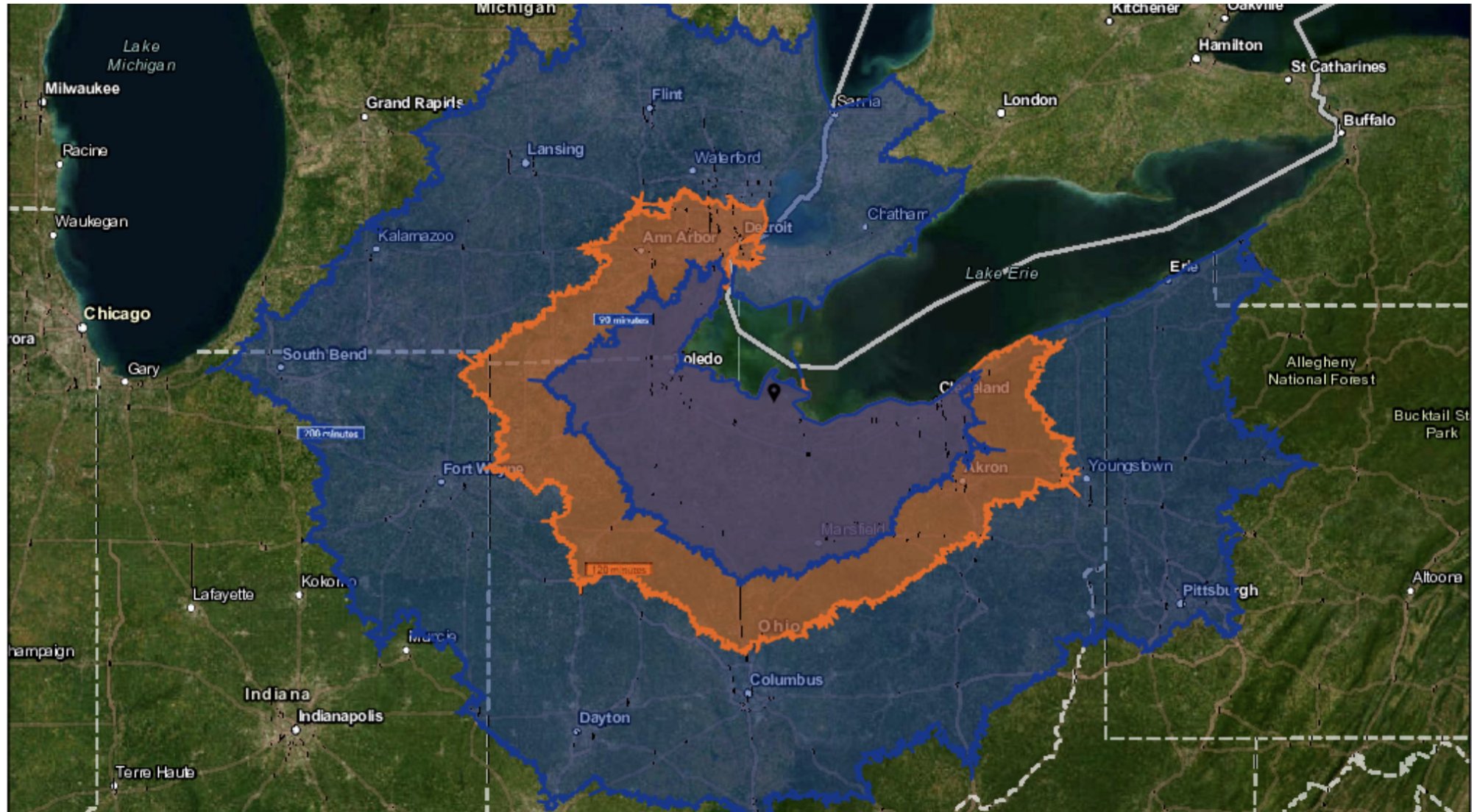
The peninsula is home to the busiest Coast Guard station on the Great Lakes. East Harbor State Park offers 2 miles of sandy beach, 10 miles of hiking trails, bird and wildlife watching, boating, swimming, picnicking, and camping. Lakeside Daisy State Nature Preserve protects the only natural United States population of the Lakeside Daisy, a threatened plant species and one of Ohio's most spectacular wildflowers.

From spring until fall, the area is bustling with tourists who enjoy Lake Erie and leisure time activities. Winter brings a peaceful stillness to the area. When a fresh snowfall gently descends, one can hardly resist taking a photograph of the picture-perfect scene of a small-town winter. The spring thaw brings welcome sunshine, Lakeside Daisies, and city-weary weekenders in search of a peaceful atmosphere.

The same services, and more, that are found in much larger cities are available in the area. Excellent public water systems and sewer high-speed internet access, a ferry to Kelley’s Island, a wealth of businesses catering to nearly every possible need, and attractive parks. The area enjoys a deep-rooted history fashioned by a community of neighbors.

JERRY FIUME, SIOR, CCIM	TYLER ROBIN	VICTOR VOINOVICH
O: 330.416.0501	O: 330.591.7974	O: 216.235.2588
jerry.fiume@svn.com	tyler.robin@svn.com	vic@vicvoinovich.com

## DRIVE TIME MAP - 90, 120 & 200 MINUTES



**JERRY FIUME, SIOR, CCIM**

O: 330.416.0501

jerry.fiume@svn.com

**TYLER ROBIN**

O: 330.591.7974

tyler.robin@svn.com

**VICTOR VOINOVICH**

O: 216.235.2588

vic@vicvoinovich.com

## DESTINATIONS MAP



**JERRY FIUME, SIOR, CCIM**

O: 330.416.0501

jerry.fiume@svn.com

TYLER ROBIN

O: 330.591.7974

tyler.robin@svn.com

VICTOR VOINOVICH

O: 216.235.2588

vic@vicvoinovich.com

RETAILERS MAP



**JERRY FIUME, SIOR, CCIM**  
O: 330.416.0501  
jerry.fiume@svn.com

**TYLER ROBIN**  
O: 330.591.7974  
tyler.robin@svn.com

**VICTOR VOINOVICH**  
O: 216.235.2588  
vic@vicvoinovich.com

## AMUSEMENTS, WATERPARKS & WILDLIFE

### Cedar Point Amusement Park

Cedar Point is known as “The Roller Coaster Capital of the World”, and for good reason! With 18 roller coasters, plenty of other rides, delicious food, live shows, and hotel accommodations there is something for everyone at Cedar Point.

### Cedar Point Shores Waterpark (formerly Soak City)

There are 11 slides and attractions designed for adults mostly at the Cedar Point Shores Waterpark, as well as 4 kid zones, including in here a toddler river and Lemmy’s Lagoon. Refreshments and food can be found on the site.

### The Watering Hole Safari & Water Park

1530 South Danbury Road, Port Clinton, OH 43452

Visit the Monsoon Lagoon Water Park and treat your family to a day filled with splash adventures and games. The park features water playgrounds, slides, Go-Karts, bumper boats and mini-golf.

### African Safari Wildlife Park

267 South Lightner Road, Port Clinton, OH 43452

Located on a 100-acre preserve, African Safari Wildlife Park in Port Clinton, Ohio, is home to more than 400 exotic animals. Visitors can see and even feed the animals from the comfort of their car, and watch live entertainment shows seasonally.

**JERRY FIUME, SIOR, CCIM**

O: 330.416.0501

jerry.fiume@svn.com

**TYLER ROBIN**

O: 330.591.7974

tyler.robin@svn.com

**VICTOR VOINOVICH**

O: 216.235.2588

vic@vicvoinovich.com

### **Marblehead Lighthouse State Park**

Built in 1821, Marblehead Lighthouse is the oldest operating lighthouse on the Great Lakes. There is a museum on the grounds with displays and artifacts representing the colorful history of the lighthouse and the people who lived there.

### **Erie Spirit Sailing Adventures**

8549 Northshore Blvd., Marblehead, OH 43440

Book a trip with Captain Jim and Erie Spirit Sailing Adventures and enjoy a family friendly day out on the waters of Lake Erie. Choose from standard tour packages or work out a custom plan with the Captain and let your adventure begin.

### **Miller Boat Line**

5174 East Water Street, Port Clinton, OH 43452

Connecting the Ohio mainland with the islands of Lake Erie, Miller Boat Line, is the preferred choice for travelers. Whether transporting your vehicle back and forth, or just yourself, the Miller ferries are known for being on-time and their customer service.

**JERRY FIUME, SIOR, CCIM**

O: 330.416.0501

jerry.fiume@svn.com

**TYLER ROBIN**

O: 330.591.7974

tyler.robin@svn.com

**VICTOR VOINOVICH**

O: 216.235.2588

vic@vicvoinovich.com

## GOLF COURSES

### Bay Point Golf Course, Bay Pointe Course

9 holes over 1,490 yards with a par of 27 (Public)

### Catawba Island Club, Catawba Island Front 9 Course

9 holes over 2,665 yards with a par of 34 (Private Non-Equity)

### Catawba Island Club, Catawba Island Back 9 Course

18 holes (Private Non-Equity)

### The Islander Golf & Country Club, The Islander Course

18 holes over 5,572 yards with a par of 71 (Public)

### Mills Creek Golf Course, Mills Creek Course

9 holes over 3,010 yards with a par of 36 (Municipal)

### Saunders Golf Course, Saunders Course

9 holes over 1,235 yards with a par of 30 (Public)

### Plum Brook Country Club, Plum Brook Course

18 holes over 6,344 yards with a par of 71 (Private Equity)

### Keys Golf Course

9 holes over 3,081 yards with a par of 36 (Public)

### Sawmill Creek Golf Club & Resort, Sawmill Creek Course

18 holes over 6,702 yards with a par of 71 (Public)

### Wosusickett Golf Course, Woussickett Course

18 holes over 5,992 yards with a par of 70 (Public)

### Erie Islands Resort, Little Nessie Par-3 Course

9 holes (Public)

### Port Clinton Golf Course, Port Clinton Course

9 holes over 2,981 yards with a par of 36 (Public)

### Thunderbird Hills Golf Course, North Course

18 holes over 6,347 yards with a par of 72 (Public)

### Thunderbird Hills Golf Course, South Course

18 holes over 6,235 yards with a par of 72 (Public)

### Sleepy Hollow Golf Course, Sleepy Hollow Course

18 holes over 6,371 yards with a par of 71 (Public)

JERRY FIUME, SIOR, CCIM

O: 330.416.0501

jerry.fiume@svn.com

TYLER ROBIN

O: 330.591.7974

tyler.robin@svn.com

VICTOR VOINOVICH

O: 216.235.2588

vic@vicvoinovich.com

## WINERIES

### Chateau Tebea

525 S R 635  
Helena, OH 43435  
P: 419-638-5411

### D&D Smith Winery

401 W Main St.  
Norwalk OH 44857  
P: 419-577-0242

### Firelands Winery

917 Bardshar Rd.  
Sandusky, OH 44870  
P: 419-625-5474 or 800-548-WINE

### Gideon Owen Restaurant & Historic Winery

3845 East Wine Cellar Rd.  
Port Clinton, OH 43452  
P: 419-797-4445

### Heineman Winery

978 Catawba Avenue  
Put-In-Bay, Ohio 43456  
P: (419) 285-2811

### Wine Trail Attractions –

### Goodtime-Lake Erie Island Cruises

Jackson St Pier, PO Box 60  
Sandusky, OH 44870  
P: 419-625-9692

JERRY FIUME, SIOR, CCIM

O: 330.416.0501

jerry.fiume@svn.com

TYLER ROBIN

O: 330.591.7974

tyler.robin@svn.com

VICTOR VOINOVICH

O: 216.235.2588

vic@vicvoinovich.com

AREA ANALYTICS

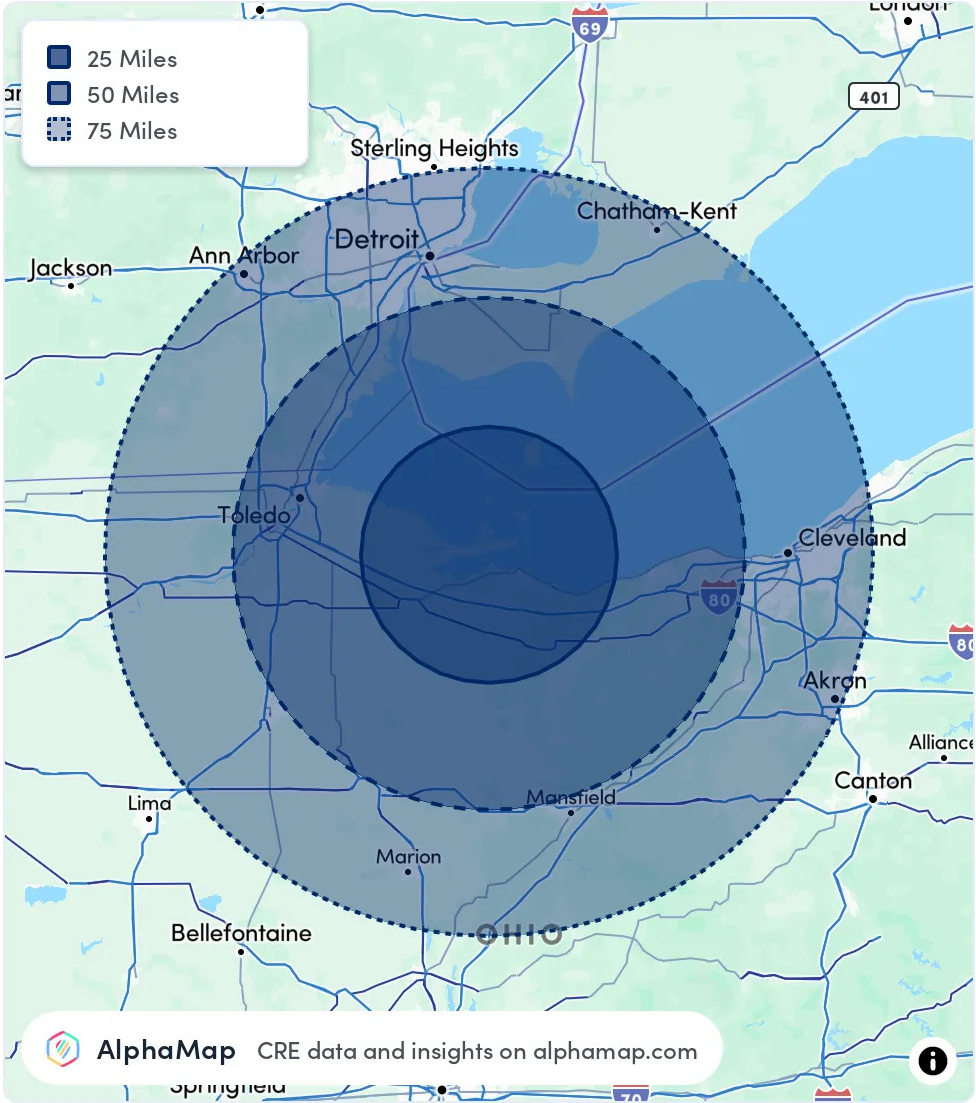
POPULATION                      25 MILES   50 MILES   75 MILES

TOTAL POPULATION	181,574	1,595,027	7,494,375
AVERAGE AGE	44	42	41
AVERAGE AGE (MALE)	43	41	40
AVERAGE AGE (FEMALE)	45	43	42

HOUSEHOLD & INCOME   25 MILES   50 MILES   75 MILES

TOTAL HOUSEHOLDS	77,780	663,411	3,113,506
PERSONS PER HH	2.3	2.4	2.4
AVERAGE HH INCOME	\$83,479	\$91,203	\$93,391
AVERAGE HOUSE VALUE	\$213,871	\$226,870	\$244,580
PER CAPITA INCOME	\$36,295	\$38,001	\$38,912

Map and demographics data derived from AlphaMap



**JERRY FIUME, SIOR, CCIM**  
O: 330.416.0501  
jerry.fiume@svn.com

**TYLER ROBIN**  
O: 330.591.7974  
tyler.robin@svn.com

**VICTOR VOINOVICH**  
O: 216.235.2588  
vic@vicvoinovich.com