

CORTLANDVILLE CROSSING SHOPPING CENTER

848-854 STATE ROUTE 13 | CORTLAND, NY 13045

FOR SALE

GROCERY-ANCHORED VALUE-ADD
SHOPPING CENTER



ASKING PRICE: \$6,500,000

PRICE/SF: \$25/SF

PROPERTY INFORMATION

ADDRESS	854 Route 13
CITY STATE ZIP	Cortland, NY 13045
LOT ACREAGE	21.63
BUILDING SF	260,319
ASKING PRICE	\$6,500,000
CURRENT OCCUPANCY	49%
PROPERTY TAX	\$415,309

INVESTMENT HIGHLIGHTS

The subject property is a multi-tenant Price-Chopper, Marshall's, Dollar Tree and JCPenney-anchored shopping center situated on the east side of State Route-13, 3 miles southwest of central downtown Cortland and 21 miles east of Ithaca.

The approximately 260,319 SF supermarket-anchored center is tenanted by a mix of national and regional tenants and is currently 49% occupied, offering investors a significant value-add opportunity. The property is bordered to the north by Lowe's and to the South by a Super Walmart. Both Lowe's and Walmart own their parcels.

CONTACT EXCLUSIVE BROKERS FOR DETAILS

SCHUCKMAN
REALTY INC.

516-496-8888

www.schuckmanrealty.com

EDWARD GOTTLIEB, CRX, CLS
Licensed Associate R.E. Broker
ed@schuckmanrealty.com

MATTHEW COLANTONIO
Licensed Associate R.E. Broker
matt@schuckmanrealty.com

NEW YORK OFFICE: 12 E. 49th STREET, SUITE 10-107 | NEW YORK, NY 10017

LONG ISLAND OFFICE: 120 NORTH VILLAGE AVENUE | ROCKVILLE CENTRE, NY 11570

This information contained herein has been obtained from sources believed reliable. However, we have not verified it and make no guarantee, warranty or representation about it. It is submitted subject to the possibility of errors, omissions, change of price, rental and other conditions, prior sale, lease or financing, or withdrawal without notice. It is your responsibility to independently confirm its accuracy and completeness. Any projections, opinions, assumptions, or estimates used are for example only and they may not represent the current or future suitability, availability or performance of the property. You and your tax and legal advisors should conduct your own investigation of any property and transaction. We may or may not have an exclusive or nonexclusive contractual relationship with a tenant or the owner/landlord of a particular property; and if we do, such relationship shall be fully disclosed to you on a timely basis. Third-party trademarks, service marks, graphics, and logos belong to third parties. You are not granted any right or license with respect to Schuckman Realty Inc.'s trademarks service marks, graphics, and logos or the trademarks service marks, graphics, and logos of any third party. Kenneth Schuckman is Broker of record of Schuckman Realty Inc.

CORTLANDVILLE CROSSING SHOPPING CENTER

848-854 STATE ROUTE 13 | CORTLAND, NY 13045

PROPERTY PHOTOS



CONTACT EXCLUSIVE BROKERS FOR DETAILS

SCHUCKMAN
REALTY INC.

516-496-8888

www.schuckmanrealty.com

EDWARD GOTTLIEB, CRX, CLS
Licensed Associate R.E. Broker
ed@schuckmanrealty.com

MATTHEW COLANTONIO
Licensed Associate R.E. Broker
matt@schuckmanrealty.com

NEW YORK OFFICE: 12 E. 49th STREET, SUITE 10-107 | NEW YORK, NY 10017

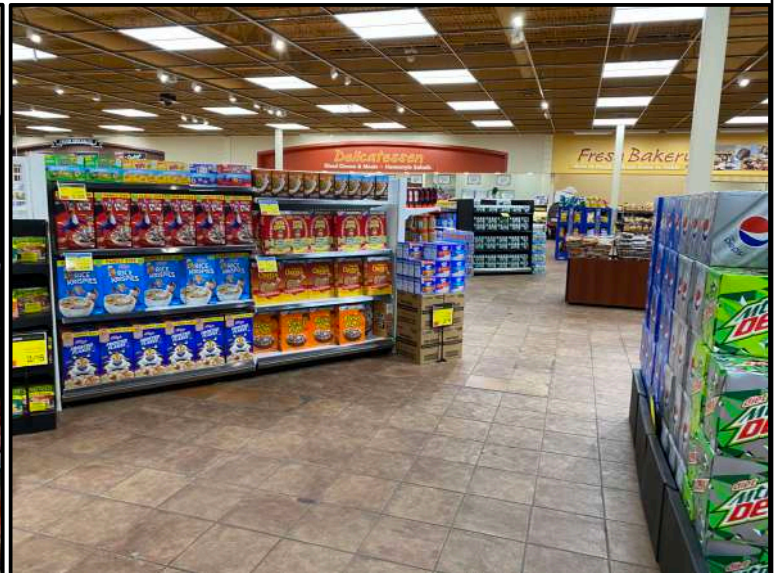
LONG ISLAND OFFICE: 120 NORTH VILLAGE AVENUE | ROCKVILLE CENTRE, NY 11570

This information contained herein has been obtained from sources believed reliable. However, we have not verified it and make no guarantee, warranty or representation about it. It is submitted subject to the possibility of errors, omissions, change of price, rental and other conditions, prior sale, lease or financing, or withdrawal without notice. It is your responsibility to independently confirm its accuracy and completeness. Any projections, opinions, assumptions, or estimates used are for example only and they may not represent the current or future suitability, availability or performance of the property. You and your tax and legal advisors should conduct your own investigation of any property and transaction. We may or may not have an exclusive or nonexclusive contractual relationship with a tenant or the owner/landlord of a particular property; and if we do, such relationship shall be fully disclosed to you on a timely basis. Third-party trademarks, service marks, graphics, and logos belong to third parties. You are not granted any right or license with respect to Schuckman Realty Inc.'s trademarks service marks, graphics, and logos or the trademarks service marks, graphics, and logos of any third party. Kenneth Schuckman is Broker of record of Schuckman Realty Inc.

CORTLANDVILLE CROSSING SHOPPING CENTER

848-854 STATE ROUTE 13 | CORTLAND, NY 13045

PRICE CHOPPER INTERIOR



CONTACT EXCLUSIVE BROKERS FOR DETAILS

SCHUCKMAN
REALTY INC.

516-496-8888

www.schuckmanrealty.com

EDWARD GOTTLIEB, CRX, CLS
Licensed Associate R.E. Broker
ed@schuckmanrealty.com

MATTHEW COLANTONIO
Licensed Associate R.E. Broker
matt@schuckmanrealty.com

NEW YORK OFFICE: 12 E. 49th STREET, SUITE 10-107 | NEW YORK, NY 10017

LONG ISLAND OFFICE: 120 NORTH VILLAGE AVENUE | ROCKVILLE CENTRE, NY 11570

This information contained herein has been obtained from sources believed reliable. However, we have not verified it and make no guarantee, warranty or representation about it. It is submitted subject to the possibility of errors, omissions, change of price, rental and other conditions, prior sale, lease or financing, or withdrawal without notice. It is your responsibility to independently confirm its accuracy and completeness. Any projections, opinions, assumptions, or estimates used are for example only and they may not represent the current or future suitability, availability or performance of the property. You and your tax and legal advisors should conduct your own investigation of any property and transaction. We may or may not have an exclusive or nonexclusive contractual relationship with a tenant or the owner/landlord of a particular property; and if we do, such relationship shall be fully disclosed to you on a timely basis. Third-party trademarks, service marks, graphics, and logos belong to third parties. You are not granted any right or license with respect to Schuckman Realty Inc.'s trademarks service marks, graphics, and logos or the trademarks service marks, graphics, and logos of any third party. Kenneth Schuckman is Broker of record of Schuckman Realty Inc.

CORTLANDVILLE CROSSING SHOPPING CENTER

848-854 STATE ROUTE 13 | CORTLAND, NY 13045

DEDICATED PYLON



CONTACT EXCLUSIVE BROKERS FOR DETAILS

SCHUCKMAN
REALTY INC.

516-496-8888

www.schuckmanrealty.com

EDWARD GOTTLIEB, CRX, CLS
Licensed Associate R.E. Broker
ed@schuckmanrealty.com

MATTHEW COLANTONIO
Licensed Associate R.E. Broker
matt@schuckmanrealty.com

NEW YORK OFFICE: 12 E. 49th STREET, SUITE 10-107 | NEW YORK, NY 10017

LONG ISLAND OFFICE: 120 NORTH VILLAGE AVENUE | ROCKVILLE CENTRE, NY 11570

This information contained herein has been obtained from sources believed reliable. However, we have not verified it and make no guarantee, warranty or representation about it. It is submitted subject to the possibility of errors, omissions, change of price, rental and other conditions, prior sale, lease or financing, or withdrawal without notice. It is your responsibility to independently confirm its accuracy and completeness. Any projections, opinions, assumptions, or estimates used are for example only and they may not represent the current or future suitability, availability or performance of the property. You and your tax and legal advisors should conduct your own investigation of any property and transaction. We may or may not have an exclusive or nonexclusive contractual relationship with a tenant or the owner/landlord of a particular property; and if we do, such relationship shall be fully disclosed to you on a timely basis. Third-party trademarks, service marks, graphics, and logos belong to third parties. You are not granted any right or license with respect to Schuckman Realty Inc.'s trademarks service marks, graphics, and logos or the trademarks service marks, graphics, and logos of any third party. Kenneth Schuckman is Broker of record of Schuckman Realty Inc.

CORTLANDVILLE CROSSING SHOPPING CENTER

848-854 STATE ROUTE 13 | CORTLAND, NY 13045

NEIGHBORING LOWE'S & WALMART



CONTACT EXCLUSIVE BROKERS FOR DETAILS

SCHUCKMAN
REALTY INC.

516-496-8888

www.schuckmanrealty.com

EDWARD GOTTLIEB, CRX, CLS
Licensed Associate R.E. Broker
ed@schuckmanrealty.com

MATTHEW COLANTONIO
Licensed Associate R.E. Broker
matt@schuckmanrealty.com

NEW YORK OFFICE: 12 E. 49th STREET, SUITE 10-107 | NEW YORK, NY 10017

LONG ISLAND OFFICE: 120 NORTH VILLAGE AVENUE | ROCKVILLE CENTRE, NY 11570

This information contained herein has been obtained from sources believed reliable. However, we have not verified it and make no guarantee, warranty or representation about it. It is submitted subject to the possibility of errors, omissions, change of price, rental and other conditions, prior sale, lease or financing, or withdrawal without notice. It is your responsibility to independently confirm its accuracy and completeness. Any projections, opinions, assumptions, or estimates used are for example only and they may not represent the current or future suitability, availability or performance of the property. You and your tax and legal advisors should conduct your own investigation of any property and transaction. We may or may not have an exclusive or nonexclusive contractual relationship with a tenant or the owner/landlord of a particular property; and if we do, such relationship shall be fully disclosed to you on a timely basis. Third-party trademarks, service marks, graphics, and logos belong to third parties. You are not granted any right or license with respect to Schuckman Realty Inc.'s trademarks service marks, graphics, and logos or the trademarks service marks, graphics, and logos of any third party. Kenneth Schuckman is Broker of record of Schuckman Realty Inc.

CORTLANDVILLE CROSSING SHOPPING CENTER

848-854 STATE ROUTE 13 | CORTLAND, NY 13045

SCHUCKMAN REALTY INVESTMENT SALES TEAM

KENNETH SCHUCKMAN

Licensed R.E. Broker
ken@schuckmanrealty.com

MATTHEW COLANTONIO

Licensed Associate R.E. Broker
matt@schuckmanrealty.com

BARUCH EDELKOPF

Licensed Associate R.E. Broker
be@schuckmanrealty.com

EDWARD GOTTLIEB, CRX, CLS

Licensed Associate R.E. Broker
ed@schuckmanrealty.com

STEVEN HAKAKIAN

Licensed R.E. Salesperson
sh@schuckmanrealty.com

JEREMY NUSS

Licensed R.E. Salesperson
jnuss@schuckmanrealty.com

JOSEPH ROSENFELD

Licensed R.E. Salesperson
jrosenfeld@schuckmanrealty.com

SAM SCHERTZ

Licensed R.E. Salesperson
sam.schertz@schuckmanrealty.com

MENDY WIESNER

Licensed R.E. Salesperson
mw@schuckmanrealty.com

CONTACT EXCLUSIVE BROKERS FOR DETAILS

SCHUCKMAN
REALTY INC.

516-496-8888

www.schuckmanrealty.com

EDWARD GOTTLIEB, CRX, CLS

Licensed Associate R.E. Broker
ed@schuckmanrealty.com

MATTHEW COLANTONIO

Licensed Associate R.E. Broker
matt@schuckmanrealty.com

NEW YORK OFFICE: 12 E. 49th STREET, SUITE 10-107 | NEW YORK, NY 10017

LONG ISLAND OFFICE: 120 NORTH VILLAGE AVENUE | ROCKVILLE CENTRE, NY 11570

This information contained herein has been obtained from sources believed reliable. However, we have not verified it and make no guarantee, warranty or representation about it. It is submitted subject to the possibility of errors, omissions, change of price, rental and other conditions, prior sale, lease or financing, or withdrawal without notice. It is your responsibility to independently confirm its accuracy and completeness. Any projections, opinions, assumptions, or estimates used are for example only and they may not represent the current or future suitability, availability or performance of the property. You and your tax and legal advisors should conduct your own investigation of any property and transaction. We may or may not have an exclusive or nonexclusive contractual relationship with a tenant or the owner/landlord of a particular property; and if we do, such relationship shall be fully disclosed to you on a timely basis. Third-party trademarks, service marks, graphics, and logos belong to third parties. You are not granted any right or license with respect to Schuckman Realty Inc.'s trademarks service marks, graphics, and logos or the trademarks service marks, graphics, and logos of any third party. Kenneth Schuckman is Broker of record of Schuckman Realty Inc.