

NEW CONSTRUCTION RETAIL FOR LEASE | COMING Q1 2025



# Orchard Park

1582 W ORCHARD PARK DR | MERIDIAN, ID 83646



NOW UNDER CONSTRUCTION!

CLICK FOR VIDEO!



**BRIANNA MILLER CCIM, CLS**  
208.761.9373  
briannam@tokcommercial.com

**JP GREEN, CCIM**  
208.947.0852  
jgreen@tokcommercial.com

**MOSES MUKENGEZI**  
208.947.0836  
moses@tokcommercial.com

Tenants can be open for business in Q1 2025!

Prime opportunity to join Meridian's newest mixed-use development.

Join tenants Biscuit & Hogs, Chipotle, Idaho Central Credit Union, Jacksons, Mo' Bettahs, Olive Garden, Tide Cleaners, Wendy's, Winco, and many more!

New Meridian Library at Orchard Park now open.

High visibility location at Chinden and Linder hot spot — over 40,000 VPD at the intersection!

Plans currently in for permit approval.

SPACE	SIZE	RATE
Suite 104	1,378 SF	Contact Agent
Suite 105	1,509 SF	Contact Agent
Suite 106	2,558 SF	Contact Agent

T.I. allowance negotiable based on tenant and term.

<b>PROPERTY TYPE:</b>	Retail
<b>DELIVERY:</b>	Q1 2025
<b>LEASE TYPE:</b>	NNN
<b>NNN RATE:</b>	\$7.00/SF
<b>TERM:</b>	5+ years

CONTACT

HIGHLIGHTS

DETAILS

UPDATED: 11.19.2024

THIS PROPERTY IS EXCLUSIVELY MARKETED BY TOK BOISE LLC DBA TOK COMMERCIAL  
This information was obtained from sources believed reliable but cannot be guaranteed. Any opinions or estimates are used for example only.

TokCOMMERCIAL.COM



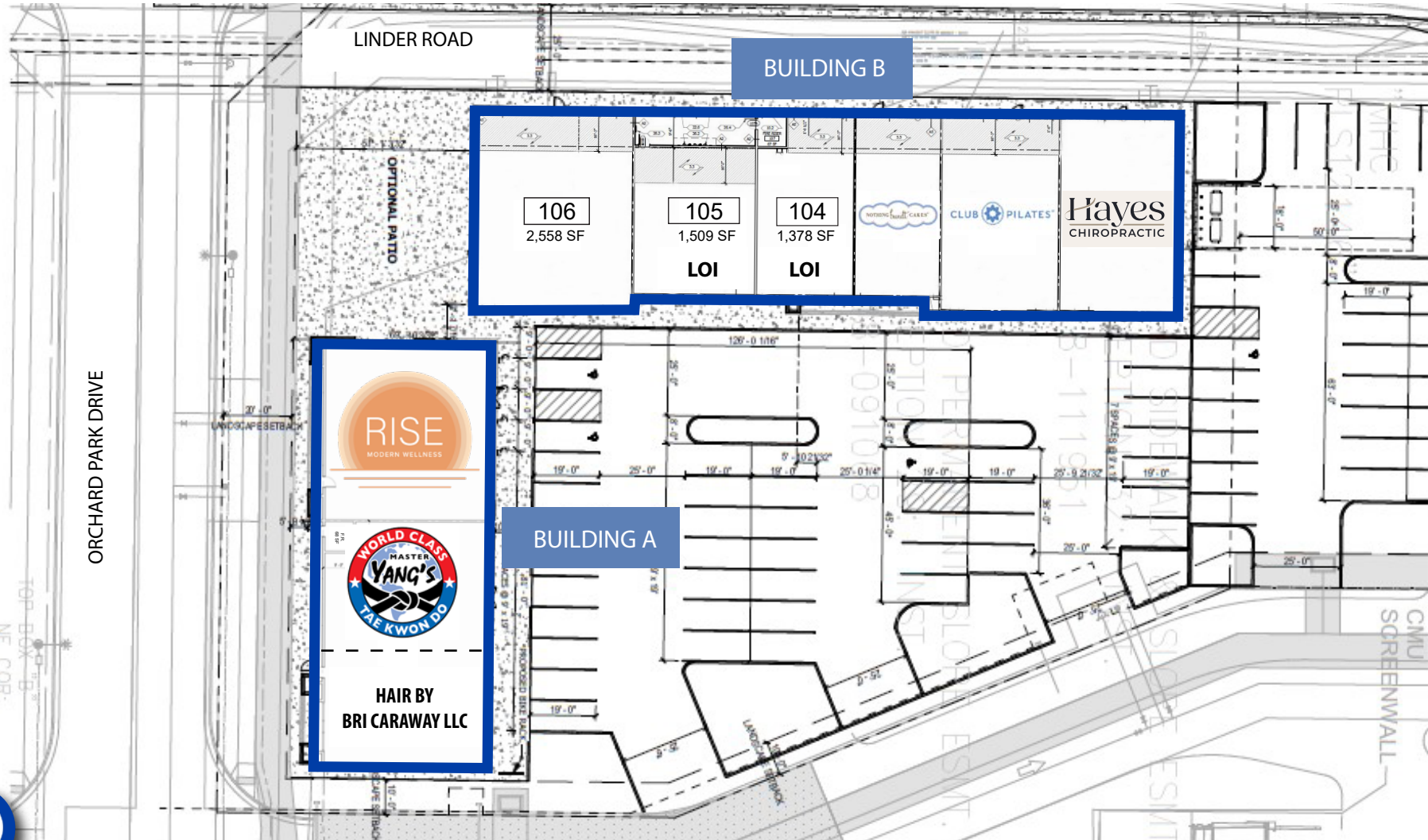


UPDATED: 11.19.2024

THIS PROPERTY IS EXCLUSIVELY MARKETED BY TOK BOISE LLC DBA TOK COMMERCIAL  
This information was obtained from sources believed reliable but cannot be guaranteed. Any opinions or estimates are used for example only.



**LAST REMAINING SUITES!**



UPDATED: 11.19.2024

THIS PROPERTY IS EXCLUSIVELY MARKETED BY TOK BOISE LLC DBA TOK COMMERCIAL  
This information was obtained from sources believed reliable but cannot be guaranteed. Any opinions or estimates are used for example only.









**Building A**

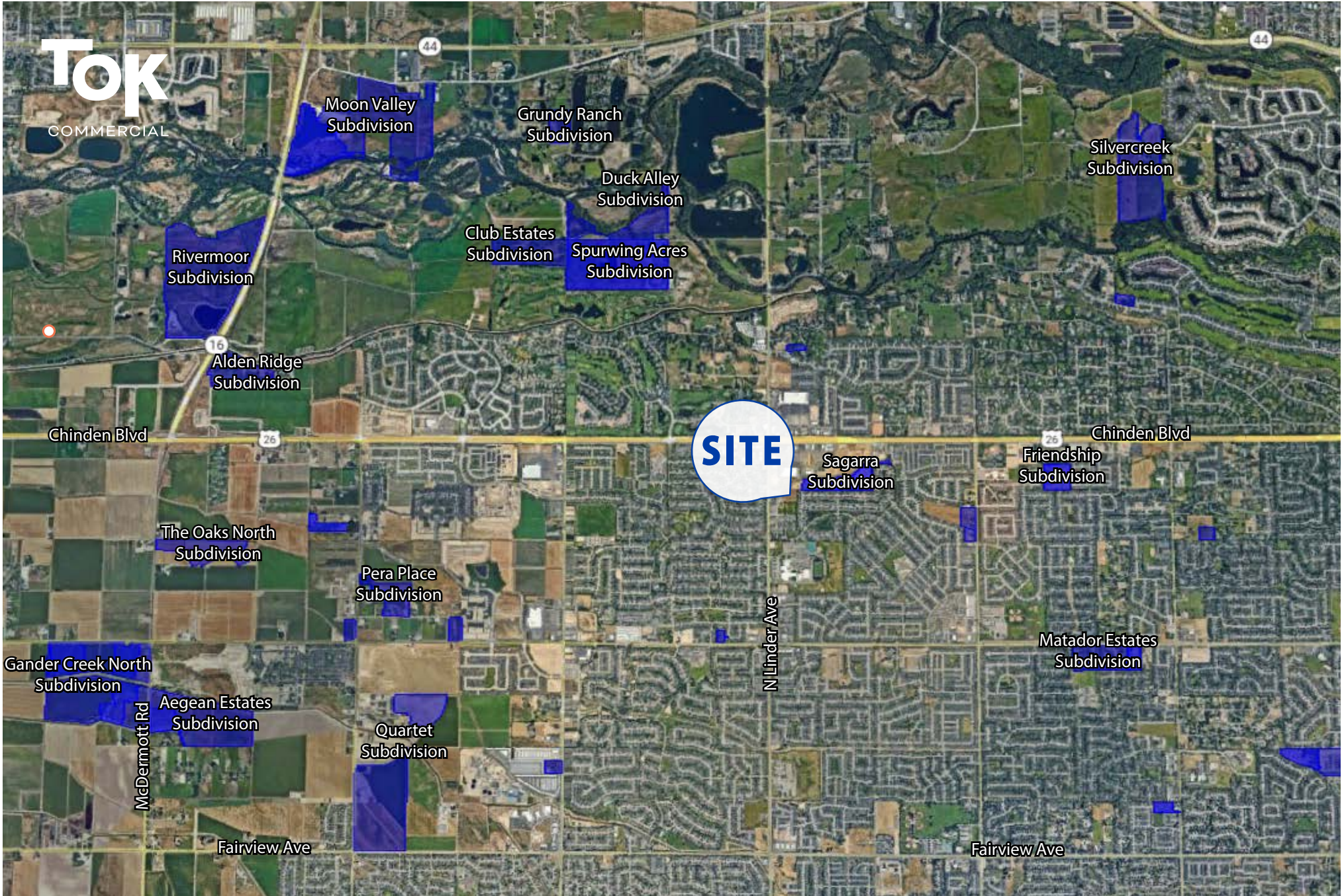
**Building B**



UPDATED: 11.19.2024

THIS PROPERTY IS EXCLUSIVELY MARKETED BY TOK BOISE LLC DBA TOK COMMERCIAL  
This information was obtained from sources believed reliable but cannot be guaranteed. Any opinions or estimates are used for example only.





**SITE**

IN THE CENTER OF NORTH MERIDIAN'S RAPID RESIDENTIAL GROWTH

UPDATED: 11.19.2024

THIS PROPERTY IS EXCLUSIVELY MARKETING BY TOK BOISE LLC DBA TOK COMMERCIAL  
This information was obtained from sources believed reliable but cannot be guaranteed. Any opinions or estimates are used for example only.





CHINDEN BLVD

THE COLLECTION

meridian  
library  
district

LINDER ROAD



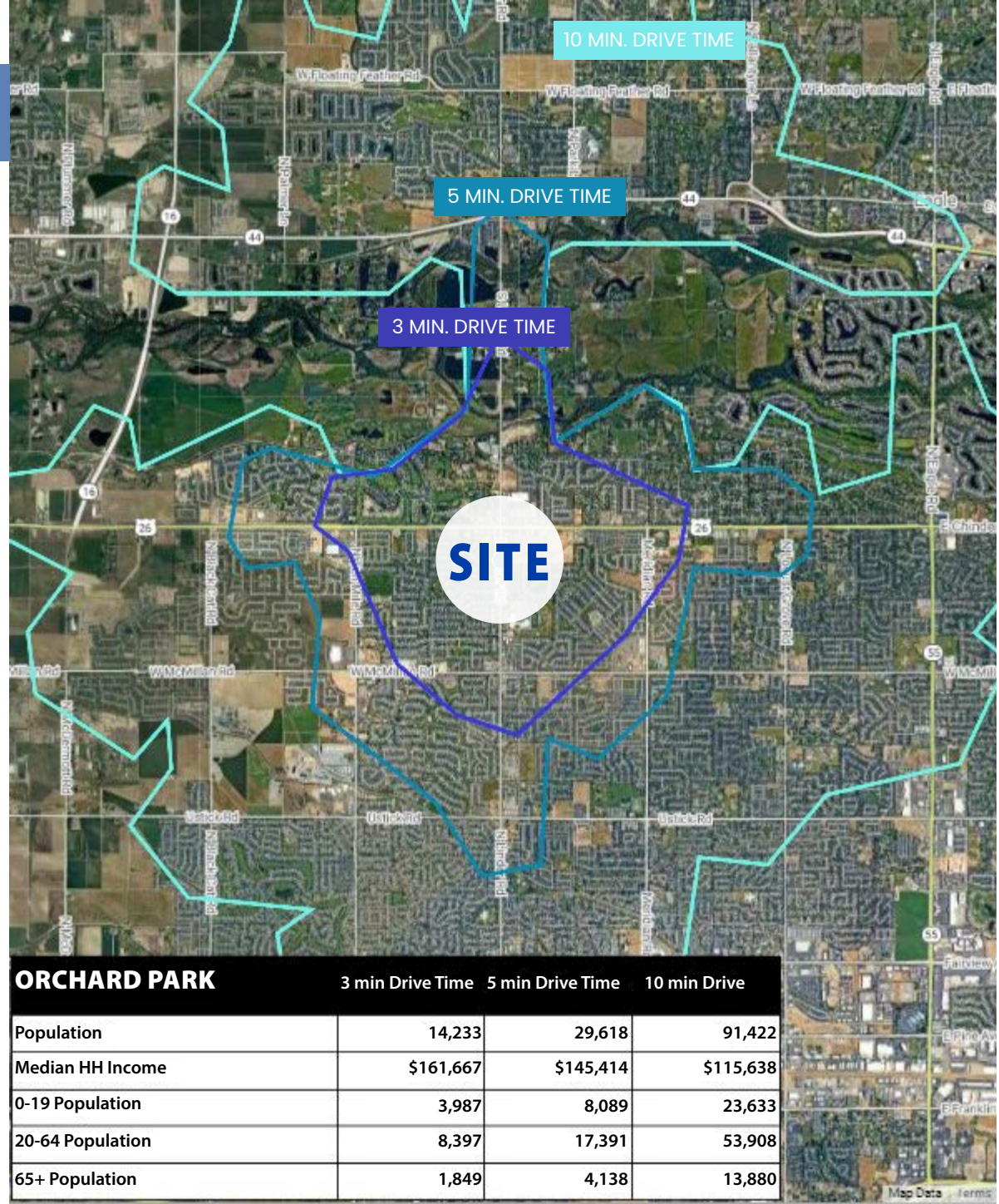


THE COLLECTION  
NEIGHBORING MIXED-USE DEVELOPMENT COMING 2025

UPDATED: 11.19.2024  
THIS PROPERTY IS EXCLUSIVELY MARKETED BY TOK BOISE LLC DBA TOK COMMERCIAL  
This information was obtained from sources believed reliable but cannot be guaranteed. Any opinions or estimates are used for example only.



# DEMOGRAPHICS & DRIVE TIMES



UPDATED: 11.19.2024

THIS PROPERTY IS EXCLUSIVELY MARKETED BY TOK BOISE LLC DBA TOK COMMERCIAL  
 This information was obtained from sources believed reliable but cannot be guaranteed. Any opinions or estimates are used for example only.



**EAGLE ISLAND MARKETPLACE**

**CHINDEN BLVD**

**46,326 VPD**

**SITE**

**ORCHARD PARK**

**LINDER ROAD**

**+3,332,432 STORE VISITS PER YEAR AT THE CHINDEN & LINDER INTERSECTION!**