

# 1331 Seventh St. Suite E

## FOR LEASE

HIGH-END OFFICE CONDO/ LIGHT INDUSTRIAL/ R&D  
**CENTRO 1331**

### PROPERTY HIGHLIGHTS

- Contemporary Design – Gold LEED Certified
- Open-plan first floor and mezzanine
- Glass roll-up door
- Polished concrete floor
- Private restroom and kitchenette
- Efficient radiant heating
- 2kw solar array
- High-speed broadband available
- Two private parking spaces
- Close to Whole Foods, Picante Mexican Restaurant, Fieldwork & Gilman Breweries, REI, North Face Outlet, & more
- Available 2/1/26

### SIZE

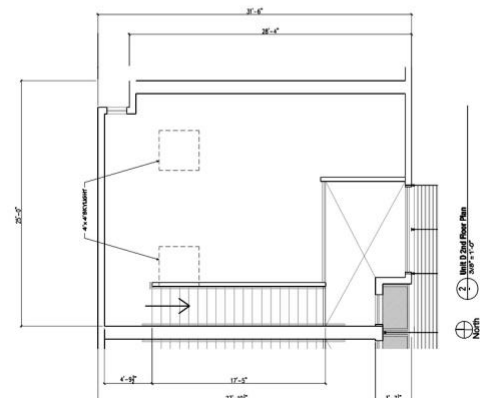
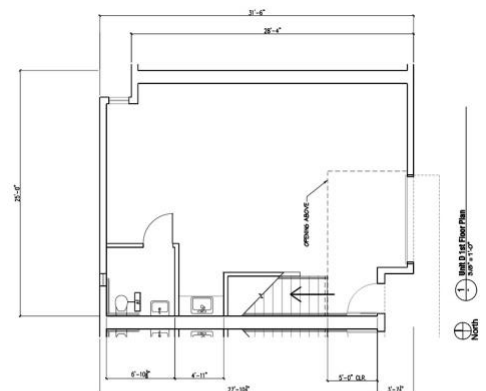
1,320 sq. ft.

### LEASE RATE

\$3.25

### LOCATION

1331 Seventh Street  
Between Gilman and Camelia



**NORHEIM  
& YOST**

732 Addison Street  
Suite "C"  
Berkeley, CA 94710

**John Norheim**

BRE # 00770171

jn@noryost.com

510-527-3400 x10

**Steve Smith**

BRE# 01330154

ss@noryost.com

510-527-3400 x12

All information furnished herein was provided by sources deemed reliable, but no representation is made or implied as to the accuracy thereof.