



THE BANKING HALL  
AT 108 LEONARD



THE BANKING HALL  
AT 108 LEONARD

## OVERVIEW

Contained within the elegant, landmarked condominium conversion 108 Leonard, The Banking Hall is an exceptional landmarked space located in the heart of New York City's trendy Tribeca neighborhood.

The multi-level Banking Hall offers an expansive floor plan suitable for a restaurant, club, event venue, or similar usage.

The opulent space is over 20,000 square feet, and features soaring ceiling heights, rare architectural details and is accessible by a separate, private entrance.



PRIVATE ENTRANCE ON LAFAYETTE

BH

BANKING HALL

108 LEONARD



THE BANKING HALL  
AT 108 LEONARD

## BUILDING FEATURES

Private Entrance on Lafayette  
Large, Open and Flexible Floor Plans  
Foyer/Waiting Area  
Multiple Levels  
Restoration to Original, Historical Elegance  
Marble Staircase  
2 Client Elevators and 1 Service Elevator  
Dedicated Kitchen  
Venting  
Capacity: 350  
All Uses Considered  
Possession To Be Agreed Upon  
Nearby Subway Lines: 1, 6, N, Q, R, W, J and Z

### GROUND

Approx. 1,068 SF  
12' to 29' Ceilings

### MAIN LEVEL

Approx. 10,339 SF  
14' to 29' Ceilings

### MEZZANINE

Approx. 7,417 SF\*  
9' to 14' Ceilings

### CELLAR

Approx. 1,267 SF  
15' Ceiling

\*Additional 2nd Floor space to create over 20,000 SF

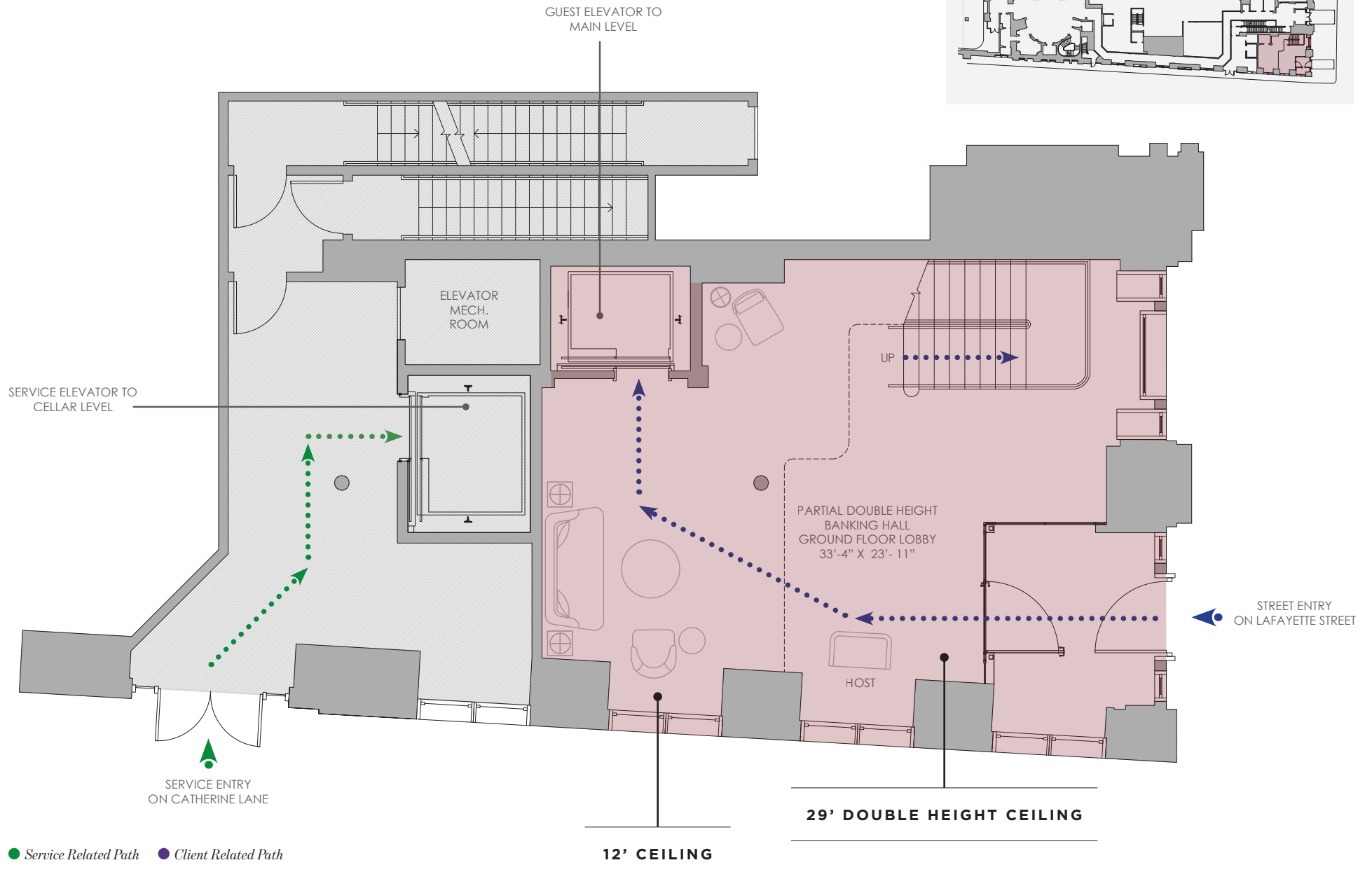






THE BANKING HALL  
AT 108 LEONARD

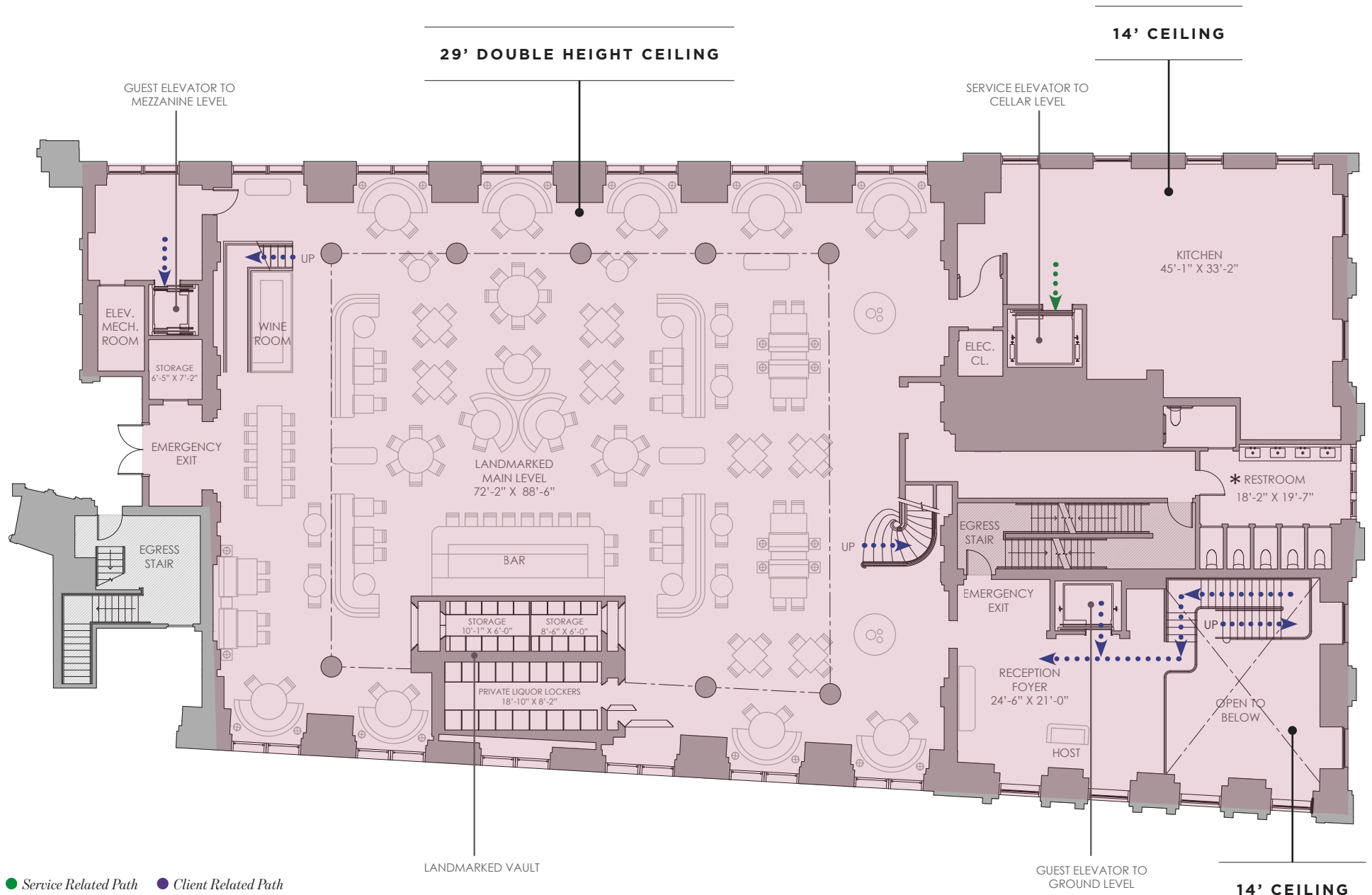
## GROUND LEVEL 1,068 Square Feet





# MAIN LEVEL 10,339 Square Feet

THE BANKING HALL  
AT 108 LEONARD



● Service Related Path ● Client Related Path

LANDMARKED VAULT

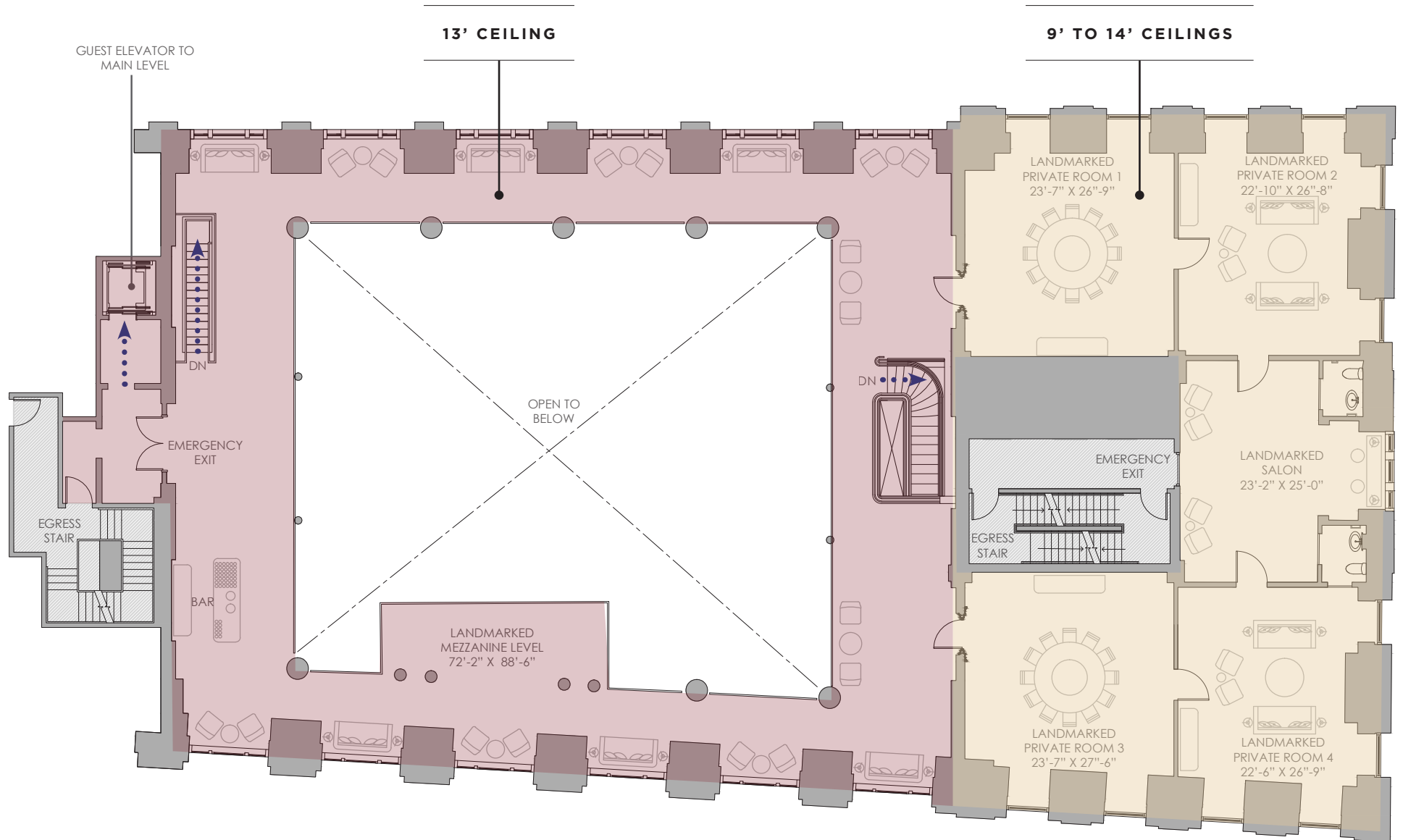
GUEST ELEVATOR TO  
GROUND LEVEL

14' CEILING



THE BANKING HALL  
AT 108 LEONARD

## MEZZANINE + OPTIONAL 2ND FLOOR 7,417 Square Feet



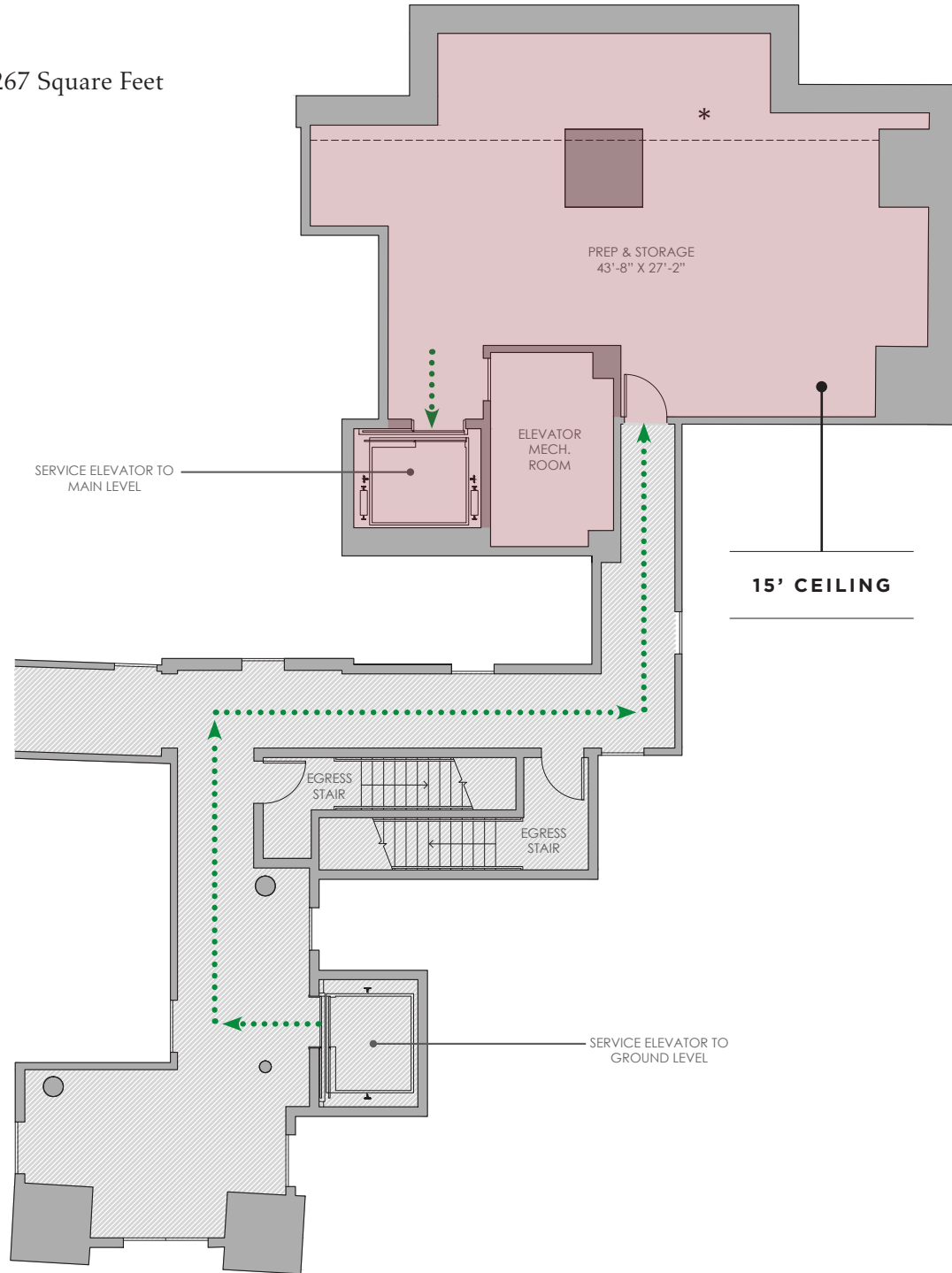
● Service Related Path ● Client Related Path





THE BANKING HALL  
AT 108 LEONARD

# CELLAR 1,267 Square Feet



● Service Related Path    ● Client Related Path



THE BANKING HALL  
AT 108 LEONARD

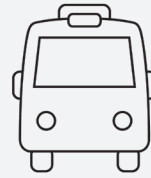
## THE NEIGHBORHOOD

Known for its cobblestone streets, trendy restaurants and boutiques, Tribeca is one of New York City's chicest neighborhoods.

This prime location not only affords the Banking Hall at 108 Leonard proximity to New York's top restaurants, hotels, social clubs and other hot spots, its also accessible by neighboring residential condominium in the area.

Notable nearby restaurants, retailers, and attractions include Locanda Verde, The Armoury, Equinox, Le Coucou, Augustine, Sarabeth's Tribeca, the New York Supreme Court, New York Law School, City Hall, the New York Public Library, the World Trade Center, and numerous transportation services.

*\*Statistics are within a 0.25 mile radius of 108 Leonard*



### EASILY ACCESSIBLE

<8 Minute Walk to 8 Subway Lines



### NEIGHBORHOOD WORKFORCE

~40,000 Employees



### RESIDENTIAL POPULATION

~13,000 Residents



### AVG HOUSEHOLD INCOME

\$109,227

39

### MEDIAN AGE

39 Years Old



### RESIDENTIAL UNITS

~5,000 Units



■ RETAIL   
 ■ OFFICE   
 ■ RESIDENTIAL   
 ■ POINTS OF INTEREST



**FOR MORE INFORMATION, PLEASE CONTACT**

**Peter Braus** Managing Principal | 212.776.1203 | [pbraus@lee-associates.com](mailto:pbraus@lee-associates.com)

**Brad Schwarz** Executive Managing Director & Principal | 212.776.1290 | [bschwarz@lee-associates.com](mailto:bschwarz@lee-associates.com)

**Cory Gahr** Managing Director | 212.776.1271 | [cgahr@lee-associates.com](mailto:cgahr@lee-associates.com)



Development managed by Elad Group. Sponsor: C3GB

All artist's or architectural renderings, sketches, graphic materials and photographs depicted or otherwise described herein are proposed and conceptual only, and are based upon preliminary development plans, which are subject to change.

Sponsor reserves the right to make changes, substitutions of material, equipment, fixtures, finishes and appliances.

Certain images provided by Jeffrey Beers International and their designs are the intellectual property of Jeffrey Beers International, all rights reserved. Copyright 2018. Further use of the images or their designs can only be obtained via written permission of Jeffrey Beers International, LLC.