

FOR LEASE

New Spec Suites

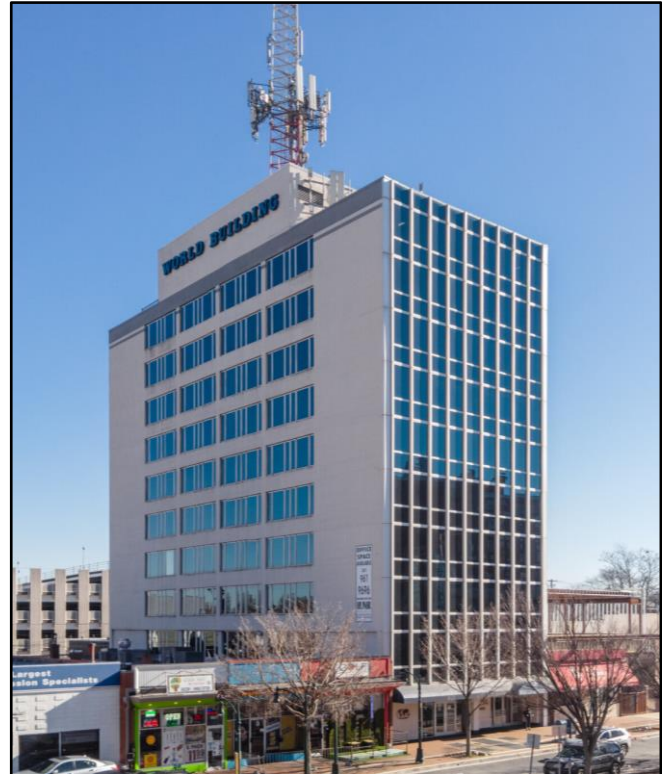
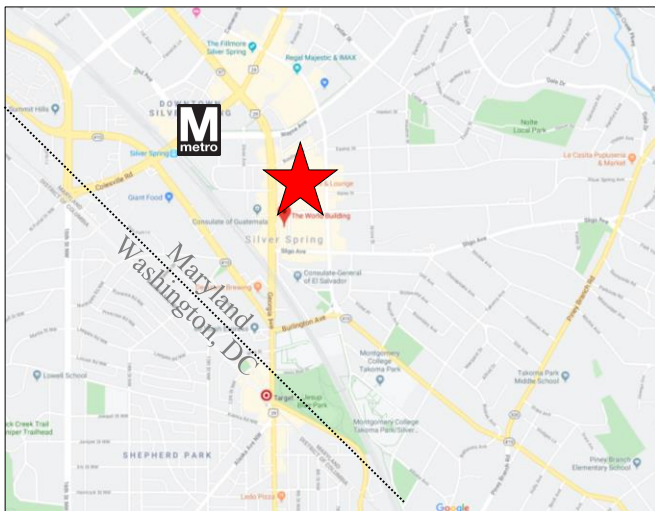
**The World Building
8121 Georgia Avenue
Silver Spring, Maryland**

OFFICE SPACE AVAILABLE

<u>Suite #</u>	<u>Rentable SF (RSF)</u>
202	386 RSF - <i>Furnished</i>
300	1,415 RSF - <i>Furnished</i>
500	2,140 RSF
900*	2,219 RSF

***New Spec Suite**

- Short walk to Silver Spring Metro
- Ample public parking in front and in rear garage
- Lobby Attendant
- Affordable business FIOS
- Day Care Center next door



**For more details or to arrange a tour,
please contact:**

Zach Dubin

zdubin@amrcommercial.com

William Montrose

wmontrose@amrcommercial.com

301-961-9696

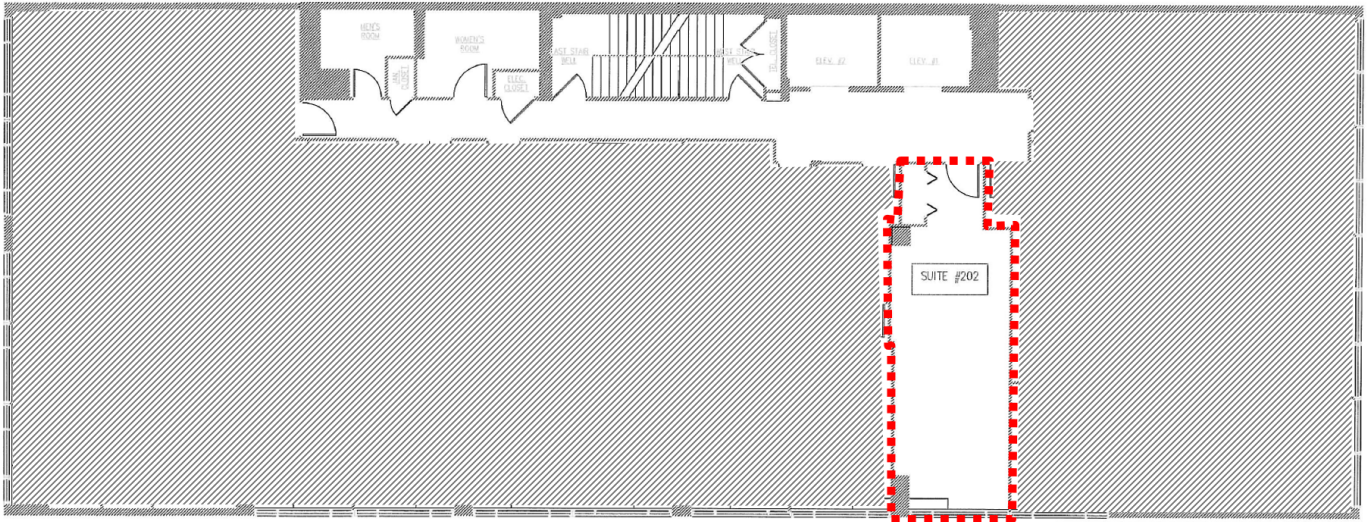


A Member of **CORE** NETWORK

Although all information furnished is from sources we deem reliable, such information has not been verified and no express representation is made nor is any to be implied as to the accuracy thereof, and it is submitted subject to errors, omissions, or other conditions.

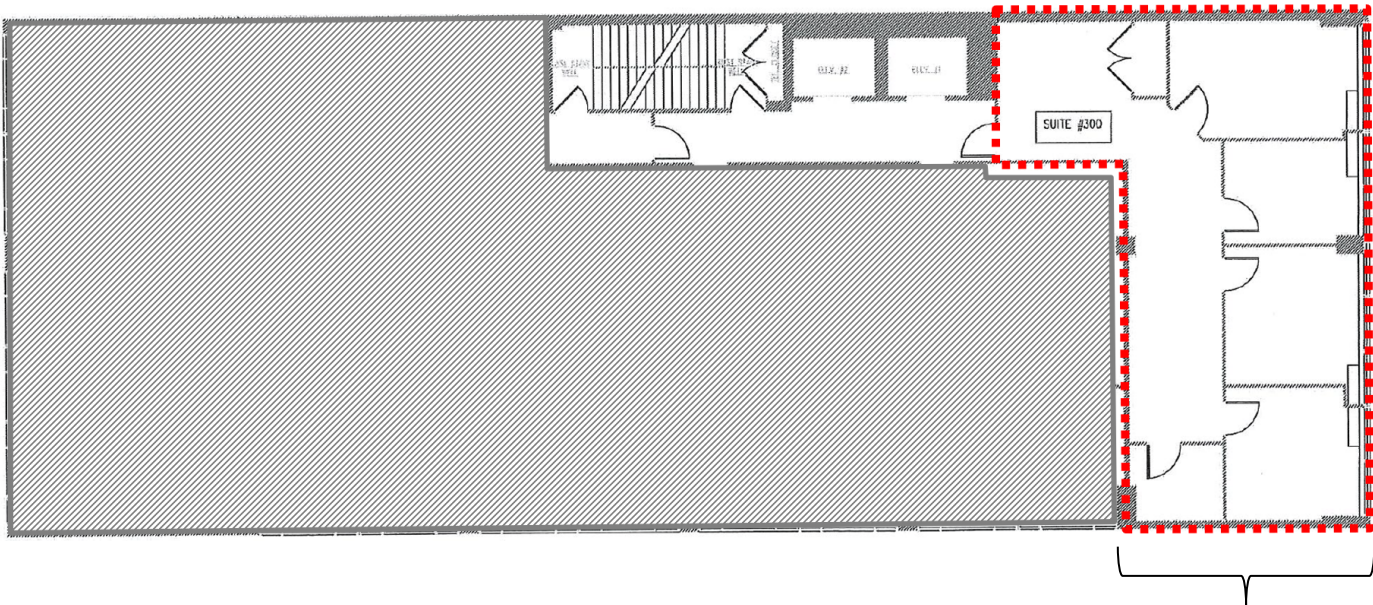
4849 Rugby Avenue ♦ Suite 200 ♦ Bethesda, Maryland 20814 ♦ 301.961.9696 ♦ Fax 301.656.7551 ♦ www.amrcommercial.com

2nd Floor
386 RSF



Suite 202
386 RSF
Furnished

3rd Floor
1,415 RSF

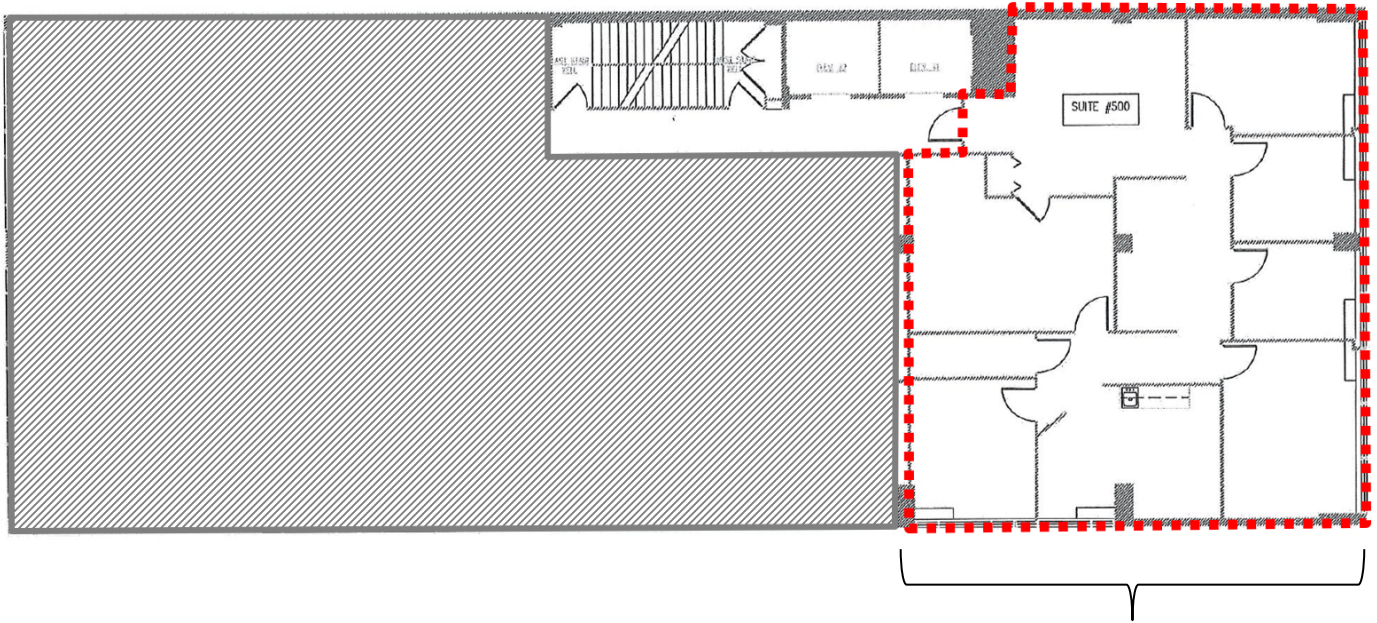


Suite 300
1,415 RSF
Furnished

NOT TO SCALE | MEASUREMENTS APPROXIMATE

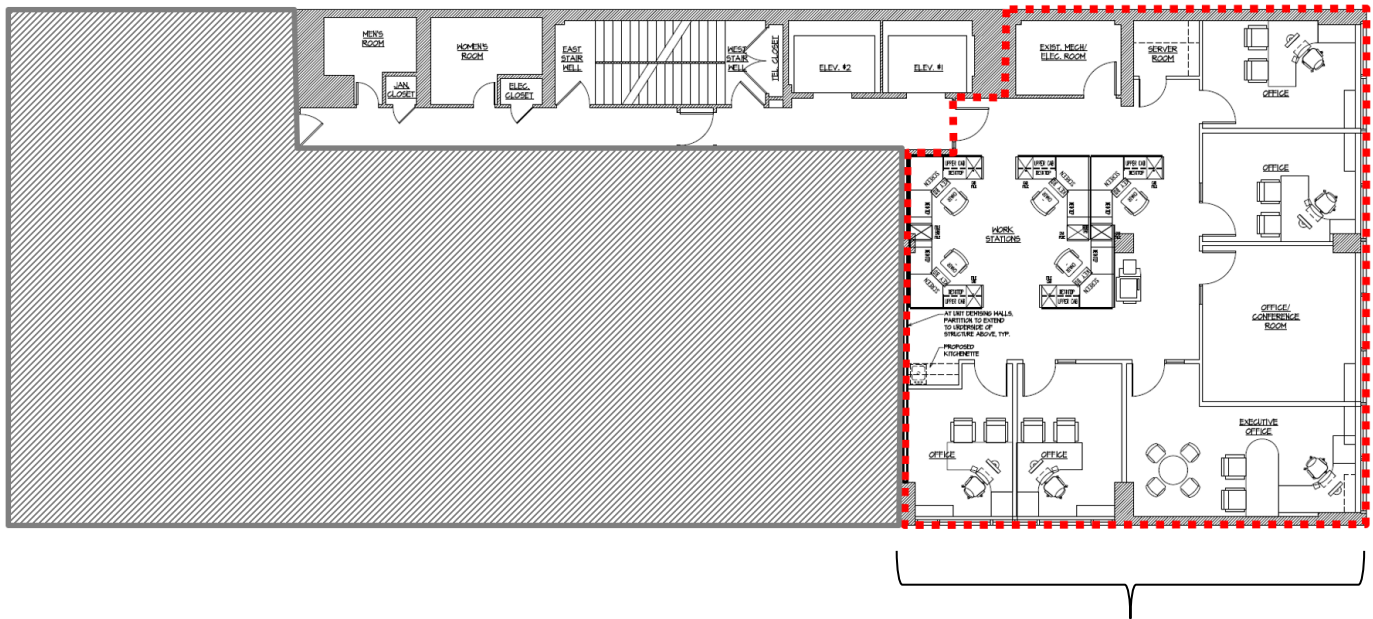
Although all information furnished is from sources we deem reliable, such information has not been verified and no express representation is made, nor is any to be implied, as to the accuracy thereof, and it is submitted subject to errors, omissions, changes of price/rental or other conditions prior to sale or lease, and subject to withdrawal without notice.

5th Floor
2,140 RSF



Suite 500
2,140 RSF

9th Floor
2,219 RSF



Suite 900
2,219 RSF

NOT TO SCALE | MEASUREMENTS APPROXIMATE

Although all information furnished is from sources we deem reliable, such information has not been verified and no express representation is made, nor is any to be implied, as to the accuracy thereof, and it is submitted subject to errors, omissions, changes of price/rental or other conditions prior to sale or lease, and subject to withdrawal without notice.