



# PRIME MEDICAL OFFICE ON DOCTOR'S ROW IN METAIRIE

3939 Houma Boulevard Bldg 3 Suite 13, Metairie, LA 70006

MATT EATON, CCIM • PARTNER  
OFFICE: 504.414.0703  
MOBILE: 504.339.2136  
matt@matteatonccim.com

MARTIN O. MILLER III, CCIM, SIOR • PARTNER  
OFFICE: 504.414.0703  
MOBILE: 504.616.5700  
momiller@ccim.net



## PROPERTY DESCRIPTION

Southeast Commercial is pleased to present a prime medical office suite located on Doctor's Row in Metairie, LA—just steps from East Jefferson General Hospital and surrounded by numerous medical offices.

The first floor offers approximately 1,080 square feet of clinic space, featuring two bathrooms, a kitchenette, a break room, multiple office spaces, and a conference room. The second floor is 696 square feet and includes a spacious office area with generous storage, ideal for administrative use or additional workstations.

This location is perfect for medical professionals seeking a well-positioned and functional workspace in the heart of Metairie's medical corridor.



## OFFERING SUMMARY

Sale Price:	\$355,200
Building Size:	1,776 SF

DEMOGRAPHICS	1 MILE	3 MILES	5 MILES
Total Households	7,343	51,611	101,167
Total Population	17,813	118,301	232,703
Average HH Income	\$99,544	\$100,471	\$98,249

## OFFICE BUILDING FOR SALE

### PROPERTY SUMMARY







# PRIME MEDICAL OFFICE ON DOCTOR'S ROW IN METAIRIE

3939 Houma Boulevard Bldg 3 Suite 13, Metairie, LA 70006

MATT EATON, CCIM • PARTNER

OFFICE: 504.414.0703

MOBILE: 504.339.2136

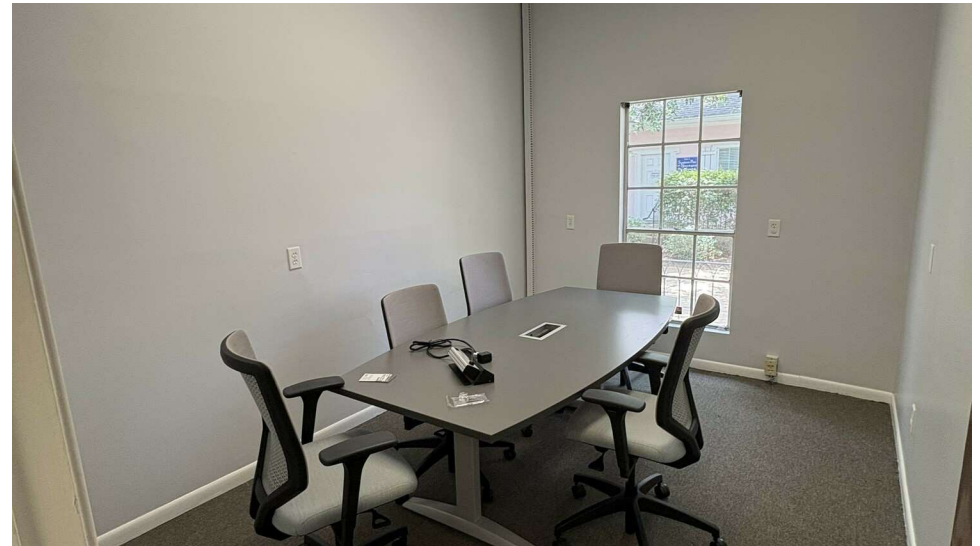
matt@matteatonccim.com

MARTIN O. MILLER III, CCIM, SIOR • PARTNER

OFFICE: 504.414.0703

MOBILE: 504.616.5700

momiller@ccim.net



OFFICE BUILDING FOR SALE

ADDITIONAL PHOTOS

SOUTHEAST COMMERCIAL REAL ESTATE | 2310 19th Street Gulfport, MS 39501 | <https://southeastcre.com>



SOUTHEAST  
COMMERCIAL  
REAL ESTATE





# PRIME MEDICAL OFFICE ON DOCTOR'S ROW IN METAIRIE

3939 Houma Boulevard Bldg 3 Suite 13, Metairie, LA 70006

MATT EATON, CCIM • PARTNER

OFFICE: 504.414.0703

MOBILE: 504.339.2136

matt@matteatonccim.com

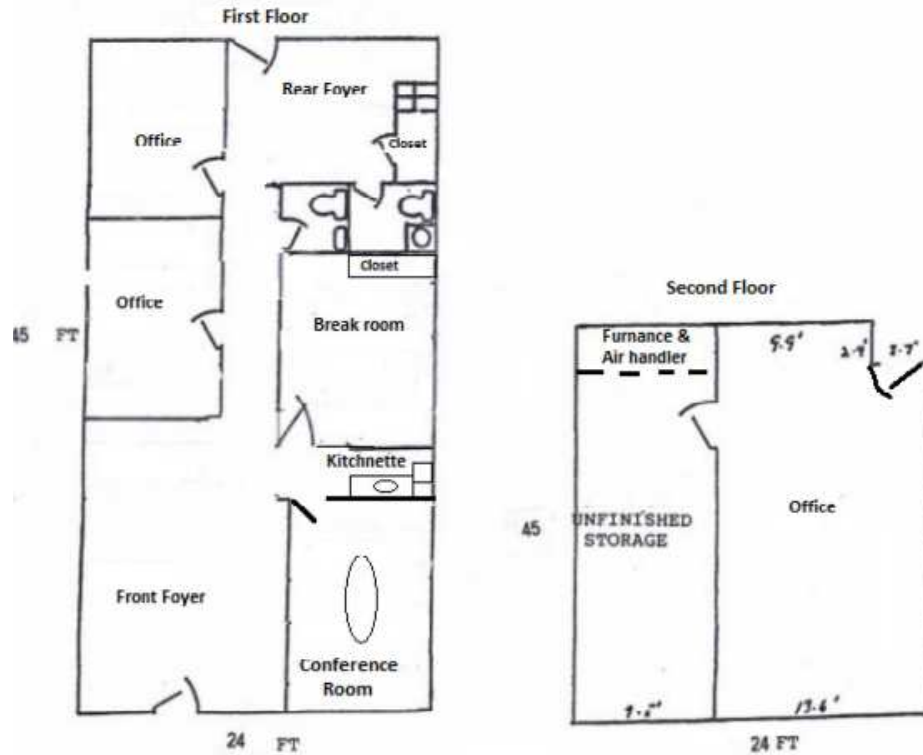
MARTIN O. MILLER III, CCIM, SIOR • PARTNER

OFFICE: 504.414.0703

MOBILE: 504.616.5700

momiller@ccim.net

## 3939 HOUMA BLVD. DOCTORS ROW CONDOMINIUM UNIT 3B/SUITE 13 METAIRIE, LA 70002



1,080 SQ.FT. – First Floor  
696 SQ.FT. – Second Floor includes storage area



OFFICE BUILDING FOR SALE

FLOOR PLAN







# PRIME MEDICAL OFFICE ON DOCTOR'S ROW IN METAIRIE

3939 Houma Boulevard Bldg 3 Suite 13, Metairie, LA 70006

MATT EATON, CCIM • PARTNER

OFFICE: 504.414.0703

MOBILE: 504.339.2136

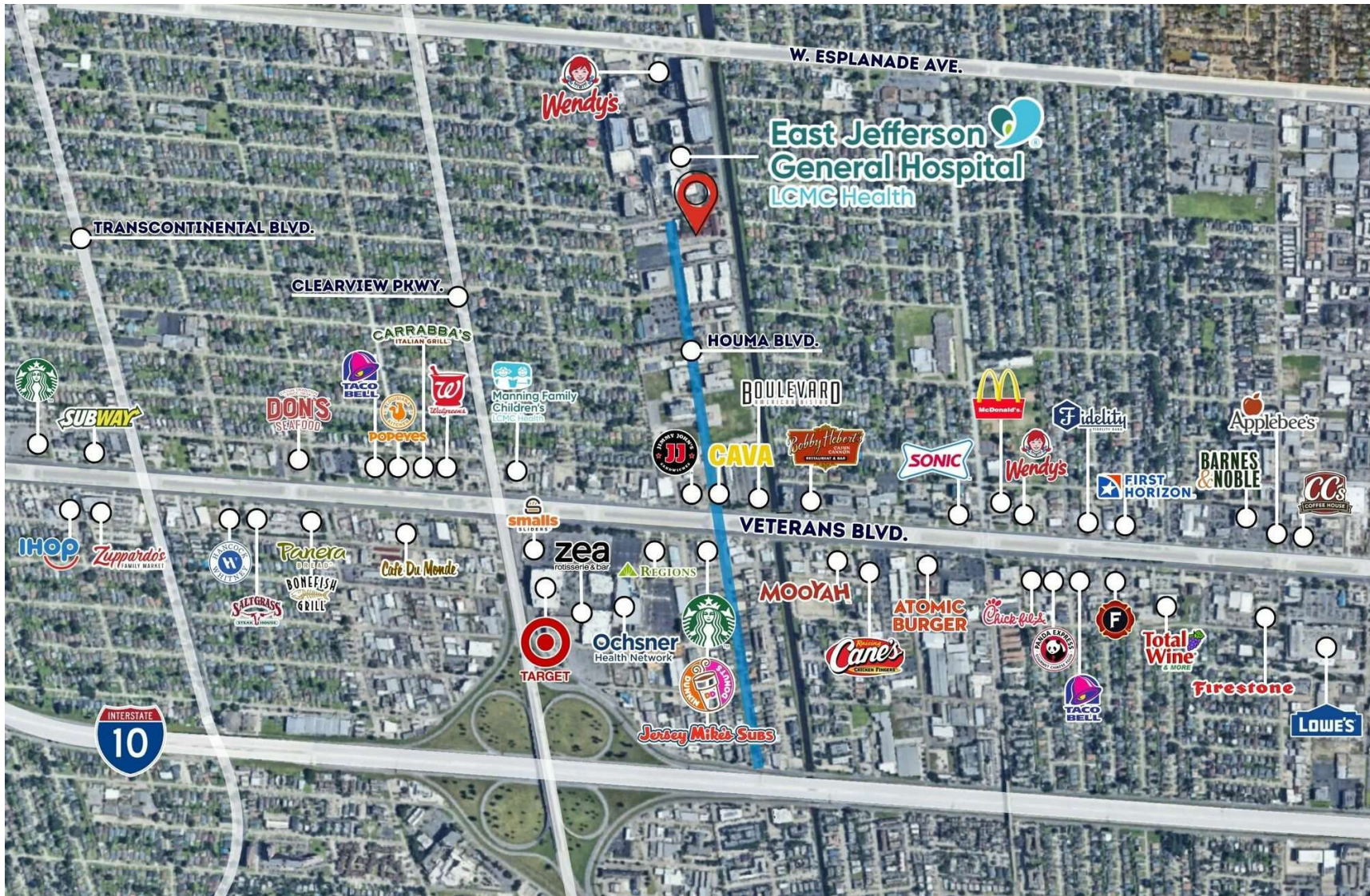
matt@matteatonccim.com

MARTIN O. MILLER III, CCIM, SIOR • PARTNER

OFFICE: 504.414.0703

MOBILE: 504.616.5700

momiller@ccim.net



OFFICE BUILDING FOR SALE

AERIAL

SOUTHEAST COMMERCIAL REAL ESTATE | 2310 19th Street Gulfport, MS 39501 | <https://southeastcre.com>



SOUTHEAST  
COMMERCIAL  
REAL ESTATE





# PRIME MEDICAL OFFICE ON DOCTOR'S ROW IN METAIRIE

3939 Houma Boulevard Bldg 3 Suite 13, Metairie, LA 70006

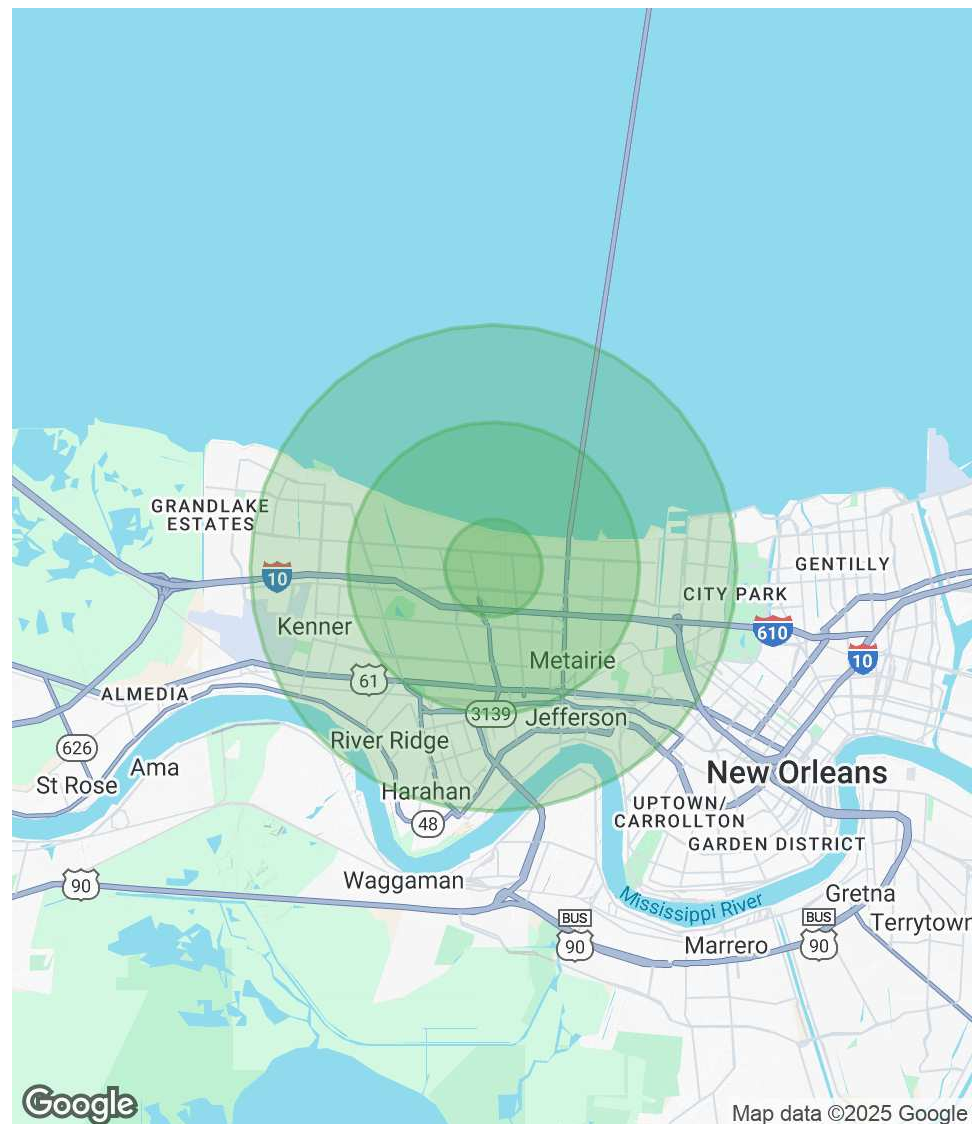
MATT EATON, CCIM • PARTNER  
OFFICE: 504.414.0703  
MOBILE: 504.339.2136  
matt@matteatonccim.com

MARTIN O. MILLER III, CCIM, SIOR • PARTNER  
OFFICE: 504.414.0703  
MOBILE: 504.616.5700  
momiller@ccim.net

POPULATION	1 MILE	3 MILES	5 MILES
Total Population	17,813	118,301	232,703
Average Age	41	42	42
Average Age (Male)	40	41	41
Average Age (Female)	43	44	43

HOUSEHOLDS & INCOME	1 MILE	3 MILES	5 MILES
Total Households	7,343	51,611	101,167
# of Persons per HH	2.4	2.3	2.3
Average HH Income	\$99,544	\$100,471	\$98,249
Average House Value	\$368,072	\$343,844	\$354,359

Demographics data derived from AlphaMap



OFFICE BUILDING FOR SALE

DEMOGRAPHICS MAP & REPORT



SOUTHEAST  
COMMERCIAL  
REAL ESTATE